



King's Research Portal

DOI:

[10.1097/TXD.0000000000000778](https://doi.org/10.1097/TXD.0000000000000778)

Document Version

Publisher's PDF, also known as Version of record

[Link to publication record in King's Research Portal](#)

Citation for published version (APA):

Rackham, C. L., Dhadda, P. K., Simpson, S. J. S., Godazgar, M., King, A. J. F., & Jones, P. M. (2018). Composite Mesenchymal Stromal Cell Islets: Implications for transplantation via the clinically-preferred Intraportal route. *Transplantation Direct*, 4(4), e354. <https://doi.org/10.1097/TXD.0000000000000778>

Citing this paper

Please note that where the full-text provided on King's Research Portal is the Author Accepted Manuscript or Post-Print version this may differ from the final Published version. If citing, it is advised that you check and use the publisher's definitive version for pagination, volume/issue, and date of publication details. And where the final published version is provided on the Research Portal, if citing you are again advised to check the publisher's website for any subsequent corrections.

General rights

Copyright and moral rights for the publications made accessible in the Research Portal are retained by the authors and/or other copyright owners and it is a condition of accessing publications that users recognize and abide by the legal requirements associated with these rights.

- Users may download and print one copy of any publication from the Research Portal for the purpose of private study or research.
- You may not further distribute the material or use it for any profit-making activity or commercial gain
- You may freely distribute the URL identifying the publication in the Research Portal

Take down policy

If you believe that this document breaches copyright please contact librarypure@kcl.ac.uk providing details, and we will remove access to the work immediately and investigate your claim.

OPEN

Composite Mesenchymal Stromal Cell Islets: Implications for Transplantation via the Clinically Preferred Intraportal Route

Chloe L. Rackham, PhD,¹ Paramjeet K. Dhadda, PhD,¹ Sian J.S. Simpson, BSc,¹ Mahdiah Godazgar, BSc,¹ Aileen J.F. King, PhD,¹ and Peter M. Jones, PhD¹

Cotransplantation of islets with mesenchymal stromal cells (MSCs) has been shown to improve islet transplantation outcome. Improved glycemia in graft recipients have been attributed to superior islet revascularization, maintenance of islet organization and morphology, and a multitude of immunomodulatory mechanisms. These effects are mediated by a vast array of soluble trophic MSC-derived factors and extracellular matrix production, and/or direct cell-cell contact mechanisms. Most of these studies have used experimental transplantation sites, such as the kidney, to facilitate the colocalization of large numbers of MSCs with the islet graft. However, there are notable disparities with the clinically preferred intraportal route which have implications for colocalization of the islets and MSCs. Thus, because of the differences in their size, islets lodge in small vessels of the hepatic microcirculation, whereas the smaller MSCs will

most likely engraft in other sites, such as the microvasculature of the lungs.¹

An alternative method to ensure colocalization of the MSCs with islets posttransplantation is to form composite MSC islets in vitro,^{2,3} before transplantation. This approach has demonstrated beneficial effects on islet revascularization and reductions in graft lymphocyte infiltration.³ We aimed to determine whether composite MSC islets transplanted to the clinically preferred intraportal site improve glycemia in diabetic mice. Composite MSC islets were formed by suspension coculture and visualized using a Nikon Biostation. Islet insulin secretory function in vitro was assessed by static secretion assays.^{4,5} Intraportal syngeneic islet transplantations (C57Bl/6 mice) were used⁴ to assess the in vivo function of MSC islet composites.

Mesenchymal stromal cells adhered to the surface of islets in a random manner and appeared to penetrate the islet structure within 8 hours (75 islets: 200 000 MSCs [Figures 1A and B]). There was limited interaction of MSCs with islets at lower MSC doses (20 000). We demonstrated an MSC dose-dependent potentiation of glucose-stimulated insulin secretion when islets were precultured with MSCs in suspension coculture to form composites (Figure 1C). The majority of MSCs at both doses remained in suspension and did not adhere to cocultured islets, so transplanting MSC islet composites greatly reduced the dose of MSCs delivered in the graft when compared with cotransplanting islets and MSCs at the renal subcapsular site. Average blood glucose concentrations were comparable between transplant groups for the first 3 weeks posttransplantation and were lower at 4 weeks posttransplantation in recipients of MSC islet composites (Figure 1D).

Our current findings demonstrate that the dose of MSCs that can be codelivered and colocalized at the site of individual islet engraftment by forming MSC islet composites is too low to promote early and robust improvements in graft function at the clinically preferred intraportal site. Lack of efficacy due to the low MSC dose will be further exacerbated by the loss of up to 90% of MSCs posttransplantation.³ These findings are of significant clinical importance because they highlight the need to interpret some of the promising experimental studies using extrahepatic sites with caution, in terms of translation to clinical practice. We propose that MSC cotransplantation strategies present superior translational benefit at alternative sites, such as the intramuscular site, where codelivery of therapeutically efficacious MSC

Received 15 January 2018. Revision requested 22 January 2018.

Accepted 26 January 2018.

¹ Department of Diabetes, School of Life Course Sciences, King's College London, London, United Kingdom.

The authors are grateful to Diabetes UK for funding this study (06/0003387 and 11/0004290 to A.J.F.K. and P.M.J.).

The authors declare no conflicts of interest.

C.L.R. participated in research design, writing of the letter, performance of the research and data analysis. P.K.D. participated in research design, performance of the research and data analysis. S.J.S. participated in research design, performance of the research, and data analysis. M.G. participated in research design, performance of the research, and data analysis. A.J.F.K. participated in research design, writing of the letter and performance of the research. P.M.J. participated in research design and writing of the letter.

Correspondence: Chloe L. Rackham, PhD, Department of Diabetes, School of Life Course Sciences, Faculty of Life Sciences and Medicine, King's College London, London SE1 1UL, United Kingdom. (chloe.rackham@kcl.ac.uk); Peter M. Jones, PhD, Department of Diabetes, School of Life Course Sciences, Faculty of Life Sciences and Medicine, King's College London, London SE1 1UL, United Kingdom. (peter.jones@kcl.ac.uk).

Copyright © 2018 The Author(s). Transplantation Direct. Published by Wolters Kluwer Health, Inc. This is an open-access article distributed under the terms of the Creative Commons Attribution-Non Commercial-No Derivatives License 4.0 (CCBY-NC-ND), where it is permissible to download and share the work provided it is properly cited. The work cannot be changed in any way or used commercially without permission from the journal.

ISSN: 2373-8731

Transplantation Direct 2018;4: e354; doi: 10.1097/TXD.0000000000000778.

Published online 19 March, 2018.

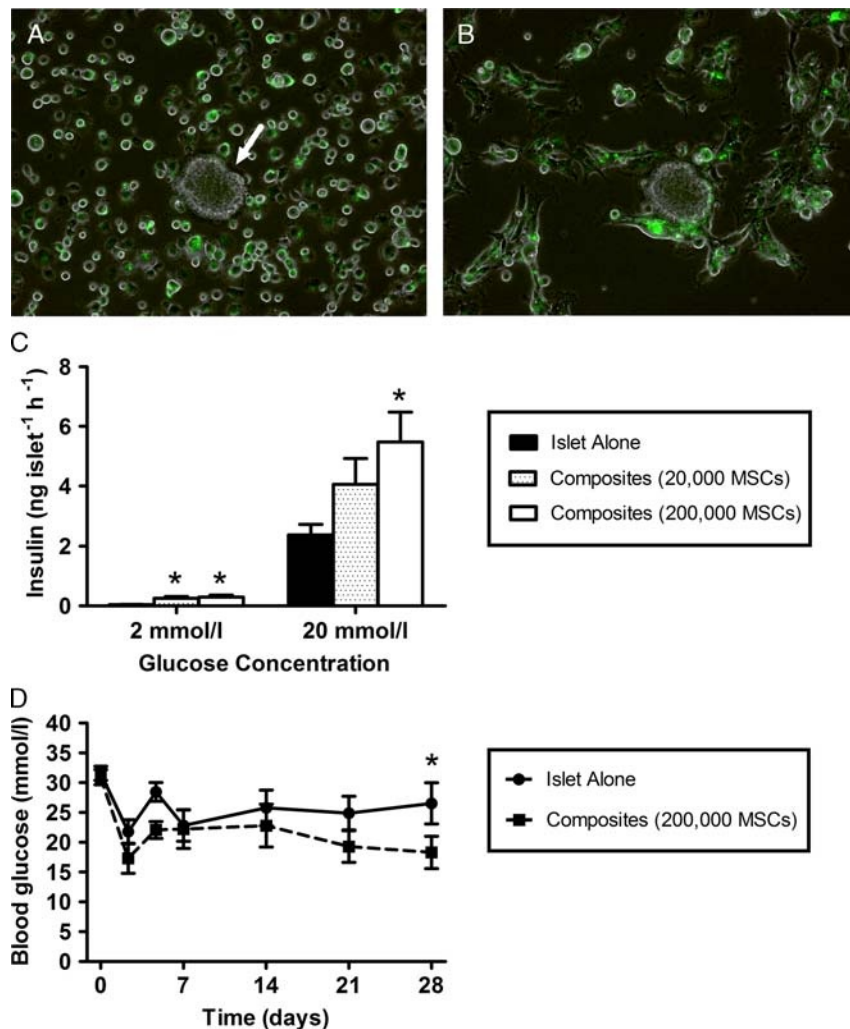


FIGURE 1. Seventy-five mouse islets were precultured with 200 000 fluorescently labeled (Qtracker 525 cell labeling kit; Invitrogen) mouse MSCs (green), per 35-mm dish, in suspension coculture for 24 hours to form composite MSC-islets. A single islet (white arrow) surrounded by MSCs (green) at the beginning of the coculture period (A). MSCs adhere to the edge of the islet after 2 hours of culture (B) and MSCs penetrate the islet core after 8 hours, leading to the formation of MSC-islet composites. Scale bar 100 μ m. C, Insulin release at 2 and 20 mmol/L glucose of 10 replicates of 3 islets per Eppendorf tube, precultured alone (black bar) for 24 hours, or in suspension coculture with 20 000 (dotted bar), or 200 000 MSCs (white bar), to form MSC-islet composites, * $P < 0.01$ versus islets precultured alone at the same glucose concentration. D, Average blood glucose concentrations of mice receiving intraportal transplantations of 200 islets precultured with MSCs (at a ratio of 75 islets: 200 000 MSCs per 35-mm dish) in suspension coculture for 24 hours to form composites (dashed line) or islets precultured alone for 24 hours (solid line), * $P < 0.05$ vs. mice transplanted with MSC islet composites (repeated-measures ANOVA with Bonferroni post hoc test, $n = 6$ for both transplant groups). ANOVA, analysis of variance.

doses can more likely be achieved. However, the issue of limited MSC survival and functional persistence *in vivo* remains a significant issue at these sites. Emerging evidence indicates tremendous potential in harnessing the MSC secretome as a “cell-free” regenerative strategy in numerous disease settings, including diabetes.⁵ The use of defined MSC biotherapeutics has obvious translational advantage, negating many safety and regulatory concerns of incorporating MSCs into clinical transplantation protocols. Because it is not possible to deliver high numbers of MSCs directly with the islets intraportally, alternative MSC-based strategies using defined dosing schedules of MSC-derived trophic factors⁵ may provide a preferable approach to improve the outcomes of intraportal islet transplantation.

REFERENCES

1. Eggenhofer E, Benseler V, Kroemer A, et al. Mesenchymal stem cells are short-lived and do not migrate beyond the lungs after intravenous infusion. *Front Immunol.* 2012;3:297.
2. Duprez IR, Johansson U, Nilsson B, et al. Preparatory studies of composite mesenchymal stem cell islets for application in intraportal islet transplantation. *Ups J Med Sci.* 2011;116:8–17.
3. Fransson M, Brannstrom J, Duprez I, et al. Mesenchymal stromal cells support endothelial cell interactions in an intramuscular islet transplantation model. *Regen Med Res.* 2015;3:1.
4. Rackham CL, Dhadda PK, Le Lay AM, et al. Preculturing islets with adipose-derived mesenchymal stromal cells is an effective strategy for improving transplantation efficiency at the clinically preferred intraportal site. *Cell Med.* 2014;7:37–47.
5. Rackham CL, Vargas AE, Hawkes RG, et al. Annexin A1 is a key modulator of mesenchymal stromal cell-mediated improvements in islet function. *Diabetes.* 2016;65:129–139.