



King's Research Portal

DOI:

[10.3390/ecsa-5-05742](https://doi.org/10.3390/ecsa-5-05742)

Document Version

Peer reviewed version

[Link to publication record in King's Research Portal](#)

Citation for published version (APA):

Pontoriero, A., Charlton, P. H., & Alastruey-Armon, J. (2019). Alzheimer's disease: a step towards prognosis using smart wearables. In *Proceedings Multidisciplinary Digital Publishing Institute (MDPI)*.
<https://doi.org/10.3390/ecsa-5-05742>

Citing this paper

Please note that where the full-text provided on King's Research Portal is the Author Accepted Manuscript or Post-Print version this may differ from the final Published version. If citing, it is advised that you check and use the publisher's definitive version for pagination, volume/issue, and date of publication details. And where the final published version is provided on the Research Portal, if citing you are again advised to check the publisher's website for any subsequent corrections.

General rights

Copyright and moral rights for the publications made accessible in the Research Portal are retained by the authors and/or other copyright owners and it is a condition of accessing publications that users recognize and abide by the legal requirements associated with these rights.

- Users may download and print one copy of any publication from the Research Portal for the purpose of private study or research.
- You may not further distribute the material or use it for any profit-making activity or commercial gain
- You may freely distribute the URL identifying the publication in the Research Portal

Take down policy

If you believe that this document breaches copyright please contact librarypure@kcl.ac.uk providing details, and we will remove access to the work immediately and investigate your claim.

Alzheimer's disease: a step towards prognosis using smart wearables

Antonella D. Pontoriero ^{1,‡}, Peter H. Charlton ^{1,*},[‡] and Jordi Alastruey ¹

¹ Department of Biomedical Engineering, School of Biomedical Engineering and Imaging Sciences, King's College London, King's Health Partners, St Thomas' Hospital, London, SE1 7EH, United Kingdom

* Correspondence: peter.charlton@kcl.ac.uk

‡ These authors contributed equally to this work

† Presented at the 5th International Electronic Conference on Sensors and Applications, 15–30 November 2018; Available online: <http://sciforum.net/conference/ecsa-5>.

Published: date

Abstract: Alzheimer's disease (AD) is the most common cause of dementia. Several haemodynamic risk factors for AD have been identified, including ageing, increased arterial stiffness, high systolic blood pressure (BP) and brain hypoperfusion. We propose a novel approach for assessing haemodynamic risk factors by analysing arterial pulse waves (PWs). The aim of this feasibility study was to determine whether features extracted from PWs measured by wearable sensors might have utility for stratifying patients at risk of AD. A numerical model of PW propagation was used to simulate PWs for virtual subjects of each age decade from 25 to 75 years (16 subjects in total), with subjects at each age exhibiting normal variation in arterial stiffness. Several PW features were extracted, and their relationships with AD risk factors were investigated. PWs at the wrist were found to exhibit changes with age and arterial stiffness, indicating that it may be possible to identify changes in risk factors from smart wearables. Several candidate PW features were identified which changed significantly with age for future testing. This study demonstrates the potential feasibility of assessing haemodynamic risk factors for AD from non-invasive PWs. These factors could be assessed from the PPG PW, which can be acquired by smart watches and phones. If the findings are replicated in clinical studies, then this may provide opportunity for patients to assess their own risk and make lifestyle changes accordingly.

Keywords: Alzheimer's, pulse wave, blood pressure, photoplethysmogram, hypoperfusion

1. Introduction

Alzheimer's disease (AD) is the most common cause of dementia, impacting patient wellbeing and healthcare costs. It is a progressive neurodegenerative brain disorder that disrupts normal brain structure and function, for which no cure is available. Its symptoms include memory loss, cognitive decline, and a reduced ability to perform everyday tasks [1]. It is estimated that over 47 million people worldwide have AD, most of whom are over 65 years old [2]. Furthermore, it is predicted that the prevalence of AD will continue to rise dramatically over the coming decades with the increase in the number of people aged over 65 [2]. The cost of care for a patient with AD is often over €24,000 per annum, and can be as high as €70,000 [3]. Strategies for tackling AD may help to reduce the adverse impacts of AD on patients and resource utilisation.

It has been estimated that one third of AD cases might be attributable to modifiable risk factors [4]. Elevated blood pressure has been found to increase the risk of later-life cognitive impairment and AD [5]. Increased arterial stiffness has also been found to be predictive of cognitive decline [6]. It has also been observed that cerebral blood flow is reduced in AD, although it is not clear whether the link is causal [7]. Blood pressure and arterial stiffness increase with age, whilst cerebral blood flow decreases with age, which may contribute to the increased incidence of AD with age. Several

lifestyle and therapeutic interventions have been proposed to modify these risk factors, and therefore potentially reduce the risk of AD [2].

It may be possible to use wearable sensors to assess an individual’s risk of AD. Consumer devices such as smart watches and fitness bands routinely measure the arterial pulse wave (PW) [8], which is influenced by both the heart and blood vessels. Techniques have been proposed for analysing the PW to derive indicators of blood pressure, arterial stiffness, and the influence of ageing on the cardiovascular system. Based on this, we hypothesised that markers indicative of the risk of AD could be derived from PWs acquired from wearable sensors. Such markers could be reported to the individual, alongside recommendations of lifestyle changes, so that they could lower their risk of AD.

The aim of this feasibility study was to determine whether markers extracted from PWs might have utility for stratifying patients at risk of AD. Firstly, we investigated how changes in risk factors for AD (age, blood pressure and arterial stiffness) affect cerebral haemodynamics. Secondly, we assessed the potential utility of a range of features measured from the PW for detecting the changes in PW shape which are associated with risk factors for AD. This was achieved by analysing simulated PWs representative of subjects of different ages, and with different blood pressures and levels of arterial stiffness. The results indicate that risk factors for AD influence cerebral haemodynamics even during middle age, and that the accompanying changes in systemic haemodynamics could be detected using wearable sensors. If the findings are replicated in clinical studies, then this novel approach could provide early warning to patients at risk of AD, allowing them to adjust their lifestyle accordingly and potentially improve their cerebral haemodynamics.

2. Materials and Methods

2.1. Simulating Arterial Pulse Waves (PWs)

A one-dimensional model of arterial PW propagation was used to simulate PWs at multiple arterial sites. The model is based on the physical principles of conservation of mass, linear momentum and energy [9]. The model generated pressure, flow and photoplethysmogram (PPG) PWs, as described in [10]. PPG PWs are representative of those measured by smart wearables using photoplethysmography, a measure of the volume of arterial blood in a tissue bed. It is characterized by inflow, outflow and junction matching boundary conditions. The arterial network, shown in Figure 1(a), consisted of 116 arterial segments making up the larger arteries of the head, limbs, thoracic and abdominal organs [11]. Assumptions taken included: laminar flow, incompressible and Newtonian blood, and no energy losses at bifurcations. The pulse waves which were analysed in this study are shown in Figure 1(b), namely the flow wave at the internal carotid artery, BP wave at the brachial artery, and PPG waves at the neck (internal carotid artery) and wrist (radial artery).

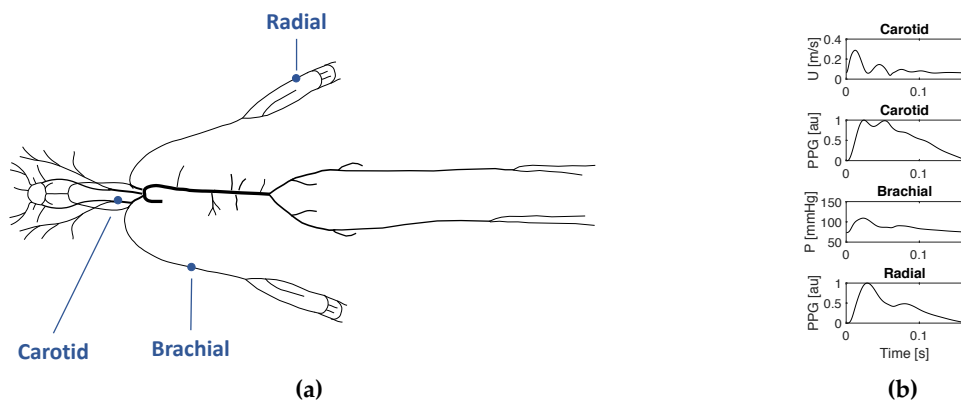


Figure 1. The model of arterial pulse wave (PW) propagation used to simulate PWs: (a) the arterial network, showing the locations of the PWs analysed in this study (adapted from [11]); (b) the PWs for the 25-year old baseline subject at the internal carotid (flow velocity - U and photoplethysmogram - PPG), brachial (blood pressure - BP) and radial (PPG) sites.

PWs representative of a sample of healthy adults were simulated by adjusting the model input parameters to reflect changes in age and normal physiological variation. Firstly, PWs were simulated for subjects aged 25 to 75 (in 10-year intervals), following the approach in [10]. This involved changing the cardiac, arterial and vascular bed parameters specified to the model to model the typical changes in heart function, arterial stiffness and geometry, and blood pressure which occur with age. Secondly, at each age PWs were simulated for a range of arterial stiffnesses indicative of typical inter-subject variation in arterial stiffness at that age. These simulations allowed the influences of AD risk factors on PWs to be investigated.

2.2. Investigating the Impact of Risk Factors on Haemodynamics

The impact of risk factors on blood pressure was assessed by calculating the mean, systolic and diastolic BPs at the brachial artery, representing the BP which is often measured in clinical settings and AD studies using a sphygmomanometer with a brachial cuff. Simulated changes in arterial stiffness were assessed by measuring the pulse wave velocity over the aortic path length, a technique which is commonly used to assess arterial stiffness. The impact on cerebral perfusion was assessed using the mean blood flow at the internal carotid artery. The internal carotid artery supplies blood to the circle of Willis, which in turn supplies blood to the brain.

2.3. Identifying Pulse Wave (PW) Features Indicative of Risk of Alzheimer’s Disease (AD)

A total of 31 features were extracted from PPG PWs at the wrist (radial artery) and neck (carotid artery) to assess the potential utility of PPG measurements at these sites for assessing the risk of AD. The features, and the methods used to extract them, are described in [11]. Briefly, the features were extracted by identifying fiducial points on the PWs, and then extracting feature measurements from the positions of the fiducial points, as shown in Figure 2.

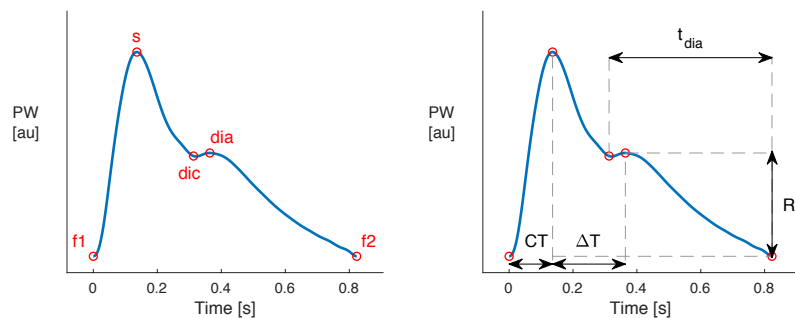


Figure 2. Extraction of features from PPG pulse waves (PWs), shown for the wrist PPG PW: (left) Fiducial points were identified on PWs; (right) Feature measurements were extracted from the positions of fiducial points. Exemplary features are shown; the full list is provided in [11].

The suitability of each feature for identifying haemodynamic changes associated with increased risk of AD was assessed by comparing the features to those for the 25-year old subject. To do so, we used the data corresponding to 25- to 75-year olds with elevated arterial stiffness. A one sample student’s t-test was used to test whether the features extracted from the PWs for the 35- to 75-year olds differed significantly from the value for the 25-year-old.

3. Results and Discussion

3.1. Changes in Risk Factors for Alzheimer’s Disease (AD)

The simulated changes in risk factors for AD are shown in Figure 3. The changes in BP (shown in (a), (b) and (c)) are similar to those observed *in vivo*, exhibiting increases in systolic and pulse pressure with age. Reference arterial stiffness values (shown in (d)) increased with age as reported in *in vivo* studies. These plots indicate that it may be possible to change an individual’s risk factors for AD by treating elevated systolic BP and arterial stiffness. For instance, a 45-year old with an

elevated arterial stiffness (shown by the upper red line in (d)) has a similar arterial stiffness to that of a normal 65-year old. Therefore, if interventions could reduce this arterial stiffness back to normal then this could reduce the effective vascular age by approximately 20 years. The changes in carotid flow rate are shown in Figure 3 (e). There was a substantial reduction with age, but little change with arterial stiffness. This indicates that the increased incidence of AD in older subjects may in part be due to a decrease in brain perfusion with age. This was largely due to the reduction in cardiac output prescribed to the model with increasing age in this study. This indicates that increased cardiac output may help to avoid the reduction in cerebral perfusion with age, although interventions to achieve this may in turn increase BP, which could be detrimental.

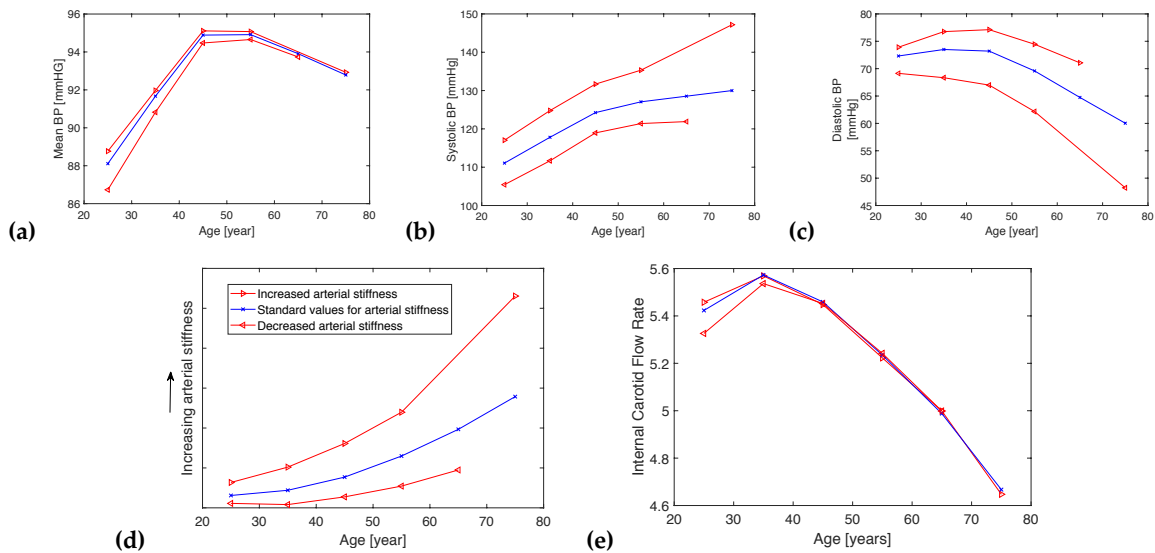


Figure 3. The simulated changes in risk factors for Alzheimer’s Disease (AD). Changes in mean, systolic and diastolic blood pressure (BP) with age are shown in (a), (b) and (c) respectively. The central blue lines indicate normal values for arterial stiffness at each age, upper red lines indicate increased stiffness, and lower red lines indicate lower stiffness. Reference arterial stiffness values are shown in (d), calculated from aortic pulse wave velocity. The changes in flow rate at the carotid artery are shown in (e).

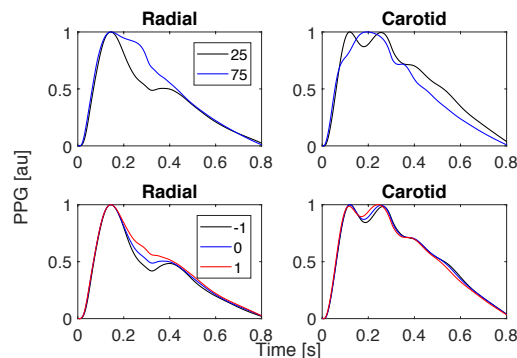


Figure 4. PPG pulse waves (PWs) at the wrist (radial artery, left) and neck (carotid artery, right) sites, shown for subjects aged 25 and 75 (upper panels) and for different levels of arterial stiffness (lower panels). The lower plots show the PWs obtained when varying the arterial stiffness by +/- 1 standard deviation from typical values.

3.2 Towards Pulse Wave Markers of Risk of Alzheimer’s Disease (AD)

Figure 4 shows the effects of changes in age and arterial stiffness on PPG PWs. The upper panels show PPG PWs at the radial and carotid arteries for 25- and 75-year old subjects, showing changes with age. Firstly, the diastolic peak, at 0.4 s in the 25-year PWs, diminishes with age. Secondly, the relative strength of the secondary systolic peak, at 0.27 s, increases with age. Similar

changes are observed in the PPG PWs for increased and decreased arterial stiffness in the lower panels of Figure 3. The change in radial PPG PWs is dominated by an increase in the strength of the secondary systolic peak with arterial stiffness, which results in the diastolic peak disappearing. The secondary systolic peak in the carotid PPG PWs occurs slightly earlier with increased stiffness. These marked changes with age and arterial stiffness suggest that it may be possible to identify changes in risk factors for AD from PWs. Indeed, a total of 28 out of the 31 features extracted from the PPG PW at the wrist changed significantly with increasing age, and 27 at the carotid artery. One would expect to observe similar changes when measuring PPG PWs using consumer devices: a smartwatch PPG measurement at the wrist, or the use of a smartphone to measure the PPG at the neck. Both of these approaches are suitable for use by the general population, providing opportunity to monitor markers of AD risk in everyday living rather than just clinical settings.

3.3 Relevance for Prognosis

A wide range of risk factors for AD have been identified [2]. It is believed that cerebral haemodynamics, and in particular brain hypoperfusion [7, 12-14], are associated with development of AD. The hypothesis, of brain hypoperfusion as a cause for AD, originates from studies that relate general anesthesia to dementia [15] and to brain blood flow reduction [16]. The approach presented here is designed for detecting systemic changes associated with causal cerebral changes. Remarkably, hypoperfusion seems to be correlated to Parkinson's disease [17] and other forms of dementia [18]. Therefore, this approach may have wider applications beyond AD.

3.4 Limitations and Future Work

The key limitation of this study is that it was conducted using a model of pulse wave propagation rather than *in vivo* data. This approach can be used to analyse the influence of individual factors on PWs, such as arterial stiffness, and to elucidate mechanisms relating systemic haemodynamics to those which are difficult to measure *in vivo*, such as cerebral blood flow. Further testing is required with wearable sensor data to determine whether these findings are replicated *in vivo*. In the future it would be informative to conduct a control-case longitudinal study based on measuring brain perfusion. Suitable cohorts include: healthy patients; AD patients; and patients with some symptoms but no diagnosis of AD, such as those with a positive cognitive test result.

4. Conclusions

In this study, a model of blood flow was used to investigate the influence of risk factors for AD on PWs. We found that the PPG PW at the wrist is affected by changes in age and arterial stiffness. This suggests that it may be possible to use wearable sensors such as smart watches to provide early warning of increased risk of AD due to haemodynamic risk factors. If the findings are replicated in clinical studies then this approach could be used to encourage patients to adjust their lifestyle and receive treatments to lower their risk of AD.

Funding: This research was funded by the British Heart Foundation, grant number [PG/15/104/31913]. It was additionally supported by the Wellcome/EPSRC Centre for Medical Engineering at King's College London, grant number [WT 203148/Z/16/Z]. The views expressed are those of the authors and not necessarily those of the British Heart Foundation, Wellcome Trust or EPSRC.

Conflicts of Interest: The authors declare no conflict of interest. The funders had no role in the design of the study; in the collection, analyses, or interpretation of data; in the writing of the manuscript, or in the decision to publish the results.

References

1. Alzheimer's Association. 2017 Alzheimer's disease facts and figures. *Alzheimer's Dement.* **2017**, *13*, 325-373, doi: 10.1016/j.jalz.2017.02.001.
2. Winblad, B.; Amouyel, P.; Andrieu, S.; Ballard, C.; Brayne, C.; Brodaty, H.; Cedazo-Minguez, A.; Dubois, B.; Edvardsson, D.; Feldman, H.; Fratiglioni, L.; Frisoni, GB.; Gauthier, S.; Georges, J.; Graff, C.; Iqbal, K.;

- Jessen, F.; Johansson, G.; Jönsson, L.; Kivipelto, M.; Knapp, M.; Mangialasche, F.; Melis, R.; Nordberg, A.; Rikkert, M.O.; Qiu, C.; Sakmar, T.P.; Scheltens, P.; Schneider, L.S.; Sperling, R.; Tjernberg, L.O.; Waldemar, G.; Wimo, A.; Zetterberg, H. Defeating Alzheimer's disease and other dementias: a priority for European science and society. *Lancet Neurol.* **2016**, *15*, 455–532, doi: 10.1016/S1474-4422(16)00062-4.
3. Gustavsson, A.; Brinck, P.; Bergvall, N.; Kolasa, K.; Wimo, A.; Winblad, B.; Jönsson, L. Predictors of costs of care in Alzheimer's disease: A multinational sample of 1222 patients. *Alzheimer's Dement.* **2011**, *7*, 318–327, doi: 10.1016/j.jalz.2010.09.001.
 4. Norton, S.; Matthews, F.E.; Barnes, D.E.; Yaffe, K.; Brayne, C. Potential for primary prevention of Alzheimer's disease: An analysis of population-based data. *Lancet Neurol.* **2014**, *13*, 788–794, doi: 10.1016/S1474-4422(14)70136-X.
 5. Reitz, C.; Mayeux, R. Alzheimer disease: Epidemiology, diagnostic criteria, risk factors and biomarkers. *Biochem Pharmacol.* **2014**, *88*, 640–651, doi: 10.1016/j.bcp.2013.12.024.
 6. Pase, M.P.; Herbert, A.; Grima, N.A.; Pipingas, A.; O'Rourke, M.F. Arterial stiffness as a cause of cognitive decline and dementia: A systematic review and meta-analysis. *Intern Med J.* **2012**, *42*, 808–815, doi: 10.1111/j.1445-5994.2011.02645.x.
 7. Austin, B.P.; Nair, V.A.; Meier, T.B.; Xu, G.; Rowley, H.A.; Carlsson, C.M.; Johnson, S.C.; Prabhakaran, V. Effects of hypoperfusion in Alzheimer's disease. *J Alzheimer's Dis.* **2011**, *26*, 123–133, doi: 10.3233/JAD-2011-0010.
 8. Zhang, Z.; Pi, Z.; Liu, B. TROIKA: A general framework for heart rate monitoring using wrist-type photoplethysmographic signals during intensive physical exercise. *IEEE Trans Biomed Eng.* **2015**, *62*, 522–531, doi: 10.1109/TBME.2014.2359372.
 9. Alastruey, J.; Parker, K.H.; Sherwin, S.J. Arterial pulse wave haemodynamics. *11th International Conference on Pressure Surges* **2012**, 401–443.
 10. Charlton, P. H.; Mariscal Harana, J.; Vennin, S.; Willemet, M.; Chowienczyk, P.; Alastruey, J. Modelling arterial pulse wave propagation during healthy ageing. In *World Congress of Biomechanics 2018*; Dublin, Ireland, 2018.
 11. Charlton, P. H.; Celka, P.; Farukh, B.; Chowienczyk, P.; Alastruey, J. Assessing mental stress from the photoplethysmogram: a numerical study. *Physiol. Meas.* **2018**, *39*, 054001, doi:10.1088/1361-6579/aabe6a.
 12. Roher, A.E.; Esh, C.; Kokjohn, T.A.; Kalback, W.; Luehrs, D.C.; Seward, J.D.; Sue, L.I.; Beach, T.G. Circle of willis atherosclerosis is a risk factor for sporadic Alzheimer's disease. *Arterioscler Thromb Vasc Biol.* **2003**, *23*, 2055–2062. doi: 10.1161/01.ATV.0000095973.42032.44.
 13. Corder, E.H.; Ervin, J.F.; Lockhart, E.; Szymanski, M.H.; Schmechel, D.E.; Hulette, C.M. Cardiovascular Damage in Alzheimer Disease: Autopsy Findings From the Bryan ADRC. *J Biomed and Biotechnol.* **2005**, *2*, 189–197, doi:10.1155/JBB.2005.189.
 14. Santos, C.Y.; Snyder, P.J.; Wu, W.-C.; Zhang, M.; Echeverria, A.; Alber, J. Pathophysiologic relationship between Alzheimer's disease, cerebrovascular disease, and cardiovascular risk: A review and synthesis. *Alzheimer's Dement (Amst).* **2017**, *7*, 69–87. doi:10.1016/j.dadm.2017.01.005.
 15. Yang, C.-W., & Fuh, J.-L. Exposure to general anesthesia and the risk of dementia. *J Pain Res.* **2015**, *8*, 711–718, doi: 10.2147/JPR.S55579
 16. Simon, G. General anesthesia and hepatic circulation. *Can J Physiol and Pharmacol.* **1987**, *65*, 1762–79, doi: 10.1139/y87-276
 17. Kamagata, K.; Motoi, Y.; Hori, M.; Suzuki, M.; Nakanishi, A.; Shimoji, K.; Kyougoku, S.; Kuwatsuru, R.; Sasai, K.; Abe, O.; Mizuno, Y.; Aoki, S. and Hattori, N. Posterior hypoperfusion in parkinson's disease With and without dementia measured with arterial spin labeling MRI. *J. Magn. Reson. Imaging* **2011**, *33*: 803–807, doi:10.1002/jmri.22515
 18. Ruitenberg, A.; den Heijer, T.; Bakker, S. L.; van Swieten, J. C.; Koudstaal, P. J.; Hofman, A. and Breteler, M. M., Cerebral hypoperfusion and clinical onset of dementia: The Rotterdam study. *Ann Neurol.*, **2005**, *57*, 789–794, doi:10.1002/ana.20493

