



## King's Research Portal

DOI:  
[10.18742/pub01-002](https://doi.org/10.18742/pub01-002)

*Document Version*  
Publisher's PDF, also known as Version of record

[Link to publication record in King's Research Portal](#)

*Citation for published version (APA):*  
Dowling, T. (2019, Mar 18). Kapiti research farm and ranch map 1. King's College London.  
<https://doi.org/10.18742/pub01-002>

### **Citing this paper**

Please note that where the full-text provided on King's Research Portal is the Author Accepted Manuscript or Post-Print version this may differ from the final Published version. If citing, it is advised that you check and use the publisher's definitive version for pagination, volume/issue, and date of publication details. And where the final published version is provided on the Research Portal, if citing you are again advised to check the publisher's website for any subsequent corrections.

### **General rights**

Copyright and moral rights for the publications made accessible in the Research Portal are retained by the authors and/or other copyright owners and it is a condition of accessing publications that users recognize and abide by the legal requirements associated with these rights.

- Users may download and print one copy of any publication from the Research Portal for the purpose of private study or research.
- You may not further distribute the material or use it for any profit-making activity or commercial gain
- You may freely distribute the URL identifying the publication in the Research Portal

### **Take down policy**

If you believe that this document breaches copyright please contact [librarypure@kcl.ac.uk](mailto:librarypure@kcl.ac.uk) providing details, and we will remove access to the work immediately and investigate your claim.

# Kapiti Research Farm (ILRI) - Kenya - Map I

- KCL - ILRI monitoring masts
- ◆ Old boma
- Active water pump
- Temporary water pump
- Old water pump
- Uncategorized water infrastructure
- Building
- Cleared land / workings
- Cultivated land
- Management units
- Water limited grazing
- ◆ Active boma

- Land condition**
- Bare soil
  - Shrub encroachment
  - Dense riparian mixed Acacia
  - Dense riparian mixed Acacia, shrub encroachment
  - Lawn
  - Lawn, shrub encroachment
  - Low moisture retention
  - Low moisture retention, shrub encroachment
  - Swampy, overgrazed, shrub encroachment
  - Swampy, undergrazed, shrub encroachment

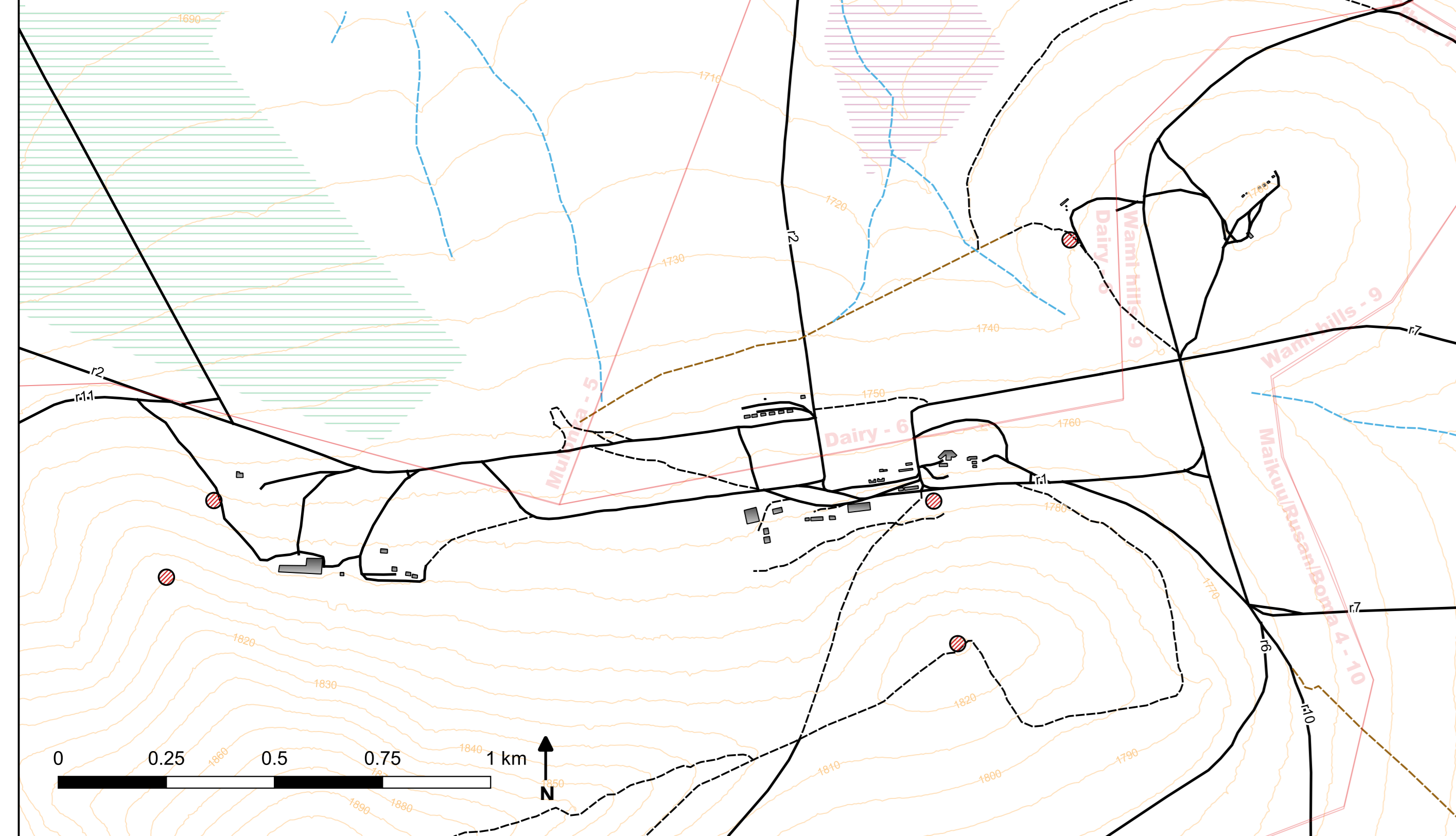
**Map description**  
 Projection: WGS84 - EPSG 4326  
 Scale: 1:22 000 (one grid square is 1.11 km)

This is map I of III of the ILRI research farm 'Kapiti Ranch' in 2018. Map I presents the full farm relevant information. Mapping was carried out on aerial photos taken in 2014 and then updated using high resolution satellite images captured in 2018. Watercourse mapping was carried out using a LiDAR derived digital terrain model also captured in 2014. Note that only within the farm borders is fully mapped. The area around the borders is given for context but not fully mapped. Place names and farm contextual information provided by ILRI staff in early 2019. Thanks in particular to Iona Gluecks, Lutz Merbold, Sonja Leitner, Francesco Fava and Jason Sircely.

Primary map: Kapiti ranch  
 Inset map (1): Kapiti central farm buildings and accommodation area (1:9 000).  
 Inset map (2): The area around the satellite data validation masts (1:12 000).

DOI:10.18742/PUB01-002  
 ©2018 T.Dowling - Creative Commons Attribution-ShareAlike Licence.  
 The shapefiles used in the construction of this map can be found at <http://doi.org/doi:10.18742/RDM01-451>.

## Inset (1): area surrounding Kapiti farm house



## Inset (2): area surrounding the KCL - ILRI masts

