



King's Research Portal

DOI:

[10.1093/brain/awy148](https://doi.org/10.1093/brain/awy148)

[Link to publication record in King's Research Portal](#)

Citation for published version (APA):

Spejo, A. B., & Moon, L. D. F. (2018). An intriguing way to enhance rehabilitation of grasping in rats after spinal cord injury. *Brain*, 141(7), 1888-1891. <https://doi.org/10.1093/brain/awy148>

Citing this paper

Please note that where the full-text provided on King's Research Portal is the Author Accepted Manuscript or Post-Print version this may differ from the final Published version. If citing, it is advised that you check and use the publisher's definitive version for pagination, volume/issue, and date of publication details. And where the final published version is provided on the Research Portal, if citing you are again advised to check the publisher's website for any subsequent corrections.

General rights

Copyright and moral rights for the publications made accessible in the Research Portal are retained by the authors and/or other copyright owners and it is a condition of accessing publications that users recognize and abide by the legal requirements associated with these rights.

- Users may download and print one copy of any publication from the Research Portal for the purpose of private study or research.
- You may not further distribute the material or use it for any profit-making activity or commercial gain
- You may freely distribute the URL identifying the publication in the Research Portal

Take down policy

If you believe that this document breaches copyright please contact librarypure@kcl.ac.uk providing details, and we will remove access to the work immediately and investigate your claim.

An intriguing way to enhance rehabilitation of grasping in rats after spinal cord injury

Dr Aline Barroso Spejo and Dr Lawrence D.F. Moon

Neurorestoration Group
King's College London
Wolfson Centre for Age-Related Diseases
Institute of Psychiatry, Psychology & Neuroscience
Guy's Campus
16-20 Newcomen Street
London
SE1 1UL

Rehabilitation after nervous system injury, such as spinal cord injury or stroke, can improve outcomes when undertaken in the acute or chronic phase (Ward 2017) but it rarely restores all lost function in humans. Rehabilitation can be exhausting and the dose of rehabilitation available to each patient is also limited by its expense: adjunct therapies that enhance rehabilitation would thus be of great value. Animal studies indicate too that the effectiveness of rehabilitation declines with time since spinal cord injury. In this issue of *Brain*, a team led by Karim Fouad reports, perhaps surprisingly and counterintuitively, that treatment with bacterial endotoxins (lipopolysaccharides; LPS) can enhance medium or high intensity rehabilitation in rats with spinal cord injuries that occurred two months previously (Torres-Espin *et al.* 2018).

This study is an extension of work dating back many decades that indicates that bacterial endotoxins (by themselves or in combination with other treatments) can improve anatomical and functional recovery after acute spinal cord injury [reviewed in (Popovich *et al.* 2012)]. In the present study, adult rats received mid-cervical (C4) unilateral dorsolateral quadrant spinal cord injuries that persistently impaired their ability to grasp and retrieve sugar pellets with their previously-preferred paw. Eight and 11 weeks later, rats received intraperitoneal injection of saline or lipopolysaccharides at doses that induced effects within the cervical spinal cord (*e.g.*, microglial activation) but that induced only mild sickness for less than two days (body temperature was typically increased only $\sim 1^{\circ}\text{C}$). From eight weeks, rats received either low, medium or higher doses of rehabilitation of pellet retrieval for an additional seven or eight weeks.

The key message of the paper is that medium or high (but not low) doses of rehabilitation led to greater success in pellet retrieval in rats treated with LPS than with saline. In animals treated with LPS and high doses of rehabilitation, wrist movements during retrieval ("supination") were more normal; anterograde tract tracing showed increased sprouting of the injured corticospinal tract in the cervical segment rostral to the injury; and microstimulation of motor cortex evoked greater output to the contralateral (disabled) posterior forelimb muscles.

So how do lipopolysaccharides enhance rehabilitation in rats after spinal cord injury? This is a complex question that will take many years to address adequately as we do not yet know how even an intact system reaches and grasps. But given the animal data showing that that rehabilitation as a monotherapy is more efficient after acute spinal cord injury than after chronic injury, then perhaps, when given after chronic injury, LPS enhances rehabilitation by

recapitulating some of the inflammatory components of the acutely injured state. Acutely, spinal cord injury generates Damage Associated Molecular Pattern molecules (DAMPs) and opens the blood-brain barrier, facilitating the influx of inflammatory peripheral cells into the injury site. Both beneficial and harmful effects have been attributed to the presence and activation of microglia, macrophages and lymphocytes. At the injury site, activated immune cells contribute to the production of cytokines, proteolytic enzymes and matrix metalloproteinases inducing a reactive process of secondary cell death, leading to increased cavitation and cyst formation, and exacerbating neurological dysfunction. Paradoxically, inflammation can also be beneficial. The effects of macrophages at the injury site depend on the balance of macrophage subtypes (often dichotomised as M1 or M2 but shown by transcriptomics to be spectral). “Classically activated (M1)” macrophages are pro-inflammatory and contribute to glial scar formation and production of pro-inflammatory cytokines, reactive oxygen species, nitric oxide and proteolytic enzymes that lead to extracellular matrix degradation and tissue damage. “Alternatively activated (M2)” macrophages are anti-inflammatory, provide neural and axonal trophic support, partially degrade the glial scar and induce inflammation resolution, thus contributing to wound healing and tissue re-modelling. Despite M2 macrophage activities, the resolution of inflammation after spinal cord injury is incomplete and the presence of pro-inflammatory macrophages is maintained for long periods [reviewed by (Gensel and Zhang 2015)].

To enhance rehabilitation, what are the key receptors to which LPS must bind and where are they? This is not yet known, but others have shown that LPS binds to a co-receptor complex – including CD14, LPS-binding protein and TLR4 – on microglia/macrophages, activating them via TLR4 for pathogen clearance and boosting the innate immune response. LPS-activated macrophages acquire a pro-inflammatory phenotype (M1) and secrete oxygen free radicals, IL-1, IL-6, IL-12, TNF-alpha, inducible nitric oxide synthase and chemoattractants that recruit additional leucocytes, possibly creating a neurotoxic environment. But the presence of a pro-inflammatory mediator at the site of injury is not sufficient reason to assume that it will have detrimental effects, and evaluation in experimental animals is necessary to determine whether this is in fact the case. The experimental conditions, such as time and dose of LPS injections, as well as the injury model seem to be crucial in determining whether the overall effect will be neurotoxic, neuroprotective or neuroreparative.

Other authors have also reported beneficial effects of single or multiple intraperitoneal injections of low doses of LPS and other similar inflammatory agents when applied in the acute phase after a lesion. Guth and colleagues observed reduced cavitation and ingrowth of a greater number of axons, frequently gathered into fascicles, after spinal cord injury and LPS treatment in rats (Guth *et al.* 1994). Vallières and collaborators observed accelerated myelin clearance from white matter tracts undergoing Wallerian degeneration after spinal dorsal hemisection following daily systemic injections of LPS; the injections recruited activated macrophages to the injury site, although this was not sufficient to promote regeneration of injured sensory axons (Vallieres *et al.* 2006). Fouad’s work goes beyond this by showing that LPS can enhance recovery after chronic spinal cord injury when combined with medium or high intensity rehabilitation.

How did LPS and high intensity rehabilitation enhance corticospinal tract sprouting, neural output to affected forelimb muscles and functional recovery? In this study, fluorescently-labelled LPS was detected in macrophages in the liver and at the site of injury, but not in the spinal cord one segment rostral to the injury site and not in cortex. If LPS activates microglia/macrophages

at the injury site, might some of the mediators liberated by these cells (e.g., Brain-Derived Neurotrophic Factor) cause sprouting of corticospinal axons? Perhaps LPS-induced inflammation stimulated sprouting of axons and then rehabilitation was important for axonal pathfinding and for strengthening of functionally useful connections. This refinement may happen only to circuits related to the rehabilitated task, as Torres-Espín *et al.* found no improvement in other tasks. In the future, trans-synaptic tracing and chemogenetic silencing strategies could be used to identify the pathways that confer improved hand and arm movements after LPS and rehabilitation. Others have shown that application of LPS to motor cortex does not induce regeneration of corticospinal axons through or distal to a C3/4 lesion site (Hossain-Ibrahim *et al.* 2006). If LPS did not induce regeneration of corticospinal axons around or through the injury site in Torres-Espín's work, then one possibility is that corticospinal sprouts rostral to the injury formed synapses on short propriospinal neurons in upper cervical (C3-C4) segments that project to lower (C6-T1) segments in the white matter spared ventral to the C4 dorsolateral injury (Bareyre *et al.* 2004) (Figures 1A and B). Another possibility is that the non-lesioned corticospinal tract sprouted collaterals across the midline below the level of the spinal cord injury to form synapses on premotor interneurons (Figures 1C and D) as the spared corticospinal tract is known to sprout in response to various potential therapies for unilateral spinal cord injury, including LPS plus neurotrophin-3 (Chen *et al.* 2008). In a series of papers, David Shine's group cut one corticospinal tract in the brainstem of rats and then overexpressed neurotrophin-3 in lumbar motor neurons on the more-disabled side. Neurotrophin-3 induced sprouting of uninjured corticospinal axons across the midline but only when applied within two weeks of injury and not when applied four months after injury (Chen *et al.* 2006) unless LPS was injected intraperitoneally (Chen *et al.* 2008). The parallel between Shine's work and Fouad's work is that LPS synergised with other therapies (neurotrophin-3 or rehabilitation, respectively) in the chronic phase after injury (Chen *et al.* 2006; Chen *et al.* 2008).

To achieve high levels of neurotrophin-3 expression in motor neurons, Shine's group applied an adenoviral vector encoding human preproNeurotrophin-3 to the sciatic nerve on the more-disabled side, having cut the nerve to ensure efficient uptake of the vector. It is interesting that this proinflammatory stimulus (the delivery of a non-self transgene using an immunogenic vector combined with a proinflammatory nerve injury) was insufficient by itself to promote corticospinal tract sprouting in their chronic paradigm, which indicates that there is something rather special about the stimulus delivered by LPS.

Could LPS be used to enhance neurorehabilitation in people? People with spinal cord injury are often immunocompromised and elevated temperature can exacerbate cell death so exposure of vulnerable subjects to a proinflammatory pyrogen might be ruled out for the acute phase. In the past, more than 100 people with acute or chronic spinal cord injury or disease have been dosed with preparations of bacterial polysaccharides although these case histories were only superficially documented (Friedlander and Bailey 1953). To our knowledge there have been no clinical trials of LPS for spinal cord injury, although clinical trials of LPS have been run for other conditions. A fuller understanding of the mechanisms by which LPS induces benefit might enable a targeted approach that can generate Intellectual Property that could enable expensive clinical trials: engineered antibodies or small molecules might be developed against the key receptor/cell type.

In closing, it is worth emphasising that evidence continues to accumulate that intensive rehabilitation by itself improves outcome even in people with chronic neurological injuries (Ward

2017). More therefore needs to be done by health care systems to make intensive rehabilitation more widely available to those who need and want more. In the longer term, adjunct drug or neurostimulatory therapies may enable greater gains to be made.

Glossary terms

- LPS: Lipopolysaccharides are endotoxins that comprise a large part of the outer membrane of gram negative bacteria (e.g., the studies by Fouad and Shine used *E. Coli* serotype O55:B5, >500,000 Endotoxin Units/mg)
- NT-3: Neurotrophin-3 is a growth factor made abundantly in various tissues (e.g., muscle) during infant development and which is necessary for the wiring-up of some neural circuits involved in movement.
- CD14: Cluster of differentiation 14 is a co-receptor that binds to LPS in the presence of Lipopolysaccharide Binding Protein. It exists as both a soluble plasma protein and a GPI-linked protein.
- TLR-4: Toll-Like Receptor 4 is a transmembrane pattern recognition co-receptor for LPS (and HSP-60) that leads to phagocyte activation, stimulating the production of cytokines and microbicidal substances by these cells.

Figure Legend

Figure 1: Lipopolysaccharides and high intensity rehabilitation may induce new circuit formation. (A, B) Torres-Espín *et al.*, 2018 show in rats that high intensity rehabilitation of grasping initiated eight weeks after dorsolateral cervical spinal cord injury is more effective when combined with intraperitoneal injection of lipopolysaccharides. Enhanced sprouting of the affected corticospinal tract rostral to the injury (red sprouts in panel A) was accompanied by increased output to affected forelimb muscles perhaps via spared short propriospinal neurons (green neuron in A and B), the axons of which travel in white matter ventral to the injury site. (C, D) Future research may show whether other pathways are also involved. For example, the spared corticospinal tract from the other hemisphere (blue pathway in C and D) may sprout axons across the spinal midline (green sprouts in D) to form synapses on premotor interneurons involved in grasping. This kind of neuroplasticity has been shown before in the lumbar spinal cord when rats are treated intraperitoneally with lipopolysaccharides and intraneural injection on the more-disabled side of an adenoviral vector encoding neurotrophin-3, four months after unilateral corticospinal tract axotomy in the brainstem (Chen *et al* 2008).

References

- Bareyre FM, Kerschensteiner M, Raineteau O, Mettenleiter TC, Weinmann O and Schwab ME
The injured spinal cord spontaneously forms a new intraspinal circuit in adult rats. *Nat Neurosci* 2004; 7: 269-277.
- Chen Q, Smith GM and Shine HD Immune activation is required for NT-3-induced axonal plasticity in chronic spinal cord injury. *Exp Neurol* 2008; 209: 497-509.
- Chen Q, Zhou L and Shine HD Expression of neurotrophin-3 promotes axonal plasticity in the acute but not chronic injured spinal cord. *J Neurotrauma* 2006; 23: 1254-1260.

- Friedlander WJ and Bailey P Clinical use of piromen in spinal cord diseases and injury. *Neurology* 1953; 3: 684-690.
- Gensel JC and Zhang B Macrophage activation and its role in repair and pathology after spinal cord injury. *Brain Res* 2015; 1619: 1-11.
- Guth L, Zhang Z, DiProspero NA, Joubin K and Fitch MT Spinal cord injury in the rat: treatment with bacterial lipopolysaccharide and indomethacin enhances cellular repair and locomotor function. *Experimental neurology* 1994; 126: 76-87.
- Hossain-Ibrahim MK, Rezajooi K, MacNally JK, Mason MR, Lieberman AR and Anderson PN Effects of lipopolysaccharide-induced inflammation on expression of growth-associated genes by corticospinal neurons. *BMC Neurosci* 2006; 7: 8.
- Popovich PG, Tovar CA, Wei P, Fisher L, Jakeman LB and Basso DM A reassessment of a classic neuroprotective combination therapy for spinal cord injured rats: LPS/pregnenolone/indomethacin. *Exp Neurol* 2012; 233: 677-685.
- Torres-Espín A, Forero J, Fenrich KK, Lucas-Osma AM, Krajacic A, Schmidt E, Vavrek R, Raposo P, Bennett DJ, Popovich PG and Fouad K Eliciting inflammation enables successful rehabilitative training in chronic spinal cord injury. *Brain* 2018.
- Vallieres N, Berard JL, David S and Lacroix S Systemic injections of lipopolysaccharide accelerates myelin phagocytosis during Wallerian degeneration in the injured mouse spinal cord. *Glia* 2006; 53: 103-113.
- Ward NS Restoring brain function after stroke - bridging the gap between animals and humans. *Nat Rev Neurol* 2017; 13: 244-255.

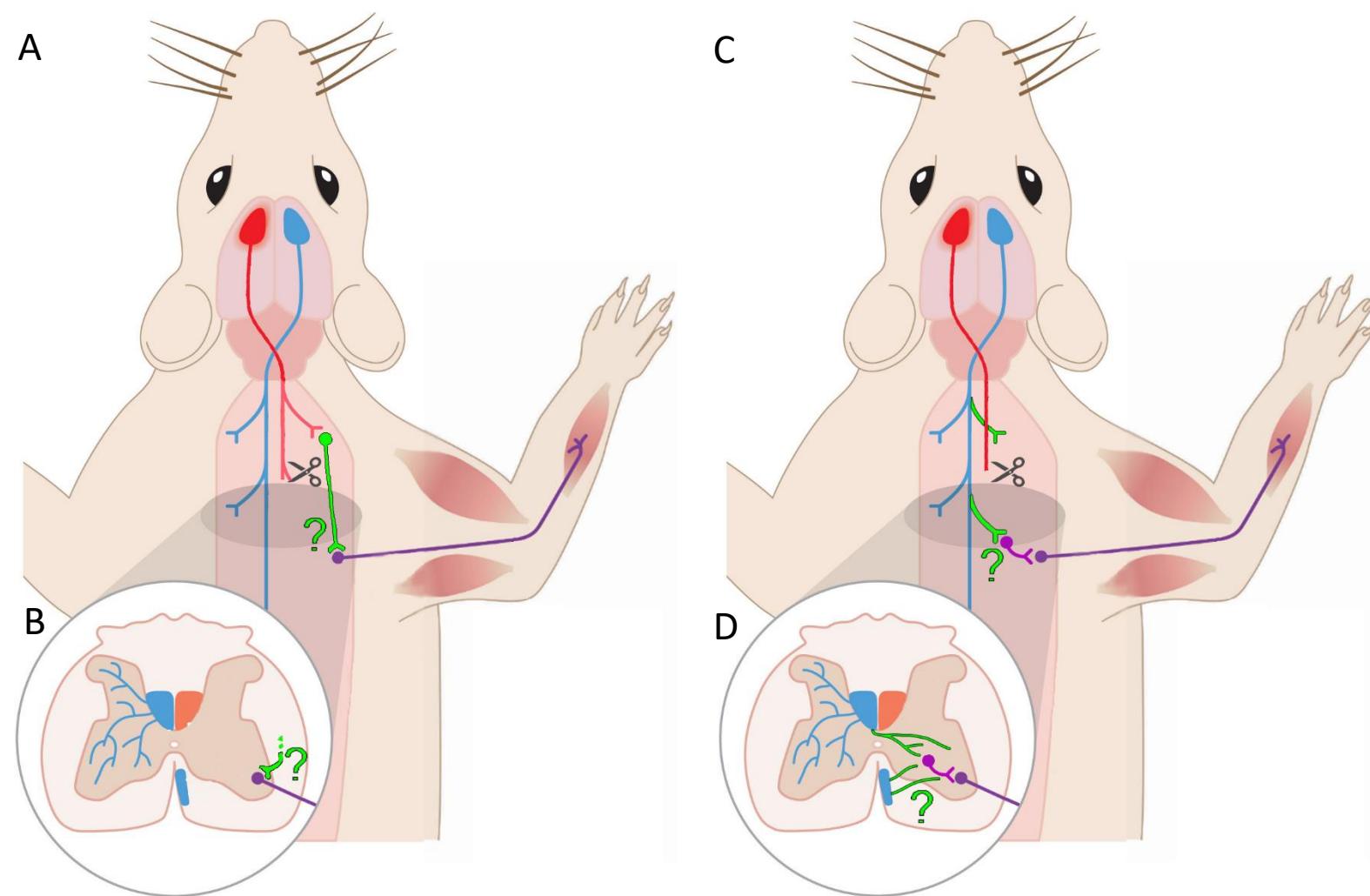


Figure 1: Lipopolysaccharides and high intensity rehabilitation may induce new circuit formation. (A, B) Torres-Espín *et al.*, 2018 show in rats that high intensity rehabilitation of grasping initiated eight weeks after dorsolateral cervical spinal cord injury is more effective when combined with intraperitoneal injection of lipopolysaccharides. Enhanced sprouting of the affected corticospinal tract rostral to the injury (red sprouts in panel A) was accompanied by increased output to affected forelimb muscles perhaps via spared short propriospinal neurons (green neuron in A and B) whose axons travel in white matter ventral to the injury site. (C, D) Future research may show whether other pathways are also involved. For example, the spared corticospinal tract from the other hemisphere (blue pathway in C and D) may sprout axons across the spinal midline (green sprouts in D) to form synapses on premotor interneurons involved in grasping. This kind of neuroplasticity has been shown before in the lumbar spinal cord when rats are treated intraperitoneally with lipopolysaccharides and intraneural injection on the more-disabled side of an adenoviral vector encoding Neurotrophin-3 four months after unilateral corticospinal tract axotomy in the brainstem (Chen *et al* 2008).