



King's Research Portal

DOI:

[10.1038/s41398-020-00885-4](https://doi.org/10.1038/s41398-020-00885-4)

Document Version

Publisher's PDF, also known as Version of record

[Link to publication record in King's Research Portal](#)

Citation for published version (APA):

Schmidt, A., Davies, C., Paloyelis, Y., Meyer, N., De Micheli, A., Ramella-Cravaro, V., Provenzani, U., Aoki, Y., Rutigliano, G., Cappucciati, M., Oliver, D., Murguia, S., Zelaya, F., Allen, P., Shergill, S., Morrison, P., Williams, S., Taylor, D., Borgwardt, S., ... Fusar-Poli, P. (2020). Acute oxytocin effects in inferring others' beliefs and social emotions in people at clinical high risk for psychosis. *Translational psychiatry*, 10(1), Article 203. <https://doi.org/10.1038/s41398-020-00885-4>

Citing this paper

Please note that where the full-text provided on King's Research Portal is the Author Accepted Manuscript or Post-Print version this may differ from the final Published version. If citing, it is advised that you check and use the publisher's definitive version for pagination, volume/issue, and date of publication details. And where the final published version is provided on the Research Portal, if citing you are again advised to check the publisher's website for any subsequent corrections.

General rights

Copyright and moral rights for the publications made accessible in the Research Portal are retained by the authors and/or other copyright owners and it is a condition of accessing publications that users recognize and abide by the legal requirements associated with these rights.

- Users may download and print one copy of any publication from the Research Portal for the purpose of private study or research.
- You may not further distribute the material or use it for any profit-making activity or commercial gain
- You may freely distribute the URL identifying the publication in the Research Portal

Take down policy

If you believe that this document breaches copyright please contact librarypure@kcl.ac.uk providing details, and we will remove access to the work immediately and investigate your claim.

ARTICLE

Open Access

Acute oxytocin effects in inferring others' beliefs and social emotions in people at clinical high risk for psychosis

André Schmidt¹, Cathy Davies², Yannis Paloyelis³, Nicholas Meyer⁴, Andrea De Micheli^{2,5}, Valentina Ramella-Cravaro², Umberto Provenzani^{2,6}, Yuta Aoki^{7,8,9}, Grazia Rutigliano², Marco Cappucciati², Dominic Oliver², Silvia Murguia¹⁰, Fernando Zelaya³, Paul Allen^{4,11}, Sukhi Shergill⁴, Paul Morrison⁴, Steve Williams^{10,3}, David Taylor¹², Stefan Borgwardt^{1,13}, Hidenori Yamasue⁷, Philip McGuire^{4,5,14} and Paolo Fusar-Poli^{10,24,6,14}

Abstract

Social deficits are key hallmarks of the Clinical High Risk for Psychosis (CHR-P) state and of established psychotic disorders, and contribute to impaired social functioning, indicating a potential target for interventions. However, current treatments do not significantly ameliorate social impairments in CHR-P individuals. Given its critical role in social behaviour and cognition, the oxytocinergic (OT) system is a promising target for novel interventions in CHR-P subjects. In a double-blind, placebo-controlled, crossover design, 30 CHR-P males were studied using functional magnetic resonance imaging (fMRI) on two occasions, once after 40IU self-administered intranasal OT and once after placebo. A modified version of the Sally-Anne task was used to assess brain activation during inferring others' beliefs and social emotions. The Reading the Mind in the Eyes Test was acquired prior to the first scan to test whether OT effects were moderated by baseline social-emotional abilities. OT did not modulate behavioural performances but reduced activation in the bilateral inferior frontal gyrus compared with placebo while inferring others' social emotions. Furthermore, the relationship between brain activation and task performance after OT administration was moderated by baseline social-emotional abilities. While task accuracy during inferring others' social emotion increased with decreasing activation in the left inferior frontal gyrus in CHR-P individuals with low social-emotional abilities, there was no such relationship in CHR-P individuals with high social-emotional abilities. Our findings may suggest that acute OT administration enhances neural efficiency in the inferior frontal gyrus during inferring others' social emotions in those CHR-P subjects with low baseline social-emotional abilities.

Introduction

Deficits in social functioning are core features of psychosis and predictive for the onset, development, course and outcome of this illness¹. Social functioning impairments are a distinctive characteristic of individuals at

Clinical High Risk for Psychosis (CHR-P) to the point that they represent the most impaired neurocognitive domain (Hedge's $g = 0.55$) in this patient population^{2–4}. However, currently available approaches for CHR-P individuals fail to ameliorate their social impairments, indicating the need for novel and more effective interventions that map onto core pathological processes underlying the CHR-P features^{5,6}. Mind-reading, i.e., the ability to infer others' mental states, is integral for social interactions⁷ and impaired in early psychosis patients⁸ and CHR-P subjects^{9,10}. Mental state attribution or perspective taking is a

Correspondence: André Schmidt (andre.schmidt@unibas.ch)

¹Department of Psychiatry (UPK), University of Basel, Basel, Switzerland

²Early Psychosis: Interventions and Clinical-detection (EPIC) lab, Department of Psychosis Studies, Institute of Psychiatry, Psychology & Neuroscience, King's College London, London, UK

Full list of author information is available at the end of the article

© The Author(s) 2020



Open Access This article is licensed under a Creative Commons Attribution 4.0 International License, which permits use, sharing, adaptation, distribution and reproduction in any medium or format, as long as you give appropriate credit to the original author(s) and the source, provide a link to the Creative Commons license, and indicate if changes were made. The images or other third party material in this article are included in the article's Creative Commons license, unless indicated otherwise in a credit line to the material. If material is not included in the article's Creative Commons license and your intended use is not permitted by statutory regulation or exceeds the permitted use, you will need to obtain permission directly from the copyright holder. To view a copy of this license, visit <http://creativecommons.org/licenses/by/4.0/>.

complex multidimensional construct and involves the ability to infer the thoughts or beliefs of others (i.e. cognitive empathy), but also the ability to infer the emotions or feelings of others (i.e. emotional empathy)¹¹. Past evidence showed that cognitive and emotional aspects of empathy are partly dissociable systems¹². While neurocognitive dysfunction significantly accounts for impairments during theory of mind (ToM) tasks in CHR-P individuals¹⁰, they still remain evident after adjusting for deficits in neurocognition⁸, indicating the crucial contribution of impaired emotional empathy to ToM deficits in CHR-P. Meta-analytical evidence identified the left anterior midcingulate cortex/dorsal anterior cingulate cortex, bilateral insula/inferior frontal gyrus and bilateral supplementary motor area as being consistently activated in empathy¹³. While the bilateral anterior insula/inferior frontal gyrus is specifically activated during emotional empathy, activation in the left midcingulate cortex and left anterior insula is more related to the cognitive aspect of empathy¹³. Previous functional magnetic resonance imaging (fMRI) studies in CHR-P individuals reported increased activation in the prefrontal cortex including the inferior frontal gyrus, posterior cingulate cortex and the temporoparietal cortex during inferring others' mental status relative to healthy controls, suggesting a compensatory overactivation of brain regions critical for empathic responses during mental state attribution^{14,15}. Another study observed reduced bilateral inferior frontal gyrus activation during inferring others' emotions but not beliefs in CHR-P subjects relative to healthy subjects¹⁶.

Given its critical role in human social behaviour and cognition¹⁷, the oxytocinergic (OT) system is a promising target for the treatment of social impairments in CHR-P subjects. OT has been proposed to be a key neural substrate that interacts with central dopamine systems¹⁸ and may counteract hyperdopaminergia seen in psychosis¹⁹. Previous studies have reported altered blood OT levels in schizophrenia patients^{20,21}, which predicted social cue recognition²¹. CHR-P individuals show significantly decreased OT receptor gene methylation, which was related to increased anhedonia-asociality²². OT administration improves mind-reading²³ and trust²⁴ in healthy volunteers. Notably, OT affects emotional rather than cognitive empathy in healthy people²⁵ and its effect on mind-reading depends on baseline social-emotional abilities²⁶. A single dose of OT also improves emotion recognition^{27–29}, higher-order social cognition (such as appreciation of indirect hints and recognition of social faux pas³⁰), as well as working memory³¹ in schizophrenia patients. However, evidence for OT effects on cognitive and emotional empathy in early psychosis is sparse. A first study showed that 24 IU for 6 weeks did not improve cognitive empathy in individuals with early schizophrenia-spectrum psychotic illness³².

This study investigated, for the first time, whether acute OT administration changed the ability to successfully infer on others people's beliefs (cognitive empathy) and social emotions (emotional empathy) in CHR-P males, and whether this change goes along with altered neural activation. Based on previous evidence in healthy people^{25,33} and CHR-P individuals¹⁶, we expected that OT would enhance successful recognition of others' facial emotions but not beliefs and that this improvement in successful social emotion inferences would be accompanied by increased neural activation in the emotional empathy network, in particular in the inferior frontal gyrus. As previously shown^{26,34}, we further predicted that OT effects would be moderated by baseline social-emotional abilities, with CHR-P individuals low in social-emotional abilities showing greater improvements after OT administration.

Materials and methods

Participants

The study received National Research Ethics Service approval (14/LO/1692) and all subjects gave written informed consent. The participants and OT administration have previously been described in our Arterial Spin Labelling (ASL)³⁵ and magnetic resonance spectroscopy (¹H-MRS)³⁶ studies. Sample size was estimated using G*Power 3 to detect neurochemical effects based on a previous ¹H-MRS study³⁷, which indicated that a sample size of 30 was sufficient to detect a medium within-subject effect size ($d_z = 0.53$), when $\alpha = 0.05$ and power = 80%. Thirty male, help-seeking CHR-P individuals aged 18–35 were recruited from two specialist early detection services—the OASIS³⁸ and Tower Hamlets Early Detection Service (THEDS), which belongs to the Pan-London Network for Psychosis-prevention (PNP)³⁹. CHR-P status was assessed using the Comprehensive Assessment of At-Risk Mental States (CAARMS) 12/2006 criteria⁴⁰. In brief, subjects met one or more of the following subgroup criteria: (a) attenuated psychotic symptoms, (b) brief limited intermittent psychotic symptoms (BLIPS, psychotic episode lasting <1 week, remitting without treatment^{41–43}), or (c) either schizotypal personality disorder or first-degree relative with psychosis⁴⁰, all coupled with functional decline. Individuals were excluded if there was a history of previous psychotic disorder (with the exception of BLIPS, some of whom may meet Acute and Transient Psychotic Disorder criteria⁴²) or manic episode, exposure to antipsychotics, neurological disorder or current substance-use disorder, estimated IQ < 70, acute intoxication on the day of scanning, and any contraindications to MRI or intranasal OT or placebo. History of Axis I disorder(s) was not an exclusion criterion due to the transdiagnostic nature of the CAARMS-based definition of the CHR-P state⁴⁴ and the high prevalence of such

diagnoses within these populations⁴⁵. We also collected information on medication history, alcohol (Alcohol Use Disorders Identification Test), tobacco and cannabis use, functioning (Global Functioning Role and Social scales⁴⁶) and transition status. One subject reported cannabis use prior to one scan and was therefore excluded from analysis. Furthermore, to test for potential moderation effects of baseline social-emotional abilities on OT effects^{26,47}, the Reading the Mind in the Eyes Test (RMET⁴⁸) was acquired prior to the first scan. RMET measures the ability to interpret subtle social-emotional cues from the eye region⁴⁸. It comprised 36 photographs depicting the eye region of Caucasian posers. Stimuli were presented on a black background in the center of a computer screen. In the four corners around the picture, one target label and three distractors were simultaneously shown. Participants were asked to select the correct mental state as fast as possible. The picture remained on the screen until participants clicked on a label with the mouse. A practice trial was conducted, and a glossary was provided in paper form. Performance was determined by calculating the percentage of correct answers. Demographic and clinical characteristics of the sample are presented in Table 1.

Study design

Using a randomised, double-blind, crossover design, 40 IU intranasal OT and placebo were administered in a counterbalanced fashion with a 1-week wash out period. During each challenge, subjects underwent an MRI scan which started at 11:30 h to minimise potential effects of diurnal variation in OT or vasopressin⁴⁹. Intranasal OT administration followed recommended guidelines and a protocol adopted by a previous study conducted at our institute⁴⁹. As done in our previous studies^{35,36}, participants self-administered one puff (4 IU) of intranasal OT or matched placebo every 30 s, alternating between nostrils, until 40 IU had been administered. See refs. ^{35,36} for more details.

Functional MRI paradigm

A modified version of the Sally-Anne task was used as previously applied in individuals with autism spectrum disorder after OT administration⁵⁰. Participants underwent two runs consecutively, each of which lasted approximately 7.5 min. Each run consisted of 10 different stories (Supplementary Fig. 1), while every story was presented three times in a row, one for each of the three conditions: 'control', 'belief inference (cognitive empathy)' and 'social emotion inference (emotional empathy)'. The identical set of 10 stories was presented during the first and second run. At the end of each story participants were required to answer 'yes-no'. Questions were presented in a pseudorandom fashion, so that 'yes' questions in the first

Table 1 Participant demographic and clinical characteristics.

Demographic	
Age years; mean (SD)	22.48 (4.68)
Age range. years	18–34
Sex; male/female	30/0
Ethnicity (White/Black/Asian/Mixed)	15/5/3/4
Handedness. right/left	23/4
Education. years; mean (SD)	13.33 (1.9)
Clinical	
CHR-P Subtype ^a (BLIPS/APS/GRD)	5/21/1
CAARMS attenuated positive symptoms ^b ; mean (SD)	11.85 (3.44)
Baseline anxiety score ^c ; mean (SD)	35.07 (9.83)
GF social score; mean (SD)	6.85 (1.46)
GF role score; mean (SD)	7.04 (1.63)
RMET ^d ; mean (SD), median	25.38 (4.99), 26
Substance Use	
Current antidepressant medication (yes/no) ^e	8/19
Current antipsychotic medication (yes/no)	0/27
Current benzodiazepine medication (yes/no)	0 / 27
Current smoker (yes/no)	15/12
Cigarettes/day; mean (SD)	9.33 (6.29)
Cannabis use ^f ; median (range)	2 (0–4)
Alcohol. AUDIT total; mean (SD)	6.74 (7.22)

AUDIT alcohol use disorders identification test, CHR-P clinical high risk for psychosis, GF global functioning (role and social) scale.

^aComprehensive Assessment of At-Risk Mental States (CAARMS) subgroup; BLIPS brief limited intermittent psychotic symptoms, APS attenuated psychotic symptoms, GRD genetic risk and deterioration.

^bSum of the global (severity) ratings for positive subscale items (P1-P4) of the CAARMS.

^cMean of pre-scan anxiety scores across conditions as measured by the State Trait Anxiety Inventory (STAI).

^dReading the Mind in the Eyes Test (RMET) score at the initial clinical assessment.

^eThree subjects received Sertraline (20 mg, 25 mg and 100 mg), one Escitalopram (20 mg), one Mirtazapine (30 mg), one Amitriptyline (10 mg), one Fluoxetine (40 mg) and one received 300 mg of unknown type.

^fCannabis use: 0 = never, 1 = experimental use (tried occasionally), 2 = occasional use (small quantities from time to time), 3 = moderate use (moderate quantities regularly/large amounts occasionally), 4 = severe use (frequently used large quantities, often to intoxication/debilitation).

run were modified to be 'no' questions in the second run, and vice versa. Before scanning, all participants were shown the cartoon stories in a mock scanner and required to answer questions as in the 'control' condition. In this manner, participants were trained to grasp the stories

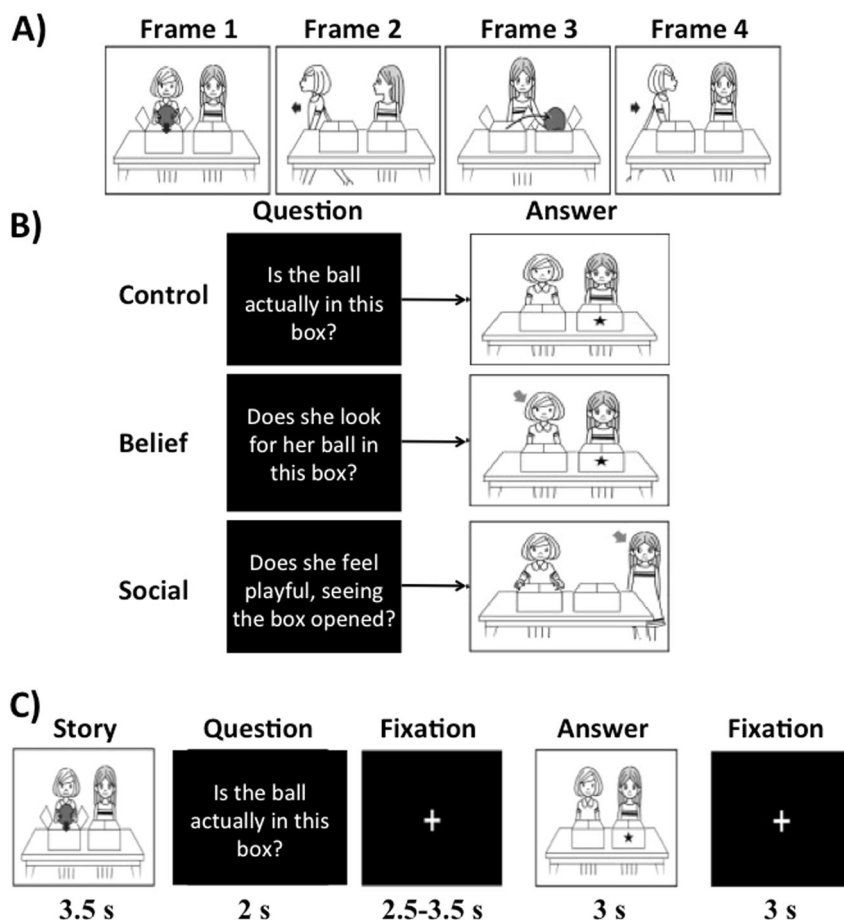


Fig. 1 Task design. **a** Each story consisted of four frames with two people. There are 10 different types of stories (see supplementary Fig. 1). **b** Each story was presented three times consecutively per each run. At the end of each story presentation, participants were asked to answer the following three types of questions that asked emotion of the character, belief of the character, and fact (control condition). These three questions appeared in a pseudorandom order, followed by an answer frame. **c** Trial timing. 3.5 s story presentation with four frames of a black and white comic. Then, a frame with a question written in white letters on the black screen was shown for 2 s. After 2.5–3.5 s white fixation cross on the black screen, another frame was presented to illustrate an arrow and a star to help to answer the question (3 s). At the end of one story, a 3-s fixation cross was shown. During the last frame and fixation cross, participants were instructed to answer the question with yes or no.

without experiencing the questions of the ‘Belief’ and ‘Social emotion’ conditions.

Let us take one story as an example. As summarized in Fig. 1a, four frames show a story with two persons with neutral faces. During the story, one person (Sally) places a ball in a left box (Frame 1) and leaves the room (Frame 2). Meanwhile, another person (Anne) moves the ball to a right box (Frame 3) and then Sally returns (Frame 4). At the end of the story, participants are asked the following three types of questions in a pseudorandom order (Fig. 1b): ‘Is the ball actually in this box?’ (indicating a left box with a star) for the control condition, ‘Does she look for her ball in this box?’ (indicating Sally with an arrow and a left box by a star) for the belief inference condition, and ‘Does she feel playful, seeing the box opened?’ for the social emotion inference condition. To answer the first question (control condition), participants are required to understand the

actual location of the ball. For the second question (belief inference), they are required to understand that Sally’s actions will be based on what she believes to be true, rather than the actual location. In the third question (social emotion inference), participants were required to answer the question about Anne’s emotional status after she completed the practical joke. To successfully infer on Anne’s emotional status, it is required not only to understand the story (control condition) but also that Anne believes that Sally falsely believes the ball is in the left box. In other words, successful social emotion inference (emotional empathy) depended on successful belief inference (cognitive empathy) but not vice versa. Task conditions and trial timing are summarized in Fig. 1c. Each trial consisted of 3.5 s story presentation with four frames (see Fig. 1a); 2 s question; 2.5–3.5 s fixation cross; 3 s of a frame with comic vignette that illustrates an arrow

and a star to help to answer the question; and 3 s fixation cross. Participants were required to answer this question during the last frame with comic and fixation cross by pressing a button to answer yes or no.

Behavioural analysis

We measured accuracy and reaction time to correct responses during the task. Paired t-test was used to test OT effects for each task condition.

Image acquisition and processing

All scans were conducted on a General Electric Discovery MR750 3 Tesla system (General Electric, Chicago, USA) using a 32-channel head coil. During the task, we acquired T2*-weighted echo-planar images with the following parameters: 41 axial slices of 3 mm thickness, 0.3 mm interslice gap, field of view $24 \times 24 \text{ cm}^2$ and flip angle 75° . The repetition time was 2 s and the echo time 30 ms. EPIs were analysed using an event-related design with SPM12 (www.fil.ion.ucl.ac.uk/spm). Pre-processing was performed for each subject and time point separately. In brief, slice-timing correction was first performed on each volume using the middle slice as the reference to adjust for time differences due to multislice image acquisition. The images were then realigned to the first image in the series. The anatomical T1 image was co-registered with the first functional image and then spatially normalized into the MNI space, generating normalization parameters, which were applied to all functional images. Functional images were smoothed with a Gaussian kernel of 8 mm full half-width maximum (FWHM). All images were checked for movement artefacts and subjects with more than 10% corrupted volumes (all scans with more than 3 mm deviation from the previous scan in any dimension) were excluded (one subject). Voxel-wise maximum likelihood parameter estimates were calculated during the first-level analysis using the general linear model. Our design matrix included an autoregressive AR(1) model of serial correlations and a high-pass filter with a cut-off of 128 s. The onsets of each event were convolved with the SPM synthetic haemodynamic response function. Each event-related regressor had an onset at the time of the answer frame and a duration that correspond to each response time (see Fig. 1c). First-level models were constructed for both treatments separately, including only the onset times for correct responses in the control, belief and social emotion condition during both runs. In line with previous studies using the same task^{16,50}, this approach allowed us to study whether OT administration changed neural activation while successfully inferring others' belief and social emotion relative to placebo. One subject had no correct responses during one of the four runs and was therefore excluded. The final sample thus consisted of 27 subjects.

Two contrast images were generated per participant: 'belief > control' (cognitive empathy) and 'social emotion > control' (emotional empathy). One-sample t tests were conducted to test for effects of condition (cognitive and emotional empathy) after placebo administration and paired t-tests were conducted to test for treatment effects in the two interrelated contrasts of interest separately as previously done⁵⁰. Significance was assessed at a cluster-level threshold of $p < 0.05$ family-wise error (FWE) corrected across the whole brain with an uncorrected cluster-forming threshold of $p < 0.001$ ^{51,52} with an extent threshold of 20 voxels.

Impact of baseline social-emotional abilities

The relationship between baseline social-emotional ability (RMET performance) and significant brain effect (left inferior frontal gyrus) after OT administration was tested using Spearman correlation at a significance level of $p < 0.05$. Parameter estimates were extracted from the whole left inferior frontal gyrus cluster (300 voxels) showing a significant effect between OT and placebo during inferring others' social emotions ('social emotion > control' contrast). Nonparametric correlation was performed due to the fact that parameter estimates of left inferior frontal gyrus activation were not normally distributed as indicated by a significant Kolmogorov–Smirnov test ($p = 0.033$). We further used a linear regression to test whether the relationship between brain activation in left inferior frontal gyrus and task accuracy after OT administration was moderated by RMET performance. Task accuracy was entered as dependent variable and the interaction RMET x left inferior frontal gyrus activation as independent variable. To perform a parametric moderator analysis, parameter estimates in the left inferior frontal gyrus after OT administration were first log transformed.

Results

Behavioural task performance

OT did not modulate accuracy for the control ($T = 0.332$, $p = 0.743$), belief ($T = 0.618$, $p = 0.542$) or social ($T = 0.775$, $p = 0.445$) condition (Fig. 2a). OT also did not influence reaction times for correct responses during the control ($T = 0.024$, $p = 0.981$), belief ($T = 0.801$, $p = 0.430$) or social ($T = 1.11$, $p = 0.277$) condition (Fig. 2b). Correlations between reaction time and accuracy within and between the different task conditions are presented in Supplementary Table 1.

Brain activation

Effect of conditions

Inferring others' beliefs (belief > control) evoked significant activation in left precuneus, angular gyrus, inferior frontal and parietal gyrus and bilateral middle frontal gyrus (Supplementary Table 2, Supplementary Fig. 2A). Inferring

others' social emotions (social emotion > control) evoked significant activation in left supplementary motor area, superior frontal gyrus, inferior temporal gyrus, angular gyrus, precuneus, right cerebellum, and bilateral inferior and middle frontal gyrus, middle temporal gyrus and caudate (Supplementary Table 3, Supplementary Fig. 2B).

Effect of OT

OT did not modulate brain activation during inferring others' beliefs relative to placebo (Supplementary Table 4).

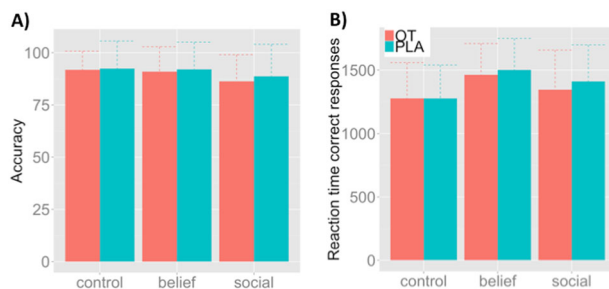


Fig. 2 Behavioral task performance. Accuracies and reaction times in response to correct responses for both treatments during the task.

However, during inferring others' social emotions, OT significantly reduced activation in the left and right inferior frontal gyrus (Table 2, Fig. 3a). No significantly increased activation was found after OT relative to the placebo administration during inferring others' social emotions (Supplementary Table 5). Notably, the differences in left ($T = 0.156$, $p = 0.879$) and right ($T = 0.873$, $p = 0.419$) inferior frontal gyrus activation after OT relative to placebo did not differ between those individuals who received antidepressants ($n = 8$) or not.

Moderator effect of baseline social-emotional abilities on OT effects

We further tested whether left inferior frontal gyrus activation after OT administration during inferring others' social emotions (social emotion > control) was related to baseline RMET scores. There was a significant positive correlation between baseline RMET scores and left inferior frontal gyrus activation after OT administration ($r = 0.388$, $p = 0.046$) (Fig. 3b). We further found that RMET score also moderated the relationship between left frontal gyrus activation during inferring others' social emotion and task accuracy after OT administration, as indicated by a significant interaction $\text{RMET} \times \text{left}$

Table 2 Treatments effects (placebo > OT) during inferring others' social emotion ('social emotion > control').

Region, hemisphere	pFWE, cluster-level	Cluster size pFWE	T value	Z value	MNI coordinates (x/y/z)		
Inferior Frontal Gyrus, L	0.039	300	6.05	4.63	-48	18	-4
Inferior Frontal Gyrus, L			5.26	4.22	-30	36	-8
Inferior Frontal Gyrus, L			4.69	3.89	-56	16	2
Inferior Frontal Gyrus, R	0.042	294	5.52	4.36	48	26	-4
Inferior Frontal Gyrus, R			4.99	4.07	32	34	-8
Parahippocampus, R	0.563	71	4.68	3.88	30	-10	-28
Hippocampus, R			4.00	3.45	20	-10	-16
Middle temporal gyrus, R	0.099	216	4.65	3.87	58	-42	-4
Middle temporal gyrus, R			4.30	3.65	66	-36	-2
Inferior temporal gyrus, R			3.68	3.23	64	-44	-10
Postcentral gyrus, R	0.200	157	4.16	3.56	42	-22	34
Postcentral gyrus, R			3.93	3.40	36	-26	42
Postcentral gyrus, R			3.75	3.28	42	-28	58
Middle temporal gyrus, L	0.742	45	4.14	3.54	-60	-38	6
Calcarine, L	0.778	40	4.09	3.51	-26	-70	8
Calcarine, L			4.00	3.45	-24	-62	12
Putamen, L	0.854	29	4.08	3.50	-34	-10	-4
Parahippocampus, R	0.841	31	4.07	3.50	12	-22	-12
Cerebellum, L	0.899	22	3.95	3.42	-8	-42	-22

FWE family-wise error.

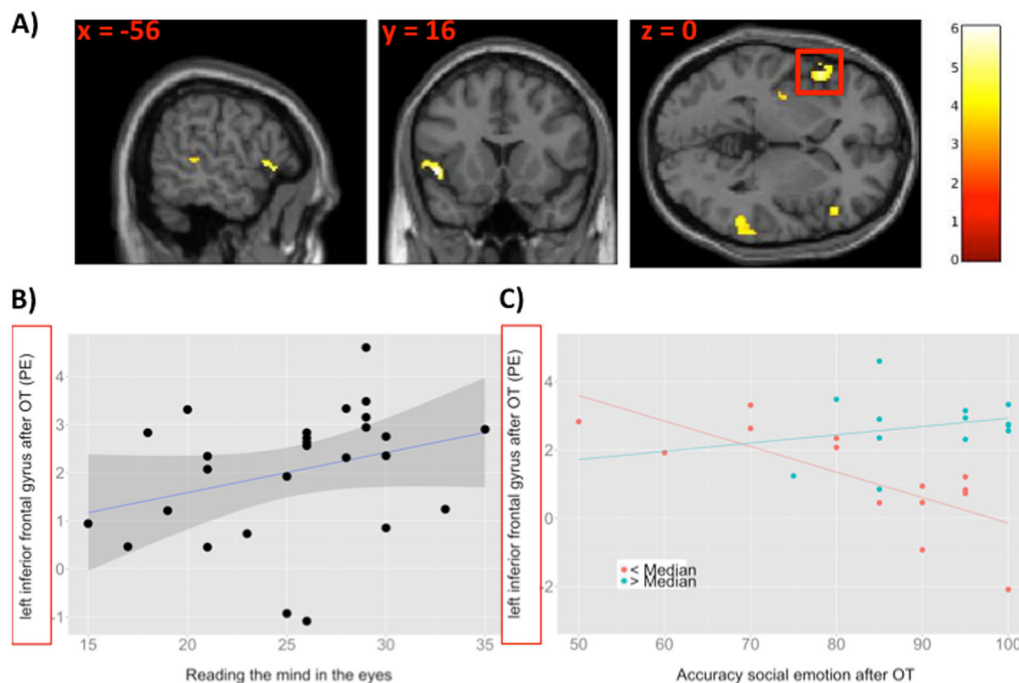


Fig. 3 Imaging results. **a** Significant reduced activation in the left and right inferior frontal gyrus (IFG) during inferring others' social emotion (social emotion > control) after OT compared with the placebo administration. Images are displayed at a cluster-forming threshold of $p < 0.001$ uncorrected, with an extent threshold of 20 voxels. Colour bars indicate t values. **b** Significant correlation between left IFG activation after OT administration (i.e. parameter estimate, PE) during inferring others' social emotion and baseline RMET performance ($r = -0.388$, $p = 0.046$). **c** Moderator effect of baseline RMET performance on the relationship between left IFG activation after OT administration (i.e. parameter estimate, PE) and task accuracy during inferring others' social emotions after OT administration.

inferior frontal gyrus ($\beta = -3.53$, $p = 0.020$). The moderator effect was also evident after median (median = 26) splitting the sample into high ($n = 13$) and low ($n = 14$) RMET performance ($\beta = -20.05$, $p = 0.023$). While task accuracy increased with decreasing activation in the left inferior frontal gyrus in CHR-P individual with low RMET scores ($r = -0.578$, $p = 0.030$), there was no significant relationship between task accuracy and left inferior frontal gyrus activation in CHR-P individual with high RMET scores ($r = 0.088$, $p = 0.775$) (Fig. 3c).

Discussion

To the best of our knowledge, this is the first fMRI study to assess how acute OT administration modulated brain activation during inferring others' beliefs and social emotions in CHR-P individuals. The first main finding is that OT did not affect brain responses during belief inference (cognitive empathy) but reduced activation in the bilateral inferior frontal gyrus during social emotion inference (emotional empathy). The second main finding is that neural activation in the left inferior frontal gyrus during social emotion inference after OT administration was modulated by baseline social-emotional abilities, which also moderated the relationship between brain activation and task performance. These findings can

inform subsequent experimental therapeutics in this patient population.

The first finding of this study is that while OT did not modulate neural responses during belief inference it did reduce neural activation in the bilateral inferior frontal gyrus during social emotion inference. OT has been shown to enhance emotional but not cognitive empathy in healthy participants^{25,33}, an effect that could be replicated across culture and sex⁵³. In early psychosis patients, OT treatment did not enhance cognitive empathy but improved the ability to recognize emotions in schizophrenia patients²⁷. We add to this line of evidence by showing that OT significantly decreased activation in the bilateral inferior frontal gyrus during emotional but not cognitive empathy in CHR-P subjects. The inferior frontal gyrus has been increasingly implicated in emotion recognition tasks such as identification of emotional intonation⁵⁴, judgment of facial expressions⁵⁵ and is an essential part of the neural mirror system, which is involved in a variety of important social behaviours, from imitation to emotional empathy⁵⁶. Good imitation facilitates recognizing emotions in other people and thus emotional empathy⁵⁷. Previous seminal work demonstrated that patients with inferior frontal gyrus lesions displayed extremely impaired emotional but not cognitive

empathy¹². More importantly, a previous study that used the same fMRI task in CHR-P found reduced activation in the bilateral inferior frontal gyrus when inferring others emotions but not beliefs relative to healthy controls¹⁶. The inferior frontal gyrus is a core target of the neuro-functional effects of OT⁵⁸. OT may promote assimilation of novel emotional experiences into internal models⁵⁹, which is supported by parts of the left inferior frontal gyrus⁶⁰. Emotion perception is impaired in patients with schizophrenia¹, CHR-P subjects⁶¹, offspring of parents with schizophrenia⁶² and is related to poor functional outcomes^{1,61}. As a potential compensatory mechanism for this deficit, stronger inferior frontal gyrus activation during emotional perspective taking has been observed in CHR-P subjects compared with healthy controls^{14,15}. Given that task performance during emotional empathy did not differ between OT and placebo in the current study, decreased inferior frontal gyrus activation after OT administration might indicate enhanced neural efficiency. Such an interpretation corresponds with a recent study showing that OT enhances neural efficiency of social perception as expressed by reduced event-related potential latencies⁶³. Taken together, we might speculate that after receiving placebo, CHR-P subjects compensated their deficits in emotional perspective-taking by increasing activation in the inferior frontal gyrus compared with healthy individuals, as previously shown^{14,15}, whereas OT may enhance neural efficiency in the inferior frontal gyrus by normalizing activation to the level of healthy persons.

The second main finding was of a positive relationship between baseline social-emotional abilities and left inferior frontal gyrus activation during social emotion inference (emotional empathy) after OT administration. Moreover, baseline social-emotional abilities as expressed by RMET performance moderated the relationship between OT-induced task performance and inferior frontal gyrus activation during emotional empathy. In particular, whereas inferior frontal gyrus activation decreased with increasing task performance in CHR-P subjects with low baseline social-emotional abilities, no such relationship was found in CHR-P subjects with high baseline social-emotional abilities. These findings suggest that OT-induced improvement in neural efficiency as expressed by decreased activation in the inferior frontal gyrus only took place in those CHR-P subjects with low baseline social-emotional abilities. In other words, CHR-P subjects with low social-emotional abilities needed less activation in the inferior frontal gyrus to achieve comparable task performance as after placebo administration. This finding resonates with previous reports demonstrating that OT selectively improved mind-reading as assessed with the RMET in those individuals with low emotional empathy²⁶, high in alexithymia or high in maternal love withdrawal^{34,64,65}. Although RMET

performance has mostly been associated with cognitive empathy²⁶, a recent study demonstrated that the RMET measures emotion recognition rather than theory of mind (i.e. cognitive empathy) ability⁶⁶. Taken together, there is emerging evidence that OT influences emotional rather than cognitive processing and that its benefit depends on emotional empathy capacity.

There are several possible clinical implications. The dearth of preventive treatments that can effectively impact clinical outcomes—in particular social functioning deficits—can be partially explained by lack of clear aetiopathological mechanisms underlying the therapeutic effects of preventive agents. This study advances knowledge in this area by providing the first disease target-engagement evidence in CHR-P individuals. These neurophysiological results can inform the development of subsequent randomised controlled trials investigating OT's effects on CHR-P symptoms and on clinical outcomes. Identifying novel therapeutic target for outcomes other than psychosis onset is a mainstream of future research in this area, considering that most CHR-P individuals who will not transition to psychosis will still display social functioning deficits at follow-up⁶⁷.

The present study has limitations. No healthy control group was included in the current study. However, we have used a fMRI task which was already tested in CHR-P vs. healthy controls¹⁶, demonstrating significant alterations in key brain areas that are also implicated in this study. Due to sex differences in brain responses to OT during social interaction⁶⁸, only male subjects were included. Another limitation is that this study did not collect extensive data on negative symptoms or neuro-cognition. Dose-response assessments are further required to test whether lower dosing might be sufficient for optimal target engagement, i.e. improving neural efficiency in the inferior frontal gyrus. While this study demonstrated that acute OT administration modulates key brain regions during inferring others' social emotions, OT effects on functional outcomes in CHR-P subjects need to be tested in future longer-term clinical trials. Furthermore, in terms of the neurophysiological mechanisms by which OT has its effects, we previously reported that OT modulates cerebral (hippocampal) perfusion in CHR-P patients³⁵, but did not appear to modulate regional concentrations of neurochemical metabolites³⁶. The mechanisms by which OT increases neural efficiency in CHR-P individuals therefore warrants further research. A final limitation is that because of the small sample size we have been unable to stratify the heterogeneous CHR-P group across its three main subgroups⁶⁹.

In conclusion, the present study provides the first evidence that acute OT administration modulates brain regions while inferring others' social emotions in CHR-P

subjects. Abnormal emotion perception persists over the course of the illness⁷⁰ and is predictive for poor functional outcomes in CHR-P subjects⁶¹. This study may thus provide neural targets to develop novel treatments for socio-emotional deficits in CHR-P subjects with the aim to improve functional outcomes.

Acknowledgements

This work was supported by the National Institute for Health Research (NIHR) Biomedical Research Centre (BRC) at South London and Maudsley NHS Foundation Trust and King's College London (P.F.P., P.M.); by a Brain & Behaviour Research Foundation NARSAD Award (grant number 22593 to P.F.P.); and by the Department of Psychosis Studies, Institute of Psychiatry, Psychology & Neuroscience, King's College London. D.O. is supported by the UK Medical Research Council (MR/N013700/1) and is a King's College London member of the MRC Doctoral Training Partnership in Biomedical Sciences.

Author details

¹Department of Psychiatry (UPK), University of Basel, Basel, Switzerland. ²Early Psychosis: Interventions and Clinical-detection (EPIC) lab, Department of Psychosis Studies, Institute of Psychiatry, Psychology & Neuroscience, King's College London, London, UK. ³Department of Neuroimaging, Institute of Psychiatry, Psychology & Neuroscience, King's College London, London, UK. ⁴Department of Psychosis Studies, Institute of Psychiatry, Psychology & Neuroscience, King's College London, London, UK. ⁵National Institute for Health Research (NIHR) Biomedical Research Centre (BRC), South London and Maudsley NHS Foundation Trust, London, UK. ⁶Department of Brain and Behavioural Sciences, University of Pavia, Pavia, Italy. ⁷Department of Psychiatry, Hamamatsu University School of Medicine, Shizuoka, Japan. ⁸Medical Institute of Developmental Disabilities Research, Showa University, Tokyo, Japan. ⁹Department of Psychosocial Medicine, National Center for Child Health and Development, Tokyo, Japan. ¹⁰Tower Hamlets Early Detection Service (THEDS), East London NHS Foundation Trust, London, UK. ¹¹Department of Psychology, University of Roehampton, London, UK. ¹²Institute of Pharmaceutical Science, King's College London, London, UK. ¹³Department of Psychiatry and Psychotherapy, University of Lübeck, Lübeck, Germany. ¹⁴Outreach and Support in South London (OASIS) Service, South London and Maudsley NHS Foundation Trust, London, UK

Conflict of interest

The authors declare that they have no conflict of interest.

Publisher's note

Springer Nature remains neutral with regard to jurisdictional claims in published maps and institutional affiliations.

Supplementary Information accompanies this paper at (<https://doi.org/10.1038/s41398-020-00885-4>).

Received: 23 January 2020 Revised: 19 May 2020 Accepted: 26 May 2020
Published online: 22 June 2020

References

- Couture, S. M., Penn, D. L. & Roberts, D. L. The functional significance of social cognition in schizophrenia: a review. *Schizophr. Bull.* **32**(Suppl. 1), S44–63 (2006).
- Fusar-Poli, P. et al. Social dysfunction predicts two years clinical outcome in people at ultra high risk for psychosis. *J. Psychiatr. Res.* **44**, 294–301 (2010).
- Fusar-Poli, P. et al. Cognitive functioning in prodromal psychosis: a meta-analysis of cognitive functioning in prodromal psychosis. *Arch. Gen. Psychiatry* **69**, 562–571 (2012).
- Lincoln, S. H., Norkett, E. M., Frost, K. H., Gonzalez-Heydrich, J. & D'Angelo, E. J. A developmental perspective on social-cognition difficulties in youth at clinical high risk for psychosis. *Harv. Rev. Psychiatry* **25**, 4–14 (2017).
- Davies, C. et al. Efficacy and acceptability of interventions for attenuated positive psychotic symptoms in individuals at clinical high risk of psychosis: a network meta-analysis. *Front Psychiatry* **9**, 187 (2018).
- Davies, C. et al. Lack of evidence to favor specific preventive interventions in psychosis: a network meta-analysis. *World Psychiatry* **17**, 196–209 (2018).
- Amodio, D. M. & Frith, C. D. Meeting of minds: the medial frontal cortex and social cognition. *Nat. Rev. Neurosci.* **7**, 268–277 (2006).
- Langdon, R., Connors, M. H., Still, M., Ward, P. B. & Catts, S. Theory of mind and neurocognition in early psychosis: a quasi-experimental study. *BMC Psychiatry* **14**, 316 (2014).
- Ohmuro, N. et al. Deficits of cognitive theory of mind and its relationship with functioning in individuals with an at-risk mental state and first-episode psychosis. *Psychiatry Res.* **243**, 318–325 (2016).
- Hur, J. W. et al. General intellectual functioning as a buffer against theory-of-mind deficits in individuals at ultra-high risk for psychosis. *Schizophr. Res.* **149**, 83–87 (2013).
- Healey, M. L. & Grossman, M. Cognitive and affective perspective-taking: evidence for shared and dissociable anatomical substrates. *Front. Neurol.* **9**, 491 (2018).
- Shamay-Tsoory, S. G., Aharon-Peretz, J. & Perry, D. Two systems for empathy: a double dissociation between emotional and cognitive empathy in inferior frontal gyrus versus ventromedial prefrontal lesions. *Brain* **132**(Pt 3), 617–627 (2009).
- Fan, Y., Duncan, N. W., de Greck, M. & Northoff, G. Is there a core neural network in empathy? An fMRI based quantitative meta-analysis. *Neurosci. Biobehav. Rev.* **35**, 903–911 (2011).
- Brüne, M. et al. An fMRI study of “theory of mind” in at-risk states of psychosis: comparison with manifest schizophrenia and healthy controls. *Neuroimage* **55**, 329–337 (2011).
- Derntl, B. et al. Empathy in individuals clinically at risk for psychosis: brain and behaviour. *Br. J. Psychiatry* **207**, 407–413 (2015).
- Takano, Y. et al. Neural basis for inferring false beliefs and social emotions in others among individuals with schizophrenia and those at ultra-high risk for psychosis. *Psychiatry Res. Neuroimaging* **259**, 34–41 (2017).
- Meyer-Lindenberg, A., Domes, G., Kirsch, P. & Heinrichs, M. Oxytocin and vasopressin in the human brain: social neuropeptides for translational medicine. *Nat. Rev. Neurosci.* **12**, 524–538 (2011).
- Baskerville, T. A. & Douglas, A. J. Dopamine and oxytocin interactions underlying behaviors: potential contributions to behavioral disorders. *CNS Neurosci. Ther.* **16**, e92–e123 (2010).
- Feifel, D., Shilling, P. D. & MacDonald, K. A review of oxytocin's effects on the positive, negative, and cognitive domains of schizophrenia. *Biol. Psychiatry* **79**, 222–233 (2016).
- Jobst, A. et al. Oxytocin and vasopressin levels are decreased in the plasma of male schizophrenia patients. *Acta Neuropsychiatr.* **26**, 347–355 (2014).
- Strauss, G. P. et al. Plasma oxytocin levels predict social cue recognition in individuals with schizophrenia. *Schizophr. Res.* **162**, 47–51 (2015).
- Bang, M. et al. Reduced DNA methylation of the oxytocin receptor gene is associated with anhedonia-asociality in women with recent-onset schizophrenia and ultra-high risk for psychosis. *Schizophr. Bull.* **45**, 1279–1290 (2019).
- Domes, G., Heinrichs, M., Michel, A., Berger, C. & Herpertz, S. C. Oxytocin improves “mind-reading” in humans. *Biol. Psychiatry* **61**, 731–733 (2007).
- Kosfeld, M., Heinrichs, M., Zak, P. J., Fischbacher, U. & Fehr, E. Oxytocin increases trust in humans. *Nature* **435**, 673–676 (2005).
- Hurlmann, R. et al. Oxytocin enhances amygdala-dependent, socially reinforced learning and emotional empathy in humans. *J. Neurosci.* **30**, 4999–5007 (2010).
- Radke, S. & de Bruijn, E. R. Does oxytocin affect mind-reading? A replication study. *Psychoneuroendocrinology* **60**, 75–81 (2015).
- Averbeck, B. B., Bobin, T., Evans, S. & Shergill, S. S. Emotion recognition and oxytocin in patients with schizophrenia. *Psychol. Med.* **42**, 259–266 (2012).
- Fischer-Shofty, M. et al. Improving social perception in schizophrenia: the role of oxytocin. *Schizophr. Res.* **146**, 357–362 (2013).
- Woolley, J. D. et al. Oxytocin administration enhances controlled social cognition in patients with schizophrenia. *Psychoneuroendocrinology* **47**, 116–125 (2014).
- Guastella, A. J. et al. A single dose of oxytocin nasal spray improves higher-order social cognition in schizophrenia. *Schizophr. Res.* **168**, 628–633 (2015).
- Michalopolou, P. G. et al. The effects of a single dose of oxytocin on working memory in schizophrenia. *Schizophr. Res.* **162**, 62–63 (2015).
- Cacciotti-Sajja, C. et al. A double-blind randomized controlled trial of oxytocin nasal spray and social cognition training for young people with early psychosis. *Schizophr. Bull.* **41**, 483–493 (2015).

33. Shamay-Tsoory, S. G. The neural bases for empathy. *Neuroscientist* **17**, 18–24 (2011).
34. Luminet, O., Grynberg, D., Ruzette, N. & Mikolajczak, M. Personality-dependent effects of oxytocin: greater social benefits for high alexithymia scorers. *Biol. Psychol.* **87**, 401–406 (2011).
35. Davies, C. et al. Oxytocin modulates hippocampal perfusion in people at clinical high risk for psychosis. *Neuropsychopharmacology* **44**, 1300–1309 (2019).
36. Davies, C. et al. Neurochemical effects of oxytocin in people at clinical high risk for psychosis. *Eur. Neuropsychopharmacol.* **29**, 601–615 (2019).
37. Stone, J. M. et al. Glutamate dysfunction in people with prodromal symptoms of psychosis: relationship to gray matter volume. *Biol. Psychiatry* **66**, 533–539 (2009).
38. Fusar-Poli, P., Byrne, M., Badger, S., Valmaggia, L. R. & McGuire, P. K. Outreach and support in south London (OASIS), 2001–2011: ten years of early diagnosis and treatment for young individuals at high clinical risk for psychosis. *Eur. Psychiatry* **28**, 315–326 (2013).
39. Fusar-Poli, P. et al. Pan-London network for psychosis-prevention (PNP). *Front. Psychiatry* **10**, 707 (2019).
40. Yung, A. R. et al. Mapping the onset of psychosis: the comprehensive assessment of at-risk mental states. *Aust. N. Z. J. Psychiatry* **39**, 964–971 (2005).
41. Fusar-Poli, P. et al. Unmet needs for treatment in 102 individuals with brief and limited intermittent psychotic symptoms (BLIPS): implications for current clinical recommendations. *Epidemiol. Psychiatr. Sci.* **29**, e67, 1–9 (2019).
42. Fusar-Poli, P. et al. Diagnostic and prognostic significance of brief limited intermittent psychotic symptoms (BLIPS) in individuals at ultra high risk. *Schizophr. Bull.* **43**, 48–56 (2017).
43. Fusar-Poli, P. et al. Prognosis of brief psychotic episodes: a meta-analysis. *JAMA Psychiatry* **73**, 211–220 (2016).
44. Fusar-Poli, P. et al. towards a standard psychometric diagnostic interview for subjects at ultra high risk of psychosis: CAARMS versus SIPS. *Psychiatry J.* **2016**, 7146341 (2016).
45. Fusar-Poli, P., Nelson, B., Valmaggia, L., Yung, A. R. & McGuire, P. K. Comorbid depressive and anxiety disorders in 509 individuals with an at-risk mental state: impact on psychopathology and transition to psychosis. *Schizophr. Bull.* **40**, 120–131 (2014).
46. Comblatt, B. A. et al. Preliminary findings for two new measures of social and role functioning in the prodromal phase of schizophrenia. *Schizophr. Bull.* **33**, 688–702 (2007).
47. Bartz, J. A., Zaki, J., Bolger, N. & Ochsner, K. N. Social effects of oxytocin in humans: context and person matter. *Trends Cogn. Sci.* **15**, 301–309 (2011).
48. Baron-Cohen, S., Wheelwright, S., Hill, J., Raste, Y. & Plumb, I. The “Reading the Mind in the Eyes” Test revised version: a study with normal adults, and adults with Asperger syndrome or high-functioning autism. *J. Child Psychol. Psychiatry* **42**, 241–251 (2001).
49. Paloyelis, Y. et al. A spatiotemporal profile of in vivo cerebral blood flow changes following intranasal oxytocin in humans. *Biol. Psychiatry* **79**, 693–705 (2016).
50. Aoki, Y. et al. Oxytocin improves behavioural and neural deficits in inferring others’ social emotions in autism. *Brain* **137**(Pt 11), 3073–3086 (2014).
51. Petersson, K. M., Nichols, T. E., Poline, J. B. & Holmes, A. P. Statistical limitations in functional neuroimaging. II. Signal detection and statistical inference. *Philos. Trans. R. Soc. Lond. B: Biol. Sci.* **354**, 1261–1281 (1999).
52. Woo, C. W., Krishnan, A. & Wager, T. D. Cluster-extent based thresholding in fMRI analyses: pitfalls and recommendations. *Neuroimage* **91**, 412–419 (2014).
53. Geng, Y. et al. Oxytocin enhancement of emotional empathy: generalization across cultures and effects on amygdala activity. *Front. Neurosci.* **12**, 512 (2018).
54. Wildgruber, D. et al. Identification of emotional intonation evaluated by fMRI. *Neuroimage* **24**, 1233–1241 (2005).
55. Kesler-West, M. L. et al. Neural substrates of facial emotion processing using fMRI. *Brain Res. Cogn. Brain Res.* **11**, 213–226 (2001).
56. Iacoboni, M. & Dapretto, M. The mirror neuron system and the consequences of its dysfunction. *Nat. Rev. Neurosci.* **7**, 942–951 (2006).
57. Iacoboni, M. Imitation, empathy, and mirror neurons. *Annu. Rev. Psychol.* **60**, 653–670 (2009).
58. Wigton, R. et al. Neurophysiological effects of acute oxytocin administration: systematic review and meta-analysis of placebo-controlled imaging studies. *J. Psychiatry Neurosci.* **40**, E1–E22 (2015).
59. Tops, M. et al. The role of oxytocin in familiarization-habituation responses to social novelty. *Front. Psychol.* **4**, 761 (2013).
60. Tops, M., Koole, S. L., IJzerman, H. & Buisman-Pijlman, F. T. Why social attachment and oxytocin protect against addiction and stress: Insights from the dynamics between ventral and dorsal corticostriatal systems. *Pharm. Biochem. Behav.* **119**, 39–48 (2014).
61. Modinos, G. et al. Association of adverse outcomes with emotion processing and its neural substrate in individuals at clinical high risk for psychosis. *JAMA Psychiatry* **77**, 190–200 (2019).
62. Horton, L. E., Bridgwater, M. A. & Haas, G. L. Emotion recognition and social skills in child and adolescent offspring of parents with schizophrenia. *Cogn. Neuropsychiatry* **22**, 175–185 (2017).
63. Tillman, R. et al. Oxytocin enhances the neural efficiency of social perception. *Front. Hum. Neurosci.* **13**, 71 (2019).
64. Riem, M. M., Bakermans-Kranenburg, M. J., Voorthuis, A. & van IJzendoorn, M. H. Oxytocin effects on mind-reading are moderated by experiences of maternal love withdrawal: an fMRI study. *Prog. Neuropsychopharmacol. Biol. Psychiatry* **51**, 105–112 (2014).
65. Feeser, M. et al. Oxytocin improves mentalizing—pronounced effects for individuals with attenuated ability to empathize. *Psychoneuroendocrinology* **53**, 223–232 (2015).
66. Oakley, B. F. M., Brewer, R., Bird, G. & Catmur, C. Theory of mind is not theory of emotion: a cautionary note on the Reading the Mind in the Eyes Test. *J. Abnorm. Psychol.* **125**, 818–823 (2016).
67. Rutigliano, G. et al. Persistence or recurrence of non-psychotic comorbid mental disorders associated with 6-year poor functional outcomes in patients at ultra high risk for psychosis. *J. Affect Disord.* **203**, 101–110 (2016).
68. Rilling, J. K. et al. Sex differences in the neural and behavioral response to intranasal oxytocin and vasopressin during human social interaction. *Psychoneuroendocrinology* **39**, 237–248 (2014).
69. Fusar-Poli, P. et al. Heterogeneity of psychosis risk within individuals at clinical high risk: a meta-analytical stratification. *JAMA Psychiatry* **73**, 113–120 (2016).
70. Comparelli, A. et al. Emotion recognition impairment is present early and is stable throughout the course of schizophrenia. *Schizophr. Res.* **143**, 65–69 (2013).