



King's Research Portal

DOI:

[10.1038/s41598-022-14016-0](https://doi.org/10.1038/s41598-022-14016-0)

Document Version

Publisher's PDF, also known as Version of record

[Link to publication record in King's Research Portal](#)

Citation for published version (APA):

COVID-19 Genomics U. K. (COG-UK) Consortium (2022). COVID-19 due to the B.1.617.2 (Delta) variant compared to B.1.1.7 (Alpha) variant of SARS-CoV-2: a prospective observational cohort study. *Scientific Reports*, 12(1), 10904. Article 10904. <https://doi.org/10.1038/s41598-022-14016-0>

Citing this paper

Please note that where the full-text provided on King's Research Portal is the Author Accepted Manuscript or Post-Print version this may differ from the final Published version. If citing, it is advised that you check and use the publisher's definitive version for pagination, volume/issue, and date of publication details. And where the final published version is provided on the Research Portal, if citing you are again advised to check the publisher's website for any subsequent corrections.

General rights

Copyright and moral rights for the publications made accessible in the Research Portal are retained by the authors and/or other copyright owners and it is a condition of accessing publications that users recognize and abide by the legal requirements associated with these rights.

- Users may download and print one copy of any publication from the Research Portal for the purpose of private study or research.
- You may not further distribute the material or use it for any profit-making activity or commercial gain
- You may freely distribute the URL identifying the publication in the Research Portal

Take down policy

If you believe that this document breaches copyright please contact librarypure@kcl.ac.uk providing details, and we will remove access to the work immediately and investigate your claim.



OPEN

COVID-19 due to the B.1.617.2 (Delta) variant compared to B.1.1.7 (Alpha) variant of SARS-CoV-2: a prospective observational cohort study

Kerstin Kläser¹, Erika Molteni¹, Mark Graham¹, Liane S. Canas¹, Marc F. Österdahl^{2,3}, Michela Antonelli¹, Liyuan Chen¹, Jie Deng¹, Benjamin Murray¹, Eric Kerfoot¹, Jonathan Wolf⁴, Anna May⁴, Ben Fox⁴, Joan Capdevila⁴, The COVID-19 Genomics U. K. (COG-UK) Consortium^{*}, Marc Modat¹, Alexander Hammers^{1,5}, Tim D. Spector², Claire J. Steves^{2,3}, Carole H. Sudre^{1,6,7}, Sebastien Ourselin^{1,117} & Emma L. Duncan^{2,8,117}✉

The Delta (B.1.617.2) variant was the predominant UK circulating SARS-CoV-2 strain between May and December 2021. How Delta infection compares with previous variants is unknown. This prospective observational cohort study assessed symptomatic adults participating in the app-based COVID Symptom Study who tested positive for SARS-CoV-2 from May 26 to July 1, 2021 (Delta overwhelmingly the predominant circulating UK variant), compared (1:1, age- and sex-matched) with individuals presenting from December 28, 2020 to May 6, 2021 (Alpha (B.1.1.7) the predominant variant). We assessed illness (symptoms, duration, presentation to hospital) during Alpha- and Delta-predominant timeframes; and transmission, reinfection, and vaccine effectiveness during the Delta-predominant period. 3581 individuals (aged 18 to 100 years) from each timeframe were assessed. The seven most frequent symptoms were common to both variants. Within the first 28 days of illness, some symptoms were more common with Delta versus Alpha infection (including fever, sore throat, and headache) and some vice versa (dyspnoea). Symptom burden in the first week was higher with Delta versus Alpha infection; however, the odds of any given symptom lasting ≥ 7 days was either lower or unchanged. Illness duration ≥ 28 days was lower with Delta versus Alpha infection, though unchanged in unvaccinated individuals. Hospitalisation for COVID-19 was unchanged. The Delta variant appeared more (1.49) transmissible than Alpha. Re-infections were low in all UK regions. Vaccination markedly reduced the risk of Delta infection (by 69–84%). We conclude that COVID-19 from Delta or Alpha infections is similar. The Delta variant is more transmissible than Alpha; however, current vaccines showed good efficacy against disease. This research framework can be useful for future comparisons with new emerging variants.

¹School of Biomedical Engineering and Imaging Sciences, King's College London, London, UK. ²Department of Twin Research and Genetic Epidemiology, School of Life Course Sciences, Faculty of Life Sciences and Medicine, King's College London, St Thomas' Hospital Campus, 3rd Floor South Wing Block D, Westminster Bridge Road, London SE1 7EH, UK. ³Department of Aging and Health, Guy's and St Thomas' NHS Foundation Trust, London, UK. ⁴ZOE Limited, London, UK. ⁵King's College London & Guy's and St Thomas' PET Centre, London, UK. ⁶MRC Unit for Lifelong Health and Ageing, Department of Population Health Sciences, University College London, London, UK. ⁷Centre for Medical Image Computing, Department of Computer Science, University College London, London, UK. ⁸Department of Endocrinology, Guy's and St Thomas' NHS Foundation Trust, London, UK. ¹¹⁷These authors contributed equally: Sebastien Ourselin and Emma L. Duncan. *A list of authors and their affiliations appears at the end of the paper. ✉email: emma.duncan@kcl.ac.uk

Abbreviations

CI	Confidence interval
COVID-19	Coronavirus disease 2019
IQR	Inter-quartile range
LC28	Long COVID-19 with duration of symptoms \geq 28 days
LFAT	Lateral flow antigen test
ONS	Office for National Statistics (UK)
OR	Odds Ratio
PCR	Polymerase chain reaction
SARS-CoV-2	Severe acute respiratory syndrome-related coronavirus 2
UK	United Kingdom of Great Britain and Northern Ireland
WHO	World Health Organisation

Viruses mutate over time¹, affecting transmissibility², disease presentation³, and natural or vaccine-induced protective immunity.⁴ The Delta variant of SARS-CoV-2 (B.1.617.2) was identified in India in late 2020 and declared a ‘Variant of Concern’ in May 2021 by the UK⁵, the World Health Organization⁶, and the European Centre for Disease Control⁷, mainly due to evidence of increased transmissibility,^{8,9} possibly larger risk of hospitalisation,^{10,11} and conceivably less effectiveness of vaccination compared with previous variants^{4,12,13}.

In the UK, the Delta variant rapidly became the dominant circulating form of SARS-CoV-2, (from 0.09% at the beginning of April 2021 to >98% at the end of June 2021) displacing the Alpha (B.1.1.7) variant which concomitantly decreased from 98% to 1.67% (Supplementary Table S1, Supplementary Figure S1)¹⁴. On November 27, 2021, a new variant (Omicron B.1.1.529) emerged and spread rapidly, and became the predominant SARS-CoV-2 variant in UK after December 20, 2021. However, on 15 January 2022, Delta variant was still accounting for up to 40% new cases of SARS-CoV-2 infection in many European countries, and 20% cases in UK (<https://www.gisaid.org/hcov19-variants/>). Many other factors also changed contemporaneously, including SARS-CoV-2 prevalence, relaxation of lockdown restrictions, test access criteria, and the delivery of a mass vaccination campaign stratified by age, clinical vulnerability, and healthcare worker status.

We previously described COVID-19 profile, transmissibility, re-infection risk¹⁵, and vaccine effectiveness¹⁶ when the Alpha (B.1.1.7) variant was predominant. Here, we present these data after the Delta variant became predominant, and compare illness from Delta versus Alpha infection, in a large UK community cohort.

Results

Cohort description. 44,718 adults testing positive for SARS-CoV-2 between December 28, 2020 and July 1, 2021, 22,699 had symptoms within requisite timeframes and logged sufficiently regularly for calculation of illness duration: 19,118 individuals when Alpha was predominant and 3581 when Delta was predominant. Demographic characteristics (after age, gender, and 1:1 matching) are presented in Table 1.

Illness profile. Symptoms within the first 28 days of illness are presented in Fig. 1 and Supplementary Table S3 (descriptive data). All symptoms evidenced until day 28 had presented by day 21, in all individuals with both variants. The seven most reported symptoms were the same for Delta as for Alpha infection, though varied in prevalence: headache (75% vs. 67%), fatigue (73% in both), rhinorrhea (71% vs. 54%), anosmia/dysosmia (64% vs. 54%), sneezing (59% vs. 44%), sore throat (56% vs. 42%) and persistent cough (51% vs. 41%).

Correcting for age, sex, and vaccination status at time of positive test, and for false discovery rate, several symptoms were more common during the first 28 days of illness with Delta versus Alpha infection, including fever (OR 2.82 [95% CI 2.44–3.26]), hoarse voice (OR 1.82 [95% CI 1.56; 2.11]), sore throat (OR 1.73, [95% CI 1.5; 2]), and persistent cough (OR 1.64 [95% CI 1.43; 1.88]); conversely, the risk of shortness of breath was lower (OR 0.82 [95% CI 0.69; 0.96]) (Fig. 2, Supplementary Table S4). The odds of five or more symptoms in the first week of illness were higher with Delta versus Alpha infection, whether for the 14 symptoms analysed in Sudre et al.¹⁷ (OR 1.70 [95% CI 1.47; 1.95], $p < 0.00005$) or all symptoms (Supplementary Table S2) (OR 1.78 [95% CI 1.50; 2.11], $p < 0.00005$). However, the risk for any given symptom to last ≥ 7 days was either lower (chills, headache, rhinorrhea, fatigue) or unchanged (Fig. 3; Supplementary Table S4).

Long illness duration. The risk of LC28 was moderately lower with Delta versus Alpha infection (8.7% [311/5581] vs. 10.6% [380/5581] of individuals, OR 0.69 [0.50; 0.94], $p = 0.018$ (considering the cohort overall, with age, sex and vaccination status included as covariates). In a sensitivity analysis considering only unvaccinated individuals (Table 1), there was a trend towards lowered risk of LC28 with Delta versus Alpha infection (OR 0.75 [0.54; 1.04], $p = 0.087$).

Hospital presentation. Hospital care for COVID-19 was needed for 120 (3.4%) of 3581 individuals during the Delta period and 207 (5.8%) of 3581 during the Alpha period. Noting here that the UK vaccination campaign was stratified by age, clinical vulnerability, and health-care worker status, the risk of hospital presentation was moderately but not significantly lower for Delta versus Alpha infection, considered overall (OR 0.76 [95% CI 0.53; 1.11] $p = 0.156$, with age, sex and vaccination status included as covariates) or for unvaccinated individuals alone considered as a sensitivity analysis (OR 0.82 [95% CI 0.56; 1.20], $p = 0.299$).

	Cohort 1 (Alpha)	Cohort 2 (Delta)
Number of individuals	3581	3581
Age in years (median, (IQR))	40 (26–52)	40 (26–52)
Males (%)	41.0	41.0
BMI (kg/m ²) (median, (IQR))	25.1 (22.4–29.0)	24.3 (21.9–27.8)
Vaccination status at time of positive test (numbers with 0/1/2 doses, (%))	3552 (99.2)/29 (0.8)/0 (0.0)	1183 (33.0)/881 (24.6)/1517 (42.4)
Diabetes (n, (%))	77 (2.2)	43 (1.2)
Asthma (n, (%))	488 (13.6)	465 (13.0)
Lung Disease (n, (%))	340 (9.5)	311 (8.7)
Kidney disease (n, (%))	17 (0.5)	20 (0.6)
Heart disease (n, (%))	45 (1.3)	48 (1.3)
Number of individuals with illness duration \geq 28 days (n, (%))	380 (10.6)	311 (8.7)
Number of symptoms in the first week (median, (IQR)) ^a	4 (3–6)	5 (3–7)

Table 1. Characteristics of UK individuals presenting with COVID-19, during periods of Alpha and Delta SARS-CoV-2 variant predominance. ^aNumber of symptoms here considered from the 14 symptoms used in the analysis presented in Sudre et al. (viz.: fatigue, headache, dyspnoea, anosmia/dysosmia, persistent cough, sore throat, fever, myalgias, anorexia ('skipped meals'), chest pain [otherwise undefined], diarrhoea, hoarse voice, abdominal pain and delirium)¹⁷.

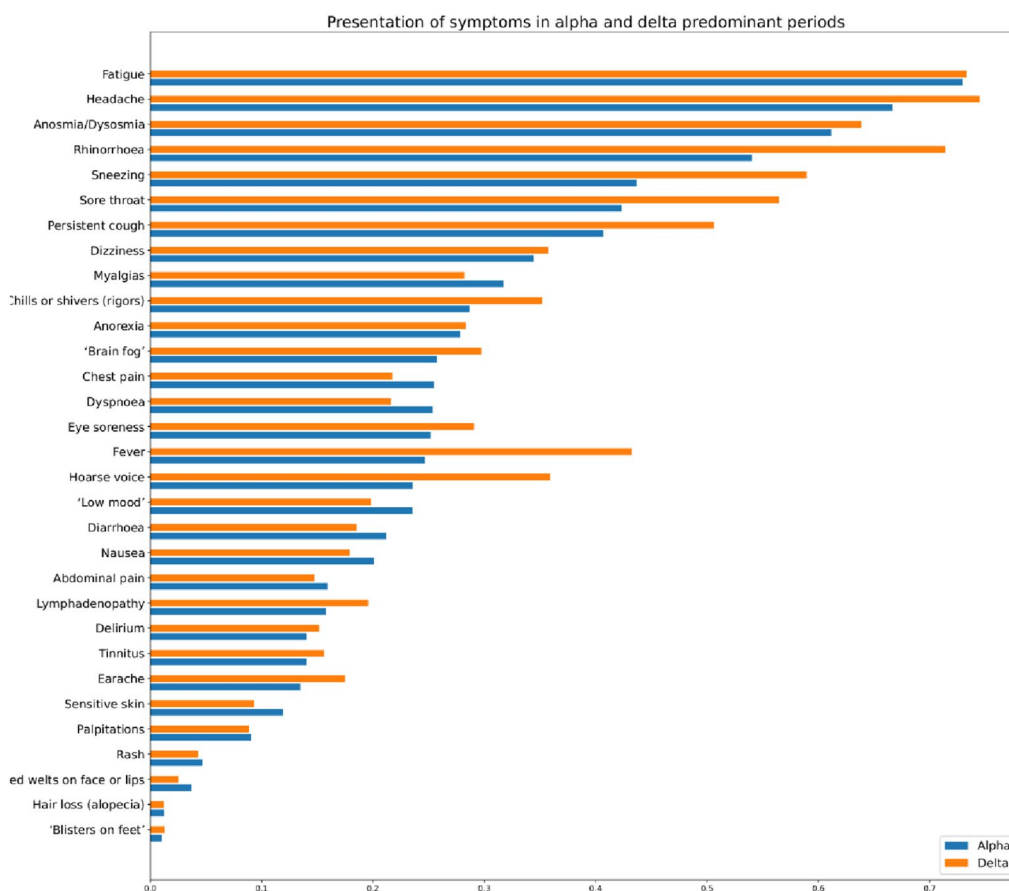


Figure 1. Prevalence of symptoms reported over the course of illness (up to 28 days) in individuals with COVID-19 during periods of SARS-CoV-2 Alpha or Delta variant predominance. Data are matched for age and sex but unmatched for local viral prevalence, lock-down restrictions, or vaccination.

Transmissibility. Consistent with other studies, the Delta variant was more transmissible than Alpha, by 1.47 (95%CI 1.45–1.49) according to a population-weighted average (Table 2), noting wide confidence intervals and variation over time. Estimates per region agreed broadly with some regional variation (Fig. 4, Table 2).

Effect of the Delta variant on re-infection. Figure 5 shows the (small) absolute numbers of re-infections across regions, with: a) the number of positive tests reported by app users; and b) the Delta variant as a proportion of circulating SARS-CoV-2, over time. Spearman correlations between reinfection and positive test incidence ranged from 0.46 in the South East to 0.83 in the Midlands. Correlations between reinfection and Delta variant proportions in each region were lower, ranging from 0.41 in the North East and Yorkshire to 0.69 in the North West. In most regions, the correlation of reinfections with the number of reported tests was higher than the correlation of reinfections with the proportion of Delta variant. Supplementary Table S5 presents characteristics of the bootstrapped distribution (100 samples) of correlations for each region over time. Thus, the rise of SARS-CoV-2 infection during the time of Delta predominance correlates more closely with the rise of incidence of new cases per se, rather than the rise in proportion of cases due to the Delta variant specifically.

Post-vaccination infection during the Delta period. 402,191 app users aged 20–65 years were vaccinated with BNT162b2 (1st dose only: 33,171, 2nd dose: 117,091) or ChAdOx1 nCoV-19 (1st dose only: 59,663, 2nd dose: 192,266) and reported at least one PCR or LFAT test after vaccination between May 26 and July 1, 2021. A positive result was reported by 1723 of 92,834 (1.86%) who had received one dose, and 1722 of 309,357 (0.56%) who had received two doses. Data were compared to 25,395 unvaccinated time-matched participants, in whom 1361 (5.36%) individuals reported a positive test.

After adjustment for population differences in the vaccinated groups using Poisson regressions as described in Methods, the risk reduction of post-vaccination infection after first dose (considered 14–60 days after first dose) was -71.5% (95% CI -74.4 to -68.3) with BNT162b2 and -58.3% (95% CI -63.7 to -52.1) with ChAdOx1 nCoV-19, compared with unvaccinated individuals. The risk reduction was even larger in fully vaccinated individuals (considered 14–60 days after second dose): -84.1% [95% CI -86.9 to -80.6] with BNT162b2, and -69.6% [95% CI -72.9 to -65.9] with ChAdOx1 nCoV-19, compared with unvaccinated controls (Fig. 6).

Discussion

Our large-scale community-based UK study has shown that COVID-19 is clinically similar whether due to Alpha or Delta variants. Ten of 31 symptoms were more common with Delta infection and one with Alpha infection. Although the burden of symptoms in the first week was higher with Delta infection, duration of many individual symptoms was shorter; fewer individuals experienced illness lasting more than 28 days—though saliently this was unchanged in unvaccinated individuals; and there was a trend towards fewer hospital presentations. These observations need to be interpreted in the context of increasing vaccination of the UK population, along with many other environmental and societal changes.

Few studies of COVID-19 due to the Delta variant are available for comparison. One study of 27 infected young individuals reported symptoms in 22 (81%), with the commonest symptoms fever (41%), cough (33%), headache (26%), and sore throat (26%) (duration of illness not reported)¹⁸. Other studies report smaller cohorts. The REACT-1 study Round 14 report (UK data during September 2021, with Delta variant the predominant UK variant) showed a weighted prevalence of individuals testing positive varied greatly by age (0.29% in adults aged > 75 years compared to 2.55% in teenagers and 2.32% in children aged 5–12 years), noting high vaccination rates in older individuals and little or no vaccination in younger age groups at the time of this report¹⁹. However, data on symptoms (duration and/or prevalence) were not reported.

The risk of LC28 was lower with Delta (8.7%) versus Alpha infection (10.6%), although not statistically different in unvaccinated individuals. These results are similar to our previous paper using similar methodology, for individuals infected during the first UK pandemic wave (13.3%)¹⁷. The Post COVID syndrome (Long COVID) is defined as illness duration > 12 weeks after likely SARS-CoV-2 infection (<https://www.nice.org.uk/guidance/NG188>). Our census dates preclude our ability to compare illness duration beyond 28 days between our two cohorts. Estimates of prevalence of the Post-COVID syndrome are difficult, as many studies lack appropriate control groups. A recent meta-analysis of UK longitudinal cohort studies suggested the post-COVID syndrome was present in 1.2–4.8% of individuals²⁰, similar to recently published figures from the Office for National Statistics (ONS) (1.9% of the UK population self-reporting long COVID (diagnosis otherwise unverified) as of October 2, 2021, although only 71% had (or suspected they had) COVID-19 12 weeks earlier (<https://www.ons.gov.uk/peoplepopulationandcommunity/healthandsocialcare/conditionsanddiseases/bulletins/prevalenceofongoingsymptomsfollowingcoronaviruscovid19infectionintheuk/4november2021>)).

We showed a marked increase in transmissibility with the Delta versus non-Delta (i.e., Alpha) variant, noting wide confidence intervals. This analysis does not take into account prior natural infection or vaccination rates within the community; and is likely a combination of both the Delta variant's transmission advantage and its potential ability to evade immunity (whether induced by vaccination or prior natural infection with Alpha or other strains). This estimated increase in transmissibility is greater than we previously estimated for Alpha versus earlier variants using the same methodology [1.35 (95% CI 1.02–1.69)]¹⁵ noting again pertinent differences (e.g., viral prevalence, lockdown restrictions) between the current and previous studies. Estimates in both studies assume that incidence estimated from app users can be made representative of the wider population, using stratification by age and vaccination status. However, other factors such as behavior and socio-economic status are not corrected for by this analysis. Other studies have also identified higher Delta transmissibility, resulting in rising incidence particularly in young unvaccinated age groups, higher re-infection rates, and a higher viral load in infected individuals²¹. Here we note the REACT-1 study report of an exponential increase in infections in children aged 5–17 years in September 2021, coinciding with return-to-school, with most school-age children unvaccinated at this time.

Our study found that for most regions of the UK, the correlation of reinfections with the number of reported positive tests (i.e., incidence of cases) was higher than the correlation of reinfections with the proportion of Delta

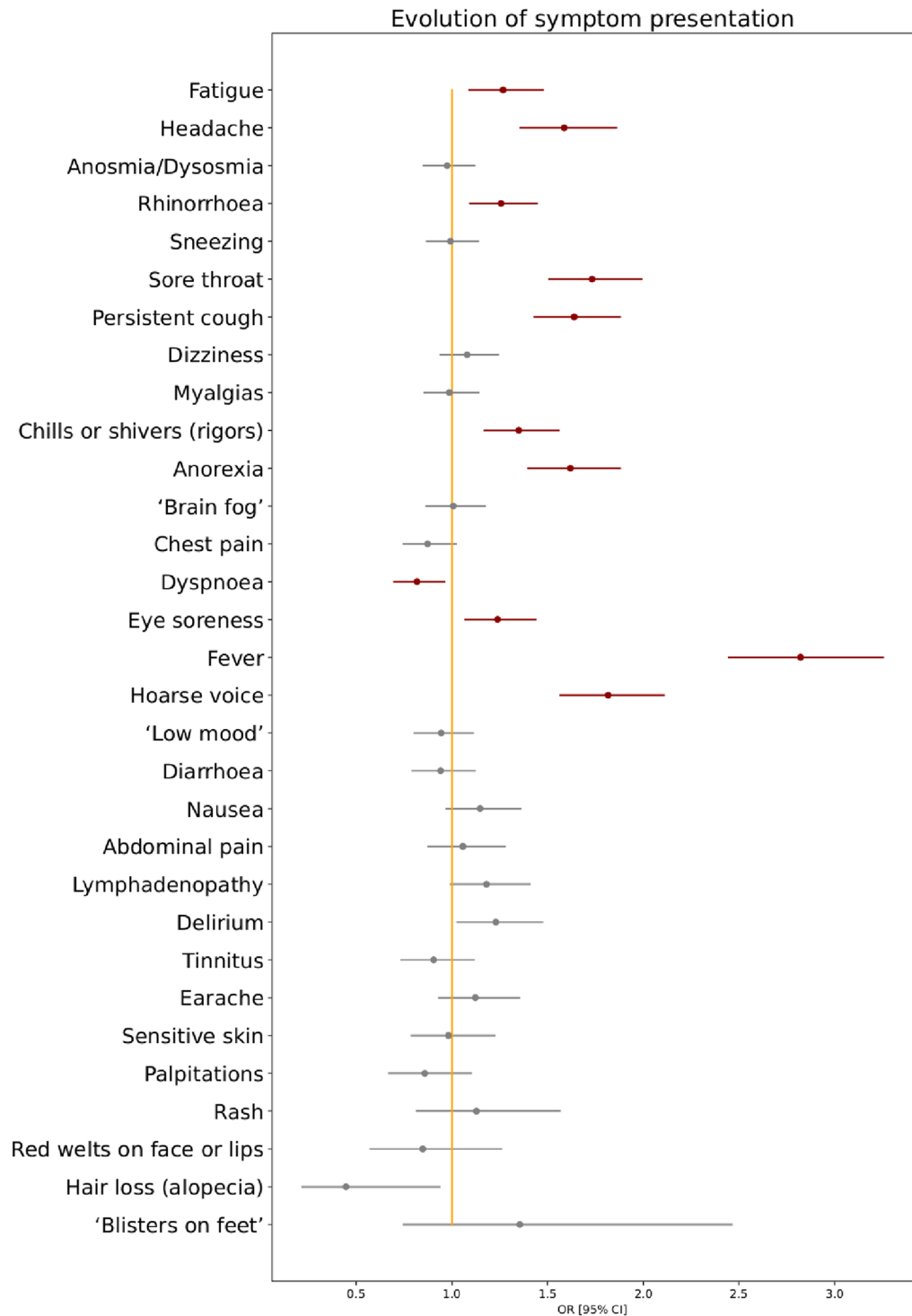


Figure 2. Odds ratios for any symptom presenting within the first 28 days of illness in individuals with COVID-19 during periods of SARS-CoV-2 Delta versus Alpha variant predominance. Age, gender, and vaccination status are included as covariates in this analysis. Red markers encode statistical significance with α -value < 0.05 , whereas grey markers encode non-significant differences, after correction for false discovery rate.

among the circulating variants (i.e., incidence of variant). In other words, the rise in COVID-19 correlated more closely with increase in prevalence of SARS-CoV-2 overall rather than the increased proportion of circulating SARS-CoV-2 due to the Delta variant. SARS-CoV-2 infection provides substantial and persistent immunologic protection for at least several months for most individuals, with a recent systematic review suggesting a risk reduction of reinfection of $> 90\%$, similar to vaccination, and evident for at least 10 months²². However, this may not be uniform across the population. A study of tested individuals followed prospectively for at least 3 months

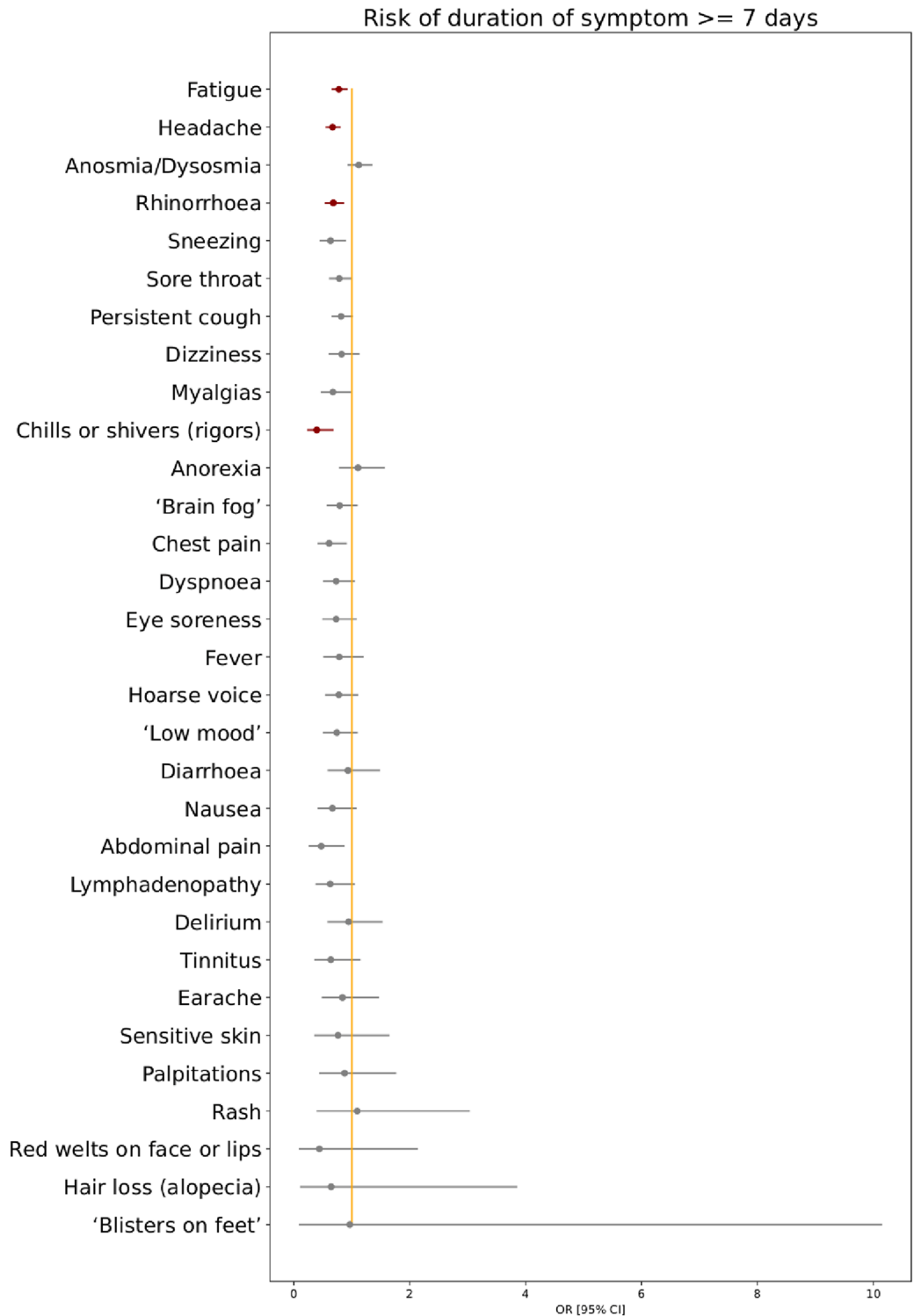


Figure 3. Odds ratios for risk of symptom duration ≥ 7 days for individuals with COVID-19 during periods of SARS-CoV-2 Delta versus Alpha variant predominance. Age, gender, and vaccination.status are included as covariates in this analysis. Red markers encode statistical significance with α -value < 0.05 (after FDR correction), whereas grey markers encode non-significant differences.

demonstrated a protective effect after prior infection of 80.3% for younger individuals (aged 20–59 years) but only 67.4% for older individuals (aged ≥ 60 years), with lower levels of protection in individuals associated with a long-term care facility and/or who had milder initial disease²³. A study of Danish healthcare workers²⁴ found small

United Kingdom Region	Multiplicative R increase [mean (95% CI)]
North East	1.57 (1.55–1.59)
North West	1.47 (1.31–1.64)
Yorkshire and The Humber	1.69 (1.35–2.03)
East Midlands	1.44 (1.13–1.76)
West Midlands	1.52 (1.43–1.61)
East of England	1.34 (1.30–1.37)
London	1.36 (1.09–1.64)
South East	1.47 (1.11–1.84)
South West	1.47 (1.35–1.59)
Scotland	1.44 (1.18–1.69)
Wales	1.49 (1.31–1.66)

Table 2. Increase in $R(t)$ for Delta versus Alpha SARS-CoV-2 variants. $R(t)$ is reported for regions in Great Britain (data from Northern Ireland insufficient to reliably conduct the analysis).

absolute numbers of re-infected individuals (5 of 750 seropositive individuals over 5–6 months). However, 5% of previously seropositive individuals reverted to seronegative status, associated with older age and fewer symptoms with initial infection (noting here that the relationship between antibody titre and subsequent infection risk is currently unclear). In July 2021 UK governmental figures estimated an adjusted odds ratio of reinfection risk from the Delta variant versus the Alpha variant as 1.5. However, this varied according to time since initial infection: the odds ratio was not elevated if initial infection was < 180 days earlier (adjusted odds ratio = 0.8), but was higher if initial infection was \geq 180 days earlier (adjusted odds ratio = 2.4) (https://assets.publishing.service.gov.uk/government/uploads/system/uploads/attachment_data/file/1005517/Technical_Briefing_19.pdf).

Our observational data support effectiveness of both BNT162b2 and ChAdOx1 nCoV-19 vaccines against the Delta variant. Both reduced the risk of testing positive during the Delta period, evident after the first and enhanced after the second dose²⁵. These figures are similar to our previous results when the Alpha variant was predominant¹⁵. We have an inherent bias due to the nature of the UK vaccine rollout, whereby health-care workers, elderly people, and clinically vulnerable individuals were prioritised before the younger population, creating unbalanced demographic characteristics between vaccinated and unvaccinated populations. Moreover, we cannot compare vaccination effectiveness against Alpha versus Delta variants, given the many differences between the two timeframes. Although we attempted to adjust for some of these differences using Poisson regression, behavioural factors are difficult to capture. For example, individuals vaccinated earlier may have changed their behaviours over concern of possible waning antibody status and possible reducing immunity²⁶. However, our results concord with vaccination trial data^{27,28}, and provide support for ongoing vaccination campaigns internationally. Previous data have shown that vaccination is associated with significant reduction in risk of hospitalisation and disease progression to death or mechanical ventilation in individuals with COVID-19^{12,29}. Our data similarly showed a trend towards fewer hospital presentations. Later analyses during further waves of the pandemic will be useful here with the methods and approaches described here similarly applied to assess the impact of emerging variants.

We acknowledge the limitations of our observational study. Self-reported data from a mobile phone app may disproportionately represent more affluent populations and can introduce information bias and/or effect bias, although previous work from the CSS has shown that our self-reported data aligns well with surveys designed to be representative of the population³⁰ and smartphone ownership in the UK is extensive with little evidence that this varies greatly across socio-economic groups. Further, 1600 of 7162 individuals were proxy-reported, which may also affect symptom reporting, although the proportion of proxy-reported individuals as a percentage of total individuals was the same for both time-periods (22.4%). Participants could only report a positive test and we cannot confirm the actual variant causing infection, although our assumptions of Delta and Alpha infection are strongly supported by UK-COG surveillance variant testing. During the study, both overall numbers and individual app users fluctuated in their participation in the CSS-app, potentially for many factors including mass-media information, summer vacation, and perception of relevance. Our populations were matched for age and sex but not BMI; and we note higher diabetes prevalence and BMI in the Alpha cohort. Relevantly, vaccination was not only tiered by age but also to those with co-morbidities including diabetes. As mentioned, the timeframes of Alpha and Delta variant predominance differed with respect to guidance on social distancing and behavior in public spaces, highly likely to affect viral diffusion in the population, thus affecting our transmission calculations. Last, vaccine effectiveness could only be determined in tested individuals, noting that we do not have information regarding the reason for testing in these individuals. We were also only able to assess individuals in the age range of 20–65, in order to avoid unbalanced case/control data. Relevantly, early post-vaccination symptoms can mimic COVID-19³¹ but may not necessarily trigger testing. Here, our previous work showed that vaccinated individuals are more likely to have post-vaccination systemic symptoms after a previously positive test compared to those without known past infection (odds ratios 2.3–4.0), which may bias presentation for SARS-CoV-2 testing post-vaccination.

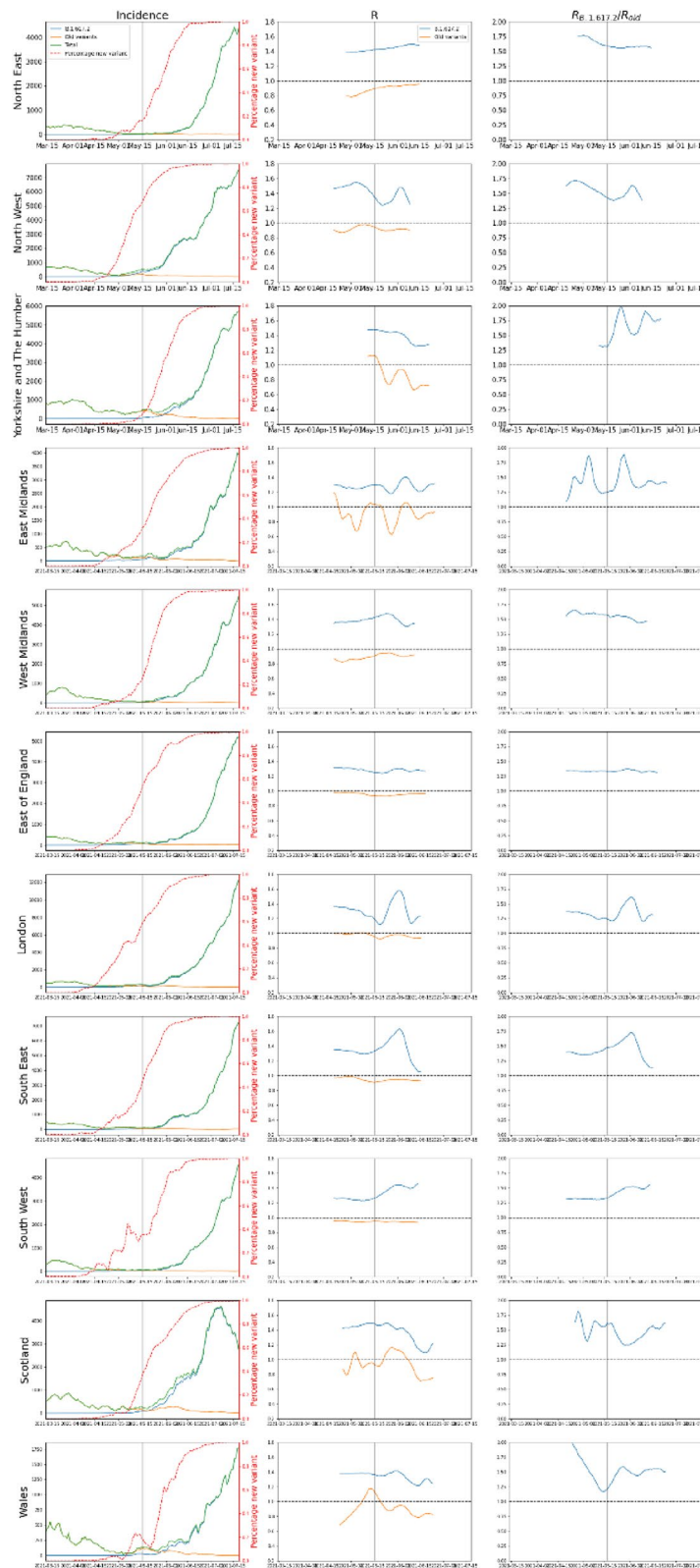


Figure 4. Incidence and $R(t)$ for Delta and non-Delta variants. Left column shows total incidence, and incidence for each variant. Middle column shows $R(t)$ for each variant. Rightmost column shows the ratio $R_{\text{Delta}}/R_{\text{non-Delta}}$, noting that in the timeframe considered non-Delta was predominantly Alpha. Vertical line indicates lifting of some lockdown restrictions on May 17, 2021.

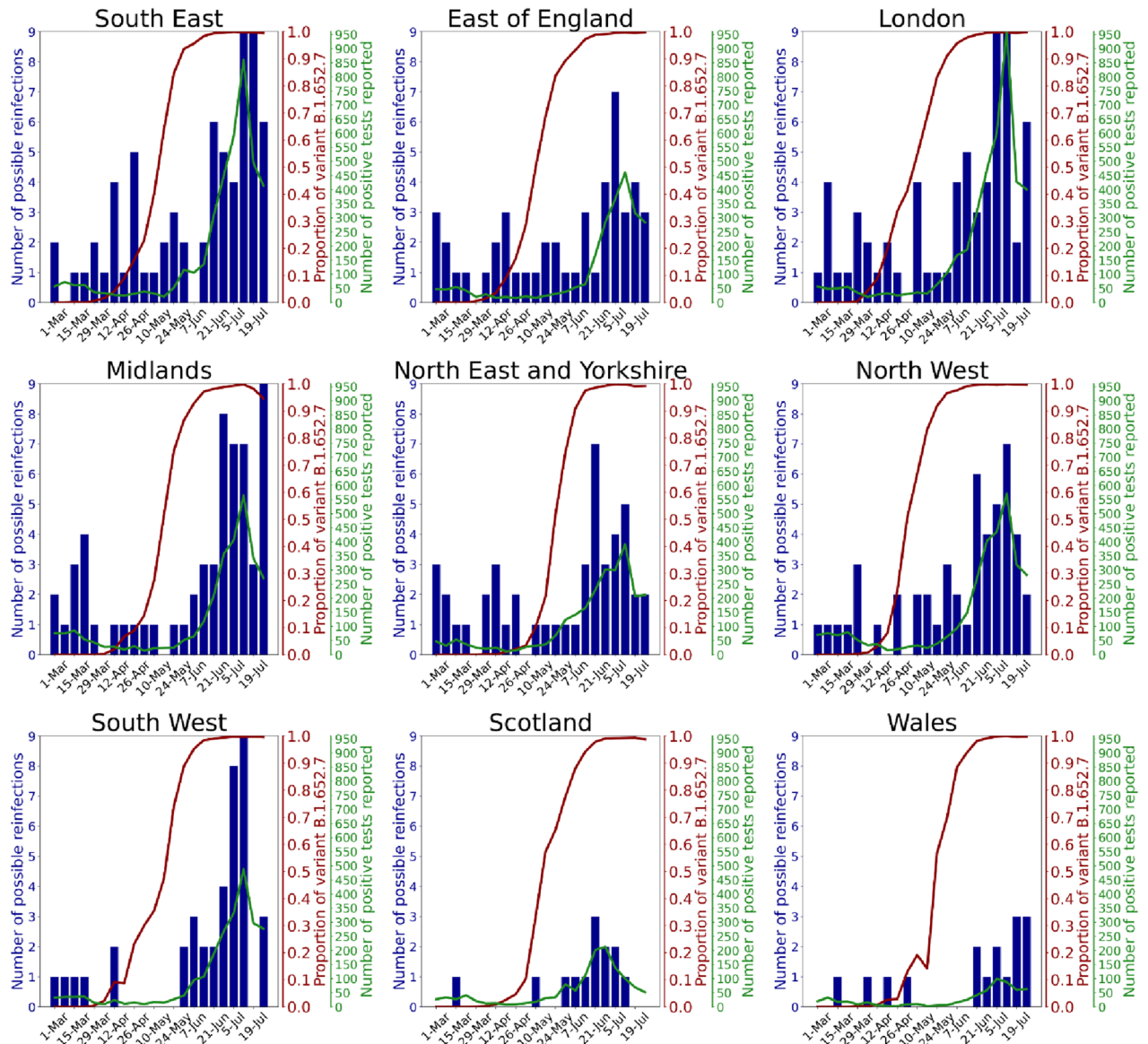


Figure 5. Regional graphs presenting evolution of numbers of reported natural reinfection with SARS-CoV-2. Reported natural reinfection is charted over time in weeks (starting from March 1, 2021) (x-axis). The blue bars graph the absolute number of cases with re-infection. The red line graphs the proportion of the Delta variant among circulating SARS-CoV-2 (COG UK—Supplementary Table S1). The green line graphs the total numbers of positive tests reported by ZOE COVID Symptom Study app users. Data are combined for East and West Midlands, and for Yorkshire and the North East.

Conclusions

The clinical presentation of COVID-19 due to the Delta variant is similar to illness caused by the Alpha variant: although symptom burden in the first week is modestly higher, individual symptom duration was either the same or shorter, and the risk of LC28 was lower. The Delta variant was more transmissible than the preceding predominant variant (i.e., Alpha) but did not increase the risk of reinfection per se. The risk of infection in fully vaccinated individuals was reduced by both BNT162b2 and ChAdOx1 nCoV-19, compared with unvaccinated controls, confirming good vaccine efficacy against the Delta variant and supporting the ongoing anti-SARS-CoV-2 vaccination campaign internationally.

Methods

COVID Symptom study. Prospective longitudinal observational data were collected as part of the King’s College London [KCL]/ZOE COVID Symptom Study, using the ZOE COVID Study App³² (Supplementary Information). Briefly, upon enrolment users provide baseline demographic and health information, and subsequently are prompted daily to record symptoms (or their absence) through direct questioning (Supplementary Table S2) and free text, any SARS-CoV-2 testing and corresponding result, vaccination details, and any hospital presentation. Users can also proxy-report for others. The current study was drawn from approximately 1 million

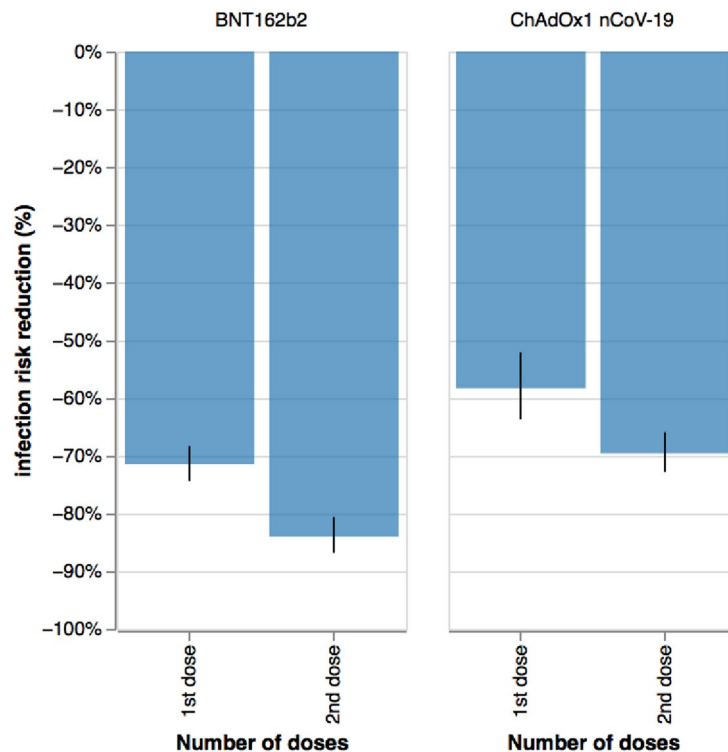


Figure 6. Infection risk reduction (in %) with Delta variant 14–60 days after vaccination after one or two doses of either BNT162b2 or ChAdOx1 nCoV-19 vaccines.

UK app users who logged data at least once between December 28, 2020 to July 1, 2021. Data were extracted and curated through ExeTera software³³.

Ethics approval was granted by the KCL Ethics Committee (LRS-19/20-18210). To ensure informed consent, at registration with the app, all participants were shown informative documentation, and were offered to provide consent for their data to be used for COVID-19 research. Governance was specifically granted for use of proxy-reported data. Research was performed in accordance with the relevant guidelines and regulations, and particularly in full compliance with the Declaration of Helsinki and further updates.

Data from all UK adult participants aged 18 to 100 years (including proxy-reported individuals) who logged a positive PCR or lateral flow antigen test (LFAT) for SARS-CoV-2 between December 28, 2020 to July 1, 2021 were considered. As previously¹⁷, individuals were considered to have COVID-19 if SARS-CoV-2-associated symptoms were reported (or proxy-reported) (Supplementary Table S2) between two weeks before and one week after positive testing. Data were included for individuals who reported at least weekly, from first symptom report until returning to symptom-freedom or until reporting ceased²².

Data were compared between two time periods: December 28, 2020 to May 6, 2021, when the Alpha variant was the predominant circulating SARS-CoV-2 strain (proportion of sequenced strains: >75% from December 28, 2020, reaching >95% by February 3 2021, and remaining >75% until 28 April); and May 26, 2021 to July 1, 2021, when the Delta variant was the predominant strain (>75% from May 26, reaching >95% by June 9 and >99% from June 30 to data census date) (Supplementary Table S1). Individuals logging a positive test did not have variant confirmation by sequencing; thus, illness within these two timeframes was attributed to the predominant circulating variant. Terminology herein reflects this assumption.

Through an Euclidean distance-based algorithm³⁴, individuals with Delta infection were matched 1:1, based on their age and sex, with individuals with Alpha infection. We were unable to match for SARS-CoV-2 prevalence, tiered lockdown restrictions, or vaccination rates, which varied widely across the community and with time during this study.

Symptom data were censored at August 5, 2021, 35 days after last inclusion date for testing positive with Delta infection, allowing at least 28 days' symptom evaluation for all individuals. Symptoms were considered over the entire illness, which by virtue of illness definition could extend outside SARS-CoV-2 testing date boundaries (a maximum of two weeks before and five weeks after testing, allowing for individuals whose illness started up to a week after positive test). To allow for symptom waxing and waning, individuals who returned a healthy report but subsequently logged as symptomatic within seven days of their last unhealthy report were considered unwell from their initial illness, with per-symptom and illness duration calculated accordingly.

We ascertained odds of a given symptom developing within 28 days of illness; and odds of each symptom lasting ≥ 7 days, corrected for age, sex and vaccination status (unvaccinated, 1 dose, 2 doses), with a given vaccination considered valid after 14 days (allowing for evolving immunity). We used false discovery rate to account for multiple comparisons. We assessed risk of illness duration ≥ 28 days (LC28) and hospital presentation (admission

or emergency room attendance), in the cohort overall (similarly adjusted for age, sex and vaccination status) and in unvaccinated individuals alone, as a sensitivity analysis.

Transmissibility. We used data from COVID-19 Genomics UK Consortium (COG-UK) to extract time-series of the percentage of daily positive SARS-CoV-2 testing from the Delta lineage in Scotland, Wales, and each of nine National Health Service (NHS) regions in England. Northern Ireland was excluded due to low sample numbers in the COG-UK dataset. The COG-UK data are produced by sequencing a random sample of positive PCR tests from the general community.

Daily SARS-CoV-2 incidence data for Scotland, Wales, and each NHS region in England were estimated from March 14 to August 8, 2021, using CSS app data and previously described methodology³⁵. The method uses both positive SARS-CoV-2 test results and symptom reports from app users, to estimate incidence. Data are stratified by age and vaccination status to ensure estimates made from the CSS app population are representative of the wider population.

Using COG-UK data to estimate the proportion of Delta in circulation in each region per day, incidence estimates were decomposed into two incidence time-series per region, one for ‘non-Delta’ (in the timeframe considered here, predominantly Alpha [Supplementary Table S1]) and one for Delta, assuming that the two incidence time-series should sum to match total incidence. $R(t)$ was estimated separately for non-Delta and Delta variants, using previously described methodology³⁵. Briefly, we used the relationship $I_{t+1} = I_t \exp(\mu (R(t) - 1))$, where $1/\mu$ is the serial interval and I_t the incidence on day t . We modelled the system as a Poisson process and assumed the serial interval was drawn from a gamma distribution with $\alpha = 6.0$ and $\beta = 1.5$; and used Markov Chain Monte-Carlo to estimate $R(t)$. We compared both multiplicative and additive differences of the new and old $R(t)$ values for days when the Delta proportion in a region was $> 3\%$.

Reinfection during rise of Delta variant. Reinfection was defined as previously³⁶ (presence of two positive PCR or LFAT tests separated by > 90 days, with an asymptomatic period of ≥ 7 days before the second positive test). To assess risk of reinfection during the Delta variant timeframe we performed ecological studies for each region, examining the Spearman correlation between the proportion of circulating SARS-CoV-2 due to Delta (Supplementary Table S5, Supplementary Figure S1) and number of reinfections per week over time, assessed from 10 weeks prior to Delta prevalence of 25% until 10 weeks after Delta prevalence of 75% (22 weeks); and between the number of positive tests reported through the app and the number of reinfections. We compared the bootstrapped distributions of these two correlations in each region, using the Mann–Whitney U test (Supplementary Table S5).

Post-vaccination infection during Delta period. We analysed 515,138 app users who reported vaccination with BNT162b2 (BioNTech–Pfizer) or ChAdOx1 nCoV-19 (Oxford–Astra Zeneca) and were subsequently tested for SARS-CoV-2 (PCR or LFAT) 14–60 days after either first or second vaccination (assessed separately) after 26 May 2021³⁶. Age was restricted to 20–65 years, as most individuals > 65 years were vaccinated and most individuals < 20 years unvaccinated during the time of analysis, biasing the control groups for these ages. Users who had reported SARS-CoV-2 infection previously were excluded. Unvaccinated users reporting SARS-CoV-2 test results in the same or following week as a vaccinated app user served as controls. In the event of multiple tests logged for an individual vaccinated user, either the first positive or the last negative result was selected. For each vaccine and per dose, we modelled rates of positive testing in vaccinated versus unvaccinated individuals, using Poisson regressions adjusting for number of tests, age, co-morbidities, sex, healthcare worker status, obesity, and weekly incidence in the community (by controlling for the date of the test). The adjusted risk reduction was then calculated as $RR = riskratio_{i,n} - 1$, where i is the vaccine type, and $riskratio$ is the ratio of infection rates in vaccinated individuals compared to unvaccinated individuals, derived from our Poisson model.

Ethics. Ethics approval was granted by KCL Ethics Committee (reference LRS-19/20-18210).

Data availability

Data collected in the COVID Symptom Study smartphone app can be shared with other health researchers through the UK National Health Service-funded Health Data Research UK and Secure Anonymised Information Linkage consortium, housed in the UK Secure Research Platform (Swansea, UK). Anonymised data are available to be shared with researchers according to their protocols in the public interest, and an administrative fee might apply. Link at <https://web.www.healthdatagateway.org/dataset/594cfe55-96e3-45ff-874c-2c0006eeb881>. Information on anonymized SARS-CoV-2 test results is recorded as positive/negative/invalid, and sequencing data were not captured.

Received: 17 January 2022; Accepted: 31 May 2022

Published online: 28 June 2022

References

1. Forni, D., Cagliani, R., Pontremoli, C., Clerici, M. & Sironi, M. The substitution spectra of coronavirus genomes. *Brief. Bioinform.* <https://doi.org/10.1093/bib/bbab382> (2021).
2. Forni, D. *et al.* Antigenic variation of SARS-CoV-2 in response to immune pressure. *Mol. Ecol.* <https://doi.org/10.1111/mec.15730> (2021).
3. Anastassopoulou, C., Gkizarioti, Z., Patrinos, G. P. & Tsakris, A. Human genetic factors associated with susceptibility to SARS-CoV-2 infection and COVID-19 disease severity. *Hum. Genomics* <https://doi.org/10.1186/s40246-020-00290-4> (2020).

4. Lopez Bernal, J. *et al.* Effectiveness of Covid-19 Vaccines against the B.1.617.2 (Delta) Variant. *N. Engl. J. Med.* <https://doi.org/10.1056/NEJMoa2108891> (2021).
5. Public Health England. SARS-CoV-2 variants of concern and variants under investigation in England: technical briefing 15. https://assets.publishing.service.gov.uk/government/uploads/system/uploads/attachment_data/file/993879/Variants_of_Concern_VOC_Technical_Briefing_15.pdf. (2021).
6. [ECDC] European Centre for Disease Prevention and Control. Threat assessment brief: emergence of SARS-CoV-2 B.1.617 variants in India and situation in the EU/EEA. <https://www.ecdc.europa.eu/en/publications-data/threat-assessment-emergence-sars-cov-2-b1617-variant>. (2021).
7. [ECDC] European Centre for Disease Prevention and Control. Confirmed cases of COVID-19 variants identified in UK. <https://www.gov.uk/government/news/confirmed-cases-of-covid-19-variants-identified-in-uk>. (2021).
8. Keeling, M. J. Estimating the Transmission Advantage for B. 1.617. 2. https://assets.publishing.service.gov.uk/government/uploads/system/uploads/attachment_data/file/993156/S1269_WARWICKTransmission_Advantage.pdf.
9. Luo, C. H., Morris, C. P., Sachithanandham, J., *et al.* Infection with the SARS-CoV-2 Delta Variant is Associated with Higher Infectious Virus Loads Compared to the Alpha Variant in both Unvaccinated and Vaccinated Individuals. *medRxiv* 2021: 2021.08.15.21262077.
10. Ong, S. W. X. *et al.* Clinical and virological features of SARS-CoV-2 variants of concern: a retrospective cohort study comparing B.1.1.7 (Alpha), B.1.315 (Beta), and B.1.6.17.2 (Delta). *Clin. Infect. Dis.* <https://doi.org/10.1093/cid/ciab721> (2021).
11. Twhig, K. A. *et al.* Hospital admission and emergency care attendance risk for SARS-CoV-2 delta (B16172) compared with alpha (B117) variants of concern: A cohort study. *Lancet Infect. Dis.* [https://doi.org/10.1016/S1473-3099\(21\)00475-8](https://doi.org/10.1016/S1473-3099(21)00475-8) (2021).
12. Puranik, A., Lenehan, P. J., Silvert, E., *et al.* Comparison of two highly-effective mRNA vaccines for COVID-19 during periods of Alpha and Delta variant prevalence. *medRxiv: the preprint server for health sciences.* <https://doi.org/10.1101/2021.08.06.21261707>(2021).
13. Planas, D. *et al.* Reduced sensitivity of SARS-CoV-2 variant Delta to antibody neutralization. *Nature* <https://doi.org/10.1038/s41586-021-03777-9> (2021).
14. Our World in Data. SARS-CoV-2 variants in analyzed sequences, United Kingdom. <https://ourworldindata.org/grapher/covid-variants-area?country=~GBR>.
15. Graham, M. S. *et al.* Changes in symptomatology, reinfection, and transmissibility associated with the SARS-CoV-2 variant B.1.1.7: an ecological study. *Lancet Public Health* [https://doi.org/10.1016/S2468-2667\(21\)00055-4](https://doi.org/10.1016/S2468-2667(21)00055-4) (2021).
16. Menni, C. *et al.* Vaccine side-effects and SARS-CoV-2 infection after vaccination in users of the COVID Symptom Study app in the UK: A prospective observational study. *Lancet Infect. Dis.* [https://doi.org/10.1016/S1473-3099\(21\)00224-3](https://doi.org/10.1016/S1473-3099(21)00224-3) (2021).
17. Sudre, C. H. *et al.* Author Correction: Attributes and predictors of long COVID. *Nat. Med.* <https://doi.org/10.1038/s41591-021-01361-2> (2021).
18. Lam-Hine, T. *et al.* Outbreak Associated with SARS-CoV-2 B.1.617.2 (Delta) Variant in an Elementary School—Marin County, California, May–June 2021. *MMWR Morbidity Mortality Weekly Rep.* **70**, 1. <https://doi.org/10.15585/mmwr.mm7035e2> (2021).
19. Chadeau-Hyam, M., Wang, H., Eales, O., *et al.* REACT-1 study round 14: High and increasing prevalence of SARS-CoV-2 infection among school-aged children during September 2021 and vaccine effectiveness against infection in England. *medRxiv* 2021: 2021.10.14.21264965.
20. Thompson, E. J., Williams, D. M., Walker, A. J., *et al.* Risk factors for long COVID: analyses of 10 longitudinal studies and electronic health records in the UK. <https://doi.org/10.1101/2021.06.24.21259277>.
21. Vöhringer, H. S. *et al.* Genomic reconstruction of the SARS-CoV-2 epidemic in England. *Nature* <https://doi.org/10.1038/s41586-021-04069-y> (2021).
22. Molteni E, Sudre CH, Canas LS, *et al.* Illness characteristics of COVID-19 in children infected with the SARS-CoV-2 Delta variant. *medRxiv* 2021.
23. Spicer, K. B., Glick, C., Cavanaugh, A. M. & Thoroughman, D. Protective immunity after natural infection with severe acute respiratory syndrome coronavirus-2 (SARS-CoV-2)—Kentucky, USA, 2020. *Int. J. Infect. Dis.* <https://doi.org/10.1016/j.ijid.2021.10.010> (2021).
24. Iversen, K. *et al.* Seroprevalence of SARS-CoV-2 antibodies and reduced risk of reinfection through 6 months: a Danish observational cohort study of 44000 healthcare workers. *Clin. Microbiol. Infect.* <https://doi.org/10.1016/j.cmi.2021.09.005> (2021).
25. Sheikh, A., McMenamin, J., Taylor, B. & Robertson, C. SARS-CoV-2 Delta VOC in Scotland: demographics, risk of hospital admission, and vaccine effectiveness. *Lancet* **397**, 1. [https://doi.org/10.1016/S0140-6736\(21\)01358-1](https://doi.org/10.1016/S0140-6736(21)01358-1) (2021).
26. Goldberg, Y. *et al.* Waning immunity after the BNT162b2 vaccine in Israel. *N. Engl. J. Med.* <https://doi.org/10.1056/NEJMoa2114228> (2021).
27. Ramasamy, M. N. *et al.* Safety and immunogenicity of ChAdOx1 nCoV-19 vaccine administered in a prime-boost regimen in young and old adults (COV002): a single-blind, randomised, controlled, phase 2/3 trial. *Lancet* [https://doi.org/10.1016/S0140-6736\(20\)32466-1](https://doi.org/10.1016/S0140-6736(20)32466-1) (2020).
28. Polack, F. P. *et al.* Safety and efficacy of the BNT162b2 mRNA covid-19 vaccine. *N. Engl. J. Med.* **383**, 1. <https://doi.org/10.1056/NEJMoa2034577> (2020).
29. Tenforde, M. W. *et al.* Association between mRNA vaccination and COVID-19 hospitalization and disease severity. *JAMA* <https://doi.org/10.1001/jama.2021.19499> (2021).
30. Menni, C. *et al.* Real-time tracking of self-reported symptoms to predict potential COVID-19. *Nat. Med.* <https://doi.org/10.1038/s41591-020-0916-2> (2020).
31. Canas, L. S., Österdahl, M. F., Deng, J., *et al.* Disentangling post-vaccination symptoms from early COVID-19. *medRxiv* 2021: 2021.07.21.21260906.
32. Drew, D. A. *et al.* Rapid implementation of mobile technology for real-time epidemiology of COVID-19. *Science* <https://doi.org/10.1126/science.abc0473> (2020).
33. Murray, B. *et al.* Accessible data curation and analytics for international-scale citizen science datasets. *Sci. Data* **8**, 297 (2021).
34. Molteni, E. *et al.* Symptoms and syndromes associated with SARS-CoV-2 infection and severity in pregnant women from two community cohorts. *Sci. Rep.* <https://doi.org/10.1038/s41598-021-86452-3> (2021).
35. Varsavsky, T. *et al.* Detecting COVID-19 infection hotspots in England using large-scale self-reported data from a mobile application: a prospective, observational study. *Lancet Public Health* [https://doi.org/10.1016/S2468-2667\(20\)30269-3](https://doi.org/10.1016/S2468-2667(20)30269-3) (2021).
36. Antonelli, M. *et al.* Risk factors and disease profile of post-vaccination SARS-CoV-2 infection in UK users of the COVID Symptom Study app: a prospective, community-based, nested, case-control study. *Lancet Infect. Dis.* [https://doi.org/10.1016/S1473-3099\(21\)00460-6](https://doi.org/10.1016/S1473-3099(21)00460-6) (2021).

Acknowledgements

This research was funded in part by the Wellcome Trust (WT213038/Z/18/Z). This work is also supported by the Wellcome Engineering and Physical Sciences Research Council Centre for Medical Engineering at King's College London (WT203148/Z/16/Z) and the UK Department of Health via the National Institute for Health Research (NIHR) comprehensive Biomedical Research Centre award to Guy's and St Thomas' NHS Foundation

Trust in partnership with King's College London and King's College Hospital NHS Foundation Trust, the Medical Research Council (MRC), and British Heart Foundation. SO and MM are supported by the UK Research and Innovation London Medical Imaging and Artificial Intelligence Centre for Value Based Healthcare. SO is supported by the Wellcome Flagship Programme (WT213038/Z/18/Z). EM is funded by an MRC Skills Development Fellowship Scheme at King's College London. CHS is supported by the National Core Studies, an initiative funded by United Kingdom Research and Innovation, NIHR, and the Health and Safety Executive, and funded by MRC (MC_PC_20030). CHS is also supported by an Alzheimer's Society Junior Fellowship (ASJF-170-11). ZOE Limited supported all aspects of building and running the application and service to all users worldwide. For the purpose of open access, the authors have applied a CC BY public copyright licence to any Author Accepted Manuscript version arising from this submission. COG-UK is supported by funding from the Medical Research Council (MRC) part of UK Research & Innovation (UKRI), the National Institute of Health Research (NIHR) [grant code: MC_PC_19027], and Genome Research Limited, operating as the Wellcome Sanger Institute. The authors are grateful to Michael Absoud and Sunil Bhopal for constructive comments on the paper. For the purpose of open access, the authors have applied a CC BY public copyright licence to any Author Accepted Manuscript version arising from this submission.

Author contributions

K.K., C.H.S., M.S.G., S.O., T.D.S., C.J.S., and E.L.D. contributed to study concept and design. C.H.S., A.M., B.M., J.C., The COG-UK Consortium, JW, TDS, CJS, and SO contributed to acquisition of data. K.K., C.H.S., M.S.G., A.M. and E.L.D. contributed to data analysis and verified the underlying data. K.K., E.M., M.S.G., CHS and E.L.D. contributed to initial drafting of the manuscript. All authors contributed to interpretation of data and critical revision of the manuscript. C.J.S., T.D.S., S.O. and E.L.D. contributed to study supervision. All authors had full access to all the data in the study and had final responsibility for the decision to submit for publication.

Funding

UK Government Department of Health and Social Care, Wellcome Trust, UK Engineering and Physical Sciences Research Council, UK Research and Innovation London Medical Imaging & Artificial Intelligence Centre for Value Based Healthcare, UK National Institute for Health Research, UK Medical Research Council, British Heart Foundation, Alzheimer's Society, and ZOE Limited.

Competing interests

Tim D Spector is co-founder shareholder and consultant of ZOE Limited. Jonathan Wolf, Anna May, Ben Fox, and Joan Capdevila Pujol are employed at ZOE Limited. All the other authors declare no competing interests. Specifically, SO, MM, EM, and CHS are funded by non-competing trusts (see acknowledgments in the manuscript).

Additional information

Supplementary Information The online version contains supplementary material available at <https://doi.org/10.1038/s41598-022-14016-0>.

Correspondence and requests for materials should be addressed to E.L.D.

Reprints and permissions information is available at www.nature.com/reprints.

Publisher's note Springer Nature remains neutral with regard to jurisdictional claims in published maps and institutional affiliations.



Open Access This article is licensed under a Creative Commons Attribution 4.0 International License, which permits use, sharing, adaptation, distribution and reproduction in any medium or format, as long as you give appropriate credit to the original author(s) and the source, provide a link to the Creative Commons licence, and indicate if changes were made. The images or other third party material in this article are included in the article's Creative Commons licence, unless indicated otherwise in a credit line to the material. If material is not included in the article's Creative Commons licence and your intended use is not permitted by statutory regulation or exceeds the permitted use, you will need to obtain permission directly from the copyright holder. To view a copy of this licence, visit <http://creativecommons.org/licenses/by/4.0/>.

© The Author(s) 2022

The COVID-19 Genomics U. K. (COG-UK) Consortium

David M. Aanensen⁹, Khalil Abudahab⁹, Helen Adams¹⁰, Alexander Adams¹¹, Safiah Afifi¹², Dinesh Aggarwal¹³, Shazaad S. Y. Ahmad¹⁴, Louise Aigrain¹⁵, Adela Alcolea-Medina¹⁶, Nabil-Fareed Alikhan¹⁷, Elias Allara¹⁸, Roberto Amato¹⁵, Adrienn Angyal¹⁹, Tara Annett¹¹, Stephen Aplin²⁰, Cristina V. Ariani¹⁵, Hibo Asad¹¹, Amy Ash²¹, Paula Ashfield²², Fiona Ashford²³, Laura Atkinson²⁴, Stephen W. Attwood²⁵, Cressida Auckland²⁶, Alp Aydin¹⁷, David J. Baker¹⁷, Paul Baker²⁷, Carlos E. Balcazar²⁸, Jonathan Ball²⁹, Jeffrey C. Barrett¹⁵, Magdalena Barrow³⁰, Edward Barton³¹, Matthew Bashton³², Andrew R. Bassett¹⁵, Rahul Batra³³, Chris

Baxter³⁴, Nadua Bayzid³⁵, Charlotte Beaver¹⁵, Angela H. Beckett³⁶, Shaun M. Beckwith³⁷, Luke Bedford³⁸, Robert Beer¹², Andrew Beggs³⁹, Katherine L. Bellis¹⁵, Louise Berry⁴⁰, Beatrice Bertolusso⁴¹, Angus Best²³, Emma Betteridge¹⁵, David Bibby⁴², Kelly Bicknell⁴³, Debbie Binns⁴⁴, Alec Birchley¹¹, Paul W. Bird⁴⁵, Chloe Bishop⁴², Rachel Blacow⁴⁶, Victoria Blakey⁴⁷, Beth Blane¹³, Frances Bolt⁴⁸, James Bonfield¹⁵, Stephen Bonner²⁷, David Bonsall⁴⁹, Tim Boswell⁴⁰, Andrew Bosworth¹⁸, Yann Bourgeois⁵⁰, Olivia Boyd⁵¹, Declan T. Bradley⁵², Cassie Breen⁵³, Catherine Bresner⁵⁴, Judith Breuer³⁵, Stephen Bridgett³⁴, Iraad F. Bronner¹⁵, Ellena Brooks¹³, Alice Broos⁵⁵, Julianne R. Brown²⁴, Giselda Bucca⁵⁶, Sarah L. Buchan³⁰, David Buck⁵⁷, Matthew Bull¹¹, Phillipa J. Burns⁵⁸, Shirelle Burton-Fanning⁵⁹, Timothy Byaruhanga²⁹, Matthew Byott⁶⁰, Sharon Campbell⁴⁷, Alessandro M. Carabelli¹³, James S. Cargill⁶¹, Matthew Carlile⁶², Silvia F. Carvalho³⁴, Anna Casey⁶³, Anibolina Castigador⁶⁴, Jana Catalan⁶⁵, Vicki Chalker⁴², Nicola J. Chaloner⁶⁶, Meera Chand⁴², Joseph G. Chappell²⁹, Themoula Charalampous³³, Wendy Chatterton⁶⁷, Yasmin Chaudhry⁶⁸, Carol M. Churcher¹³, Gemma Clark⁴⁰, Phillip Clarke⁶⁹, Benjamin J. Cogger⁶⁶, Kevin Cole⁷⁰, Jennifer Collins⁵⁹, Rachel Colquhoun²⁸, Thomas R. Connor⁵⁴, Kate F. Cook⁷¹, Jason Coombes¹¹, Sally Corden¹¹, Claire Cormie⁷², Nicholas Cortes⁴¹, Marius Cotic³⁵, Seb Cotton⁷³, Simon Cottrell¹¹, Lindsay Coupland⁷⁴, MacGregor Cox¹³, Alison Cox⁴⁸, Noel Craine¹¹, Liam Crawford²³, Aidan Cross⁷⁵, Matthew R. Crown⁷⁶, Dorian Crudgington⁷⁷, Nicola Cumley²³, Tanya Curran⁷⁸, Martin D. Curran⁷⁹, Ana da Silva Filipe⁵⁵, Gavin Dabrera⁴², Alistair C. Darby⁸⁰, Rose K. Davidson⁸¹, Alisha Davies¹¹, Robert M. Davies¹⁵, Thomas Davis⁸², Daniela de Angelis⁸³, Elen De Lacy¹¹, Leonardo de Oliveira Martins¹⁷, Thushan I. de Silva¹⁹, Johnny Debebe⁶², Rebecca Denton-Smith⁸⁴, Samir Dervisevic⁷⁴, Rebecca Dewar⁷³, Jayasree Dey²⁹, Joana Dias⁷², Donald Dobie²², Matthew J. Dorman¹⁵, Fatima Downing¹¹, Megan Driscoll³⁵, Louis du Plessis²⁵, Nichola Duckworth⁶⁹, Jillian Durham¹⁵, Kirstine Eastick⁵⁸, Lisa J. Easton⁶⁶, Richard Eccles⁸⁰, Jonathan Edgeworth³³, Sue Edwards⁴¹, Kate El Bouzidi⁸⁵, Sahar Eldirdiri⁸², Nicholas Ellaby⁴², Scott Elliott⁴³, Gary Eltringham⁵⁹, Leah Ensell³⁵, Michelle J. Erkiert⁶⁶, Marina Escalera Zamudio²⁵, Sarah Essex²⁷, Johnathan M. Evans¹¹, Cariad Evans⁸⁶, William Everson⁵⁸, Derek J. Fairley⁷⁸, Karlie Fallon⁴⁵, Arezou Fanaie⁸⁷, Ben W. Farr¹⁵, Christopher Fearn⁷¹, Theresa Feltwell¹³, Lynne Ferguson⁸⁸, Laia Fina¹¹, Flavia Flaviani⁸⁹, Vicki M. Fleming⁴⁰, Sally Forrest⁷², Ebenezer Foster-Nyarko¹⁷, Benjamin H. Foulkes¹⁹, Luke Foulser¹⁵, Mireille Fragakis¹³, Dan Frampton⁹⁰, Sarah Francois²⁵, Christophe Fraser⁴⁹, Timothy M. Freeman¹⁹, Helen Fryer⁴⁹, Marc Fuchs³⁴, William Fuller⁵⁴, Kavitha Gajee⁵⁸, Katerina Galai¹³, Abbie Gallagher⁷³, Eileen Gallagher⁴², Michael D. Gallagher²⁸, Marta Gallis¹⁹, Amy Gaskin¹¹, Bree Gatica-Wilcox¹¹, Lily Geidelberg⁵¹, Matthew Gemmell⁸⁰, Iliana Georgana⁶⁸, Ryan P. George¹⁴, Laura Gifford¹¹, Lauren Gilbert¹¹, Sophia T. Girgis⁷², Sharon Glaysher⁴³, Emily J. Goldstein⁸⁸, Tanya Golubchik⁴⁹, Andrea N. Gomes⁹¹, Sónia Gonçalves¹⁵, Ian G. Goodfellow⁶⁸, Scott Goodwin¹⁵, Salman Goudarzi⁷¹, Marina Gourtovaia¹⁵, Clive Graham³¹, Lee Graham¹¹, Paul R. Grant⁶⁷, Luke R. Green¹⁹, Angie Green⁵⁷, Jane Greenaway⁸⁴, Richard Gregory⁸⁰, Martyn Guest⁵⁴, Rory N. Gunson⁴⁶, Ravi K. Gupta⁷², Bernardo Gutierrez²⁵, Sam T. Haldenby⁸⁰, William L. Hamilton⁹², Samantha E. Hansford¹⁹, Tanzina Haque⁹³, Kathryn A. Harris²⁴, Ian Harrison⁴², Ewan M. Harrison¹⁵, Jennifer Hart⁹³, John A. Hartley³⁵, William T. Harvey⁵⁵, Matthew Harvey²⁰, Mohammed O. Hassan-Ibrahim⁶⁶, Judith Heaney⁶⁰, Thomas Helmer⁴⁵, John H. Henderson⁷⁶, Andrew R. Hesketh⁵⁶, Jessica Hey¹¹, David Heyburn¹¹, Ellen E. Higginson⁷², Verity Hill²⁸, Jack D. Hill²⁹, Rachel A. Hilson⁸⁷, Ember Hilvers¹¹, Matthew T. G. Holden⁹⁴, Amy Hollis⁷⁶, Christopher W. Holmes⁴⁵, Nadine Holmes⁶², Alison H. Holmes⁴⁸, Richard Hopes¹⁸, Hailey R. Hornsby¹⁹, Myra Hosmillo⁶⁸, Catherine Houlihan³⁵, Hannah C. Howson-Wells⁴⁰, Sharon N. Hsu¹⁹, Jonathan Hubb⁴², Hannah Huckson⁶⁶, Warwick Hughes⁶¹, Joseph Hughes⁵⁵, Margaret Hughes⁸⁰, Stephanie Hutchings¹⁸, Giles Idle⁷⁰, Chris J. Illingworth⁸³, Robert Impey⁴³, Dianne Irish-Tavares⁹³, Miren Iturriza-Gomara⁸⁰, Rhys Izuagbe⁶⁸, Chris Jackson⁸³, Ben Jackson²⁸, Leigh M. Jackson⁹⁵, Kathryn A. Jackson⁸⁰, David K. Jackson¹⁵, Aminu S. Jahun⁶⁸, Victoria James⁴⁴, Keith James¹⁵, Christopher Jeanes⁹⁶, Aaron R. Jeffries⁹⁵, Sarah Jeremiah²⁰, Andrew Jermy¹³, Michaela John¹², Rob Johnson⁵¹, Kate Johnson⁸⁶, Ian Johnston¹⁵, Owen Jones⁵⁴, Sophie Jones¹¹, Hannah Jones¹¹, Christopher R. Jones²⁶, Neil Jones⁶⁵, Amelia Joseph⁴⁰, Sarah Judges¹³, Gemma L. Kay¹⁷, Sally Kay¹⁵, Jon-Paul Keatley¹⁵, Alexander J. Keeley¹⁹, Anita Kenyon⁸², Leanne M. Kermack⁷², Manjinder Khakh⁴⁰, Stephen P. Kidd⁴¹, Maimuna Kimuli⁹¹, Stuart Kirk⁶⁷, Christine Kitchen⁵⁴, Katie Kitchman⁵⁸, Bridget A. Knight²⁶, Cherian Koshy²¹, Moritz U. G. Kraemer²⁵, Sara Kumziene-Summerhayes¹¹,

Dominic Kwiatkowski¹⁵, Angie Lackenby⁴², Kenneth G. Laing⁹⁷, Temi Lampejo⁸⁵, Cordelia F. Langford¹⁵, Deborah Lavin³⁴, Andrew I. Lawton⁹⁸, Jack C. D. Lee²⁴, David Lee⁴², Stefanie V. Lensing¹⁵, Steven Leonard¹⁵, Lisa J. Levett⁶⁷, Thanh Le-Viet¹⁷, Jonathan Lewis⁶⁶, Kevin Lewis¹⁵, Jennifer Liddle¹⁵, Steven Liggett²⁷, Patrick J. Lillie⁵⁸, Benjamin B. Lindsey¹⁹, Michelle M. Lister⁴⁰, Rich Livett¹⁵, Stephanie Lo¹⁵, Nicholas J. Loman⁹⁹, Matthew W. Loose⁶², Stavroula F. Louka¹⁹, Katie F. Loveson⁷¹, Sarah Lowdon⁶⁶, Hannah Lowe¹⁰⁰, Helen L. Lowe³⁵, Anita O. Lucaci⁸⁰, Catherine Ludden¹³, Jessica Lynch⁴¹, Ronan A. Lyons¹⁰¹, Katrina Lythgoe⁴⁹, Nicholas W. Machin¹⁴, George MacIntyre-Cockett⁵⁷, Andrew Mack⁵⁴, Ben Macklin⁷⁷, Alasdair Maclean⁸⁸, Emily Macnaughton⁶⁴, Pinglawathee Madona⁴⁸, Mailis Maes⁷², Laurentiu Maftei³⁵, Adhyana I. K. Mahanama²⁰, Tabitha W. Mahungu⁹³, Daniel Mair⁵⁵, Joshua Maksimovic¹², Cassandra S. Malone⁶⁶, Daniel Maloney²⁸, Nikos Manesis⁴², Robin Manley⁹⁵, Anna Mantzouratou³⁰, Angela Marchbank⁵⁴, Arun Mariappan³⁴, Inigo Martincorena¹⁵, Rocio T. Martinez Nunez¹⁰², Alison E. Mather¹⁷, Patrick Maxwell¹³, Megan Mayhew²³, Tamyo Mbisa⁴², Clare M. McCann⁷⁶, Shane A. McCarthy¹⁵, Kathryn McCluggage¹², Patrick C. McClure²⁹, J. T. McCrone²⁸, Martin P. McHugh⁷³, James P. McKenna⁷⁸, Caoimhe McKerr¹¹, Georgina M. McManus¹³, Claire L. McMurray⁴⁵, Claire McMurray⁹⁹, Alan McNally⁹⁹, Lizzie Meadows¹⁷, Nathan Medd²⁸, Oliver Megram²³, Mirko Menegazzo⁹, Ian Merrick⁵⁴, Stephen L. Michell⁹⁵, Michelle L. Michelsen⁹⁵, Mariyam Mirfenderesky⁷⁵, Jeremy Mirza²³, Julia Miskelly³⁴, Emma Moles-Garcia²³, Robin J. Moll¹⁵, Zoltan Molnar³⁴, Irene M. Monahan⁹⁷, Matteo Mondani³⁵, Siddharth Mookerjee⁴⁸, Christopher Moore⁶², Jonathan Moore¹⁰³, Nathan Moore⁴¹, Catherine Moore¹¹, Helen Morcrette²⁶, Sian Morgan¹², Mari Morgan¹¹, Matilde Mori¹⁰⁴, Arthur Morriss⁵⁴, Samuel Moses¹⁰⁰, Craig Mower²⁷, Peter Muir¹⁸, Afrida Mukaddas⁵⁵, Florence Munemo⁶⁶, Robert Munn⁵⁴, Abigail Murray³⁷, Leanne J. Murray²⁷, Darren R. Murray⁹¹, Manasa Mutingwende⁶⁶, Richard Myers⁴², Eleni Nastouli³⁵, Gaia Nebbia³³, Andrew Nelson⁷⁶, Charlotte Nelson⁸⁰, Sam Nicholls⁹⁹, Jenna Nichols⁵⁵, Roberto Nicodemi⁶⁶, Kyriaki Nomikou⁵⁵, Justin O'Grady¹⁷, Sarah O'Brien¹⁰⁵, Mina Odedra⁴⁵, Natasha Ohemeng-Kumi¹⁶, Karen Oliver¹⁵, Richard J. Orton⁵⁵, Husam Osman¹⁸, Áine O'Toole²⁸, Nicole Pacchiarini¹¹, Debra Padgett³¹, Andrew J. Page¹⁷, Emily J. Park²⁹, Naomi R. Park¹⁵, Matthew D. Parker¹⁹, Surendra Parmar⁷⁹, David G. Partridge⁸⁶, David Pascall⁸³, Amita Patel³³, Bindi Patel³³, Steve Paterson⁸⁰, Brendan A. I. Payne⁵⁹, Sharon J. Peacock¹³, Clare Pearson¹⁸, Emanuela Pelosi²⁰, Benita Percival²³, Jon Perkins⁴⁶, Malorie Perry¹¹, Malte L. Pinckert⁶⁸, Steven Platt⁴², Olga Podplomyk⁶⁶, Manoj Pohare¹⁹, Marcus Pond⁴⁸, Cassie F. Pope¹⁰⁶, Radoslaw Poplawski⁹⁹, Jessica Powell¹¹, Jennifer Poyner²⁶, Liam Prestwood¹⁵, Anna Price⁵⁴, James R. Price⁴⁸, Jacqui A. Prieto²⁰, David T. Pritchard⁴⁴, Sophie J. Prosolek¹⁷, Georgia Pugh¹¹, Monika Pusok⁶⁷, Oliver G. Pybus²⁵, Hannah M. Pymont¹⁸, Michael A. Quail¹⁵, Joshua Quick⁹⁹, Clara Radulescu³⁴, Jayna Raghwan²⁵, Manon Ragonnet-Cronin⁵¹, Lucille Rainbow⁸⁰, Diana Rajan¹⁵, Shavanthi Rajatileka¹⁵, Newara A. Ramadan¹⁰⁷, Andrew Rambaut²⁸, John Ramble¹⁶, Paul A. Randell⁴⁸, Paul Randell⁶⁶, Liz Ratcliffe⁶³, Veena Raviprakash⁴⁷, Mohammad Raza⁸⁶, Nicholas M. Redshaw¹⁵, Sara Rey¹¹, Nicola Reynolds¹⁰⁸, Alex Richter³⁹, David L. Robertson⁵⁵, Esther Robinson¹⁸, Samuel C. Robson³⁶, Fiona Rogan³⁴, Stefan Rooke⁹⁴, Will Rowe⁹⁹, Sunando Roy³⁵, Steven Rudder¹⁷, Chris Ruis⁷², Steven Rushton¹⁰⁵, Felicity Ryan¹⁰⁰, Kordo Saeed²⁰, Buddhini Samaraweera²⁰, Christine M. Sambles⁹⁵, Roy Sanderson¹⁰⁵, Theo Sanderson¹⁵, Fei Sang⁶², Thea Sass²⁰, Emily Scher²⁸, Garren Scott³¹, Carol Scott¹⁵, Jasveen Sehmi¹⁶, Sharif Shaaban⁹⁴, Divya Shah²⁴, Jessica Shaw⁴⁵, Ekaterina Shelest³⁶, James G. Shepherd⁵⁵, Liz A. Sheridan⁷⁷, Nicola Sheriff⁴⁷, Lesley Shirley¹⁵, John Sillitoe¹⁵, Siona Silveira²⁰, David A. Simpson³⁴, Aditi Singh³⁴, Dawn Singleton³⁷, Timofey Skvortsov³⁴, Tim J. Sloan⁶⁹, Graciela Sluga¹⁰⁹, Ken Smith¹³, Kim S. Smith¹³, Perminder Smith¹⁶, Darren L. Smith³², Louise Smith¹¹⁰, Colin P. Smith⁵⁶, Nikki Smith¹⁹, Katherine L. Smollett¹¹¹, Luke B. Snell³³, Thomas Somassa⁶⁶, Joel Southgate⁵⁴, Karla Spellman¹², Michael H. Spencer Chapman¹⁵, Lewis G. Spurgin¹¹⁰, Moira J. Spyer¹¹², Rachael Stanley⁷⁴, William Stanley⁷⁶, Thomas D. Stanton²⁸, Igor Starinskij⁵⁵, Joanne Stockton⁹⁹, Susanne Stonehouse¹⁰³, Nathaniel Storey²⁴, David J. Studholme⁹⁵, Malur Sudhanva⁸⁵, Emma Swindells⁸⁴, Yusri Taha⁵⁹, Ngee Keong Tan¹¹³, Julian W. Tang⁴⁵, Miao Tang³⁴, Ben E. W. Taylor⁹, Joshua F. Taylor¹¹³, Sarah Taylor¹¹, Ben Temperton⁹⁵, Kate E. Templeton⁷³, Claire Thomas⁴¹, Laura Thomson⁴⁹, Emma C. Thomson⁵⁵, Alicia Thornton⁴², Scott A. J. Thurston¹⁵, John A. Todd⁵⁷, Rachael Tomb⁸⁸, Lily Tong⁵⁵, Gerry Tonkin-Hill¹⁵, M. Estee Torok⁹², Jaime M. Tovar-Corona¹⁵, Amy Trebes⁵⁷, Alexander J. Trotter¹⁷, Ioulia Tsatsani⁵⁵, Robyn Turnbull⁸⁴, Lance Turtle⁸⁰,

Katherine A. Twohig⁴², Helen Umpleby²⁰, Anthony P. Underwood⁹, Edith E. Vamos⁸⁰, Tetyana I. Vasylyeva²⁵, Sreenu Vattipally⁵⁵, Gabrielle Vernet⁴¹, Barry B. Vipond¹⁸, Erik M. Volz⁵¹, Sarah Walsh⁶⁹, Dennis Wang¹⁹, Ben Warne¹¹⁴, Joanna Warwick-Dugdale⁹⁵, Elizabeth Wastnedge⁷³, Joanne Watkins¹¹, Louisa K. Watson²⁷, Sheila Waugh⁵⁹, Hermione J. Webster⁸⁰, Danni Weldon¹⁵, Elaine Westwick¹³, Thomas Whalley⁵⁴, Helen Wheeler²⁰, Mark Whitehead⁸⁰, Max Whiteley¹⁹, Andrew Whitwham¹⁵, Claudia Wierzbicki⁸⁰, Nicholas J. Willford⁴⁵, Lesley-Anne Williams⁴⁷, Rebecca Williams⁴¹, Cheryl Williams¹¹⁵, Chris Williams¹¹, Charlotte A. Williams³⁵, Rachel J. Williams³⁵, Thomas Williams²⁸, Catryn Williams¹¹, Kathleen A. Williamson²⁸, Eleri Wilson-Davies²⁰, Eric Witele⁹³, Karen T. Withell¹⁰⁹, Adam A. Witney⁹⁷, Paige Wolverson¹⁹, Nick Wong⁴⁴, Trudy Workman⁵⁴, Victoria Wright⁶², Derek W. Wright⁵⁵, Tim Wyatt⁵², Sarah Wyllie⁴³, Li Xu-McCrae¹¹⁶, Mehmet Yavus⁸⁶, Geraldine Yaze⁸⁷, Corin A. Yeats⁹, Gonzalo Yebra⁹⁴, Wen C. Yew⁷⁶, Gregory R. Young³², Jamie Young⁷², Alex E. Zarebski²⁵ & Peijun Zhang¹⁹

⁹Centre for Genomic Pathogen Surveillance, University of Oxford, Oxford, UK. ¹⁰Betsi Cadwaladr University Health Board, Bangor, UK. ¹¹Public Health Wales, Cardiff, UK. ¹²Cardiff and Vale University Health Board, Cardiff, UK. ¹³Department of Medicine, University of Cambridge, Cambridge, UK. ¹⁴Manchester University NHS Foundation Trust, Manchester, UK. ¹⁵Wellcome Sanger Institute, Manchester, UK. ¹⁶Guy's and St. Thomas' NHS Foundation Trust, London, UK. ¹⁷Quadram Institute Bioscience, Norwich, UK. ¹⁸Public Health England, London, UK. ¹⁹University of Sheffield, Sheffield, UK. ²⁰University Hospital Southampton NHS Foundation Trust, Southampton, UK. ²¹Barking, Havering and Redbridge University Hospitals NHS Trust, Romford, UK. ²²The Royal Wolverhampton NHS Trust, Wolverhampton, UK. ²³Turnkey Laboratory, University of Birmingham, Birmingham, UK. ²⁴Great Ormond Street Hospital for Children NHS Foundation Trust, London, UK. ²⁵Department of Zoology, University of Oxford, Oxford, UK. ²⁶Royal Devon and Exeter NHS Foundation Trust, Wonford, UK. ²⁷South Tees Hospitals NHS Foundation Trust, Middlesbrough, UK. ²⁸University of Edinburgh, Edinburgh, UK. ²⁹Virology, School of Life Sciences, Queens Medical Centre, University of Nottingham, Nottingham, UK. ³⁰Bournemouth University, Poole, UK. ³¹North Cumbria Integrated Care NHS Foundation Trust, Cumbria, UK. ³²Hub for Biotechnology in the Built Environment, Northumbria University, Newcastle upon Tyne, UK. ³³Centre for Clinical Infection and Diagnostics Research, Department of Infectious Diseases, Guy's and St Thomas' NHS Foundation Trust, London, UK. ³⁴Queen's University Belfast, Belfast, UK. ³⁵University College London Hospitals NHS Foundation Trust, London, UK. ³⁶Centre for Enzyme Innovation, University of Portsmouth, Portsmouth, UK. ³⁷Blackpool Teaching Hospitals NHS Foundation Trust, Blackpool, UK. ³⁸East Suffolk and North Essex NHS Foundation Trust, Colchester, UK. ³⁹University of Birmingham, Birmingham, UK. ⁴⁰Clinical Microbiology Department, Queens Medical Centre, Nottingham University Hospitals NHS Trust, Nottingham, UK. ⁴¹Hampshire Hospitals NHS Foundation Trust, Basingstoke, UK. ⁴²Public Health England, Colindale, UK. ⁴³Portsmouth Hospitals University NHS Trust, Portsmouth, UK. ⁴⁴Microbiology Department, Buckinghamshire Healthcare NHS Trust, Amersham, UK. ⁴⁵Clinical Microbiology, University Hospitals of Leicester NHS Trust, Leicester, UK. ⁴⁶NHS Greater Glasgow and Clyde, Glasgow, UK. ⁴⁷County Durham and Darlington NHS Foundation Trust, Darlington, UK. ⁴⁸Imperial College Healthcare NHS Trust, London, UK. ⁴⁹Big Data Institute, Nuffield Department of Medicine, University of Oxford, Oxford, UK. ⁵⁰School of Biological Sciences, University of Portsmouth, Portsmouth, UK. ⁵¹Imperial College London, London, UK. ⁵²Public Health Agency, Northern Ireland, Belfast, UK. ⁵³Liverpool Clinical Laboratories, Liverpool, UK. ⁵⁴Cardiff University, Cardiff, UK. ⁵⁵MRC-University of Glasgow Centre for Virus Research, Glasgow, UK. ⁵⁶University of Brighton, Brighton, UK. ⁵⁷Wellcome Centre for Human Genetics, Nuffield Department of Medicine, University of Oxford, Oxford, UK. ⁵⁸Hull University Teaching Hospitals NHS Trust, Hull, UK. ⁵⁹The Newcastle Upon Tyne Hospitals NHS Foundation Trust, Newcastle upon Tyne, UK. ⁶⁰University College London Hospital Advanced Pathogen Diagnostics Unit, London, UK. ⁶¹East Sussex Healthcare NHS Trust, Seaford, UK. ⁶²Deep Seq, School of Life Sciences, Queens Medical Centre, University of Nottingham, Nottingham, UK. ⁶³Queen Elizabeth Hospital, Birmingham, Birmingham, UK. ⁶⁴Isle of Wight NHS Trust, Newport, UK. ⁶⁵Whittington Health NHS Trust, London, UK. ⁶⁶University Hospitals Sussex NHS Foundation Trust, Southampton, UK. ⁶⁷Health Services Laboratories, London, UK. ⁶⁸Division of Virology, Department of Pathology, University of Cambridge, Cambridge, UK. ⁶⁹Path Links, Northern Lincolnshire and Goole NHS Foundation Trust, London, UK. ⁷⁰Northumbria Healthcare NHS Foundation Trust, Newcastle upon Tyne, UK. ⁷¹School of Pharmacy & Biomedical Sciences, University of Portsmouth, Portsmouth, UK. ⁷²University of Cambridge, Cambridge, UK. ⁷³NHS Lothian, Edinburgh, UK. ⁷⁴Norfolk and Norwich University Hospitals NHS Foundation Trust, Norwich, UK. ⁷⁵North Middlesex University Hospital NHS Trust, London, UK. ⁷⁶Northumbria University, Newcastle upon Tyne, UK. ⁷⁷University Hospitals Dorset NHS Foundation Trust, London, UK. ⁷⁸Belfast Health & Social Care Trust, Belfast, UK. ⁷⁹Public Health England, Cambridge, Cambridge, UK. ⁸⁰University of Liverpool, Liverpool, UK. ⁸¹University of East Anglia, Norwich, UK. ⁸²Department of Microbiology, Kettering General Hospital, Kettering, UK. ⁸³MRC Biostatistics Unit, University of Cambridge, Cambridge, UK. ⁸⁴North Tees and Hartlepool NHS Foundation Trust, Durham, UK. ⁸⁵King's College Hospital NHS Foundation Trust, London, UK. ⁸⁶Sheffield Teaching Hospitals NHS Foundation Trust, Sheffield, UK. ⁸⁷Watford General Hospital, Watford, UK. ⁸⁸West of Scotland Specialist Virology Centre, NHS Greater Glasgow and Clyde, Glasgow, UK. ⁸⁹Guy's and St. Thomas' Biomedical Research Centre, London, UK. ⁹⁰Division of Infection and Immunity, University College London, London, UK. ⁹¹The Royal Marsden NHS Foundation Trust, London, UK. ⁹²Department of Infectious Diseases and Microbiology, Cambridge University Hospitals NHS Foundation Trust, Cambridge, UK. ⁹³Royal Free London NHS Foundation Trust, London, UK. ⁹⁴Public Health Scotland, London, UK. ⁹⁵University of Exeter, Exeter, UK. ⁹⁶The Queen Elizabeth Hospital King's Lynn NHS Foundation Trust, King's Lynn,

UK. ⁹⁷Institute for Infection and Immunity, St George's University of London, London, UK. ⁹⁸Southwest Pathology Services, Taunton, UK. ⁹⁹Institute of Microbiology and Infection, University of Birmingham, Birmingham, UK. ¹⁰⁰East Kent Hospitals University NHS Foundation Trust, London, UK. ¹⁰¹Swansea University, Swansea, UK. ¹⁰²King's College London, London, UK. ¹⁰³Gateshead Health NHS Foundation Trust, Gateshead, UK. ¹⁰⁴University of Southampton, Southampton, UK. ¹⁰⁵Newcastle University, Newcastle upon Tyne, UK. ¹⁰⁶Infection Care Group, St George's University Hospitals NHS Foundation Trust, London, UK. ¹⁰⁷Royal Brompton and Harefield Hospitals, Harefield, UK. ¹⁰⁸Cambridge Stem Cell Institute, University of Cambridge, Cambridge, UK. ¹⁰⁹Maidstone and Tunbridge Wells NHS Trust, Royal Tunbridge Wells, UK. ¹¹⁰Norfolk County Council, Norfolk, UK. ¹¹¹Institute of Biodiversity, Animal Health & Comparative Medicine, Glasgow, UK. ¹¹²Great Ormond Street Institute of Child Health (GOS ICH), University College London (UCL), London, UK. ¹¹³Department of Microbiology, South West London Pathology, London, UK. ¹¹⁴Cambridge University Hospitals NHS Foundation Trust, Cambridge, UK. ¹¹⁵Microbiology, Royal Oldham Hospital, Oldham, UK. ¹¹⁶Heartlands Hospital, Birmingham, Birmingham, UK.