



King's Research Portal

DOI:

[10.1109/TASC.2023.3338584](https://doi.org/10.1109/TASC.2023.3338584)

Document Version

Other version

[Link to publication record in King's Research Portal](#)

Citation for published version (APA):

Ainslie, M., Baig, T., & Jiang, Z. (2024). An LTspice Electrical Circuit Model of the HTS Dynamo. *IEEE Transactions on Applied Superconductivity*, 34(3), Article 8800104. <https://doi.org/10.1109/TASC.2023.3338584>

Citing this paper

Please note that where the full-text provided on King's Research Portal is the Author Accepted Manuscript or Post-Print version this may differ from the final Published version. If citing, it is advised that you check and use the publisher's definitive version for pagination, volume/issue, and date of publication details. And where the final published version is provided on the Research Portal, if citing you are again advised to check the publisher's website for any subsequent corrections.

General rights

Copyright and moral rights for the publications made accessible in the Research Portal are retained by the authors and/or other copyright owners and it is a condition of accessing publications that users recognize and abide by the legal requirements associated with these rights.

- Users may download and print one copy of any publication from the Research Portal for the purpose of private study or research.
- You may not further distribute the material or use it for any profit-making activity or commercial gain
- You may freely distribute the URL identifying the publication in the Research Portal

Take down policy

If you believe that this document breaches copyright please contact librarypure@kcl.ac.uk providing details, and we will remove access to the work immediately and investigate your claim.

An LTspice Electrical Circuit Model of the HTS Dynamo

Mark D. Ainslie, *Senior Member, IEEE*, Tayyab Baig, and Zhenan Jiang, *Senior Member, IEEE*

Abstract—The high-temperature superconducting (HTS) dynamo enables injection of large DC currents into a superconducting coil, without the need for bulky and thermally-inefficient current leads. For practical applications of such technology – like energizing superconducting coils in superconducting rotating machines and NMR/MRI magnets – modelling and understanding the behavior while charging a coil is of great interest. From an electrical circuit point of view, the HTS dynamo can be modelled as a current-controlled voltage source in series with an effective (internal) resistance. The overall charging curves of a coil by an HTS dynamo can be accurately (and quickly, in seconds or less) predicted using such an electrical circuit model by connecting an RL load representing a coil and any circuit resistance. In this work, an electrical circuit model of the HTS dynamo built in the circuit simulation software LTspice is described. The model is then used to simulate the charge of an HTS coil under different practical scenarios, and the results validated against both numerical and experimental results published in the literature.

Index Terms—High-temperature superconductivity, HTS dynamo, HTS modelling, electrical circuit model, flux pump, superconducting coil charging

I. INTRODUCTION

THE high-temperature superconducting (HTS) dynamo enables injection of large DC currents into a superconducting coil, without the need for bulky and thermally-inefficient current leads. Because of this important advantage, there is significant interest in using such technology to energise superconducting coils in superconducting rotating machines [1], [2], [3], [4], [5] and NMR/MRI magnets [6], [7].

In recent years, several different numerical models of the HTS dynamo have been developed and have played a key role in elucidating the underlying physics of such devices. Such models also provide useful, cost-effective tools to optimise and improve HTS dynamo designs [8]. For practical applications of such technology, modelling, understanding and predicting the behaviour while charging a coil is of great interest

Manuscript receipt and acceptance dates will be inserted here. This work was supported in part by the New Zealand Ministry of Business, Innovation and Employment (MBIE) Strategic Science Investment Fund “Advanced Energy Technology Platforms” under Contract No. RTVU2004. (Corresponding author: Mark D. Ainslie.)

M. D. Ainslie and T. Baig are with the Department of Engineering, King’s College London, London WC2R 2LS, U.K. (e-mail: mark.ainslie@kcl.ac.uk).

Z. Jiang is with the Paihau-Robinson Research Institute, Victoria University of Wellington, Lower Hutt 5010, New Zealand (e-mail: zhenan.jiang@vuw.ac.nz).

Color versions of one or more of the figures in this paper are available online at <http://ieeexplore.ieee.org>.

Digital Object Identifier will be inserted here upon acceptance.

[5], [9], [10], [11]. Coupled numerical models have been developed for this purpose [9], [11]; however, such models can require extensive computational time because the full charging process may require 1000s of cycles of rotation.

From an electrical circuit point of view, the HTS dynamo can be modelled as a current-controlled voltage source in series with an effective (internal) resistance [12], [13]. The overall charging curves of a coil by an HTS dynamo can be accurately (and quickly, in seconds or less) predicted using such an electrical circuit model by connecting an RL load representing a coil and any circuit resistance, e.g., the resistance of soldered joints.

In this work, an electrical circuit model of the HTS dynamo built in the circuit simulation software LTspice [14] is described. The model is then used to simulate the charge of an HTS coil under different practical scenarios, with the results validated against both numerical and experiment results published in the literature. Section II describes the general electrical circuit model and then the implementation of this model in LTspice. Section III validates the results of the model against the analytical results presented by Ghabeli *et al.* in [9], based on the assumptions of the HTS dynamo benchmark problem [15] applied to charging a load HTS coil. Section IV validates the results of the model against the experimental results reported by Jiang *et al.* in [12].

II. ELECTRICAL CIRCUIT MODELS OF HTS DYNAMO COIL CHARGING

A. General Electrical Circuit Model

Fig. 1 shows an equivalent electrical circuit model of an HTS dynamo, represented by a DC voltage source V_{oc} and effective (internal) resistance R_{int} , connected to a load HTS coil, represented by an inductance L_{sc} and equivalent (variable) resistance R_{sc} . R_c represents the circuit resistance, e.g., the resistance of soldered joints connecting the HTS dynamo to the load HTS coil.

For an ideal coil and/or assuming the circuit current $I(t) \ll I_{c,coil}$, the critical current of the load HTS coil, R_{sc} can be neglected (see Section III). In this case, $I(t)$ is limited by the maximum value of current that the HTS dynamo can deliver [9]. The current flowing in the circuit can then be calculated by

$$I(t) = I_{\text{sat}}[1 - e^{-t/\tau}] \quad (1)$$

where $I_{\text{sat}} = V_{\text{oc}} / (R_c + R_{\text{int}})$ is the saturation current and $\tau = L_{\text{sc}} / (R_c + R_{\text{int}})$ is the time constant of the circuit, which determines its charging rate.

To consider saturation of the current when limited by $I_{\text{c,coil}}$ (see Section IV), the equivalent (variable) resistance R_{sc} can be included, which can be determined from the measured current-voltage relationship, $V_{\text{coil}}(I)$, for the coil, as described in [12].

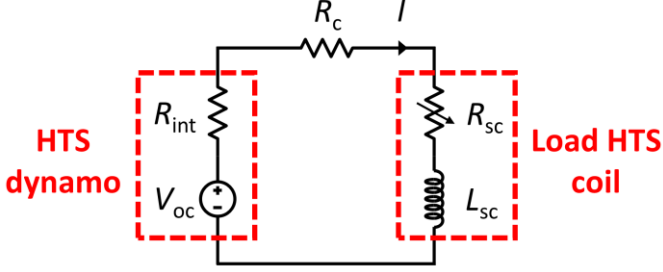


Fig. 1. Equivalent electrical circuit model of an HTS dynamo, represented by a DC voltage source V_{oc} and effective (internal) resistance R_{int} , connected to a load HTS coil, represented by an inductance L_{sc} and equivalent (variable) resistance R_{sc} . R_c represents the circuit resistance, e.g., the resistance of soldered joints.

B. LTspice Model

LTspice has been previously used successfully to model the HTS transformer-rectifier flux pump in [16], [17]. Fig. 2 shows the LTspice implementation used here in this work of the equivalent electrical circuit model in Fig. 1.

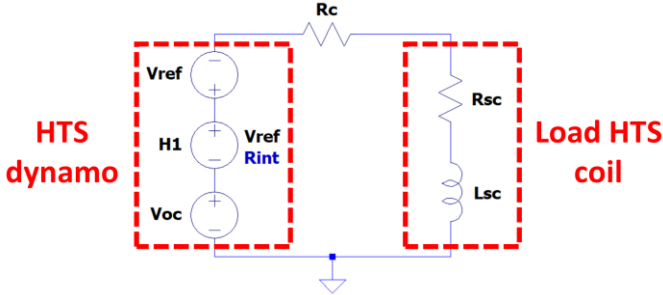


Fig. 2. LTspice implementation of the equivalent electrical circuit model shown in Fig. 1.

The HTS dynamo is represented using three voltage sources. Firstly, V_{oc} is a DC voltage source with a voltage value set to the open-circuit voltage, V_{oc} , from the dynamo's I - V curve (note this circuit element's series resistance is set to 0Ω). Next, $H1$ is a current-controlled voltage source. This circuit element applies a voltage between its nodes equal to the value of its transresistance (input as $-R_{\text{int}}$) times the current flowing through the voltage source V_{ref} which here acts as a reference (or dummy) voltage source for this purpose. R_c is simply a resistor (representing the circuit resistance). Finally,

R_{sc} and L_{sc} are a resistor and inductor representing the equivalent (variable) resistance and the inductance of the load HTS coil, respectively.

III. VALIDATION AGAINST BENCHMARK PROBLEM

To validate the LTspice model, we first compare the results of the model with the results presented in [9]. In [9], the I - V curves of the modelled HTS dynamo – based on the assumptions of the HTS dynamo benchmark problem [15] – are calculated using two numerical modelling frameworks (MEMEP and the segregated H -formulation). These curves then provide the parameters V_{oc} and R_{int} for the equivalent electrical circuit model.

Table I summarises these parameters (V_{oc} , R_{int}) as calculated in [9] for an HTS dynamo airgap of 3.7 mm and rotation frequencies of 4.25, 25 and 50 Hz. An ideal HTS coil is assumed with $L = 0.24$ mH (and $R_{\text{sc}} = 0 \Omega$), and the circuit (joint) resistance $R_c = 0.88 \mu\Omega$. Also included in Table I are the calculated values for I_{sat} and τ for each frequency.

TABLE I. ASSUMED PARAMETERS FOR VALIDATION AGAINST THE BENCHMARK PROBLEM IN [9]

HTS dynamo	4.25 Hz	V_{oc}	10.177 μV
		R_{int}	0.324 $\mu\Omega$
		I_{sat}	8.45 A
		τ	199.34 s
	25 Hz	V_{oc}	59.219 μV
		R_{int}	1.7235 $\mu\Omega$
		I_{sat}	22.75 A
		τ	92.18 s
	50 Hz	V_{oc}	117.911 μV
R_{int}		3.3415 $\mu\Omega$	
I_{sat}		27.93 A	
τ		56.85 s	
Load HTS coil	Inductance, L_{sc}		0.24 mH
	Resistance, R_{sc}		0 Ω
Circuit (joint) resistance, R_{c}			0.88 $\mu\Omega$

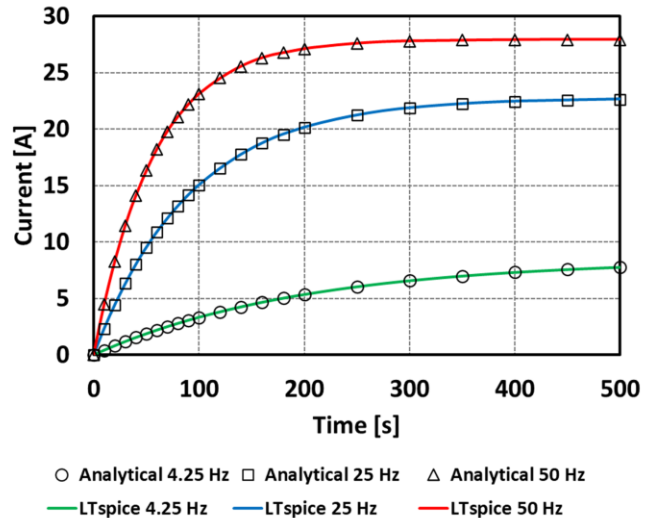


Fig. 3. The calculated charging current curves of the HTS coil in LTspice, compared with the results from the analytical equation (1), for three HTS dynamo frequencies of 4.25, 25 and 50 Hz, and an airgap of 3.7 mm.

Fig. 3 shows a comparison of the calculated charging current curves of the HTS coil in LTspice and the results of the analytical equation (1), for three HTS dynamo frequencies of 4.25, 25 and 50 Hz, and an airgap of 3.7 mm. There is excellent agreement between these two methods.

IV. VALIDATION AGAINST EXPERIMENTAL RESULTS

To validate the LTspice model further, we now modify the assumed model parameters to enable a comparison with the experimental results reported in [12]. Firstly, we calculate the parameters V_{oc} and R_{int} for the experimental HTS dynamo – which consists of two co-aligned circular arrays of 12 N38 NdFeB permanent magnets that rotate past a single HTS wire – for rotation frequencies of 48, 192 and 600 Hz, from the I - V curves measured in [12]. These parameters are listed in Table II. In addition, the experimental HTS coil has an inductance $L = 2.4$ mH, and to take into account the limitation of the coil due to its critical current $I_{c,coil}$ via its equivalent resistance R_{sc} . R_{sc} is calculated using the measured I - V curve of the load HTS coil in [12], shown in Fig. 4(a), which is fitted in Fig. 4(b) using the function:

$$R_{sc}(I) = R_0(I/I_{c,coil})^n \quad (2)$$

where R_0 is the equivalent resistance at the critical current, $I_{c,coil}$ is the measured critical current, and n represents the steepness of the transition between the superconducting and normal state. Since the coil length is 4000 cm, for a characteristic electric field of $1 \mu\text{V}/\text{cm}$, the corresponding voltage is $4000 \mu\text{V}$, which in turn corresponds to $I_{c,coil} = 55.315$ A. Thus, $R_0 = 72.3 \mu\Omega$, and trial and error found $n = 35$ to fit the curve best. R_{sc} is programmed into the circuit element **Rsc** in the LTspice circuit as $R = 7.23e-5 * (I(Vref)/55.315)^{35}$. Finally, the circuit resistance R_c is the same as Section III.

TABLE II.
ASSUMED PARAMETERS FOR VALIDATION
AGAINST THE EXPERIMENTAL RESULTS IN [12]

HTS dynamo	48 Hz	V_{oc}	0.75 mV
		R_{int}	13.2 $\mu\Omega$
		I_{sat}	56.9 A
		τ	170.5 s
	192 Hz	V_{oc}	2.84 mV
		R_{int}	45.6 $\mu\Omega$
		I_{sat}	62.3 A
		τ	51.6 s
	600 Hz	V_{oc}	8.45 mV
		R_{int}	130.8 $\mu\Omega$
		I_{sat}	64.8 A
		τ	18.2 s
Load HTS coil	Inductance, L_{sc}		2.4 mH
	Resistance, R_{sc}		See Fig. 4(b)
Circuit (joint) resistance, R_c			0.88 $\mu\Omega$

Fig. 5 shows a comparison of the calculated charging current curves of the HTS coil in LTspice and the experimental results reported in [12], for three HTS dynamo frequencies of

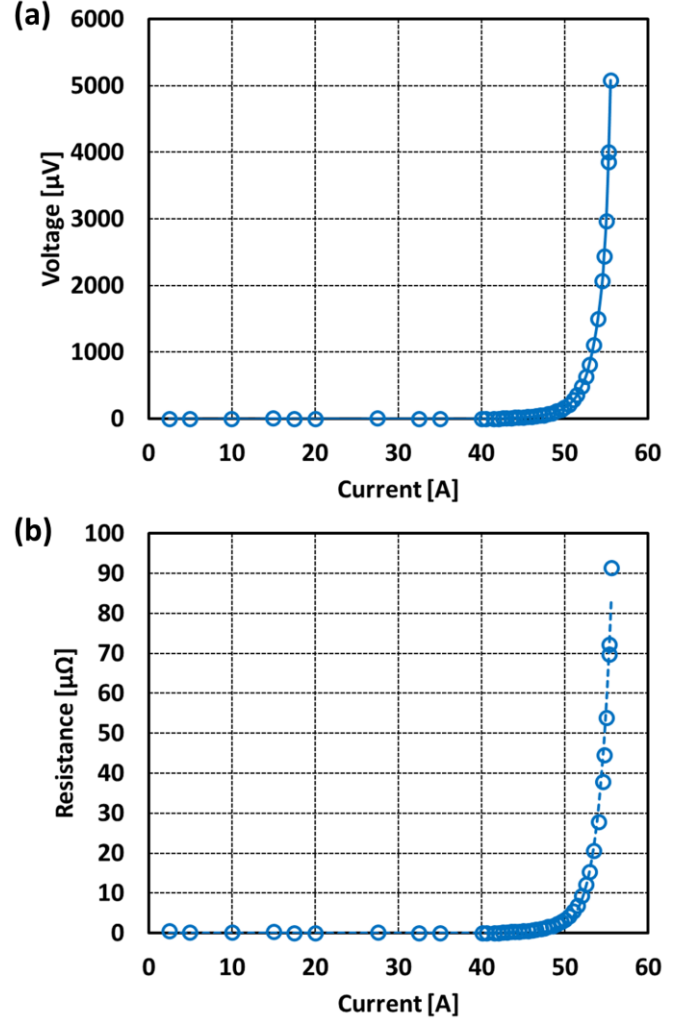


Fig. 4. (a) Measured I - V curve of the load HTS coil in [12], (b) Calculated (open symbols) and fitted (dashed line) equivalent resistance for the coil, used as R_{sc} in the equivalent circuit (see Fig. 1) and LTspice model.

48, 192 and 600 Hz. For all frequencies, there is excellent agreement between the LTspice model and experimental results for much of the charging curves, until the current approaches the saturation current of the circuit. For the lowest frequency (48 Hz), there is also excellent agreement as the current saturates; however, for the higher frequencies (192, 600 Hz), the LTspice model tends to under-estimate the saturation current by a few ampere.

One possible explanation for this is that simply treating the resistive voltage of the load HTS coil as a resistor based on its measured I - V curve may not be wholly appropriate, especially at higher frequencies. Since the coil's I - V curve is obtained from a DC measurement, some frequency scaling may be required to take into account any frequency dependence of the critical current [18] and hence the coil's equivalent resistance. However, in this case – where the HTS dynamo is charging a load HTS coil – the current waveform is not a simple sinusoid like that analysed in [18]. The charging current curves shown in Figs. 3 and 5 actually contain ripples within each cycle, as described in detail in [9], which cannot be easily captured via analytical methods or electrical circuit modelling. This is be-

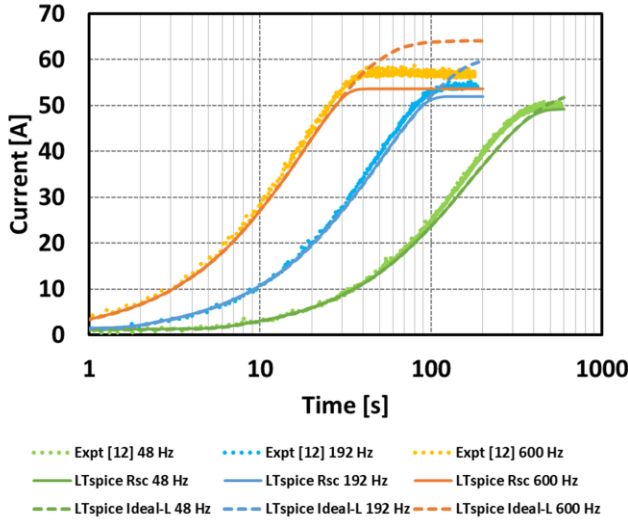


Fig. 5. The calculated charging current curves of the HTS coil in LTspice, compared with the experimental results reported in [12], for three HTS dynamo frequencies of 48, 192 and 600 Hz.

yond the scope of this paper, but is to be investigated in future work.

For reference, the current charging curves when treating the load HTS coil as ideal (as per Section III, where $R_{sc} = 0$) are also included in Fig. 5 as dashed-line curves. In this case, the circuit is limited by the maximum value of current that the HTS dynamo can deliver, and it is clear that the LTspice model will significantly over-estimate the saturation current. This indicates the need for the inclusion of the equivalent (variable) resistance R_{sc} when saturation of the current is limited by $I_{c,coil}$.

V. CONCLUSION

The overall charging curves of a load HTS coil by an HTS dynamo can be accurately (and quickly, in seconds or less) predicted using an electrical circuit model. In this work, an electrical circuit model of the HTS dynamo – which can be modelled as a current-controlled voltage source in series with an effective (internal) resistance – is built in the circuit simulation software LTspice.

The model is firstly validated against the analytical results presented by Ghabeli *et al.* in [9], where an ideal HTS coil is assumed, and excellent agreement is obtained. Next, the model is validated against the experimental results by Jiang *et al.* in [12], where an equivalent (variable) resistance R_{sc} of the load HTS coil is included in the electrical circuit to take into account the limitation of the coil due to its critical current $I_{c,coil}$. The model shows excellent agreement for much of the charging curves, but tends to under-estimate the saturation current by a few ampere for higher rotation frequencies. To improve the model's accuracy, future work should investigate frequency scaling of R_{sc} to consider the ripples contained in the charging current curves contained within each cycle.

VI. DATA STATEMENT

Data related to this publication are available at the King's Open Research Data System (KORDS):
<https://doi.org/10.18742/24018519>.

REFERENCES

- [1] C. W. Bumby *et al.*, "Development of a brushless HTS exciter for a 10 kW HTS synchronous generator," *Supercond Sci Technol.*, vol. 29, no. 2, 2016, Art. No. 024008.
- [2] J. H. Kim *et al.*, "Fabrication and performance testing of a 1-kW-class high-temperature superconducting generator with a high-temperature superconducting contactless field exciter," *Supercond. Sci. Technol.*, vol. 33, no. 9, 2020, Art. No. 095003.
- [3] H. J. Sung *et al.*, "Design of a 12-MW HTS wind power generator including a flux pump exciter," *IEEE Trans. Appl. Supercond.*, vol. 26, no. 3, Apr. 2016, Art. no. 5206205.
- [4] O. Tuvdensuren *et al.*, "Structural design and heat load analysis of a flux pump-based HTS module coil for a large-scale wind power generator," *J. Phys.: Conf. Ser.*, vol. 1054, 2018, Art. no. 012084.
- [5] G. Russo and A. Morandi, "A numerical study on the energization of the field coils of a full-size wind turbine with different types of flux pumps," *Energies*, vol. 15, no. 15, 2022, Art. no. 5392.
- [6] R. M. Walsh, R. Slade, D. Pooke, C. Hoffmann, "Characterization of current stability in an HTS NMR system energized by an HTS flux pump," *IEEE Trans. Appl. Supercond.*, vol. 24, no. 3, Jun. 2014, Art. no. 4600805.
- [7] Z. Bai *et al.*, "A novel high temperature superconducting magnetic flux pump for MRI magnets," *Cryogenics*, vol. 50, no. 10, pp. 688–692, 2010.
- [8] M. D. Ainslie, "Numerical modelling of high-temperature superconducting dynamos," *Superconductivity*, vol. 5, 2023, Art. no. 100033.
- [9] A. Ghabeli *et al.*, "Modeling the charging process of a coil by an HTS dynamo-type flux pump," *Supercond. Sci. Technol.*, vol. 34, no. 8, 2021, Art. no. 084002.
- [10] P. Zhou *et al.*, "Charging process simulation of a coil by a self-regulating high- T_c superconducting flux pump," *Superconductivity*, at press.
- [11] P. Zhou, A. Ghabeli, F. Grilli, M. Ainslie, "Modelling the dynamic charging process of high- T_c coils by dynamo-type flux pump." 8th International Workshop on Numerical Modelling of High Temperature Superconductors, Nancy, France, 14–16 Jun. 2022.
- [12] Z. Jiang *et al.*, "Dynamic resistance of a high- T_c superconducting flux pump," *Appl. Phys. Lett.*, vol. 105, no. 11, 2014, Art. no. 112601.
- [13] R. Mataira *et al.*, "Mechanism of the high- T_c superconducting dynamo: Models and Experiment," *Phys. Rev. Appl.*, vol. 14, no. 2, 2020, Art. no. 024012.
- [14] LTspice® [Online]. Available: <https://www.analog.com/en/design-center/design-tools-and-calculators/ltspice-simulator.html>
- [15] M. D. Ainslie *et al.*, "A new benchmark problem for electromagnetic modelling of superconductors: the high- T_c superconducting dynamo," *Supercond. Sci. Technol.*, vol. 33, no. 10, 2020, Art. no. 105009.
- [16] J. D. D. Gawith *et al.*, "A half-bridge HTS transformer-rectifier flux pump with two AC field-controlled switches," *Supercond. Sci. Technol.*, vol. 31, no. 8, 2018, Art. no. 085002.
- [17] J. Gawith *et al.*, "HTS transformer-rectifier flux pump optimization," *IEEE Trans. Appl. Supercond.*, vol. 29, no. 5, Aug. 2019, Art. no. 5501605.
- [18] K. P. Thakur *et al.*, "Frequency-dependent critical current and transport ac loss of superconductor strip and Roebel cable," *Supercond. Sci. Technol.*, vol. 24, no. 6, 2011, Art. no. 065024.