



King's Research Portal

DOI:

[10.1080/2162402X.2015.1032492](https://doi.org/10.1080/2162402X.2015.1032492)

Document Version

Publisher's PDF, also known as Version of record

[Link to publication record in King's Research Portal](#)

Citation for published version (APA):

Karagiannis, P., Villanova, F., Josephs, D. H., Correa, I., Van Hemelrijck, M., Hobbs, C., Saul, L., Egbuniwe, I. U., Tosi, I., Ilieva, K. M., Kent, E., Calonje, E., Harries, M., Fentiman, I., Taylor-Papadimitriou, J., Burchell, J., Spicer, J. F., Lacy, K. E., Nestle, F. O., & Karagiannis, S. N. (2015). Elevated IgG4 in patient circulation is associated with the risk of disease progression in melanoma. *Oncotimmunology*, 4(11), e1032492. <https://doi.org/10.1080/2162402X.2015.1032492>

Citing this paper

Please note that where the full-text provided on King's Research Portal is the Author Accepted Manuscript or Post-Print version this may differ from the final Published version. If citing, it is advised that you check and use the publisher's definitive version for pagination, volume/issue, and date of publication details. And where the final published version is provided on the Research Portal, if citing you are again advised to check the publisher's website for any subsequent corrections.

General rights

Copyright and moral rights for the publications made accessible in the Research Portal are retained by the authors and/or other copyright owners and it is a condition of accessing publications that users recognize and abide by the legal requirements associated with these rights.

- Users may download and print one copy of any publication from the Research Portal for the purpose of private study or research.
- You may not further distribute the material or use it for any profit-making activity or commercial gain
- You may freely distribute the URL identifying the publication in the Research Portal

Take down policy

If you believe that this document breaches copyright please contact librarypure@kcl.ac.uk providing details, and we will remove access to the work immediately and investigate your claim.

Elevated IgG4 in patient circulation is associated with the risk of disease progression in melanoma

Panagiotis Karagiannis, Federica Villanova, Debra H Josephs, Isabel Correa, Mieke Van Hemelrijck, Carl Hobbs, Louise Saul, Isioma U Egbuniwe, Isabella Tosi, Kristina M Ilieva, Emma Kent, Eduardo Calonje, Mark Harries, Ian Fentiman, Joyce Taylor-Papadimitriou, Joy Burchell, James F Spicer, Katie E Lacy, Frank O Nestle & Sophia N Karagiannis

To cite this article: Panagiotis Karagiannis, Federica Villanova, Debra H Josephs, Isabel Correa, Mieke Van Hemelrijck, Carl Hobbs, Louise Saul, Isioma U Egbuniwe, Isabella Tosi, Kristina M Ilieva, Emma Kent, Eduardo Calonje, Mark Harries, Ian Fentiman, Joyce Taylor-Papadimitriou, Joy Burchell, James F Spicer, Katie E Lacy, Frank O Nestle & Sophia N Karagiannis (2015) Elevated IgG4 in patient circulation is associated with the risk of disease progression in melanoma, *Oncoimmunology*, 4:11, e1032492, DOI: [10.1080/2162402X.2015.1032492](https://doi.org/10.1080/2162402X.2015.1032492)

To link to this article: <http://dx.doi.org/10.1080/2162402X.2015.1032492>



© 2015 The Author(s). Published with license by Taylor & Francis© Panagiotis Karagiannis, Federica Villanova, Debra



View supplementary material [↗](#)



H Josephs, Isabel Correa, Mieke Van Hemelrijck, Carl Hobbs, Louise Saul, Isioma U Egbuniwe, Isabella Tosi, Kristina M Ilieva, Emma Kent, Eduardo Calonje, Mark Harries, Ian Fentiman, Joyce Taylor-Papadimitriou, Joy Burchell, James F Spicer, Katie E Lacy, Frank O Nestle, and Sophia N Karagiannis



Submit your article to this journal [↗](#)



Article views: 365



View related articles [↗](#)



View Crossmark data [↗](#)

Elevated IgG4 in patient circulation is associated with the risk of disease progression in melanoma

Panagiotis Karagiannis^{1,2}, Federica Villanova¹, Debra H Josephs^{1,3}, Isabel Correa¹, Mieke Van Hemelrijck⁴, Carl Hobbs⁵, Louise Saul^{1,3}, Isioma U Egbuniwe¹, Isabella Tosi¹, Kristina M Ilieva^{1,6}, Emma Kent¹, Eduardo Calonje⁷, Mark Harries⁸, Ian Fentiman³, Joyce Taylor-Papadimitriou³, Joy Burchell³, James F Spicer³, Katie E Lacy^{1,7}, Frank O Nestle¹, and Sophia N Karagiannis^{1,*}

¹St. John's Institute of Dermatology; Division of Genetics and Molecular Medicine; Faculty of Life Sciences and Medicine; King's College London & NIHR Biomedical Research Centre at Guy's and St. Thomas' Hospitals and King's College London; Guy's Hospital; King's College London; London, UK; ²University Hospital of Hamburg Eppendorf; Department of Oncology; Hematology and Stem Cell Transplantation; Hamburg, Germany; ³Department of Research Oncology; Division of Cancer Studies; Faculty of Life Sciences and Medicine; King's College London; Guy's Hospital; London, UK; ⁴King's College London; Faculty of Life Sciences and Medicine; Division of Cancer Studies; Cancer Epidemiology Group; Guy's Hospital; London, UK; ⁵Wolfson Center for Age-Related Diseases; King's College London; London, UK; ⁶Breakthrough Breast Cancer Research Unit; Department of Research Oncology; Guy's Hospital; King's College London School of Medicine; London, United Kingdom; ⁷Skin Tumor Unit; St. John's Institute of Dermatology; Guy's Hospital, King's College London and Guy's and St Thomas' NHS Trust; London, UK; ⁸Clinical Oncology; Guy's and St. Thomas's NHS Foundation Trust, London, UK

Keywords: B cells, biomarker, cancer inflammation, humoral response, immunomodulation, immunomonitoring, immunosuppression, IgG4, melanoma, prognosis

Abbreviations: LDH, lactate dehydrogenase; CTC, circulating tumor cell; SD, stable disease; PD, progressive disease; Treg, regulatory T cell; CRP, C-reactive protein; WBC, white blood cell count; ROC, receiver operating characteristic; AUC, area under the curve; PFS, progression-free survival (PFS); OS, overall survival; HR, hazard ratio; CI, confidence interval; SNB, sentinel lymph node biopsy; TMA, tissue microarray; PBMC, peripheral blood mononuclear cells

Emerging evidence suggests pathological and immunoregulatory functions for IgG4 antibodies and IgG4⁺ B cells in inflammatory diseases and malignancies. We previously reported that IgG4 antibodies restrict activation of immune effector cell functions and impair humoral responses in melanoma. Here, we investigate IgG4 as a predictor of risk for disease progression in a study of human sera (n = 271: 167 melanoma patients; 104 healthy volunteers) and peripheral blood B cells (n = 71: 47 melanoma patients; 24 healthy volunteers). IgG4 (IgG4/IgG_{total}) serum levels were elevated in melanoma. High relative IgG4 levels negatively correlated with progression-free survival (PFS) and overall survival. In early stage (I–II) disease, serum IgG4 was independently negatively prognostic for progression-free survival, as was elevation of IgG4⁺ circulating B cells (CD45⁺CD22⁺CD19⁺CD3⁻CD14⁻). In human tissues (n = 256; 108 cutaneous melanomas; 56 involved lymph nodes; 60 distant metastases; 32 normal skin samples) IgG4⁺ cell infiltrates were found in 42.6% of melanomas, 21.4% of involved lymph nodes and 30% of metastases, suggesting inflammatory conditions that favor IgG4 at the peripheral and local levels. Consistent with emerging evidence for an immunosuppressive role for IgG4, these findings indicate association of elevated IgG4 with disease progression and less favorable clinical outcomes. Characterizing immunoglobulin and other humoral immune profiles in melanoma might identify valuable prognostic tools for patient stratification and in the future lead to more effective treatments less prone to tumor-induced blockade mechanisms.

Introduction

Malignant melanoma remains a potentially lethal skin cancer despite emerging targeted therapies.^{1–4} Approximately 20–50% of individuals diagnosed with early stage disease will develop metastases, yet current serum and histopathological evaluators are not linked to disease mechanisms and thus may not accurately predict

the risk of disease recurrence.⁴ Prognosis largely relies on histological evaluation of the primary lesion when available, including Breslow thickness, ulceration and mitotic rate, together with assessments of nodal involvement, all of which require invasive surgical interventions.⁵ While sentinel node biopsy has been demonstrated to provide valuable prognostic information, around 80% of patients have a negative test but may develop long-term

© Panagiotis Karagiannis, Federica Villanova, Debra H Josephs, Isabel Correa, Mieke Van Hemelrijck, Carl Hobbs, Louise Saul, Isioma U Egbuniwe, Isabella Tosi, Kristina M Ilieva, Emma Kent, Eduardo Calonje, Mark Harries, Ian Fentiman, Joyce Taylor-Papadimitriou, Joy Burchell, James F Spicer, Katie E Lacy, Frank O Nestle, and Sophia N Karagiannis

*Correspondence to: Sophia N Karagiannis; Email: sophia.karagiannis@kcl.ac.uk

Submitted: 02/27/2015; Revised: 03/14/2015; Accepted: 03/17/2015

<http://dx.doi.org/10.1080/2162402X.2015.1032492>

This is an Open Access article distributed under the terms of the Creative Commons Attribution License (<http://creativecommons.org/licenses/by/3.0/>), which permits unrestricted use, distribution, and reproduction in any medium, provided the original work is properly cited. The moral rights of the named author(s) have been asserted.

complications from surgery such as lymphoedema.⁶⁻⁸ Hence, alternative non-invasive indicators linked to a biological mechanism, such as induction of immune suppression by melanoma cells, would be highly valuable prognostic tools especially in early disease.

The only serological biomarker for melanoma recommended in the American Joint Committee on Cancer guidelines is lactate dehydrogenase (LDH).⁴ Elevated serum LDH levels are found in patients with progressive disease manifesting at later stages of melanoma. High serum LDH levels are indicative of active cell necrosis associated with high tumor burden and are linked to poor clinical responses to treatments.^{4,9,10} Serum biomarker candidates such as S-100B demonstrate high sensitivity and specificity in advanced disease, but have not yet been applied in routine clinical practice partly due to large variations among patient samples.¹¹ Detecting circulating tumor cells (CTCs) may also be indicative of active disease in patients with advancing and metastatic tumors, signifying a worse clinical prognosis; however large inter- and intra-patient variability in cancer cell antigen expression and large variations in CTC counts between blood draws represent significant limitations.¹²⁻¹⁴ Regardless, markers that are easily monitored (such as those in serum) and that may be directly linked to early disease pathogenesis or progression are desirable.¹⁵

Components of humoral immunity –including circulating antibodies– are emerging as biomarkers for autoimmune, inflammatory or allergic conditions and malignant disease. Monitoring antibodies in disease may provide 2 advantages: a) responses may occur at early points of pathogenesis indicating likely future disease onset or recurrence; and b) B cell differentiation, class-switching and antibody production are influenced by antigen recognition, or altered in response to inflammatory signals, with the resulting antibodies constituting a convenient readout. Protein array platforms like ‘immunosignature’ are now being developed to monitor circulating antibodies, and applications in Alzheimer’s disease and in cancer are emerging.^{16,17}

Consistent with the notion that components of the humoral response could be associated with malignancy, early data indicated that IgG4 antibody subclass serum levels are dysregulated in patients with melanoma.¹⁸ Pathogenic roles of IgG4 in inflammatory diseases and also in pancreatic cancers, extrahepatic cholangiocarcinomas, squamous cell carcinomas and melanomas have also been described. Pathological features include elevated or dysregulated IgG4 serum levels, tissue-resident IgG4⁺ immune cell infiltrates and associations with regulatory elements such as regulatory T cells (Tregs).¹⁸⁻²⁰ Additionally, correlations with inadequate immune responses to vaccines and with immune tolerance to allergen exposure following successful allergen immunotherapies have been reported.

We previously reported that despite the presence of a tumor-reactive mature humoral compartment in patients, production of IgG4 subclass antibodies may be favored in melanoma and that IgG4 may contribute to defective antitumor immune responses.²¹⁻²³ These findings mandate a closer examination of the clinical significance of this immunomodulatory antibody subclass, particularly its association with disease progression. Here, in a cohort of patients and healthy volunteers, we sought to examine the levels of circulating

IgG4 and IgG4⁺ B cells and determine if there is an association with disease progression in melanoma.

Results

Elevated IgG4 serum levels in patients predict the risk of disease progression and survival

In order to investigate circulating IgG4 in malignant disease, we analyzed sera from 167 patients with melanoma and from 104 healthy volunteers. Patient baseline characteristics are described in **Table S1** and the study design is described in **Figure 1**. Significantly elevated serum IgG4 levels (IgG4/IgG_{total}) were detected in melanoma patients (median 0.031; 95%[CI] 0.036–0.051) as compared to healthy controls (median 0.017; 95%[CI] 0.026–0.042; $P = 0.007$; **Figure 2A, left**). The absolute concentrations of IgG subclasses for each cohort are shown in **Figure 2A** (center and right). In order to study the association between the levels of IgG4 and disease progression, clinical data from 167 patient sera were analyzed by stratifying patients into those with stable disease (SD) and those with progressive disease (PD) during the study period. In early disease (Stages I–II) patients with SD during the study period displayed significantly lower serum levels of IgG4 (IgG4/IgG_{total}; median 0.023; 95%[CI] 0.024–0.044) as compared to patients who developed PD (median 0.039; 95%[CI] 0.030–0.0805; $P = 0.034$; **Figure 2B**). For all disease stages (Stages I–IV), patients with SD displayed significantly lower serum levels of IgG4 (IgG4/IgG_{total}; median 0.025; 95%[CI] 0.026–0.039) than patients who developed PD (median 0.037; 95%[CI] 0.038–0.065; $P = 0.0046$; **Figure 2B**). To exclude any effects introduced by infection or inflammation on IgG4 levels in this study, we further examined potential correlations between IgG4 with C-reactive protein (CRP) and white blood cell count (WBC). Neither WBC ($r = 0.07$; $P = 0.527$; $n = 83$) nor CRP ($r = 0.14$; $P = 0.331$; $n = 50$) correlated with IgG4 levels in this study cohort (**Fig. 2C**). Furthermore, in our patient cohort, the levels of serum IgG4 (IgG4/IgG_{total}) were not significantly different between non-allergic individuals and those with a history of allergies or patients with known drug intolerances (**Fig. 2C**).

Receiver operating characteristic (ROC) and area under the curve (AUC) analyses²⁴ indicated that elevated IgG4 could predict the risk of melanoma progression in local disease (mean AUC:0.65, $P = 0.034$ for Stages I–II) and overall (AUC:0.62, $P = 0.005$ for Stages I–IV) (**Figure S1A**). These findings suggest a prognostic value for IgG4 serum levels.

Since lactate dehydrogenase (LDH) is so far the only clinically-used serum biomarker used to predict disease progression,⁴ the potential of patient sera IgG4 and LDH levels to predict clinical outcomes were analyzed according to patient progression-free survival (PFS) and overall survival (OS). Based on ROC analysis, a threshold of 0.0345 for IgG4 was calculated via Youden’s Index²⁵ ($n = 91$ in IgG4^{low}, <0.034 ; $n = 76$ in IgG4^{high}, ≥ 0.034). Using this cutoff point, IgG4 had a sensitivity of 57.14% (95%[CI] 45.35%–68.37%) and a specificity of 68.89% (95%[CI] 58.26%–78.23%), giving a likelihood ratio of 1.73.

For analysis of LDH, samples were segregated into groups according to normal (240–480 mmol/L, $n = 140$) and abnormal (>480 mmol/L, $n = 18$) sera concentrations. The thresholds for IgG4 and LDH were subsequently used to analyze patient serum IgG4 and LDH (hazard ratios, HR) for PFS and OS using multivariate analysis (Fig. 2D). Kaplan-Meier curve evaluations revealed that IgG4^{high} group displayed statistically significantly lower OS (HR 95%[CI] 1.90 (1.17–3.29); log-rank $P = 0.0116$) and lower PFS (HR 95%[CI] 2.01 (1.34–3.35); log-rank $P = 0.0016$) as compared to the IgG4^{low} group (Fig. 2D, top panel). Patients with abnormal LDH levels had lower OS (HR 95%[CI] 7.71 (56.68–723.3); log-rank $P < 0.0001$) and lower PFS (HR 95%[CI] 6.93 (43.34–427.5); log-rank $P < 0.0001$) as compared to those with normal LDH (Fig. 2D, bottom panel). These data support the value of both serum LDH and IgG4 in predicting overall disease outcomes in melanoma. Moreover, these findings are consistent with an association between immune evasion mechanisms, such as those that promote IgG4, with subsequent disease progression.

Age, sex and, when appropriate, stage-adjusted Hazard Ratios (HR) and 95% Confidence Intervals (CI) were calculated for the risk of progression-free survival. The adjusted HR for IgG4 was 1.23 (95%[CI] 0.76–1.98) versus 3.64 (95%[CI] 1.85–7.19) for LDH in Stage I–IV disease. In Stages III–IV, IgG4 had an adjusted HR of 0.99 (95%[CI] 0.55–1.77) whereas LDH had an adjusted HR of 5.47 (95%[CI] 2.47–10.92).

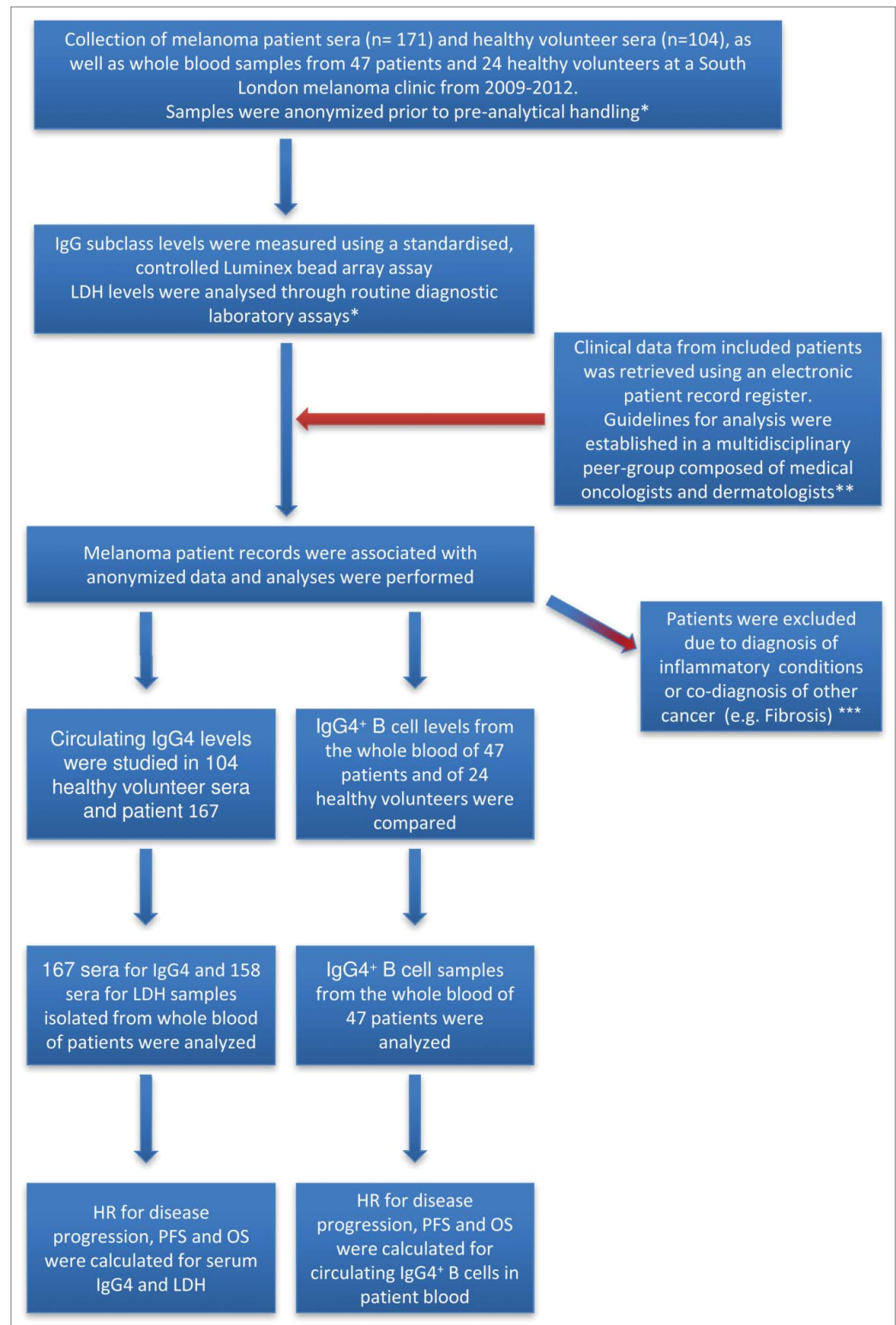


Figure 1. Experimental study design, collection and processing of clinical samples. Cohorts of 171 melanoma patients and 104 healthy volunteers were identified for evaluations of IgG4 and lactate dehydrogenase (LDH). IgG subclass levels were measured using a standardized Luminex bead array assay ($n = 171$) and in the same samples, LDH levels were analyzed through a diagnostic laboratory protocol ($n = 158$). *Researchers working on this study were blinded to prevent bias; **Two independent medical professionals, not involved in the quantification of IgG4 or LDH, evaluated patient information; ***Patients with co-morbidities that may influence IgG4 levels were excluded from the analysis.

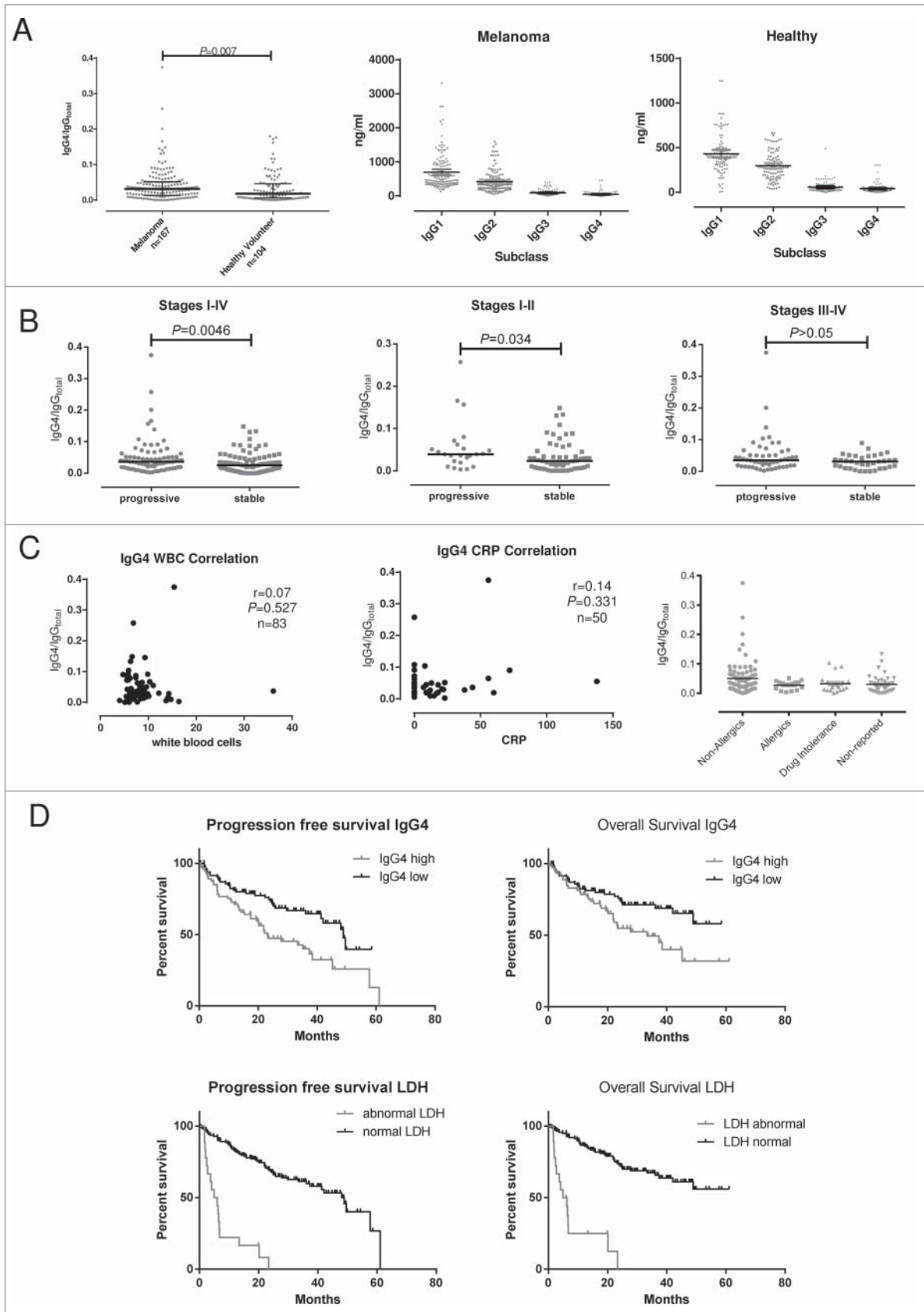


Figure 2. For figure legend, see next page.

However, in the sera of patients with Stage I–II melanoma, IgG4 had an adjusted HR of 2.46 (95%[CI] 1.01–6.02) for predicting progressive disease, whereas serum LDH had an adjusted HR of 12.29 (95%[CI] 1.18–128.00) (Table 1). In summary, these data confirm the prognostic value of LDH and indicate that IgG4 serum levels provide significant prognostic information in early stages (i.e., Stage I–II) of melanoma.

We next evaluated the prognostic potential of the combination of LDH and IgG4. When combined, these readouts had a higher prognostic value (AUC:0.67; $P = 0.0002$) than LDH (AUC:0.65; $P = 0.0017$) or IgG4 (AUC:0.60; $P = 0.0227$) individually (Fig. S1B).

Elevated levels of peripheral blood IgG4⁺ B cells predict the risk of disease progression in Stage I–II melanoma

Since serum IgG4 levels were predictive of the risk of disease progression in earlier stages (Stages I–II) of melanoma, we further examined patient and healthy volunteer peripheral blood for the presence of corresponding circulating IgG4⁺ B cells. The frequencies of circulating IgG4⁺ peripheral blood B cells (IgG4⁺CD45⁺CD22⁺CD19⁺CD3⁻CD14⁻) in melanoma patients with melanoma compared to those from healthy volunteers were determined by flow cytometric analyses (Fig. 3A). While there were no significant differences in the numbers of circulating B cells (CD45⁺CD22⁺CD19⁺CD3⁻CD14⁻) in the blood of patients with melanoma compared with healthy volunteers (Fig. 3A), the proportion of IgG4⁺ cells in the peripheral blood B cell compartment (CD45⁺CD22⁺CD19⁺CD3⁻CD14⁻) of melanoma patients was significantly elevated ($n = 47$; median 0.50; 95%[CI] 0.47–0.73) compared with that of healthy volunteers' ($n = 24$; median 0.2; 95%[CI] 0.13–0.37; Mann-Whitney-U-test; $P = 0.003$) (Fig. 3B). Furthermore, significantly (Kruskal–Wallis one-way analysis of variance with post-hoc Dunn's test) higher frequencies of circulating IgG4⁺ B cells were detected in the blood of patients with Stage I–II (median 0.50; 95%[CI] 0.44–0.72; $P < 0.001$; $n = 24$) and Stage III–IV (median 0.40; 95%[CI] 0.41–0.89; $P < 0.05$; $n = 23$) disease than those of healthy volunteers (median 0.2; 95%[CI] 0.13–0.37; $n = 24$) (Fig. 3B, right).

The frequencies of circulating IgG4⁺ B cells from patients with melanoma diagnosed at different disease stages were further analyzed to examine whether they could predict the risk of disease progression (Mann-Whitney-U-test; Fig. 3C). In the Stage I–II patient cohort, patients with stable disease had a statistically significantly lower frequency of IgG4⁺ B cells than patients who developed progressive disease (Stages I–II; AUC:0.81; $P = 0.014$; median of SD 0.30; 95%[CI] 0.17–0.56 *vs.* median of PD 0.70; 95%[CI] 0.50–0.95). There were no statistically significant differences between SD and PD patient groups in Stages III–IV (AUC:0.50; $P > 0.05$; median of SD 0.40; 95%[CI] 0.26–1.03 *vs.* median of PD 0.40; 95%[CI] 0.22–1.02) or in Stages I–IV (AUC:0.63; $P > 0.05$; median of SD 0.30; 95%[CI] 0.30–0.69 *vs.* median of PD 0.50; 95%[CI] 0.44–0.88).

Thus, similar to the prognostic value of elevated serum IgG4 levels in early stage (Stage I–II) melanoma, these data suggest that the IgG4⁺ B cell compartment is elevated in the circulation of patients as compared to healthy volunteers, and further, that elevated IgG4⁺ B cell frequencies are predictive of the risk of disease progression in Stage I–II melanoma.

IgG4⁺ cell infiltration in cutaneous melanomas of different thickness, disease stage and in distant metastases

In order to evaluate whether elevated serum IgG4 and circulating IgG4⁺ B cells in melanoma were also reflected by tumor IgG4⁺ cell infiltration, we performed immunohistochemical analyses of tissue microarrays ($n = 256$) for the presence of tissue-resident IgG4⁺ cells. IgG4⁺ cell infiltration was detected in a proportion of melanoma tumors. Levels of infiltration were found in melanoma skin lesions ($n = 108$), melanoma lymph node metastases ($n = 56$) and distant organ metastases ($n = 60$) but only low levels of infiltration were found in healthy skin ($n = 32$) specimens (examples in Fig. 4). IgG4 expression was detected in 42.60% (19.45% high positivity) of melanoma skin lesions, 21.40% (8.90% high positivity) of lymph node metastases and 30% (10% high positivity) of distant metastases. Low-grade positivity was found in a smaller proportion (12.25%) of healthy skin specimens (Fig. 5).

Similarly, IgG4⁺ cell infiltrates were observed in local and metastatic disease [(Stage I–II: 39.43% (16.90% high; 22.53%

Figure 2 (See previous page). Elevated serum levels of IgG4 in patient vs. healthy volunteer sera and IgG4 negatively correlates with risk of disease progression and survival. (A) Circulating IgG4 (IgG4/IgG4_{total}) serum levels in melanoma patients ($n = 167$) were significantly ($P = 0.007$) higher vs. IgG4 levels in healthy volunteer sera ($n = 104$). Statistical analysis was performed by Mann-Whitney U-Test; lines represent medians and error bars indicate interquartile range. Serum IgG subclass levels (ng/mL) for patients and healthy volunteer cohorts are shown in middle and right, respectively. (B) Comparative IgG4 serum level analyses among melanoma patients with subsequent stable (SD; $n = 90$) or progressive disease (PD; $n = 77$) in local (Stages I–II) and metastatic (Stages III–IV) disease and in the whole cohort (all stages). IgG4 levels were elevated in patients with subsequent PD compared to patients with SD during the study in the local disease setting ($P = 0.034$) and overall ($P = 0.0046$; Mann-Whitney-U-test). (C) Correlation analysis between IgG4 and white blood cell count (WBC, $r = 0.07$; $P = 0.527$; $n = 83$; Spearman correlation, left) or C-reactive protein (CRP, $r = 0.14$; $P = 0.331$; $n = 50$; Spearman correlation, middle) in melanoma patient blood. Circulating IgG4 (IgG4/IgG4_{total}) serum levels between patient groups with or without known allergies or known drug intolerances (right). (D) Evaluation of progression free survival (PFS) and overall survival (OS) in the melanoma patient cohort. Based on ROC analysis, a threshold value of 0.034 for IgG4 (calculated via the Youden's Index) was used to compare patient serum IgG4 and LDH hazard ratios (HR) for the risk of progression-free survival (PFS) and overall survival (OS). The cohort was analyzed using multivariate analysis. For LDH, samples were segregated into normal (240–480 mmol/L) and abnormal (>480 mmol/L) concentrations. Kaplan-Meier Curve evaluations revealed statistically significantly worse PFS (HR 95%[CI] 2.01 (1.34–3.35); log-rank $P = 0.0016$) and lower OS (HR 95%[CI] 1.90 (1.17–3.29); log-rank $P = 0.0116$) observed in the IgG4^{high} group compared to the IgG4^{low} group. Patients with abnormal LDH levels had lower PFS (HR 95%[CI] 6.93 (43.34–427.5); log-rank $P < 0.0001$) and lower OS (HR 95%[CI] 7.71 (56.68–723.3); log-rank $P < 0.0001$) vs. the LDH normal group.

Table 1. Clinical characteristics of the patient cohort, hazard ratio prediction calculations and correlations with serum IgG4 and LDH levels. Patients were categorized into 2 groups: those with low IgG4 levels (IgG4^{low}: IgG4/IgG_{total} <0.034; n = 91) and those with high IgG4 levels (IgG4^{high}: IgG4/IgG_{total} ≥0.034; n = 76), based on ROC analysis calculated via the Youden's Index. For LDH, samples were segregated into normal (240–480 mmol/L, n = 140) and abnormal (>480 mmol/L, n=18) concentrations. IgG4 predicted the risk of disease progression overall (combined Stages I–IV) as well as in local disease (Stages I–II). In contrast, LDH had a significant HR to predict the risk of disease progression overall (combined Stages I–IV). †: Age, sex, and when appropriate stage adjusted Hazard Ratios (HR) and 95% Confidence Intervals (CI) for risk of disease progression

Patient Cohort	IgG4 <0.034 (n=91)	IgG4 ≥0.034 (n=76)
Mean age ± SD†	57 ± 18	64 ± 16
Sex		
Male (%)	39 (42.85)	45 (59.21)
Female (%)	52 (57.15)	31 (40.79)
Mean Breslow ± SD	2.53 ± 2.24	3.36 ± 2.32
Disease Stage (%)		
I	28 (30.77)	7 (9.21)
II	18 (19.78)	26 (34.21)
III	24 (26.37)	24 (31.58)
IV	21 (23.08)	19 (25.00)
Ulceration (%)		
None	51 (56.04)	30 (39.47)
Present	17 (18.68)	30 (39.47)
Unknown	10 (25.28)	16 (21.06)
HR† (95%CI)		2.46 (1.01–6.02)
Stage I–II		0.99 (0.55–1.77)
Stage III–IV		1.23 (0.76–1.98)
Stage I–IV		
Patient Cohort	LDH (240–480) (n=140)	LDH >480 (n=18)
Mean age ± SD	59 ± 18	64 ± 15
Sex		
Male (%)	70 (50.00)	11 (58.82)
Female (%)	70 (50.00)	7 (41.18)
Mean Breslow ± SD	2.87 ± 2.38	3.01 ± 1.81
Disease Stage (%)		
I	33 (23.57)	0 (0)
II	41 (29.29)	1 (5.56)
III	43 (30.71)	2 (11.11)
IV	23 (16.43)	15 (83.33)
Ulceration (%)		
None	74 (55.04)	5 (27.78)
Present	38 (25.58)	7 (38.89)
Unknown	28 (19.38)	6 (33.33)
HR† (95%CI)		12.29 (1.18–128.00)
Stage I–II		5.47 (2.74–10.92)
Stage III–IV		3.64 (1.85–7.19)
Stage I–IV		

*SD: standard deviation.

†: Age, sex and, when appropriate, stage adjusted Hazard Ratio (HR) and 95% Confidence Intervals (CI) for risk of disease progression.

low); Stage III–IV: 40% (6.67% high; 33.33% low)]. IgG4⁺ cell infiltrates were also found in skin tumor lesions of different thicknesses [(T1–T2: 38.88% (33.33% high; 5.55% low); T3: 37.29% (27.29% high; 10% low); T4: 46.03% (15.87% high; 15.87% low)] (Fig. 5). These findings may signify that IgG4-attributed immunosuppressive functions may occur throughout malignant disease, irrespective of skin tumor thickness.

Taken together, these data further support the value of circulating IgG4 and IgG4⁺ B cells as negative prognostic indicators in melanoma. Furthermore, IgG4⁺ infiltration in melanoma lesions may indicate that immunomodulatory mechanisms favoring IgG4-biased inflammation may also be relevant in tumor microenvironments at different anatomic sites.

Discussion

We have previously reported the presence of IgG4⁺ infiltrating cells in melanoma tumors and the functional contributions of IgG4 in promoting tumor progression by impairing immunity. In the same study, preliminary evaluations of circulating IgG4 in sera from 33 melanoma patients a correlation between higher IgG4 levels and less favorable patient prognosis.²² We therefore wished to elucidate whether antibody selection profiles featuring biased production of IgG4 may be associated with disease progression among patients with local or metastatic melanoma.

In a 167 patient cohort, we found higher overall circulating IgG4 levels as compared to those from 104 healthy volunteer sera. Consistent with our prior study and in concordance with

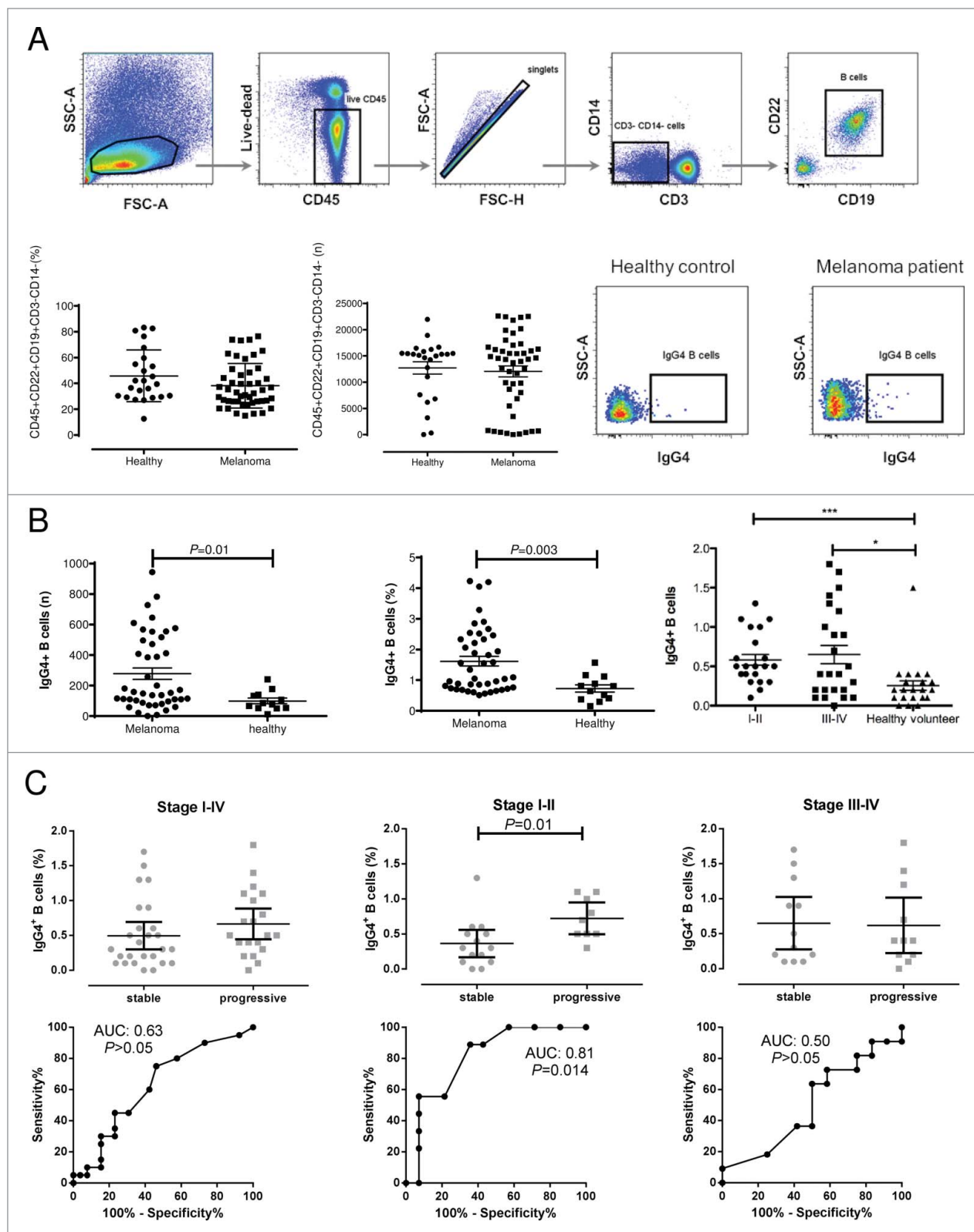


Figure 3. For figure legend, see next page.

published findings describing associations between inflammatory pathologies and malignant diseases, we confirm that elevated serum levels of IgG4 are negative predictors of progression-free and overall survival in patients with melanoma. Furthermore, our findings support the prognostic value of IgG4 in early stage (Stage I–II) melanoma, where an unmet need exists for predictors of disease progression.

Associations of elevated serum IgG4 levels with increased risk of disease progression at early stages are supported by an elevated circulating IgG4⁺ B cell subset that is also predictive of the risk of disease progression in early stages (Stage I–II). We speculate that temporal and memory IgG4-biased immunity may be early indicators of active immunosuppression and indicate worse clinical outcomes, consistent with previous evidence that IgG4 antibodies contribute to impairment of effective immune responses. Therefore, immunomonitoring of circulating memory class-switched IgG4⁺ B cells may complement temporal immune markers such as serum proteins, cytokines and autoantibodies. From a clinical perspective, predicting which patients originally diagnosed with localized melanoma will develop metastatic disease remains a clinical challenge. Novel indicators of disease progression are required to improve disease management, especially at early disease stages. Presently, invasive interventions such as sentinel lymph node biopsy (SNB) are used to elucidate disease stage, to predict the risk of progressive disease and identify treatment options. In the future, comparing the predictive value of SNB with serum readouts, such as circulating IgG4, may permit less intrusive clinical tools for patient management.

In our cohort, we confirm that the known serum biomarker LDH is an independent prognostic indicator in melanoma.^{9,26} However, elevated serum LDH levels may be associated with a range of non-neoplastic pathologies such as hemolysis, hepatitis, myocardial infarction, or infections, yielding false-positive results in melanoma.²⁶ Elevated serum IgG4 levels are also described in autoimmune pancreatitis, indicating that IgG4 may also be influenced by biological mechanisms unrelated to malignancy,²⁷ albeit only in a subset of patients. This limitation should be further investigated in future studies evaluating the clinical utility of serum IgG4 in melanoma.

Clinical practice has benefited by the companion diagnostic test for BRAF V600 mutations, used to select patients who may

benefit from targeted pathway inhibitor drugs like vemurafenib.²⁸ Based on emerging evidence that elements of the immune response play key roles in tumor surveillance and success of therapies,²⁹ it is possible that components of the immune system may become the next important source of tissue prognostic indicators. Infiltrating immune cells, including various B cell subsets in melanoma³⁰ and other solid tumors, may be indicative of the strength and nature of tumor immune responses and could be linked to specific clinical outcomes. Here, we observe a prominent IgG4⁺ cell infiltrate in a proportion of melanomas across tumor locations, tumor thicknesses and stages of disease. Together with elevated IgG4 serum levels and increased circulating IgG4⁺ B cells, this may indicate that immunosuppressive mechanisms are present and active at both the peripheral and local levels throughout disease stages. Although it was not feasible here to associate these infiltrates with patient history or clinical outcomes, in future studies IgG4⁺ infiltrates may be examined along with immune infiltrates associated with tumor-induced suppressive mechanisms, such as Tregs. Levels of IgG4⁺ cell infiltration may also be evaluated along with clinicopathological features such as ulceration and mitotic rate, or combined with other tissue markers such as S-100B.

Dysregulated antibody profiles are associated with a variety of inflammatory pathologies, including malignant melanoma and other types of cancer. The production of IgG4 subclass antibodies is promoted in IL-10-driven alternative T helper type 2 (Th2)-biased immune conditions and in response to prolonged antigen exposure. This results in class-switching and production of IgG4, a subclass known to trigger ineffective Fc-mediated cell activation due to distinctive conformation features.^{31,32} Melanoma tumor antigen-specific antibodies of the IgG4 isotype are less potent at engendering effector cell-mediated tumor cell killing *in vitro* and in restricting tumor growth *in vivo* as compared to IgG1. Importantly, both antigen-specific and nonspecific IgG4 antibodies can impair IgG1-mediated tumoricidal functions and this IgG4 blockade is mediated through interfering with IgG1 engaging activity at Fcγ receptors.^{22,33} Although tumor cell-reactive IgG4 antibodies have been detected both in patient circulation and in cutaneous melanoma lesions, Fc receptor binding and blockade of effector cell activation appears to form a key aspect of the immunomodulatory functions of IgG4.

Figure 3 (See previous page). Increased frequencies of peripheral blood IgG4⁺ B cells from melanoma patients compared to healthy volunteers. **(A)** Representative cytofluorimetric dot plots and flow cytometry gating strategy for evaluation of the circulating IgG4⁺ B cell compartment. Lymphoid cells were gated according to their FSC-A and SSC-A properties and viable CD45⁺ were selected and cell doublets excluded using FSC-A and FSC-H dot plots. CD3⁻CD14⁻ cells were selected and B cells identified as CD19⁺CD22⁺ cells (top panel). Although the overall number of circulating B cells did not differ significantly between melanoma patients and healthy volunteer samples (lower panel, left for % of total PBMCs and numbers of B cell events), the IgG4⁺ cells were selected from the CD45⁺CD22⁺CD19⁺CD3⁻CD14⁻ cell compartment. Representative dot plots depicting IgG4⁺ (CD45⁺CD22⁺CD19⁺CD3⁻CD14⁻) peripheral B cells from PBMCs of a healthy volunteer (middle) and of a melanoma patient (right) (lower panel). **(B)** Left and Middle: The number (left) and frequency (middle) of the IgG4⁺ peripheral B cell compartment (based on counted CD45⁺CD22⁺CD19⁺CD3⁻CD14⁻ cells) of 24 healthy volunteer and 47 melanoma patient samples showed statistically significantly higher levels of IgG4⁺ B cells in the patient group (Mann-Whitney-U-test; $P = 0.01$; $P = 0.003$); Right: IgG4⁺ B cell frequencies differed significantly between Stages I–II ($n = 24$; *** $P < 0.001$) or Stage III–IV ($n = 23$; * $P < 0.05$) vs. healthy volunteers ($n = 24$). Statistical analysis was performed by Kruskal-Wallis one-way analysis of variance with post-hoc Dunn's test; lines represent medians and error bars indicate interquartile range. **(C)** Frequency of circulating IgG4⁺ B cells from patients with local (Stages I–II) or metastatic (Stages III–IV) melanoma and correlation with risk of disease progression. Statistical analysis was performed by Mann-Whitney-U-test; lines represent medians and error bars indicate interquartile range. Corresponding ROC analyses are depicted directly underneath each column graph. In the Stage I–II patient cohort, patients with stable disease had a significantly lower frequency of IgG4⁺ B cells vs. patients with progressive disease (* $P = 0.014$). For this cohort, a median AUC of 0.81 was calculated by ROC analysis.

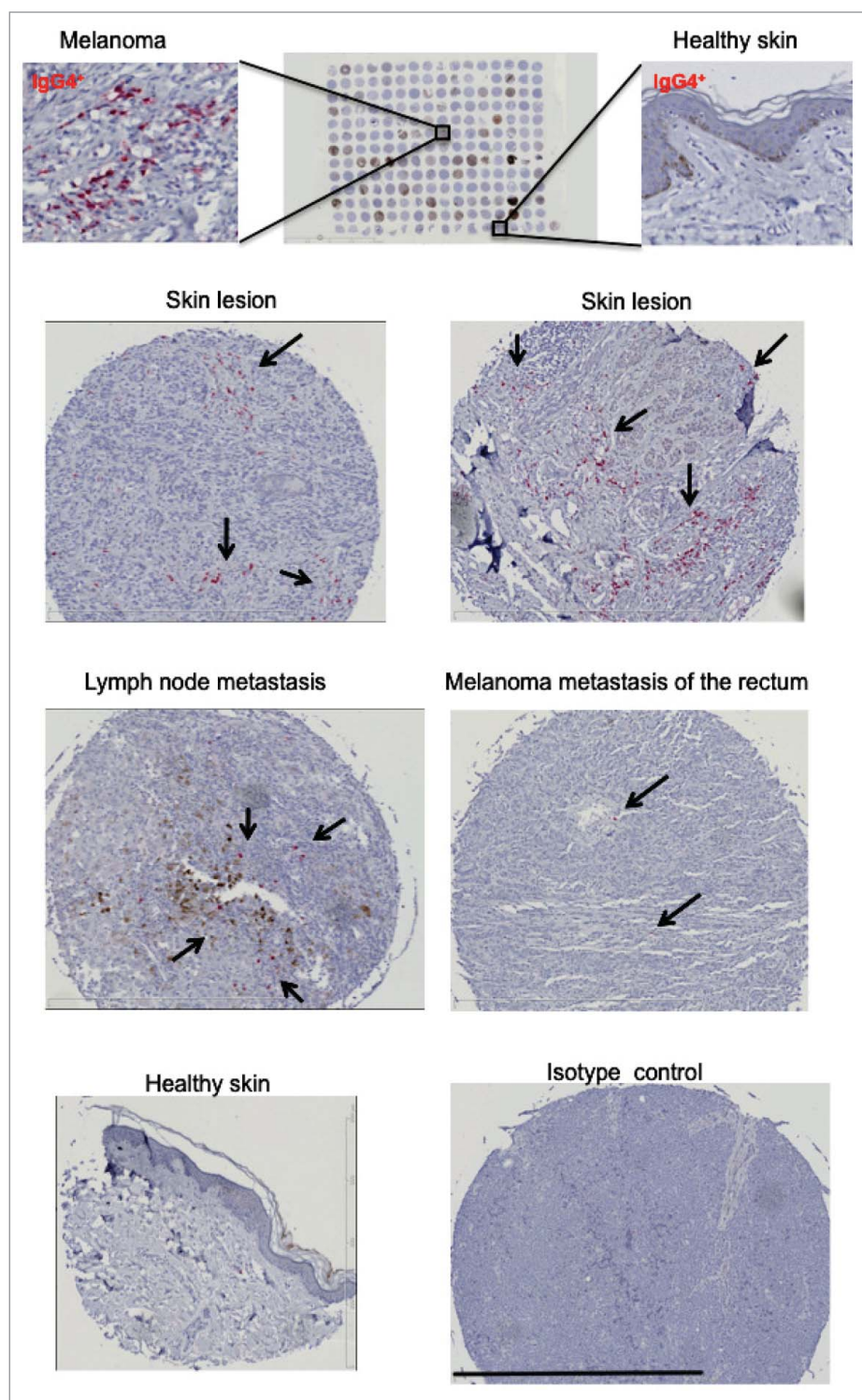


Figure 4. IgG4⁺ cell infiltrates are detected in melanoma skin tumors. A tissue microarray (TMA; BioMax, n = 256) consisting of melanoma skin tumors (n = 108), melanoma lymph nodes metastases (n = 56), distant organ metastases (n = 60) and healthy skin (n = 32) specimens (top panel) was examined for the presence of IgG4 by immunohistochemistry. IgG4 positive infiltrates were detected by alkaline phosphatase (in red, selected areas shown by black arrows) and sections were counterstained in hematoxylin (in blue). Representative images of IgG4 immunohistochemical staining for IgG4⁺ infiltration revealed positive staining in skin lesions (top and second panels), lymph node and distant metastases (third panel), while staining was less frequent in healthy skin (bottom panel). Black bar represents 800 μ m (third bottom right panel).

This Fc receptor blockade mechanism may operate in conjunction with recognition and occupancy of tumor antigens on the surface of cancer cells by IgG4, hindering engagement of potentially tumoricidal antibodies. Consistent with immune tolerance and inhibition of antitumor antibody functions described as features of IgG4, humoral immune profiles skewed toward IgG4 expression correlate with low protective efficacy of some HIV vaccination approaches.^{34,35} Immune bias toward IgG4 is also associated with disease pathology in IgG4-related inflammatory diseases and with immune suppression in cancers, such as pancreatic and squamous cell carcinomas and extrahepatic cholangiocarcinomas.^{18-20,36} Antibodies of the IgG subclass are also associated with patient responses to allergen immunotherapies.³⁷⁻³⁹ Manifestations of IgG4 humoral immune response bias include: 1) elevated or dysregulated IgG4 serum levels; 2) the presence of IgG4⁺ immune cell infiltrates in affected tissues; and 3) associations of tissue-resident IgG4⁺ cells with regulatory cells such as FoxP3⁺ Tregs. In concordance with previous reports, our data here provide rationale for further evaluation of dysregulated IgG4 antibody immunity as a prognostic indicator in melanoma, perhaps along with other immunoregulatory components. Clinical applications in regards to other malignant and inflammatory diseases or in monitoring host responses to vaccination and immunotherapies may also warrant future investigation.⁴⁰ Various components of the humoral immune system, including circulating antibodies, have been widely studied in relation to autoimmune, inflammatory, allergic and malignant diseases. In order to assess early disease, circulating antibodies monitored via microarray-based technologies could complement other biomarkers, such as circulating antigens, perhaps combined using emerging and novel bioinformatics tools.⁴¹⁻⁴³

Monitoring of dysregulated components of host immune surveillance, such as IgG4 or cell subsets that indicate immunosuppression,^{44,45} could help predict non-responders to

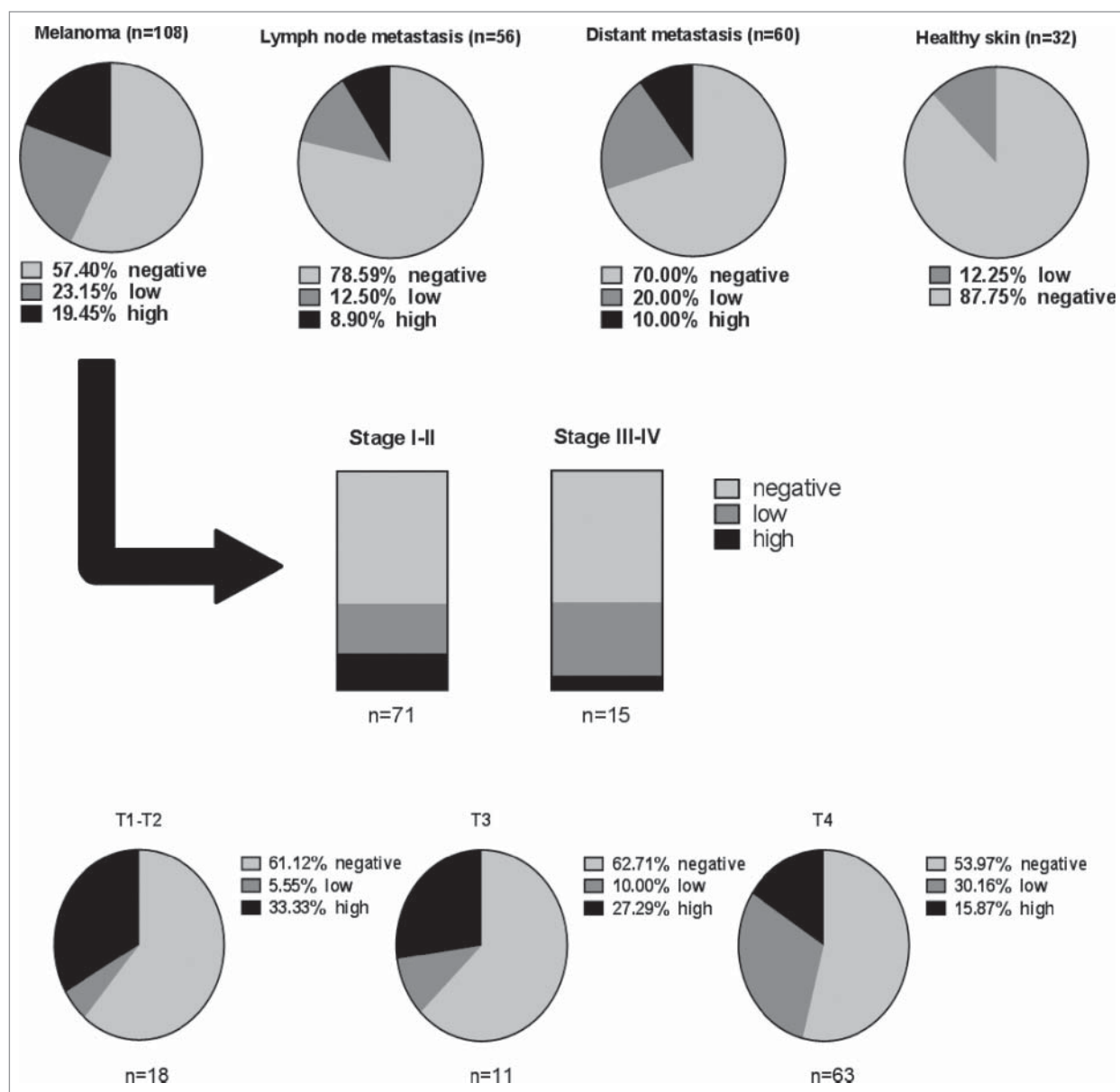


Figure 5. IgG4⁺ cell infiltration is higher in melanoma skin tumors, melanoma lymph nodes metastases, and distant organ metastases, compared to healthy skin. Top panel: Evaluation of tissue microarray (TMA) sections for frequency of IgG4⁺ cell infiltration in melanoma tissues in skin, lymph node metastases and distant metastases vs. healthy skin (Pie charts represent % of total numbers). Middle panel: In skin lesions (n = 108), IgG4⁺ infiltration is found in early (Stage I–II) and metastatic (Stage III–IV) disease. Lower panel: In melanoma skin lesions, IgG4⁺ cell infiltration is demonstrated across different melanoma skin tumor thicknesses (T1–T4). Analyses were performed by 2 independent researchers to identify the density of infiltration per high power field using the following criteria: “negative” = 0% infiltration; “low” < 25% infiltration; “high” > 25% infiltration.

immunotherapies including monoclonal antibodies. Simultaneous serological, diagnostic and immunological readouts may also be envisaged, based on the premise that multiple markers each with a unique sensitivity and specificity combined using an appropriate algorithm may harbor robust diagnostic or prognostic potential.⁴³ In concordance, we found that combined analysis of serum LDH and IgG4 levels had improved predictive value for disease progression. Combined clinical tools, such as radiological assessments along with the clinically-used serum LDH at baseline, have been reported to improve predictions of

patient outcomes following therapy with the monoclonal antibody bevacizumab.⁴⁶ Thus, assessments of multiple parameters may provide better prognostic utility for patient management in the future. Larger clinical studies are required to identify and validate more reliable combinations of disease biomarkers, including IgG4 in melanoma, to derive improved models of personalized medicine.

The immunological mechanisms that govern the nature of humoral responses in cancer remain only partly elucidated, including those underlying biased IgG4 subclass expression in patient

circulation and melanoma tumors. Although IgE and IgG4 are promoted by Th2 conditions, preferential expression of IL-10 in melanoma tumors could polarize a classical Th2-type immunity toward IgG4.^{47,48} At early phases of carcinogenesis, initial stress signals and release of mediators such as IL-25, TSLP and IL-33 by epithelial cells in the skin may drive IL-4 production and perhaps favor IgE which may confer protection.^{49–51} However, the persistent production of IL-10 by tumor cells and by tumor-promoted Tregs and macrophages may skew Th2 immunity in favor of IgG4 at early and late stages of disease manifestation. In this sense, higher than normal IgG4 levels particularly in early stage melanoma may signify active immunosuppressive forces already in operation.

In the future, it can be envisaged that antibodies less prone to IgG4 immune impairment, treatments that counteract IL-10-driven inflammation, or interventions that promote classical rather than alternative Th2 immunity could help refocus antitumoral immune signals. Strategies may include induction of protective Th2 responses that could perhaps drive *de novo* IgE or class switching from IgG4 to IgE.^{52–56} Alternatively, exploiting the potent functions of IgE class antibodies directed against tumor antigens may harness the intrinsic capacity of IgE for immune surveillance in Th2-biased tissue environments such as melanoma and other solid tumors.^{57,58} Taken together with emerging insights into the humoral arm of immunity in cancer, elucidating the significance and mechanisms of immunoglobulin subclasses may point to therapeutic strategies less prone to tumor-associated immune impairment.

In summary, we confirm that IgG4, a purported indicator of immunosuppressive forces in melanoma is elevated in the circulation of melanoma patients, is associated with worse clinical outcomes, and is a negative prognostic indicator at early stages of melanoma. Broader applications for IgG4 monitoring may be complimented by other clinical tools, such as LDH, or upon incorporation into immune profiling algorithms. Larger prospective studies will ascertain the clinical significance of IgG4, perhaps along with other immunoglobulin or immune cell signatures, in facilitating more accurate prediction of progressive disease. This may pave the way for improved patient stratification and optimal personalized therapies.

Materials and Methods

Sample collection

Human specimens were collected with written informed consent (approved by the Guy's Research Ethics Committee, Guy's and St. Thomas' NHS Trust, UK). Patients were staged and classified according to the American Joint Committee on Cancer Melanoma Staging and Classification criteria.⁴ Patients with Stage I–II melanoma had regional disease with no lymph node involvement or any other metastases; patients with Stage III melanoma had tumor cells detected in at least one lymph node; patients with Stage IV melanoma had distant metastases. Disease was staged by means of physical examinations by a trained dermatologist and verified by histopathological evaluations. The extent of disease was also assessed by means of appropriate

clinical imaging tools such as PET-CT or CT. The study endpoints were progression-free survival and overall survival.

IgG subclass and LDH analyses in human sera

Luminex bead array assay kits for assessments of IgG4 subclass antibodies in human sera were used according to the manufacturers' instructions. Data analyses to assess IgG subclass antibodies were conducted using Milliplex[®] MAP (Millipore, Cat-No HGAMMAG-301K) and data were acquired and analyzed using FlexMap3D (Luminex Corporation). LDH serum levels were measured at the central laboratories of the associated hospital.

Immunohistochemical evaluations

Tissue microarrays (TMA; BioMax, n = 256) of paraffin embedded sections were cut at 6–8 μ m thickness on a microtome (Leica) and dried overnight at 60°C. Prior to staining, sections were deparaffinized in xylene for 20 min and rehydrated by serial incubations in alcohol. Heat-induced antigen retrieval was performed in a 95°C water bath using a citric acid solution (pH = 6.0). Sections were subsequently blocked with human FcR blocking reagent (Miltenyi Biotec; Cat-No: 130-059-90) according to the manufacturer's instructions and stained using a mouse anti-human IgG4 antibody (BD Biosciences; Cat-No:555881), followed by a rabbit anti-mouse IgG antibody conjugated to biotin (DAKO; Cat-No: E035401-2). IgG4⁺ cell infiltrates were detected using the VECTOR Red Alkaline Phosphatase Substrate Kit with levamisole (Vector Labs; Cat-No: SK-5100). All sections were mounted in DPX mounting solution and analyzed on a Zeiss Axiophot microscope using a 10x magnification lens (Carl Zeiss) and NIS-Elements imaging software (Nikon). Cell density of sections stained for IgG4⁺ B cell infiltration was evaluated by 2 independent researchers to identify the occupancy of infiltration per high power field (10x) using the following criteria for occupancy: "negative" = 0% infiltration; "low" < 25% infiltration; and "high" > 25% infiltration.

Peripheral blood cell isolation and cytofluorimetric analysis of circulating IgG4⁺ B cells

Peripheral blood mononuclear cells (PBMC) were isolated from venous blood by density centrifugation over Ficoll-Paque Plus (GE Healthcare; Cat-No: 17144003). Cells were placed in RPMI 1640 medium (Life Technologies; Cat-No:31870-025) with 11.25% human serum albumin (Gemini Bio-Products, West Sacramento; Cat.-No: 800-125P), frozen in 10% DMSO (Sigma; Cat.-No: D2650) and stored in liquid nitrogen. Prior to analyses, cells were thawed and stained with fluorophore-conjugated antibodies against the following surface markers (BD Biosciences; Cat.-No: 560777, 562859, 562653, 641397,555947, 555881): CD45, CD22, CD19, CD3, CD14, IgG4. Prior to use, the anti-IgG4 antibody was pre-labeled with R-phycoerythrin (Innova Bioscience; Cat-No: 703-0030) following the manufacturer's instructions. Dead cells were excluded by staining with LIVE/DEAD[®] Fixable Dead Cell Stains (Life Technologies; L23105). Samples were subsequently acquired on a 5-laser SORP Fortessa (BD Bioscience) flow cytometer and data analyzed using the same instrument application settings across different

experiments. IgG4⁺ cells were analyzed based on gating with an isotype control. All sample analyses were performed using FlowJo software (Treestar).

Statistical analyses

Human serum and cell populations were assessed for normal Gaussian distribution with D'Agostino and Pearson omnibus normality test, followed by Kruskal–Wallis one-way analysis of variance with post-hoc Dunn's test. For comparisons between 2 groups and where populations were not normally distributed (analyzed by D'Agostino's K-square test for normality) statistical significance between groups was calculated using the Mann-Whitney-U-test. For correlation and patient survival analyses, Spearman and Mantel-Cox analyses were applied. Receiver Operating Characteristic (ROC) analyses and area under the curve (AUC) analyses were performed to assess the prognostic capacity of IgG4 in patient sera. The prognostic capacity of LDH and IgG4 combined serum tests was evaluated by applying a ROC analysis and calculating the area under the curve (AUC3). Threshold values were calculated via the Youden's Index²⁵ to compare patient serum IgG4 with LDH and determine hazard ratios (HR) for the risk of progression free survival (PFS) and overall survival (OS). The cohort was analyzed using multivariate analysis. The maximum follow-up (from time of venipuncture to the last documented clinical visit) was 4.82 years with a median follow-up for overall survival of 2.08 years for LDH and 2.04 years for IgG4. The correlation between IgG4 and C-reactive protein, between IgG4 and white blood cell count and between IgG4 and breslow thickness were calculated using a Spearman correlation as the cohorts were not normally distributed.

Comparative IgG4 serum level analyses among melanoma patients with subsequent stable (SD) or progressive disease (PD) were conducted. Patients were segregated into: a) those with stable disease (neither progressive disease nor subsequent relapse during study period); and b) those with progressive disease (either active progressing disease monitored by imaging tools such as PET-CT, or subsequent relapse during study period). Patients could only be up-staged from their initial staging during the study period.

Error bars in all figures represent standard error of mean (SEM). All statistical tests were performed using GraphPad Prism Version 6, with the exception of the calculation of hazard ratio (HR), which was performed using the SAS software version 9.2 (SAS Institute Inc.). All reported *P* values are derived from 2-

sided comparisons with values of less than 0.05 considered to indicate statistical significance.

Disclosure of Potential Conflicts of Interest

No potential conflicts of interest were disclosed.

Acknowledgments

The authors thank Mrs. Angela Clifford for recruitment of volunteers and Dr Ali Kirresh for critical reading and helpful discussions. We thank all patients and healthy volunteers who participated in this study. We acknowledge the Biomedical Research Centre Immune Monitoring Core Facility team at Guy's and St Thomas' NHS Foundation Trust for assistance. The authors are solely responsible for study design, data collection, analysis, decision to publish, and preparation of the manuscript.

Funding

The research was supported by the National Institute for Health Research (NIHR) Biomedical Research Centre based at Guy's and St Thomas' NHS Foundation Trust and King's College London (SNK, PK, IC, KMI, KEL, FV, JFS). The views expressed are those of the author(s) and not necessarily those of the NHS, the NIHR or the Department of Health. The authors acknowledge support by Cancer Research UK (C30122/A11527; C30122/A15774: SNK, JFS, DHJ, LS) (C16736/A8371: FON, KMI); the Medical Research Council (MR/L023091/1) (SNK, FON); the Dermatrust (KEL, IUE, FON); the British Skin Foundation (S633) (KEL, IUE, FON, SNK) Mary Dunhill Trust (FON); Breakthrough Breast Cancer (147) (KMI, SNK, FON); the Academy of Medical Sciences (DHJ, JFS, SNK); CR UK//NIHR in England/DoH for Scotland, Wales and Northern Ireland Experimental Cancer Medicine Centre (C10355/A15587) (FON, JFS, SNK, EK); CR UK/EPSRC/MRC/NIHR KCL/UCL Comprehensive Cancer Imaging Centre (C1519/A10331) (DHJ, JFS, SNK).

Supplemental Material

Supplemental data for this article can be accessed on the publisher's website.

References

1. Chapman PB, Hauschild A, Robert C, Haanen JB, Ascierto P, Larkin J, Dummer R, Garbe C, Testori A, Maio M, et al. Improved survival with vemurafenib in melanoma with BRAF V600E mutation. *N Engl J Med* 2011; 364:2507-16; PMID:21639808; <http://dx.doi.org/10.1056/NEJMoa1103782>
2. Hodi FS, O'Day SJ, McDermott DF, Weber RW, Sosman JA, Haanen JB, Gonzalez R, Robert C, Schadendorf D, Hassel JC, et al. Improved survival with ipilimumab in patients with metastatic melanoma. *N Engl J Med* 2010; 363:711-23; PMID:20525992; <http://dx.doi.org/10.1056/NEJMoa1003466>
3. Corrie PG, Marshall A, Dunn JA, Middleton MR, Nathan PD, Gore M, Davidson N, Nicholson S, Kelly CG, Marples M, et al. Adjuvant bevacizumab in patients with melanoma at high risk of recurrence (AVAST-M): preplanned interim results from a multi-centre, open-label, randomised controlled phase 3 study. *Lancet Oncol* 2014; 15:620-30; PMID:24745696; [http://dx.doi.org/10.1016/S1470-2045\(14\)70110-X](http://dx.doi.org/10.1016/S1470-2045(14)70110-X)
4. Balch CM, Gershenwald JE, Soong SJ, Thompson JF, Atkins MB, Byrd DR, Buzaid AC, Cochran AJ, Coit DG, Ding S, et al. Final version of 2009 AJCC melanoma staging and classification. *J Clin Oncol* 2009; 27:6199-206; PMID:19917835; <http://dx.doi.org/10.1200/JCO.2009.23.4799>
5. de Vries M, Speijers MJ, Bastiaannet E, Plukker JT, Brouwers AH, van Ginkel RJ, Suurmeijer AJ, Hoekstra HJ. Long-term follow-up reveals that ulceration and sentinel lymph node status are the strongest predictors for survival in patients with primary cutaneous melanoma. *Eur J Surg Oncol* 2011; 37:681-7; PMID:21636244; <http://dx.doi.org/10.1016/j.ejso.2011.05.003>
6. Morton DL, Thompson JF, Cochran AJ, Mozzillo N, Elashoff R, Essner R, Nieweg OE, Roses DF, Hoekstra HJ, Karakousis CP, et al. Sentinel-node biopsy or nodal observation in melanoma. *N Engl J Med* 2006; 355:1307-17; PMID:17005948; <http://dx.doi.org/10.1056/NEJMoa060992>
7. de Vries M, Vonkeman WG, van Ginkel RJ, Hoekstra HJ. Morbidity after inguinal sentinel lymph node biopsy and completion lymph node dissection in patients with cutaneous melanoma. *Eur J Surg Oncol* 2006; 32:785-9; PMID:16806794; <http://dx.doi.org/10.1016/j.ejso.2006.05.003>
8. Morton DL, Thompson JF, Cochran AJ, Mozzillo N, Nieweg OE, Roses DF, Hoekstra HJ, Karakousis CP,

- Puleo CA, Coventry BJ, et al. Final trial report of sentinel-node biopsy versus nodal observation in melanoma. *N Engl J Med* 2014; 370:599-609; PMID:24521106; <http://dx.doi.org/10.1056/NEJMoa1310460>
9. Poo-Hwu WJ, Ariyan S, Lamb L, Papac R, Zelterman D, Hu GL, Brown J, Fischer D, Bologna J, Buzaid AC. Follow-up recommendations for patients with American Joint Committee on Cancer Stages I-III malignant melanoma. *Cancer* 1999; 86:2252-8; PMID:10590365; [http://dx.doi.org/10.1002/\(SICI\)1097-0142\(19991201\)86:11%3c2252::AID-CNCR12%3e3.0.CO;2-Q](http://dx.doi.org/10.1002/(SICI)1097-0142(19991201)86:11%3c2252::AID-CNCR12%3e3.0.CO;2-Q)
 10. Kelderman S, Heemskerk B, van Tinteren H, van den Brom RR, Hoppers GA, van den Eertwegh AJ, Kapiteijn EW, de Groot JW, Soetekouw P, Jansen RL, et al. Lactate dehydrogenase as a selection criterion for ipilimumab treatment in metastatic melanoma. *Cancer Immunol, Immunother* 2014; 63:449-58; PMID:24609989
 11. Tandler N, Mosch B, Pietzsch J. Protein and non-protein biomarkers in melanoma: a critical update. *Amino acids* 2012; 43:2203-30; PMID:23053020; <http://dx.doi.org/10.1007/s00726-012-1409-5>
 12. Karakousis G, Yang R, Xu X. Circulating melanoma cells as a predictive biomarker. *J Invest Dermatol* 2013; 133:1460-2; PMID:23673501; <http://dx.doi.org/10.1038/jid.2013.34>
 13. Khoja L, Lorigan P, Zhou C, Lancashire M, Booth J, Cummings J, Califano R, Clack G, Hughes A, Dive C. Biomarker utility of circulating tumor cells in metastatic cutaneous melanoma. *J Invest Dermatol* 2013; 133:1582-90; PMID:23223143; <http://dx.doi.org/10.1038/jid.2012.468>
 14. Khoja L, Lorigan P, Dive C, Keilholz U, Fusi A. Circulating tumor cells as tumor biomarkers in melanoma: detection methods and clinical relevance. *Ann Oncol* 2015; 26(1):33-9; PMID:24907634; <http://dx.doi.org/10.1093/annonc/mdu207>
 15. Karagiannis P, Fittall M, Karagiannis SN. Evaluating biomarkers in melanoma. *Front Oncol* 2014; 4:383; PMID:25667918; <http://dx.doi.org/10.3389/fonc.2014.00383>
 16. Restrepo L, Stafford P, Johnston SA. Feasibility of an early Alzheimer's disease immunosignature diagnostic test. *J Neuroimmunol* 2013; 254:154-60; PMID:23084373; <http://dx.doi.org/10.1016/j.jneuroim.2012.09.014>
 17. Hughes AK, Cichacz Z, Scheck A, Coons SW, Johnston SA, Stafford P. Immunosignaturing can detect products from molecular markers in brain cancer. *PLoS one* 2012; 7:e40201; PMID:22815729; <http://dx.doi.org/10.1371/journal.pone.0040201>
 18. Daveau M, Pavie-Fischer J, Rivat L, Rivat C, Ropartz C, Peter HH, Cesarini JP, Kourilsky FM. IgG4 subclass in malignant melanoma. *J Natl Cancer Inst* 1977; 58:189-92; PMID:833869
 19. Harada K, Shimoda S, Kimura Y, Sato Y, Ikeda H, Igarashi S, Ren XS, Sato H, Nakanuma Y. Significance of immunoglobulin G4 (IgG4)-positive cells in extrahepatic cholangiocarcinoma: molecular mechanism of IgG4 reaction in cancer tissue. *Hepatology* 2012; 56:157-64; PMID:22290731; <http://dx.doi.org/10.1002/hep.25627>
 20. Vaglio A, Strehl JD, Manger B, Maritati F, Alberici F, Beyer C, Rech J, Sinico RA, Bonatti F, Battistelli L, et al. IgG4 immune response in Churg-Strauss syndrome. *Ann Rheum Dis* 2012; 71:390-3; PMID:22121132; <http://dx.doi.org/10.1136/ard.2011.155382>
 21. Gilbert AE, Karagiannis P, Dodev T, Koers A, Lacy K, Josephs DH, Takhar P, Geh JL, Healy C, Harries M, et al. Monitoring the systemic human memory B cell compartment of melanoma patients for anti-tumor IgG antibodies. *PLoS one* 2011; 6:e19330; PMID:21559411; <http://dx.doi.org/10.1371/journal.pone.0019330>
 22. Karagiannis P, Gilbert AE, Josephs DH, Ali N, Dodev T, Saul L, Correa I, Roberts L, Beddowes E, Koers A, et al. IgG4 subclass antibodies impair antitumor immunity in melanoma. *J Clin Invest* 2013; 123:17; <http://dx.doi.org/10.1172/JCI65579>
 23. Karagiannis P, Gilbert AE, Nestle FO, Karagiannis SN. IgG4 antibodies and cancer-associated inflammation: Insights into a novel mechanism of immune escape. *Oncoimmunology* 2013; 2:e24889; PMID:24073371; <http://dx.doi.org/10.4161/onci.24889>
 24. Baker SG. The central role of receiver operating characteristic (ROC) curves in evaluating tests for the early detection of cancer. *J Natl Cancer Inst* 2003; 95:511-5; PMID:12671018; <http://dx.doi.org/10.1093/jnci/95.7.511>
 25. Youden WJ. Index for rating diagnostic tests. *Cancer* 1950; 3:32-5; PMID:15405679; [http://dx.doi.org/10.1002/1097-0142\(1950\)3:1%3c32::AID-CNCR2820030106%3e3.0.CO;2-3](http://dx.doi.org/10.1002/1097-0142(1950)3:1%3c32::AID-CNCR2820030106%3e3.0.CO;2-3)
 26. Vereecken P, Cornelis F, Van Baren N, Vandersleyen V, Baurain JF. A synopsis of serum biomarkers in cutaneous melanoma patients. *Dermatol Res Pract* 2012; 2012:260643; PMID:22527956; <http://dx.doi.org/10.1155/2012/260643>
 27. Kawa S, Ito T, Watanabe T, Maruyama M, Hamano H, Muraki T, Arakura N. The Utility of Serum IgG4 Concentrations as a Biomarker. *Int J Rheumatol* 2012; 2012:198314; PMID:2253256; <http://dx.doi.org/10.1155/2012/198314>
 28. Halait H, Demartin K, Shah S, Soviero S, Langland R, Cheng S, Hillman G, Wu L, Lawrence HJ. Analytical performance of a real-time PCR-based assay for V600 mutations in the BRAF gene, used as the companion diagnostic test for the novel BRAF inhibitor vemurafenib in metastatic melanoma. *Diagn Mol Pathol* 2012; 21:1-8; PMID:22306669; <http://dx.doi.org/10.1097/PDM.0b013e31823b216f>
 29. Ilieva KM, Correa I, Josephs DH, Karagiannis P, Egbuniwe IU, Cafferkey MJ, Spicer JF, Harries M, Nestle FO, Lacy KE, et al. Effects of BRAF mutations and BRAF inhibition on immune responses to melanoma. *Mol Cancer Ther* 2014; 13:2769-83; PMID:25385327; <http://dx.doi.org/10.1158/1535-7163.MCT-14-0290>
 30. Egbuniwe IU, Karagiannis SN, Nestle FO, Lacy KE. Revisiting the role of B cells in skin immune surveillance. *Trends Immunol* 2015; 36:102-11; PMID:25616715; <http://dx.doi.org/10.1016/j.it.2014.12.006>
 31. Lighaam LC, Vermeulen E, Bleker T, Meijlink KJ, Aalberse RC, Barnes E, Culver EL, van Ham SM, Rispens T. Phenotypic differences between IgG4+ and IgG1+ B cells point to distinct regulation of the IgG4 response. *J Allergy Clin Immunol* 2014; 133:267-70 e1-6; PMID:24074895; <http://dx.doi.org/10.1016/j.jaci.2013.07.044>
 32. Davies AM, Rispens T, Ooijevaar-de Heer P, Gould HJ, Jefferis R, Aalberse RC, Sauton BJ. Structural determinants of unique properties of human IgG4-Fc. *J Mol Biol* 2014; 426:630-44; PMID:24211234; <http://dx.doi.org/10.1016/j.jmb.2013.10.039>
 33. Karagiannis P, Gilbert AE, Josephs DH, Ali N, Dodev T, Saul L, Correa I, Roberts L, Beddowes E, Koers A, et al. IgG4 subclass antibodies impair antitumor immunity in melanoma. *J Clin Invest* 2013; 123:1457-74; PMID:23454746; <http://dx.doi.org/10.1172/JCI65579>
 34. Chung AW, Ghebremichael M, Robinson H, Brown E, Choi I, Lane S, Dugast AS, Schoen MK, Rolland M, Suscovich TJ, et al. Polyfunctional Fc-effector profiles mediated by IgG subclass selection distinguish RV144 and VAX003 vaccines. *Sci Transl Med* 2013; 6:228ra38
 35. Lai JI, Licht AF, Dugast AS, Suscovich T, Choi I, Bailey-Kellogg C, Alter G, Ackerman ME. Divergent antibody subclass and specificity profiles but not protective HLA-B alleles are associated with variable antibody effector function among HIV-1 controllers. *J Virol* 2014; 88:2799-809; PMID:24352471; <http://dx.doi.org/10.1128/JVI.01310-13>
 36. Okazaki K, Uchida K, Koyabu M, Miyoshi H, Ikeura T, Takaoka M. IgG4 Cholangiopathy - current concept, diagnosis and pathogenesis. *J Hepatol* 2014; 61(3):690-5; PMID:24768756
 37. Keet CA, Frischmeyer-Guerrerio PA, Thyagarajan A, Schroeder JT, Hamilton RG, Boden S, Steele P, Driggers S, Burks AW, Wood RA. The safety and efficacy of sublingual and oral immunotherapy for milk allergy. *J Allergy Clin Immunol* 2012; 129:448-55, 55 e1-5
 38. James LK, Shamji MH, Walker SM, Wilson DR, Wachholz PA, Francis JN, Jacobson MR, Kimber I, Till SJ, Durham SR. Long-term tolerance after allergen immunotherapy is accompanied by selective persistence of blocking antibodies. *J Allergy Clin Immunol* 2011; 127:509-16 e1-5; PMID:21281875; <http://dx.doi.org/10.1016/j.jaci.2010.12.1080>
 39. Francis JN, James LK, Paraskevopoulos G, Wong C, Calderon MA, Durham SR, Till SJ. Grass pollen immunotherapy: IL-10 induction and suppression of late responses precedes IgG4 inhibitory antibody activity. *J Allergy Clin Immunol* 2008; 121:1120-5 e2; PMID:18374405; <http://dx.doi.org/10.1016/j.jaci.2008.01.072>
 40. Saul L, Josephs DH, Cutler K, Bradwell A, Karagiannis P, Selkirk C, Gould HJ, Jones P, Spicer JF, Karagiannis SN. Comparative reactivity of human IgE to cynomolgus monkey and human effector cells and effects on IgE effector cell potency. *mAbs* 2014; 6:509-22; PMID:24492303; <http://dx.doi.org/10.4161/mabs.27828>
 41. Maecker HT, Nolan GP, Fathman CG. New technologies for autoimmune disease monitoring. *Curr Opin Endocrinol Diabetes Obes* 2010; 17:322-8; PMID:20531181; <http://dx.doi.org/10.1097/MED.0b013e32833ada91>
 42. Sykes KF, Legutkij JB, Stafford P. Immunosignaturing: a critical review. *Trends Biotechnol* 2013; 31:45-51; PMID:23219199; <http://dx.doi.org/10.1016/j.tibtech.2012.10.012>
 43. Tsoka S, Ainali C, Karagiannis P, Josephs DH, Saul L, Nestle FO, Karagiannis SN. Toward prediction of immune mechanisms and design of immunotherapies in melanoma. *Crit Rev Biomed Eng* 2012; 40:279-94; PMID:23140120; <http://dx.doi.org/10.1615/CritRevBiomedEng.v40.i4.40>
 44. Martens A, Zelba H, Garbe C, Pawelec G, Weide B. Monocytic myeloid-derived suppressor cells in advanced melanoma patients: Indirect impact on prognosis through inhibition of tumor-specific T-cell responses? *Oncoimmunology* 2014; 3:e27845; PMID:24800171; <http://dx.doi.org/10.4161/onci.27845>
 45. Weide B, Martens A, Zelba H, Stutz C, Derhovanessian E, Di Giacomo AM, Maio M, Sucker A, Schilling B, Schadendorf D, et al. Myeloid-derived suppressor cells predict survival of patients with advanced melanoma: comparison with regulatory T cells and NY-ESO-1- or melan-A-specific T cells. *Clin Cancer Res* 2014; 20:1601-9; PMID:24323899; <http://dx.doi.org/10.1158/1078-0432.CCR-13-2508>
 46. Gray MR, Martin del Campo S, Zhang X, Zhang H, Souza FF, Carson WE, 3rd, Smith AD. Metastatic melanoma: lactate dehydrogenase levels and CT imaging findings of tumor devascularization allow accurate prediction of survival in patients treated with vemurafenib. *Radiology* 2014; 270:425-34; PMID:24072776; <http://dx.doi.org/10.1148/radiol.13130776>
 47. Jeannin P, Lecoanet S, Delneste Y, Gauchat JF, Bonnefoy JY. IgE versus IgG4 production can be differentially regulated by IL-10. *J Immunol* 1998; 160:3555-61; PMID:9531318
 48. Punnonen J, de Waal Malefyt R, van Vlasselaer P, Gauchat JF, de Vries JE. IL-10 and viral IL-10 prevent IL-4-induced IgE synthesis by inhibiting the accessory cell function of monocytes. *J Immunol* 1993; 151:1280-9; PMID:8393044

49. Komai-Koma M, Brombacher F, Pushparaj PN, Arendse B, McSharry C, Alexander J, Chaudhuri R, Thomson NC, McKenzie AN, McInnes I, et al. Interleukin-33 amplifies IgE synthesis and triggers mast cell degranulation via interleukin-4 in naive mice. *Allergy* 2012; 67:1118-26; PMID:22702477; <http://dx.doi.org/10.1111/j.1398-9995.2012.02859.x>
50. Strid J, Sobolev O, Zafirova B, Polic B, Hayday A. The intraepithelial T cell response to NKG2D-ligands links lymphoid stress surveillance to atopy. *Science* 2011; 334:1293-7; PMID:22144628; <http://dx.doi.org/10.1126/science.1211250>
51. Cipolat S, Hoste E, Natsuga K, Quist SR, Watt FM. Epidermal barrier defects link atopic dermatitis with altered skin cancer susceptibility. *eLife* 2014; 3:e01888; PMID:24843010; <http://dx.doi.org/10.7554/eLife.01888>
52. Singer J, Jensen-Jarolim E. IgE-based immunotherapy of cancer: challenges and chances. *Allergy* 2014; 69:137-49; PMID:24117861; <http://dx.doi.org/10.1111/all.12276>
53. Jensen-Jarolim E, Achatz G, Turner MC, Karagiannis S, Legrand F, Capron M, Penichet ML, Rodríguez JA, Siccardi AG, Vangelista L, et al. *AllergoOncology: the role of IgE-mediated allergy in cancer. Allergy* 2008; 63:1255-66; PMID:18671772; <http://dx.doi.org/10.1111/j.1398-9995.2008.01768.x>
54. Nigro EA, Soprana E, Brini AT, Ambrosi A, Yenagi VA, Dombrowicz D, Siccardi AG, Vangelista L. An antitumor cellular vaccine based on a mini-membrane IgE. *J Immunol* 2012; 188:103-10; PMID:22124126; <http://dx.doi.org/10.4049/jimmunol.1101842>
55. Riemer AB, Untertsmayr E, Knittelfelder R, Duschl A, Pehamberger H, Zielinski CC, Scheiner O, Jensen-Jarolim E. Active induction of tumor-specific IgE antibodies by oral mimotope vaccination. *Cancer Res* 2007; 67:3406-11; PMID:17409451; <http://dx.doi.org/10.1158/0008-5472.CAN-06-3758>
56. Dalessandri T, Strid J. Beneficial autoimmunity at body surfaces - immune surveillance and rapid type 2 immunity regulate tissue homeostasis and cancer. *Front Immunol* 2014; 5:347; PMID:25101088; <http://dx.doi.org/10.3389/fimmu.2014.00347>
57. Josephs DH, Spicer JF, Karagiannis P, Gould HJ, Karagiannis SN. IgE immunotherapy: a novel concept with promise for the treatment of cancer. *mAbs* 2014; 6:54-72; PMID:24423620; <http://dx.doi.org/10.4161/mabs.27029>
58. Josephs DH, Bax HJ, Karagiannis SN. Tumour-associated macrophage polarisation and re-education with immunotherapy. *Front Biosci (Elite Ed)* 2015; 7:293-308; PMID:25553381