



King's Research Portal

DOI:

[10.1186/1532-429X-15-S1-P85](https://doi.org/10.1186/1532-429X-15-S1-P85)

Document Version

Publisher's PDF, also known as Version of record

[Link to publication record in King's Research Portal](#)

Citation for published version (APA):

Zarinabad Nooralipour, N., Sammut, E., Voigt, T., Hautvast, G. L. T. F., Breeuwer, M., Razavi, R., Nagel, E., Puntmann, V., & Chiribiri, A. (2013). Improved accuracy of myocardial blood flow quantification by first pass perfusion MR when corrected for steady state T1 relaxation. *Journal of Cardiovascular Magnetic Resonance*. <https://doi.org/10.1186/1532-429X-15-S1-P85>

Citing this paper

Please note that where the full-text provided on King's Research Portal is the Author Accepted Manuscript or Post-Print version this may differ from the final Published version. If citing, it is advised that you check and use the publisher's definitive version for pagination, volume/issue, and date of publication details. And where the final published version is provided on the Research Portal, if citing you are again advised to check the publisher's website for any subsequent corrections.

General rights

Copyright and moral rights for the publications made accessible in the Research Portal are retained by the authors and/or other copyright owners and it is a condition of accessing publications that users recognize and abide by the legal requirements associated with these rights.

- Users may download and print one copy of any publication from the Research Portal for the purpose of private study or research.
- You may not further distribute the material or use it for any profit-making activity or commercial gain
- You may freely distribute the URL identifying the publication in the Research Portal

Take down policy

If you believe that this document breaches copyright please contact librarypure@kcl.ac.uk providing details, and we will remove access to the work immediately and investigate your claim.

POSTER PRESENTATION

Open Access

Improved accuracy of myocardial blood flow quantification by first pass perfusion MR when corrected for steady state T1 relaxation

Niloufar Zarinabad^{1*}, Eva Sammut¹, Tobias Voigt⁴, Gilion Hautvast⁵, Marcel Breeuwer^{2,3}, Reza Razavi¹, Eike Nagel¹, Valentina O Puntmann¹, Amedeo Chiribiri¹

From 16th Annual SCMR Scientific Sessions
San Francisco, CA, USA. 31 January - 3 February 2013

Background

Quantification of myocardial blood flow (MBF) on first-pass dynamic contrast enhanced (DCE) MR perfusion imaging has been performed by several different methods. However MBF estimates are dependent on the analysis model used, as the absolute concentration of the contrast agent during first pass is not known. To improve the accuracy of the MBF estimates calibration is required. We propose a novel approach for the quantification of MBF based on patient-specific calibration using steady state T1 relaxation values (1) (figure 1).

Methods

T1 weighted images were acquired before and after contrast injection to perform steady state measurements of myocardial blood volume (MBV_{ss}) (2): $MBV_{ss} = (1/T1_{post\ contrast} - 1/T1_{pre\ contrast})\ tissue / (1/T1_{post\ contrast} - 1/T1_{pre\ contrast})\ blood$.

Based on the first pass perfusion data, MBV_{DCE} and MBF_{DCE} were obtained using Fermi deconvolution. The calibration factor (CF) was calculated as $CF = MBV_{ss} / MBV_{DCE}$ and used to calibrate MBF values (MBF_{calib}) according to: $MBF_{calib} = MBF_{DCE} * CF$.

Perfusion data were obtained from five patients using a dual-bolus injection of 0.075mmol/kg Gadobutrol (Gadovist, Bayer, Germany) injected at 4ml/minute followed by a 20 ml saline flush using a Philips Achieva 3T (TX) system, equipped with a 32-channel cardiac phased array receiver coil (Philips, Best, Netherlands). Hyperaemia was induced with adenosine administered at 140 mcg/kg/min. First-pass perfusion images were acquired

using a saturation recovery gradient echo method (TR/TE 3.0ms/1.0ms, flip-angle 15°; effective k-t SENSE acceleration 3.8, spatial resolution 1.2x1.2x10mm, saturation-recovery delay 120 ms). T1 images were acquired using a cardiac triggered Modified Look Locker Inversion Recovery (MOLLI) sequence (slice thickness 8 mm, FOV 388x320mm², matrix 216x216, 11 different T1, range 90ms-3s). T1 was estimated through fitting of a three

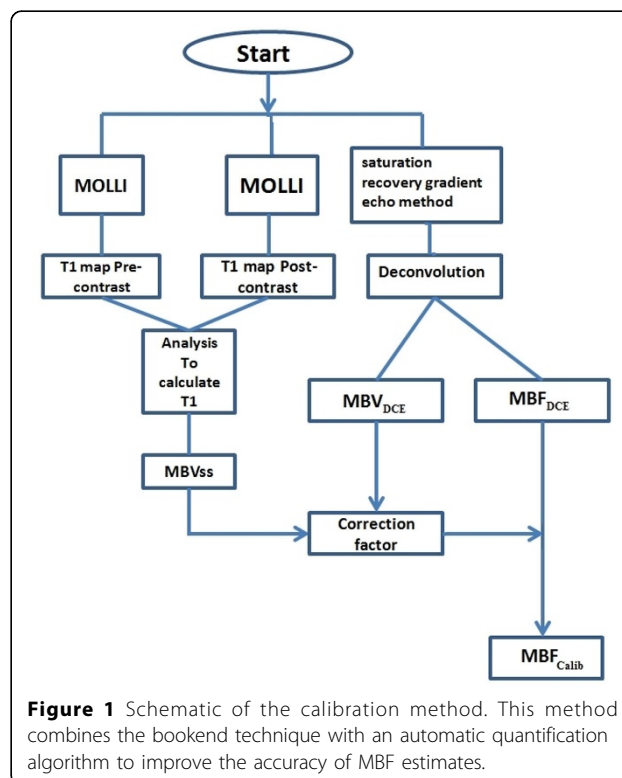


Figure 1 Schematic of the calibration method. This method combines the bookend technique with an automatic quantification algorithm to improve the accuracy of MBF estimates.

¹Imaging Sciences and Biomedical Engineering, Kings College London, London, UK
Full list of author information is available at the end of the article

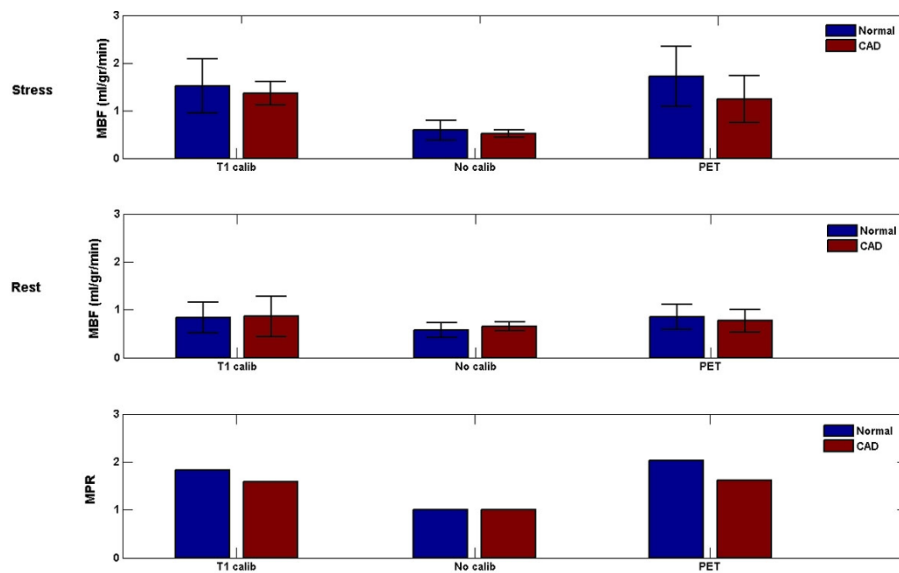


Figure 2 Comparison between MBFcalib (ml/ gr/min) values determined by the novel T1 calibration algorithm (T1 calib), the MBF values obtained from standard non calibrated algorithm (no calib) and reference values from literature in normal (Blue) and ischemic (red) myocardial regions. The calibrated measurements agree with literature values.

parameter exponential model $SI(t) = A - B \exp(-t/T1^*)$ and Look-Locker correction $T1 = T1^* / (B/A - 1)$.

Results

The bar plot in figure 2 compares the rest and stress mean MBFcalib values with the mean MBFDCE values and the reference perfusion values reported in the literature (3) in normal and ischaemic myocardial regions. The mean stress values of MBFcalib for both normal and abnormal regions (1.35 ± 0.24 ml/gr/min for ischemic and 1.51 ± 0.56 ml/gr/min for normal region) are in closer agreement with stress PET values (1.24 ± 0.49 ml/gr/min for ischemic and 1.73 ± 0.63) compared with the MBFDCE values obtained from non calibrated data (0.58 ± 0.207 ml/gr/min for ischemic and 0.65 ± 0.070 for normal).

Conclusions

The measurements of quantitative MBF agree closely with previously published gold-standard measurements by PET after calibration is performed. The addition of T1 steady state measurements to DCE measurements of MBF improve the accuracy of the measurement as inter-subject variability is taken into account.

Funding

The authors acknowledge financial support from the Department of Health via the National Institute for Health Research (NIHR) comprehensive Biomedical Research Centre award to Guys and St Thomas NHS

Foundation Trust in partnership with Kings College London.

Author details

¹Imaging Sciences and Biomedical Engineering, Kings College London, London, UK. ²Imaging Systems, MR, Philips Healthcare, Best, the Netherlands. ³Biomedical Engineering, Biomedical Image Analysis, Eindhoven University of Technology, Eindhoven, the Netherlands. ⁴Clinical Research Europe, Philips Research, Aachen, Germany. ⁵Healthcare Incubators, Philips Innovation Group, Eindhoven, the Netherlands.

Published: 30 January 2013

References

1. Shin W: *Magn Reson Med* 2007.
2. Bauer W: *Magn Reson Med* 1996.
3. Morton G: *JACC* 2012.

doi:10.1186/1532-429X-15-S1-P85

Cite this article as: Zarinabad et al: Improved accuracy of myocardial blood flow quantification by first pass perfusion MR when corrected for steady state T1 relaxation. *Journal of Cardiovascular Magnetic Resonance* 2013 15(Suppl 1):P85.