



## King's Research Portal

DOI:

[10.1016/S0140-6736\(16\)31140-0](https://doi.org/10.1016/S0140-6736(16)31140-0)

*Document Version*

Publisher's PDF, also known as Version of record

[Link to publication record in King's Research Portal](#)

*Citation for published version (APA):*

Richards, D. A., Ekers, D., McMillan, D., Taylor, R. S., Byford, S., Warren, F. C., Barrett, B., Farrand, P. A., Gilbody, S., Kuyken, W., O'Mahen, H., Watkins, E., Wright, K. A., Hollon, S. D., Reed, N., Rhodes, S., Emily, F., & Katie, F. (2016). Cost and Outcome of Behavioural Activation versus Cognitive Behavioural Therapy for Depression (COBRA): a randomised, controlled, non-inferiority trial. *The Lancet*, *388*(10047), 871-880. [https://doi.org/10.1016/S0140-6736\(16\)31140-0](https://doi.org/10.1016/S0140-6736(16)31140-0)

### **Citing this paper**

Please note that where the full-text provided on King's Research Portal is the Author Accepted Manuscript or Post-Print version this may differ from the final Published version. If citing, it is advised that you check and use the publisher's definitive version for pagination, volume/issue, and date of publication details. And where the final published version is provided on the Research Portal, if citing you are again advised to check the publisher's website for any subsequent corrections.

### **General rights**

Copyright and moral rights for the publications made accessible in the Research Portal are retained by the authors and/or other copyright owners and it is a condition of accessing publications that users recognize and abide by the legal requirements associated with these rights.

- Users may download and print one copy of any publication from the Research Portal for the purpose of private study or research.
- You may not further distribute the material or use it for any profit-making activity or commercial gain
- You may freely distribute the URL identifying the publication in the Research Portal

### **Take down policy**

If you believe that this document breaches copyright please contact [librarypure@kcl.ac.uk](mailto:librarypure@kcl.ac.uk) providing details, and we will remove access to the work immediately and investigate your claim.

# Cost and Outcome of Behavioural Activation versus Cognitive Behavioural Therapy for Depression (COBRA): a randomised, controlled, non-inferiority trial



David A Richards, David Ekers, Dean McMillan, Rod S Taylor, Sarah Byford, Fiona C Warren, Barbara Barrett, Paul A Farrand, Simon Gilbody, Willem Kuyken, Heather O'Mahen, Ed R Watkins, Kim A Wright, Steven D Hollon, Nigel Reed, Shelley Rhodes, Emily Fletcher, Katie Finning



## Summary

**Background** Depression is a common, debilitating, and costly disorder. Many patients request psychological therapy, but the best-evidenced therapy—cognitive behavioural therapy (CBT)—is complex and costly. A simpler therapy—behavioural activation (BA)—might be as effective and cheaper than is CBT. We aimed to establish the clinical efficacy and cost-effectiveness of BA compared with CBT for adults with depression.

**Methods** In this randomised, controlled, non-inferiority trial, we recruited adults aged 18 years or older meeting Diagnostic and Statistical Manual of Mental Disorders IV criteria for major depressive disorder from primary care and psychological therapy services in Devon, Durham, and Leeds (UK). We excluded people who were receiving psychological therapy, were alcohol or drug dependent, were acutely suicidal or had attempted suicide in the previous 2 months, or were cognitively impaired, or who had bipolar disorder or psychosis or psychotic symptoms. We randomly assigned participants (1:1) remotely using computer-generated allocation (minimisation used; stratified by depression severity [Patient Health Questionnaire 9 (PHQ-9) score of <19 vs ≥19], antidepressant use, and recruitment site) to BA from junior mental health workers or CBT from psychological therapists. Randomisation done at the Peninsula Clinical Trials Unit was concealed from investigators. Treatment was given open label, but outcome assessors were masked. The primary outcome was depression symptoms according to the PHQ-9 at 12 months. We analysed all those who were randomly allocated and had complete data (modified intention to treat [mITT]) and also all those who were randomly allocated, had complete data, and received at least eight treatment sessions (per protocol [PP]). We analysed safety in the mITT population. The non-inferiority margin was 1.9 PHQ-9 points. This trial is registered with the ISCRTN registry, number ISRCTN27473954.

**Findings** Between Sept 26, 2012, and April 3, 2014, we randomly allocated 221 (50%) participants to BA and 219 (50%) to CBT. 175 (79%) participants were assessable for the primary outcome in the mITT population in the BA group compared with 189 (86%) in the CBT group, whereas 135 (61%) were assessable in the PP population in the BA group compared with 151 (69%) in the CBT group. BA was non-inferior to CBT (mITT: CBT 8.4 PHQ-9 points [SD 7.5], BA 8.4 PHQ-9 points [7.0], mean difference 0.1 PHQ-9 points [95% CI -1.3 to 1.5],  $p=0.89$ ; PP: CBT 7.9 PHQ-9 points [7.3]; BA 7.8 [6.5], mean difference 0.0 PHQ-9 points [-1.5 to 1.6],  $p=0.99$ ). Two (1%) non-trial-related deaths (one [1%] multidrug toxicity in the BA group and one [1%] cancer in the CBT group) and 15 depression-related, but not treatment-related, serious adverse events (three in the BA group and 12 in the CBT group) occurred in three [2%] participants in the BA group (two [1%] patients who overdosed and one [1%] who self-harmed) and eight (4%) participants in the CBT group (seven [4%] who overdosed and one [1%] who self-harmed).

**Interpretation** We found that BA, a simpler psychological treatment than CBT, can be delivered by junior mental health workers with less intensive and costly training, with no lesser effect than CBT. Effective psychological therapy for depression can be delivered without the need for costly and highly trained professionals.

**Funding** National Institute for Health Research.

**Copyright** © The Author(s). Published by Elsevier Ltd. This is an Open Access article under the CC BY license.

## Introduction

Clinical depression is a common and debilitating mental health disorder, being the second largest cause of global disability.<sup>1</sup> Globally, the effect of depression on aggregate economic output is predicted to be US\$5.36 trillion between 2011 and 2030.<sup>2</sup> Reduction of these substantial costs is a key objective for low-income, middle-income, and high-income countries alike.

Antidepressant medication and cognitive behavioural therapy (CBT) have the most clinical evidence. However, although antidepressant medications are cheap, their use is limited by side-effects, poor patient adherence, and discontinuation relapse risk. CBT is as effective as are antidepressants<sup>3</sup> and provides long-term protection against relapse, but it is complex and its effectiveness is dependent on the skills of

*Lancet* 2016; 388: 871–80

Published Online

July 22, 2016

[http://dx.doi.org/10.1016/S0140-6736\(16\)31140-0](http://dx.doi.org/10.1016/S0140-6736(16)31140-0)

S0140-6736(16)31140-0

See [Comment](#) page 843

Medical School

(Prof D A Richards PhD,

Prof R S Taylor PhD,

F C Warren PhD, S Rhodes PhD,

E Fletcher MSc, K Finning BSc),

School of Psychology

(P A Farrand PhD,

H O'Mahen PhD,

Prof E R Watkins PhD,

K A Wright PhD), and Lived

Experience Group, Sir Henry

Wellcome Building for Mood

Disorders Research

(Nigel Reed BSc), University of

Exeter, Exeter, UK;

Psychological Therapy

Department, Tees, Esk and

Wear Valleys NHS Foundation

Trust, Chester-le-Street, County

Durham, UK (D Ekers PhD);

Department of Health Sciences,

University of York, Heslington,

York, UK (D McMillan PhD,

Prof S Gilbody DPhil); Institute of

Psychiatry, Kings College

London, London, UK

(Prof S Byford PhD,

B Barrett PhD); Department of

Psychiatry, University of

Oxford, The Prince of Wales

International Centre,

Warneford Hospital, Oxford,

UK (Prof W Kuyken PhD); and

Department of Psychology,

Vanderbilt University,

Nashville, TN, USA

(Prof Steven D Hollon PhD)

Correspondence to:

Prof D A Richards, Medical

School, University of Exeter,

St Luke's Campus,

Exeter EX1 2LU, UK

[d.a.richards@exeter.ac.uk](mailto:d.a.richards@exeter.ac.uk)

### Research in context

#### Evidence before this study

Authors of published systematic reviews, including a Cochrane review, have commented on the limitations of existing evidence for the effectiveness of behavioural activation (BA) for depression compared with cognitive behavioural therapy (CBT) and the scarcity of cost-effectiveness data, with the existing evidence insufficiently robust to establish comparability. Authors of the Cochrane review called for studies that improve the quality of evidence. Our pretrial evidence took published review findings from the UK National Institute for Health and Care Excellence (NICE), who reported no difference in treatment outcome between BA and CBT immediately after treatment (Hedges'  $g$  0.139 [95% CI -0.400 to 0.122];  $p=0.296$ ) and subsequent follow-up (0.135 [-0.456 to 0.186];  $p=0.409$ ). The authors of NICE's review regarded the existing international evidence as insufficient to recommend BA for first-line treatment in clinical guidelines for depression.

#### Added value of this study

This trial addresses these research recommendations and is, to our knowledge, the only high-quality, fully powered

non-inferiority and cost-effectiveness study addressing both the effects and costs of BA compared with CBT for depression. When we combine the data from our study with data from other international studies in the meta-analysis done by NICE, our data reduce the 95% CIs around the effect size for depression symptoms immediately after treatment (Hedges'  $g$  0.054 [95% CI -0.214 to 0.107];  $p=0.514$ ) and at follow-up (0.059 [-0.234 to 0.115];  $p=0.503$ ) and unequivocally show both non-inferiority of BA compared with CBT and that BA is more cost-effective than is CBT against commonly applied decision maker willingness-to-pay thresholds.

#### Implications of all the available evidence

Junior mental health workers with no professional training in psychological therapies can deliver behavioural activation, a simple psychological treatment, with no lesser effect than CBT has and at less cost. Effective psychological therapy for depression can be delivered without the need for costly and highly trained professionals.

psychological therapists, who are expensive to train and employ. For low-income and middle-income countries in particular, the need for an extensive professional infrastructure of such therapists limits access to CBT.

Globally, health services require effective, easily implemented, and cost-effective psychological treatments for depression that can be delivered by less specialist health workers than are needed at present to close a treatment gap that can be as much as 80–90% in some low-income countries.<sup>4</sup> One potential alternative, behavioural activation (BA), is a simple psychological treatment for depression. It might be easy and quick to train junior mental health workers (MHWs) in BA who have no professional training in psychological therapies.<sup>5</sup> However, this method is only appropriate if BA delivered in this way is as effective as and more cost-effective than is CBT.

Although BA compares favourably with CBT in systematic reviews,<sup>6,7</sup> the existing evidence is insufficiently robust to establish comparability.<sup>8</sup> Authors of a Cochrane review<sup>7</sup> called for more quality studies than have been done so far and the UK National Institute for Health and Care Excellence (NICE) regarded the international evidence as insufficient to recommend BA for first-line treatment in clinical guidelines,<sup>8</sup> instead recommending a large non-inferiority study: “to establish whether behavioural activation is an effective alternative to CBT”.<sup>8</sup> Given these recommendations, we hypothesised that BA is non-inferior to CBT for depression treatment response in adults with depression and that BA is cost-effective compared with CBT.

## Methods

### Study design and participants

In this randomised, controlled, open-label, non-inferiority trial (the Cost and Outcome of Behavioural Activation versus Cognitive Behaviour Therapy for Depression [COBRA] trial), we recruited participants from primary care and psychological therapy services in Devon, Durham, and Leeds (UK). Eligible participants were adults aged 18 years or older who met diagnostic criteria for major depressive disorder assessed by researchers using a standard clinical interview (Structured Clinical Interview for the Diagnostic and Statistical Manual of Mental Disorders, Fourth Edition [SCID]). We excluded people at interview who were receiving psychological therapy, were alcohol or drug dependent, were acutely suicidal or had attempted suicide in the previous 2 months, or were cognitively impaired, or who had bipolar disorder or psychosis or psychotic symptoms.

We recruited participants by searching the electronic case records of general practices and psychological therapy services for patients with depression, identifying potential participants from depression classification codes. Practices or services contacted patients to seek permission for researcher contact. The research team interviewed those that responded, provided detailed information on the study, took informed written consent, and assessed people for eligibility. The UK South West Research Ethics Committee gave national approval for the study (NRES/07/H1208/60). The protocol has been published previously.<sup>10</sup>

### Randomisation and masking

After eligibility was established, consent agreed, and baseline data collected, we randomly allocated participants

(1:1) to BA or CBT using computer-generated allocation, stratified by depression severity according to the Patient Health Questionnaire 9 (PHQ-9)<sup>11</sup> (<19 vs ≥19), antidepressant use (taking antidepressants or not), and recruitment site (Devon, Durham, or Leeds). A computer-based system allocated the first 20 participants to each group on a truly random basis. For subsequent participants, allocation was minimised to maximise the likelihood of balance in stratification variables across the two study groups. The registered Peninsula Clinical Trials Unit (Plymouth University, Plymouth, UK) allocated participants remotely after baseline data entry to ensure allocation concealment. Treatment was given open label, but outcome assessors were masked to participants' allocations. Concealment was ensured by use of an externally administered password-protected trial website with retention of a stochastic element to the minimisation algorithm. We recorded instances when outcome assessors were unmasked during interviews if participants informed them of their allocation.

### Procedures

We developed our clinical protocols in line with published treatment protocols,<sup>12,13</sup> including those from our own trials,<sup>14,15</sup> advice from international collaborators, and NICE recommendations<sup>8</sup> for duration and frequency of BA and CBT. Full-time National Health Service (NHS) MHWs and therapists worked half of their working week for COBRA (with the other half worked as normal) and followed written manuals to deliver a maximum of 20 sessions over 16 weeks, with the option of four additional booster sessions if the patients wanted them.<sup>8</sup> Treatment included core and supplementary techniques appropriate to the BA or CBT protocol to be used as clinically indicated; for example, behavioural or cognitive strategies for management of anxiety. All core components of both treatments were delivered by session eight, which we considered to represent a minimally sufficient dose of therapy (appendix). Sessions were face to face, lasting for 60 min. BA and CBT experts on the trial team trained MHWs and therapists for 5 days in either BA or CBT. MHWs and therapists were assessed for competence at the end of training with use of standardised quality criteria instruments consistent with the relevant treatment: either the Quality of Behavioral Activation Scale (Dimidjian S, University of Colorado, personal communication) or the Revised Cognitive Therapy Scale for CBT.<sup>16</sup> Further training was given if competency was not demonstrated. MHWs and therapists received 60 min of clinical supervision fortnightly from NHS psychological therapists clinically experienced in BA or CBT, overseen by trial team experts.

Junior MHWs—graduates trained to deliver guided self-help interventions, but with neither professional mental health qualifications nor formal training in psychological therapies—delivered an individually tailored programme re-engaging participants with positive

environmental stimuli and developing depression management strategies. Participants were encouraged to increase their contact with individually specified positive situations and reduce their avoidance of other situations. Specific BA techniques included identification of depressed behaviours, analysis of the triggers and consequences of depressed behaviours, monitoring of activities, development of alternative goal-orientated behaviours, scheduling of activities, and development of alternative behavioural responses to rumination.

Professional or equivalently qualified psychotherapists, accredited as CBT therapists with the British Association of Behavioural and Cognitive Psychotherapy, with a postgraduate diploma in CBT, delivered a personalised treatment programme based on an assessment of how participants' beliefs lead to emotional distress and ineffectual coping. Participants used cognitive and behavioural exercises to specifically test the accuracy of those beliefs by identifying and modifying negative thoughts and beliefs that give rise to them. Specific techniques included participants monitoring moods and activities, planning of exercises to test negative beliefs, and thought records to identify and examine the accuracy of negative automatic thoughts and underlying beliefs. We did follow-up assessments 6 months, 12 months, and 18 months after randomisation.

We assessed the quality of and adherence to treatment using audiotapes and written records of therapy sessions. Independent experts in both treatments rated a random (with use of a computer-generated random number sequence) sample of tapes, stratified by therapist, therapy session, and intervention, for competence using the Revised Cognitive Therapy Scale<sup>16</sup> for CBT (range 0–72) and the Quality of Behavioral Activation Scale (Dimidjian S, University of Colorado, personal communication) for BA (range 0–96). All therapists recorded the specific therapeutic techniques that they had used for each session on a checklist.

### Outcomes

The primary outcome was self-reported depression severity (PHQ-9 score<sup>11</sup>) at 12 months. Secondary outcomes were PHQ-9 score at 6 months and 18 months and Diagnostic and Statistical Manual of Mental Disorders IV major depressive and anxiety disorder status and number of depression-free days between follow-ups (SCID),<sup>9</sup> anxiety (Generalized Anxiety Disorder 7),<sup>17</sup> and health-related quality of life (36-Item Short Form Survey)<sup>18</sup> at 6 months, 12 months, and 18 months. For adverse events, we recorded deaths from whatever cause and all self-harm and suicide attempts. The independent Data Management Committee reviewed all adverse events and made relevant trial conduct recommendations.

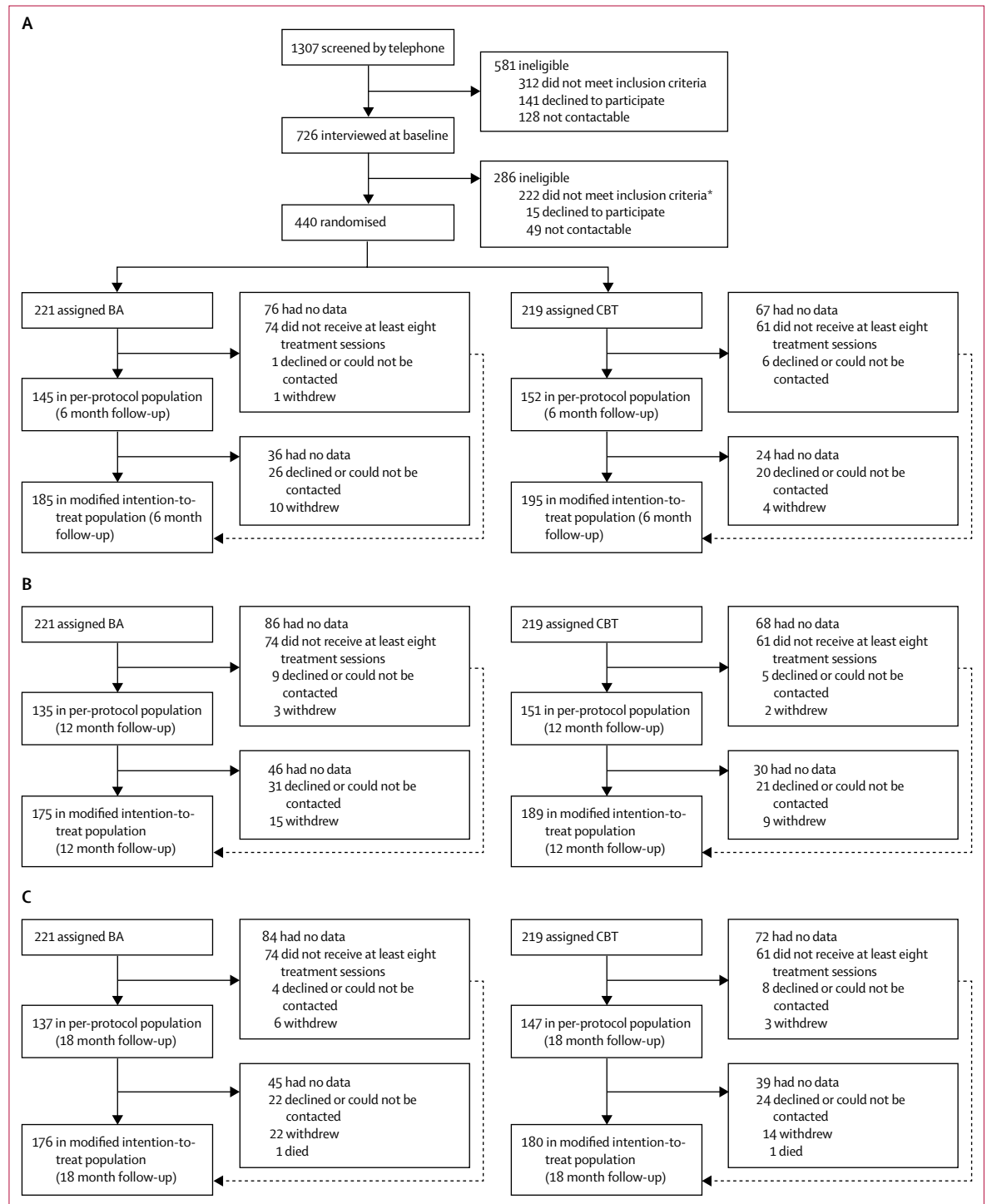
### Statistical analysis

Previous research has suggested that non-inferiority margins should be half of the mean controlled effect size

See Online for appendix

from historical trials.<sup>19</sup> Accordingly, we estimated the non-inferiority margin for the primary outcome using meta-analysis data from trials of BA<sup>14</sup> for which BA was superior to controls by a mean of 0.7 SD units (95% CI

0.39–1) or 3.8 PHQ-9 score units (2.1–5.4). Therefore, our non-inferiority margin was 1.9 PHQ-9 points (ie, 0.5 × 3.8). We inflated our sample size by 20% for participant follow-up attrition. We planned to recruit



**Figure 1: Trial profile**  
 (A) 6 month, (B) 12 month, and (C) 18 month follow-up. BA=behavioural activation. CBT=cognitive behavioural therapy. \*Includes four participants who were initially allocated in error and subsequently excluded.

220 participants per arm to detect a between-group non-inferiority margin of 1·9 PHQ-9 points with a one-sided 2·5%  $\alpha$ . Furthermore, although findings from a trial<sup>20</sup> of CBT have shown little effect of outcome clustering by therapists, the presence of a small therapist clustering effect (ie, an intraclass correlation coefficient of 0·01) would still provide the same power.

We did all analyses using a statistical analysis plan prepared in the first 6 months of the trial, agreed with the Trial Management Group, Trial Steering Committee, and Data Management Committee. We assessed between-group equivalence of baseline characteristics and outcomes descriptively and did a descriptive analysis of baseline characteristics by recruitment method.

We compared observed primary and secondary outcomes between groups 12 months after randomisation using linear regression models adjusted for baseline outcome values and stratification variables. We did modified intention-to-treat (mITT) and per-protocol (PP) analyses, as security of inference depends on both PP and intention-to-treat analyses showing non-inferiority.<sup>21</sup> PP analysis provides some protection for any theoretical increase in the risk of type I error (erroneously concluding non-inferiority). Our mITT population comprises all patients according to and included in random allocation with complete data. We defined the PP population as participants meeting the mITT definition and receiving at least eight treatment sessions (representing a minimally sufficient dose of therapy). We analysed safety in the mITT population. We did sensitivity analyses for our primary outcome and for different definitions of PP (eight, 12, 16, and 20 treatment sessions) to check security of inference of non-inferiority.

We accepted non-inferiority of BA to CBT (in a 0·025 level test) if the lower bound of the two-sided 95% CI (equivalent to the upper bound of one-sided 97·5% CI) was within the non-inferiority margin of -1·9 PHQ-9 points. We checked for non-equivalence of the primary outcome at all follow-up points using the same approach.

We did secondary analyses to compare groups at follow-up across 6 months, 12 months, and 18 months using hierarchical linear regression. To ease clinical interpretation, we calculated proportions of recovery (participants with PHQ-9 scores of  $\leq 9$ ) and response (50% reduction from baseline PHQ-9 scores). We ran sensitivity analyses to assess the likely effect of missing data using multiple imputation models. We did imputation by treatment group using chained equations to create 20 complete datasets under the assumption that data were missing at random.<sup>22</sup> Imputation models included covariates as defined for the primary analysis model and auxiliary variables that were predictive of outcomes. After analysis, we combined the effect estimates from the imputed datasets using Rubin's rule.<sup>23</sup> For economic analyses, we took the UK NHS and personal social services perspective consistent with the NICE reference

case,<sup>24</sup> also examining a wide societal perspective, adding productivity losses due to time off work in a sensitivity analysis. We collected participants' use of BA and CBT from clinical records, with additional resource information (eg, training, supervision, and other non-face-to-face activities) from therapists and trainers. We used the Adult Service Use Schedule to measure other health and social care services used, including psychotropic medications. We measured productivity losses using the absenteeism and presenteeism questions from the

	BA (n=221)	CBT (n= 219)	All (n=440)
<b>Trial characteristics</b>			
Method of recruitment			
Primary care	192 (87%)	190 (87%)	382 (87%)
IAPT	29 (13%)	29 (13%)	58 (13%)
<b>Patient characteristics</b>			
Age (years)	43·9 (14·1)	43·0 (14·1)	43·5 (14·1)
Sex			
Male	79 (36%)	71 (32%)	150 (34%)
Female	142 (64%)	148 (68%)	290 (66%)
Number of episodes of depression (including current)			
Mean	7·0 (15·0)	6·3 (13·8)	6·7 (14·4)
Median	3·0 (1-5)	2·0 (1-5)	3·0 (1-5)
Age of onset of first depression episode (years)	27·2 (15·0)	26·3 (13·5)	26·7 (14·2)
Duration of antidepressant treatment (weeks)*			
Mean; n	215 (817); 160	116 (480); 169	164 (666); 329
Median; n	21 (10-78); 160	18 (7-52); 169	19 (8-71); 329
At least one comorbid anxiety disorder	131 (59%)	141 (64%)	272 (62%)
Marital status			
Single	68 (31%)	59 (27%)	127 (29%)
Cohabiting (not married)	29 (13%)	25 (11%)	54 (12%)
Civil partnership	1 (<1%)	1 (<1%)	2 (<1%)
Married	84 (38%)	92 (42%)	176 (40%)
Divorced or separated	39 (18%)	42 (19%)	81 (18%)
Number of children			
0	74 (33%)	72 (33%)	146 (33%)
1	35 (16%)	31 (14%)	66 (15%)
2	67 (30%)	69 (32%)	136 (31%)
3	31 (14%)	27 (12%)	58 (13%)
$\geq 4$	14 (6%)	20 (9%)	34 (8%)
Level of education			
No qualifications	25 (11%)	30 (14%)	55 (13%)
GCEs or O Levels	36 (16%)	43 (20%)	79 (18%)
AS or A Levels	28 (13%)	22 (10%)	50 (11%)
NVQ or other vocational qualification	54 (24%)	71 (32%)	125 (28%)
Undergraduate degree	44 (20%)	35 (16%)	79 (18%)
Postgraduate degree	28 (13%)	14 (6%)	42 (10%)
Doctoral degree	2 (1%)	1 (<1%)	3 (1%)
Professional degree (eg, MD)	4 (2%)	3 (1%)	7 (2%)
Ethnicity			
White British	204 (92%)	197 (90%)	402 (91%)
Other	17 (8%)	22 (10%)	38 (9%)

(Table 1 continues on next page)



	BA (n=221)	CBT (n= 219)	All (n=440)
(Continued from previous page)			
<b>Stratification or minimisation variables</b>			
PHQ-9 category			
<19	118 (53%)	118 (54%)	236 (54%)
≥19	103 (47%)	101 (46%)	204 (46%)
Antidepressant use			
Yes	172 (78%)	173 (79%)	345 (78%)
No	49 (22%)	46 (21%)	95 (22%)
Site			
Devon	74 (33%)	73 (33%)	147 (33%)
Durham	79 (36%)	78 (36%)	157 (36%)
Leeds	68 (31%)	68 (31%)	136 (31%)

Data are n (%), mean (SD), or median (IQR), unless otherwise indicated. IAPT=Improving Access to Psychological Therapies. GCSE=General Certificate of Secondary Education. O Level=Ordinary Level. AS Level=Advanced Subsidiary Level. A Level=Advanced Level. NVQ=National Vocational Qualification. MD=Doctor of Medicine. PHQ-9=Patient Health Questionnaire 9. \*16 participants who reported that they were using antidepressant medication at baseline did not report duration of use (12 in the BA group and four in the CBT group).

**Table 1: Baseline characteristics**

Health and Work Performance Questionnaire.<sup>25</sup> We calculated effectiveness in terms of quality-adjusted life-years (QALYs) using the EuroQol-5D-3L measure of health-related quality of life.<sup>26</sup> We assigned health states from the EuroQol-5D-3L measure a utility score using responses from a representative sample of adults in the UK.<sup>27</sup> We calculated QALYs as the area under the curve defined by the utility values at baseline and each follow-up, assuming that utility score changes over time followed a linear path.

We compared the costs and cost-effectiveness of treatments at 18 months to capture the economic effect of events like relapse with unit costs from the 2013–14 financial year.<sup>28,29</sup> We discounted costs and QALYs in year 2 at 3·5%.<sup>24</sup> We used complete case analysis with missing data explored in a sensitivity analysis using multiple imputation with chained equations. We calculated the cost of each treatment using a microcosting (bottom-up) approach.<sup>30</sup> We based MHW costs on NHS Agenda for Change salary band five (salary range £21909–28462; US\$31662–41130; €27726–35993) for BA and band seven (£31383–41373; US\$45350–59786; €39738–52388) for CBT therapists and included employer National Insurance and pension contributions plus capital, administrative, and managerial costs. We calculated cost per h using standard working time assumptions,<sup>31</sup> weighted to account for time spent on non-patient-facing activities. We applied nationally applicable unit costs for other health and social care services.

We assessed cost-effectiveness in terms of QALYs using the net benefit approach.<sup>32</sup> We analysed differences in mean cost per participant at 18 months using parametric *t* tests, with the validity of results confirmed using bias-corrected, non-parametric bootstrapping.<sup>33</sup> We calculated incremental cost-effectiveness ratios and constructed cost-effectiveness planes using 1000 bootstrapped resamples

from regression models of total cost and outcome by treatment group. We used these bootstrapped replications to calculate the probability that each of the treatments is the optimal choice for different values a decision maker is willing to pay for a unit improvement in outcome, representing uncertainty around the cost and effectiveness estimates, with cost-effectiveness acceptability curves illustrating the probability that BA is cost-effective compared with CBT, dependent on willingness to pay per QALY.<sup>34</sup> We controlled for stratification variables and baseline values of the variables of interest, truncating data to exclude influential outliers—ie, cases with total costs in the 99th percentile that make a significant difference to the results. We did all analyses using Stata version 14.1. This trial is registered with the ISCRTN registry, number ISRCTN27473954.

### Role of the funding source

The funder of the study had no role in study design, data collection, data analysis, data interpretation, or writing of the report. DAR, RST, FCW, SB, SR, and BB had full access to all the data in the study and DAR had final responsibility for the decision to submit for publication.

### Results

Between Sept 26, 2012, and April 3, 2014, we recruited 440 participants, randomly allocating 221 (50%) to the BA group and 219 (50%) to the CBT group (figure 1). 175 (79%) participants were assessable for the primary outcome in the mITT population in the BA group compared with 189 (86%) in the CBT group, whereas 135 (61%) were assessable in the PP population in the BA group compared with 151 (69%) in the CBT group. We noted no evidence of a difference in patient characteristics between recruitment methods (appendix). Patient-level and trial-level characteristics at baseline were well balanced between groups (table 1). PHQ-9 score at baseline was negatively skewed, with a high proportion of participants scoring towards the upper end of the distribution (data not shown), but scores were similar between groups (table 2).

Ten MHWs provided BA (median 22 participants each [IQR 19–25]) and 12 therapists provided CBT (21 [13–23]). MHWs had a mean of 18 months mental health experience (SD 11) and CBT therapists had a mean of 22 months post-CBT qualification (24). We removed one CBT therapist from the trial in the early stages who did not meet acceptable competency. Participants received a mean of 11·5 BA sessions (7·8) or 12·5 CBT sessions (7·8). 305 participants (69%) completed the PP number of at least eight sessions (BA 147 [67%] patients, mean 16·1 sessions [SD 5·3]; CBT 158 [72%] patients, mean 16·4 sessions [5·4]); participants completing less than eight sessions (135 [31%]; BA 74 [33%], CBT 61 [28%]) completed a mean of 2·5 BA sessions (SD 1·9) or 2·6 CBT sessions (2·1). MHWs and therapists met acceptable competency standards: mean Quality of Behavioral

	CBT	BA	Observed data only		Observed and imputed data	
			Between-group difference	p value	Between-group difference	p value
<b>Primary outcome</b>						
PHQ-9						
Baseline	17.4 (4.8); 219	17.7 (4.8); 221	..	..	..	..
mITT	8.4 (7.5); 189	8.4 (7.0); 175	0.1 (-1.3 to 1.5)*	0.89	0.2 (-1.1 to 1.7)*	0.80
PP	7.9 (7.3); 151	7.8 (6.5); 135	0.0 (-1.5 to 1.6)*	0.99	0.0 (-1.6 to 1.6)*	0.99
<b>Secondary outcomes</b>						
GAD-7						
Baseline	12.6 (5.1); 219	12.7 (5.1); 221	..	..	..	..
mITT	6.3 (6.0); 176	6.4 (5.9); 161	-0.1 (-1.0 to 1.3)*	0.82	0.0 (-1.3 to 1.4)*	0.96
PP	6.0 (5.8); 146	5.9 (5.5); 129	0.01 (-1.3 to 1.2)*	0.95	-0.4 (-1.7 to 1.0)*	0.60
SCID number of depression-free days						
Baseline	..	..	..	..	..	..
mITT	129 (58); 160	120 (56); 150	9 (-3 to 23)*	0.13	7 (-7 to 20)*	0.27
PP	132 (55); 138	119 (55); 125	13 (0 to 26)*	0.06	8 (-4 to 21)*	0.21
SF-36v2 PCS						
Baseline	50.1 (13.1); 65	51.4 (11.9); 69	..	..	..	..
mITT	48.1 (12.2); 168	49.9 (11.6); 150	1.6 (-1.0 to 4.2)†	0.22	1.4 (-1.1 to 4.0)†	0.27
PP	48.0 (12.2); 144	49.9 (12.0); 125	1.6 (-1.3 to 4.4)†	0.28	1.3 (-1.5 to 4.1)†	0.36
SF-36v2 MCS						
Baseline	23.2 (9.4); 65	22.5 (7.8); 69	..	..	..	..
mITT	41.7 (14.1); 168	41.6 (14.0); 150	0.0 (-3.0 to 3.0)†	0.99	0.0 (-2.9 to 2.8)†	0.97
PP	42.9 (13.6); 144	42.3 (13.3); 125	-0.5 (-3.7 to 2.7)†	0.77	-0.6 (-3.8 to 2.7)†	0.73

Data are mean (SD); n or mean (95% CI). CBT=cognitive behavioural therapy. BA=behavioural activation. PHQ-9=Patient Health Questionnaire 9. mITT=modified intention to treat. PP=per protocol. GAD-7=Generalized Anxiety Disorder 7. SCID=Structured Clinical Interview for the Diagnostic and Statistical Manual of Mental Disorders, Fourth Edition. SF-36v2=36-Item Short Form Survey version 2. PCS=physical component summary. MCS=mental component summary. \*Models adjusted for baseline outcome score and stratification variables (symptom severity [PHQ-9 score of <19 vs ≥19], site [Devon, Durham, or Leeds], and antidepressant use [use or not]). †Models adjusted for stratification variables, but not baseline outcome score because of substantial missing data.

**Table 2: Primary and secondary outcomes at 12 months**

Activation Scale BA competence was 55 (7.5) and mean Revised Cognitive Therapy Scale for CBT competence was 37.9 (10.9).

We found no evidence of inferiority of PHQ-9 score at 12 months in either the mITT (CBT 8.4 PHQ-9 points [SD 7.5]; BA 8.4 PHQ-9 points [7.0]; mean difference 0.1 PHQ-9 points [95% CI -1.3 to 1.5];  $p=0.89$ ) or PP (CBT 7.9 PHQ-9 points [7.3]; BA 7.8 [6.5]; mean difference 0.0 [-1.5 to 1.6];  $p=0.99$ ) populations (table 2). The non-inferiority of BA to CBT was accepted for both the mITT and PP populations as the lower bound of the 95% CI (one-sided 97.5% CI) of the between-group mean difference lies within the non-inferiority margin of -1.9 PHQ-9 points (appendix). Although we initially planned to include therapist as a random-effects variable, given the low levels of observed clustering, we parsimoniously fitted our models without therapist as a variable. We checked for no inference difference with and without inclusion of a random-effects therapist term. We ruled out superiority of CBT to BA as the lower bound of the 95% CI included zero for the mITT and PP populations. The inference of non-inferiority was robust to

sensitivity analysis across different PP definitions. We found no evidence of a significant between-group treatment interaction across the mITT or PP populations with the primary outcome at 12 months as stratified by depression severity, antidepressants use, and recruitment site (appendix).

We found that BA was not different from CBT in anxiety (Generalized Anxiety Disorder 7), depression status, and depression-free days and anxiety diagnoses (SCID) for either the mITT or PP populations using observed or imputed data at 12 months (table 2). Because of substantial missing 36-Item Short Form Survey data at baseline, we analysed these data adjusted for stratification variables only. We found no difference in numbers of participants with at least one anxiety diagnosis: BA 43 (28%) of 153; CBT 43 (27%) of 161 (mITT population;  $\chi^2 0.08$ ;  $p=0.78$ ).

Between 61% and 70% of mITT and PP participants in both groups met criteria for recovery from depression or response to treatment at 12 months, with no differences in the proportions of patients in each group who recovered or responded (table 3). Using observed data for all outcomes, we found no evidence of a difference



between the CBT and BA groups over the period of the trial, as indicated by a non-significant time-by-treatment effect interaction, for both the mITT and PP populations (appendix). We found a small, negligible clustering of primary and secondary outcome scores at follow-up across therapists overall and within BA and CBT groups (intracluster correlation coefficient  $\leq 0.04$ ).

Two (1%) non-trial-related deaths (one [1%] multidrug toxicity in the BA group and one [1%] cancer in the CBT group) and 15 depression-related, but not treatment-related, serious adverse events (three in the BA group and 12 in the CBT group) occurred in three [2%] participants in the BA group (two [1%] patients who overdosed and one [1%] who self-harmed) and eight (4%) participants in the CBT group (seven [4%] who overdosed and one [1%] who self-harmed). Of the 440 participants recruited, 76 (17%) had missing primary outcome data at 12 month follow-up. The proportion of missing PHQ-9

data was higher in the BA than in the CBT group (46 [21%] vs 30 [14%]; odds ratio 1.6 [95% CI 1.0–2.7];  $p=0.05$ ). Imputation of data for primary and secondary outcomes at 12 months showed that in accordance with the observed data analysis, no difference existed between groups (tables 2, 3), supporting our conclusion of non-inferiority. The odds of missing PHQ-9 data were higher for patients with increased baseline severity of depression (PHQ  $\geq 19$ , odds ratio 1.6 [95% CI 1.0–2.6];  $p=0.05$ ) and increasing age (in years) was associated with lower odds of missing PHQ-9 data (odds ratio 0.97 [0.96–0.99];  $p=0.01$ ). We found no evidence of an association between missingness and any other baseline characteristic (data not shown). Outcome assessors reported having been unmasked for 16 (4%) participants (five [2%] in the BA group and 11 [5%] in the CBT group; due to participants informing assessors of their treatment allocation).

For economic analyses, at 18 months, full service use data was available for 159 (90%) of 176 participants in the BA group and 168 (93%) of 180 participants in the CBT group. We found a significant difference in mean intervention costs between the two groups, but no differences in other categories of cost or in total cost (table 4). Mean health state utility scores according to EuroQoL-5D-3L were slightly higher in the BA group than in the CBT group across the entire follow-up period, with resultant QALYs also higher for BA, but the QALY difference was not significant. Costs were lower and QALY outcomes better in the BA group than in the CBT group, generating an incremental cost-effectiveness ratio of  $-\pounds 6865$ . The scatterplot of bootstrapped cost and effectiveness pairs for BA versus CBT illustrates dominance of BA over CBT, with the point estimate and two-thirds of scatter points falling in the southeast quadrant of the cost-effectiveness plane, where BA replications are cheaper and more effective than are CBT ones (figure 2). The cost-effectiveness acceptability curve (appendix) showing the probability of BA being cost-effective compared with CBT does not fall below 75% and

	CBT	BA	Observed data only		Observed and imputed data	
			Odds ratio	p value	Odds ratio	p value
<b>SCID depression</b>						
Baseline	219/219 (100%)	221/221 (100%)				
mITT	37/163 (23%)	31/154 (20%)	0.9 (0.5–1.6)	0.71	0.9 (0.5–1.6)	0.70
PP	30/141 (21%)	24/128 (19%)	0.9 (0.5–1.7)	0.80	0.9 (0.5–1.7)	0.75
<b>Depression recovery*</b>						
mITT	124/189 (66%)	115/175 (66%)	1.0 (0.6–1.5)	0.96	1.2 (0.7–1.9)	0.53
PP	104/151 (69%)	94/135 (70%)	1.0 (0.6–1.7)	0.96	1.2 (0.7–2.0)	0.47
<b>Depression response†</b>						
mITT	117/189 (62%)	107/175 (61%)	1.0 (0.9–1.1)	0.73	0.9 (0.6–1.4)	0.75
PP	100/151 (66%)	87/135 (64%)	0.9 (0.9–1.0)	0.64	0.9 (0.5–1.4)	0.55

Data are n/N (%) or odds ratio (95% CI). CBT=cognitive behavioural therapy. BA=behavioural activation. SCID=Structured Clinical Interview for the Diagnostic and Statistical Manual of Mental Disorders, Fourth Edition. mITT=modified intention to treat. PP=per protocol. \*Participants with Patient Health Questionnaire 9 scores of 9 or less. †Participants with a 50% reduction from baseline in Patient Health Questionnaire 9 score.

Table 3: Depression status, recovery, and response at 12 months

	BA	CBT	Difference	p value
<b>Costs per participant (£)</b>				
Intervention	£974.81 (475.02); 159	£1235.23 (610.03); 168	-£262.29 (-381.40 to -143.19)	<0.0001
Hospital	£860.23 (1509.88); 159	£927.26 (1975.64); 168	-£75.67 (-451.75 to 300.42)	0.69
Community health and social care	£644.36 (816.07); 159	£944.25 (1726.17); 168	-£15.14 (-304.90 to 274.62)	0.91
Medication	£103.20 (197.92); 159	£117.64 (265.92); 168	£2.15 (-39.83 to 44.13)	0.92
Total	£2596.62 (1846.72); 159	£3250.74 (3040.99); 168	-£343.24 (-857.62 to 171.13)	0.19
<b>EQ-5D-3L utility score</b>				
Baseline	0.548 (0.307); 159	0.474 (0.317); 168	..	..
6 months	0.683 (0.310); 153	0.677 (0.310); 151	..	..
12 months	0.684 (0.341); 147	0.671 (0.348); 156	..	..
18 months	0.670 (0.311); 152	0.624 (0.335); 157	..	..
QALYs	0.985 (0.422); 152	0.935 (0.433); 157	0.050 (-0.046 to 0.145)	0.31

Data are mean (SD); n or mean difference (95% CI). BA=behavioural activation. CBT=cognitive behavioural therapy. EQ=EuroQoL. QALY=quality-adjusted life-year.

Table 4: Economic data at 18 months

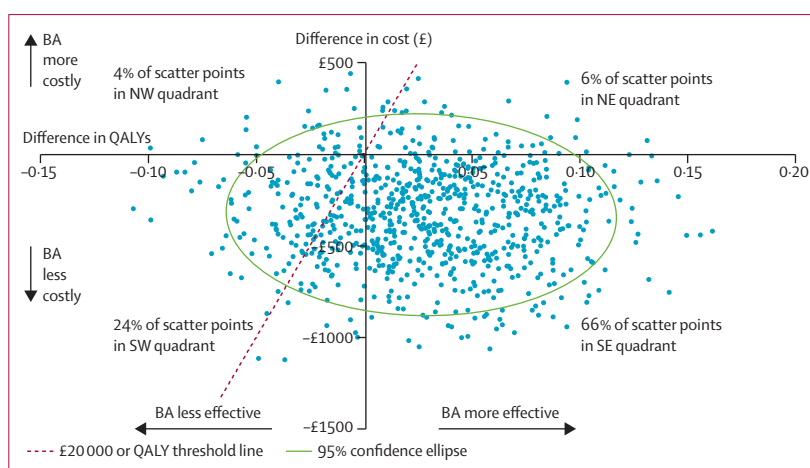
is closer to 80% at NICE-preferred willingness<sup>24</sup> to pay £20 000–30 000 per QALY.

In all sensitivity analyses, including complementary therapies and productivity losses, as well as analyses taking narrow intervention and mental health service perspectives, BA was significantly less costly than was CBT, so BA continues to have a higher probability of being cost-effective than does CBT at the NICE threshold (appendix).<sup>24</sup> Imputation of missing data increased the difference in total cost (BA £1841.67; CBT £2282.40; difference -£440.73 [95% CI -1007.71 to 126.26];  $p=0.13$ ), but reduced the difference in QALYs (BA 1.22; CBT 1.19; difference 0.03 [-0.06 to 0.11];  $p=0.55$ ), increasing the incremental cost-effectiveness ratio to -£16 951. The cost-effectiveness acceptability curve for the missing data analysis again supported the likelihood that BA is cost-effective compared with CBT (appendix).

## Discussion

We found that BA for depression is not inferior to CBT in terms of reduction of depression symptoms and is more cost-effective than is CBT against commonly applied decision maker willingness to pay thresholds. We observed our results using both MITT and PP analyses, using a conservative non-inferiority margin. Our economic analyses were driven by the lower costs of the MHWs who delivered BA compared with the more experienced psychological therapists who routinely deliver CBT. Our study results therefore substantiate the hypothesis that BA is as effective as is CBT and that its simplicity renders BA suitable for delivery by junior MHWs with no professional training in psychological therapies.<sup>5</sup>

This trial is the largest trial of BA to date and is one of the largest trials of psychological treatments for depression. We followed up participants for 18 months and our economic analysis is one of few in this field. Therapists and MHWs working in three different routine UK care settings delivered treatment, providing evidence of potential generalisability. We assessed therapy quality using independent raters and ensured that treatment in both arms was delivered to the standard recommended guidelines. Our levels of attrition and outcome loss to follow-up were low at 12 months and 18 months, similar to other trials in this area, but are still a limitation. Although participants in the per-protocol population attended similar numbers of sessions to those in other CBT trials,<sup>15</sup> 35% of participants chose to not even attend a minimal number of sessions, a problem well known to routine psychological therapy services. This pragmatic trial done in routine environments means that we were unable to quantify or control for the contribution of antidepressant medicines to outcomes. However, most participants who were taking medication had been doing so for a considerable time before entering the trial, making it unlikely that our results were driven by pharmacological treatment. Given the nature of the intervention and comparator, we could not mask patients



**Figure 2: Bootstrapped mean differences in costs and effects of BA compared with CBT**

BA=behavioural activation. CBT=cognitive behavioural therapy. NE=northeast. NW=northwest. SE=southeast. SW=southwest. QALY=quality-adjusted life-year.

or the mental health workers or therapists who were delivering the interventions to treatment allocation, but we used self-reported outcome measures and robust outcome assessor-masking procedures to reduce researcher unmasking to less than 5%. Missing data for the primary outcome measure was substantial. However, our between-group inferences were robust to data imputation.

Our findings could have substantial implications for the scalability of psychological treatment for depression internationally<sup>4</sup> given the greater availability and ease with which a BA workforce could be trained than could a CBT workforce. For many years, CBT has been the foremost psychological therapy recommended by therapists, researchers, and policy makers. Our results challenge this dominance. Although more work needs to be done than has been done so far to find ways to effectively treat the 20–23% of patients whose depression was unchanged by BA or CBT, our findings suggest that BA should be a front-line treatment for depression, with substantial potential to improve reach and access to psychological therapy globally.

Our results in both groups compare favourably with a meta-analysis<sup>3</sup> of the effects of CBT that estimate proportions of patients with remissions of around 50%. Our cost-effectiveness analyses show the high probability that BA is cost-effective and affordable compared with CBT at standard willingness to pay thresholds. Our most striking finding is that BA leads to similar clinical outcomes for patients with depression, but at a financial saving to clinical providers of 21% compared with the costs of provision of CBT, with no compensatory use of other health-care services by patients.

Driving these savings is the fact that BA can be delivered by inexperienced MHWs with no professional training in psychological therapies, with no lesser effect than that of more highly trained and experienced psychological

therapists giving patients CBT. Although many obstacles exist to successful dissemination in addition to training of MHWs, our findings suggest that health services globally could reduce the need for costly professional training and infrastructure, reduce waiting times, and increase access to psychological therapies.<sup>4</sup> Our findings have substantial implications given the increasing global pressure for cost containment across health systems in high-income countries and the need to develop accessible, scalable interventions in low-income and middle-income countries. Such countries might choose to investigate the training and employment of junior workers over expensive groups of psychological professionals. Our results, therefore, offer hope to many societies, cultures, and communities worldwide, rich and poor, struggling with the effect of depression on the health of their people and economies.

#### Contributors

DAR, DE, DM, RST, SB, PAF, SG, WK, HO'M, ERW, and KAW designed the study and were responsible for its conduct. SR, EF, and KF were responsible for study and data collection management. RST, SB, FCW, and BB did data analysis. SDH and NR provided expert advice on clinical and patient and public involvement. All authors contributed to writing and editing of the manuscript.

#### Declaration of interests

All authors report grants from the National Institute for Health Research (NIHR) during the course of the study. DAR reports grants from the European Science Foundation. DAR and RST have received funding support from NIHR Collaborations for Leadership in Applied Health Research and Care and report NIHR panel memberships. WK reports fees from book royalties.

#### Acknowledgments

This report is independent research funded by the UK National Institute for Health Research (NIHR) Health Technology Assessment Programme. The views expressed in this publication are those of the authors and not necessarily of the NIHR or UK Department of Health. We would like to thank all participants, National Health Service services, mental health workers, therapists, and general practitioners involved in the study and acknowledge the vital contributions of study researchers and administrators in Devon, Durham, and Leeds, the Peninsula Clinical Trials Unit, and the NIHR Clinical Research Network.

#### References

- Ferrari AJ, Charlson FJ, Norman RE, et al. Burden of depressive disorders by country, sex, age, and year: findings from the global burden of disease study 2010. *PLoS Med* 2013; **10**: e1001547.
- Bloom DE, Cafiero ET, Jané-Llopis E, et al. The global economic burden of noncommunicable diseases. Geneva: World Economic Forum, 2011.
- Amick HR, Gartlehner G, Gaynes BN, et al. Comparative benefits and harms of second generation antidepressants and cognitive behavioral therapies in initial treatment of major depressive disorder: systematic review and meta-analysis. *BMJ* 2015; **351**: h6019.
- Kohn R, Levav I, de Almeida JM, et al. The treatment gap in mental health care. *Bull World Health Organ* 2004; **82**: 858–66 (in Spanish).
- Jacobson NS, Martell CR, Dimidjian S. Behavioral activation treatment for depression: returning to contextual roots. *Clin Psychol Sci Pract* 2001; **8**: 255–70.
- Ekers D, Webster L, Van Straten A, Cuijpers P, Richards D, Gilbody S. Behavioural activation for depression; an update of meta-analysis of effectiveness and sub group analysis. *PLoS One* 2014; **9**: e100100.
- Shinohara K, Honyashiki M, Imai H, et al. Behavioural therapies versus other psychological therapies for depression. *Cochrane Database Syst Rev* 2013; **10**: CD008696.
- National Institute for Health and Care Excellence. Depression in adults: recognition and management. London: National Institute for Health and Care Excellence, 2009.
- First MB, Spitzer RL, Gibbon M, Williams JB. Structured Clinical Interview for DSM-IV-TR Axis I Disorders, Research Version, Patient Edition. (SCID-I/P). New York: New York State Psychiatric Institute, 2002.
- Rhodes S, Richards DA, Ekers D, et al. Cost and outcome of behavioural activation versus cognitive behaviour therapy for depression (COBRA): study protocol for a randomised controlled trial. *Trials* 2014; **15**: 29.
- Kroenke K, Spitzer RL, Williams JB. The PHQ-9: validity of a brief depression severity measure. *J Gen Intern Med* 2001; **16**: 606–13.
- Beck J. Cognitive therapy: basics and beyond. New York: Guilford Press, 1995.
- Addis E, Martell CR. Overcoming depression one step at a time. Oakland: New Harbinger, 2004.
- Ekers D, Richards D, McMillan D, Bland JM, Gilbody S. Behavioural activation delivered by the non-specialist: phase II randomised controlled trial. *Br J Psychiatry* 2011; **198**: 66–72.
- Wiles N, Thomas L, Abel A, et al. Cognitive behavioural therapy as an adjunct to pharmacotherapy for primary care based patients with treatment resistant depression: results of the CoBaIT randomised controlled trial. *Lancet* 2013; **381**: 375–84.
- Blackburn IM, James IA, Milne DL, et al. The Revised Cognitive Therapy Scale (CTS-R): psychometric properties. *Behav Cogn Psychother* 2001; **29**: 431–46.
- Spitzer RL, Kroenke K, Williams JB, Löwe B. A brief measure for assessing generalized anxiety disorder: the GAD-7. *Arch Intern Med* 2006; **166**: 1092–97.
- Ware JE, Snow KK, Kosinski M, Gandek B. SF-36 health survey: manual and interpretation guide. Boston: The Health Institute, New England Medical Center, 1993.
- European Medicines Agency Committee For Medicinal Products For Human Use (CHMP). Guideline on the choice of the non-inferiority margin. [http://www.ema.europa.eu/docs/en\\_GB/document\\_library/Scientific\\_guideline/2009/09/WC500003636.pdf](http://www.ema.europa.eu/docs/en_GB/document_library/Scientific_guideline/2009/09/WC500003636.pdf) (accessed July 4, 2016).
- Kuyken W, Byford S, Taylor RS, et al. Mindfulness-based cognitive therapy to prevent relapse in recurrent depression. *J Consult Clin Psychol* 2008; **76**: 966–78.
- European Agency for the Evaluation of Medicinal Products. Points to consider on switching between superiority and non-inferiority. [http://www.ema.europa.eu/docs/en\\_GB/document\\_library/Scientific\\_guideline/2009/09/WC500003658.pdf](http://www.ema.europa.eu/docs/en_GB/document_library/Scientific_guideline/2009/09/WC500003658.pdf) (accessed July 4, 2016).
- van Buuren S. Multiple imputation of discrete and continuous data by fully conditional specification. *Stat Methods Med Res* 2007; **16**: 219–42.
- Rubin DB. Multiple imputation for nonresponse in surveys. New York: John Wiley & Sons, 1987.
- National Institute for Health and Care Excellence. Guide to the methods of technology appraisal 2013. London: National Institute for Health and Care Excellence, 2013.
- Kessler RC, Barber C, Beck A, et al. The World Health Organization Health and Work Performance Questionnaire (HPQ). *J Occup Environ Med* 2003; **45**: 156–74.
- Brooks R. EuroQol: the current state of play. *Health Policy* 1996; **37**: 53–72.
- Dolan P, Gudex C, Kind P, Williams A. A social tariff for EuroQoL: results from a UK general population survey. York: University of York, 1995.
- Department of Health. Reference costs 2013–14. London: Department of Health, 2014.
- Curtis L. Unit costs of health and social care 2013. Canterbury: Personal Social Services Research Unit, 2013.
- Netten A, Knight J, Dennett J, Cooley R, Slight A. A ready reckoner for staff costs in the NHS. Canterbury: University of Kent, 1998.
- Curtis L. Unit costs of health and social care 2014. Canterbury: University of Kent, 2014.
- Stinnett AA, Mullahy J. Net health benefits: a new framework for the analysis of uncertainty in cost-effectiveness analysis. *Med Decis Making* 1998; **18** (suppl 2): S68–80.
- Thompson SG, Barber JA. How should cost data in pragmatic randomised trials be analysed? *BMJ* 2000; **320**: 1197–200.
- Fenwick E, Byford S. A guide to cost-effectiveness acceptability curves. *Br J Psychiatry* 2005; **187**: 106–08.