



King's Research Portal

DOI:

[10.1186/s12968-016-0285-7](https://doi.org/10.1186/s12968-016-0285-7)

Document Version

Publisher's PDF, also known as Version of record

[Link to publication record in King's Research Portal](#)

Citation for published version (APA):

Tandon, A., James, L., Henningsson, M., Botnar, R. M., Potersnak, A., Greil, G. F., & Hussain, T. (2016). A clinical combined gadobutrol bolus and slow infusion protocol enabling angiography, inversion recovery whole heart, and late gadolinium enhancement imaging in a single study. *Journal of Cardiovascular Magnetic Resonance*, 18(1), 66. <https://doi.org/10.1186/s12968-016-0285-7>

Citing this paper

Please note that where the full-text provided on King's Research Portal is the Author Accepted Manuscript or Post-Print version this may differ from the final Published version. If citing, it is advised that you check and use the publisher's definitive version for pagination, volume/issue, and date of publication details. And where the final published version is provided on the Research Portal, if citing you are again advised to check the publisher's website for any subsequent corrections.

General rights

Copyright and moral rights for the publications made accessible in the Research Portal are retained by the authors and/or other copyright owners and it is a condition of accessing publications that users recognize and abide by the legal requirements associated with these rights.

- Users may download and print one copy of any publication from the Research Portal for the purpose of private study or research.
- You may not further distribute the material or use it for any profit-making activity or commercial gain
- You may freely distribute the URL identifying the publication in the Research Portal

Take down policy


If you believe that this document breaches copyright please contact librarypure@kcl.ac.uk providing details, and we will remove access to the work immediately and investigate your claim.

TECHNICAL NOTES

Open Access



A clinical combined gadobutrol bolus and slow infusion protocol enabling angiography, inversion recovery whole heart, and late gadolinium enhancement imaging in a single study

Animesh Tandon^{1,2,3*} , Lorraine James^{1,3}, Markus Henningson⁴, René M. Botnar^{4,5}, Amanda Potersnak³, Gerald F. Greil^{1,2,3} and Tarique Hussain^{1,2,3}

Abstract

Background: The use of gadolinium contrast agents in cardiovascular magnetic resonance is well-established and serves to improve both vascular imaging as well as enable late gadolinium enhancement (LGE) imaging for tissue characterization. Currently, gadofosveset trisodium, an intravascular contrast agent, combined with a three-dimensional inversion recovery balanced steady state free precession (3D IR bSSFP) sequence, is commonly used in pediatric cardiac imaging and yields excellent vascular imaging, but cannot be used for late gadolinium enhancement. Gadofosveset use remains limited in clinical practice, and manufacture was recently halted, thus an alternative is needed to allow 3D IR bSSFP and LGE in the same study.

Methods: Here we propose a protocol to give a bolus of 0.1 mL/kg = 0.1 mmol/kg gadobutrol (GADAVIST/GADOVIST) for time-resolved magnetic resonance angiography (MRA). Subsequently, 0.1 mmol/kg is diluted up to 5 or 7.5 mL with saline and then loaded into intravenous tubing connected to the patient. A 0.5 mL short bolus is infused, then a slow infusion is given at 0.02 or 0.03 mL/s. Image navigated (iNAV) 3D IR bSSFP imaging is initiated 45–60 s after the initiation of the infusion, with a total image acquisition time of ~5 min. If necessary, LGE imaging using phase sensitive inversion recovery reconstruction (PSIR) is performed at 10 min after the infusion is initiated.

Results: We have successfully performed the above protocol with good image quality on 10 patients with both time-resolved MRA and 3D IR bSSFP iNAV imaging. Our initial attempts to use pencil beam respiratory navigation failed due to signal labeling in the liver by the navigator. We have also performed 2D PSIR LGE successfully, with both LGE positive and LGE negative results.

Conclusion: A bolus of gadobutrol, followed later by a slow infusion, allows time-resolved MRA, 3D IR bSSFP using the iNAV navigation technique, and LGE imaging, all in a single study with a single contrast agent.

Keywords: Congenital heart disease, Gadobutrol, Time-resolved magnetic resonance angiography, Steady state magnetic resonance angiography, Late gadolinium enhancement

* Correspondence: Animesh.Tandon@UTSouthwestern.edu

¹Department of Pediatrics, University of Texas Southwestern Medical Center, 5323 Harry Hines Blvd, Dallas 75390, Texas, USA

²Department of Radiology, University of Texas Southwestern Medical Center, 5323 Harry Hines Blvd, Dallas 75390, Texas, USA

Full list of author information is available at the end of the article



Background

Delineation of vascular structures is an especially important part of cardiovascular magnetic resonance (CMR) in congenital heart disease (CHD), due to the frequency of vascular lesions. Current techniques for vascular imaging in CHD are in three major groups:

- Non-contrast three-dimensional (3D), ECG and respiratory navigated, T2-prepared, fat saturated imaging with a balanced steady-state free precession readout (3D T2-prep bSSFP).
- Contrast-enhanced non-gated conventional or time-resolved magnetic resonance angiography (MRA).
- And intravascular contrast-enhanced, 3D, ECG and respiratory navigated, fat saturated imaging with an inversion recovery pulse and balanced steady-state free precession readout (3D IR bSSFP) [1, 2].

This latter technique has been shown to be superior to non-contrast 3D T2-prep bSSFP with both intravascular and extravascular contrast agents [2], and to IR gradient recovery echo sequences [3]. The use of image navigation (iNAV) as opposed to pencil beam navigation further improves the image quality [4]. Thus, the standard of care for imaging at our center was gadofosveset trisodium (ABLAVAR, Lantheus Medical Imaging, N. Billerica, MA)-enhanced 3D IR bSSFP imaging. However, due to gadofosveset trisodium's albumin binding, the kinetics are such that they preclude late gadolinium enhancement (LGE) imaging in the same study.

Gadofosveset is approved for use, but there is currently a disruption in manufacturing (August 1, 2016 (manufacturer communication)). Furthermore, clinical use of this contrast agent was not ubiquitous. Gadobenate dimeglumine (MultiHance, Bracco Diagnostic, Milano, Italy) has been shown to produce similar images as gadofosveset [5] given its partial albumin binding characteristics, but given its linear nature, there are theoretical concerns regarding a higher risk of central nervous system deposition [6] and nephrogenic systemic fibrosis (NSF) than with macrocyclic gadolinium compounds [7]. Gadobutrol (GADAVIST (Bayer Healthcare Pharmaceuticals, Whippany, NJ) or GADOVIST (Bayer Schering Pharma, Berlin, Germany)) is a macrocyclic, ionic gadolinium-containing contrast agent with no known cases of NSF and no protein-binding characteristics [7], and is FDA-approved in adult and pediatric patients (including term neonates) to detect and visualize areas with disrupted blood brain barrier and/or abnormal vascularity of the central nervous system, and for use in magnetic resonance angiography (MRA) in adult and pediatric patients (including term neonates) to evaluate known or suspected supra-aortic or renal artery disease [8]. Gadobutrol has shown equal efficacy for LGE imaging as compared to Gd-DTPA [9].

To address the current disruption of gadofosveset manufacture, we devised a method of dosing gadobutrol in order to achieve high-quality 3D IR bSSFP images while also allowing LGE imaging. Our team was inspired by Dabir et al. (2012) [10], who performed multi-dynamic first-pass MRA followed by single-phase T1-weighted 3D inversion recovery imaging with ECG triggering and respiratory navigator gating. However, they used a 3 Tesla MR scanner and a SENSE acceleration factor of 4, while our protocol used a lower SENSE acceleration factor of 2 at 1.5 Tesla. The novelty of the current study was the use of image navigated respiratory motion correction that further accelerated 3D IR bSSFP image acquisition, since a user-defined scan efficiency can be chosen prior to the scan [11]. In addition, the injector set up of this protocol allows a slow infusion protocol using a commonly available injector, without the need for a separate infusion pump; the use of the injector pump set-up was inspired by Ishida et al. (2011) [12]. The practicality of this protocol makes it easily applied in everyday practice.

Methods

Study population

Consecutive patients undergoing contrast-enhanced CMR with a clinical indication for 3D whole-heart imaging at our institution had the protocol performed. We have IRB approval for retrospective use of clinically-obtained data, and there is a waiver of consent.

Equipment setup

The CMR studies were performed on an Ingenia 1.5 Tesla scanner (Philips, Best, The Netherlands) with the 32-channel phased array digital receiver coil for signal reception. The contrast power injector was a Medrad Spectris Solaris EP (Bayer, Whippany, NJ). The intravenous (IV) tubing used was Medex 450FL 20 in., APV = 2.4 mL (Smiths Medical ASD Inc., Dublin, OH).

An IV line is placed before the examination for contrast administration. Extension tubing is connected between the end of the injector line and the IV line connected to the patient (Figs. 1 and 2 explain the overall contrast and injector use; Fig. 1a defines extension tubing set-up); either 2 pieces (if patient was under 50 kg) or 3 pieces (if patient was over 50 kg). This provides ~5 or 7.5 mL of IV tubing volume between the injector and the patient. A three-way stopcock is attached between the injector and extension tubing. Both pumps of the power injector are loaded with saline.

CMR protocol

Initial and gadobutrol bolus time-resolved MRA

Standard bSSFP cine imaging is performed at the beginning of the study (Fig. 3), followed by phase contrast

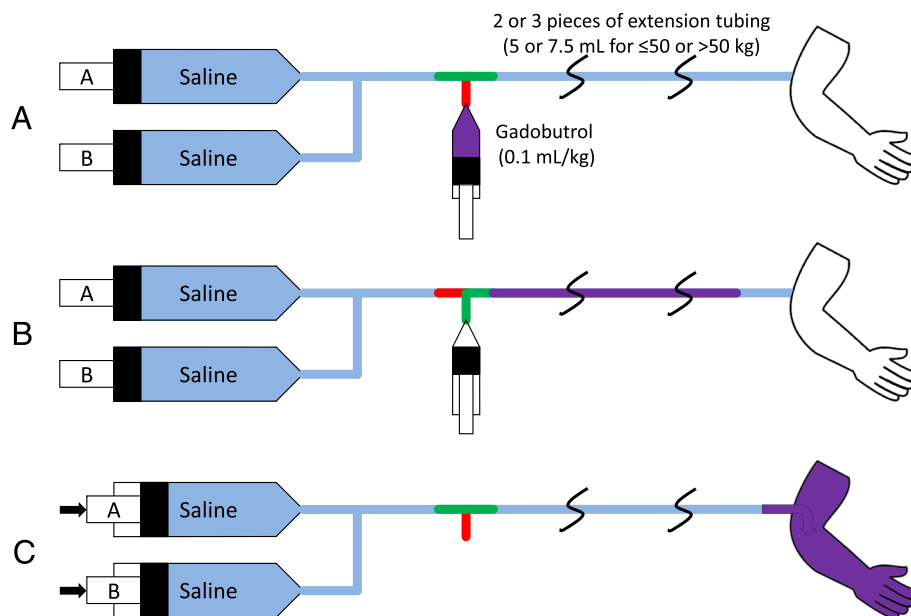


Fig. 1 Gadobutrol bolus infusion setup. **a** Intravenous (IV) extension tubing is connected between the end of the injector line and the IV connected to the patient; either 2 pieces (if patient is ≤ 50 kg) or 3 pieces (if patient is >50 kg). This provides 5 or 7.5 mL of IV tubing volume between the injector and the patient, respectively. A three-way stopcock is attached between the injector and extension tubing. Both pumps of the power injector are loaded with saline. **b** When the patient is ready for time-resolved MRA, the technician turns the stopcock off to the injector, and 0.1 mL/kg undiluted gadobutrol is infused into the extension tubing. The power injector is set for pump A to inject 10 mL at 2 mL/s, and pump B is set to inject 20 mL/s at 2 mL/s. The stopcock is then turned back to allow flow from injector to patient. **c** Injection is then started at the appropriate time, and thus the contrast in the tubing is injected into the patient

imaging. At the time of time-resolved MRA, undiluted gadobutrol is loaded into the tubing through the stopcock (Fig. 1b). At the appropriate time, the injection is started for time-resolved MRA. The gadobutrol in the extension tubing is thus injected into the patient. After time-resolved MRA, contrast-neutral imaging such as further phase contrast or bSSFP imaging is performed (Fig. 3).

Gadobutrol slow infusion

When the patient is ready for 3D IR bSSFP iNAV imaging, the patient is prepared for gadobutrol slow infusion, as shown in Fig. 2a. In short, diluted gadobutrol is loaded into the IV extension tubing through the stopcock. The 3D IR bSSFP iNAV sequence is set up to image for approximately 2 to 2.5 min with gating efficiency = 50 % (total imaging time 4 to 5 min). Field of view and voxel size are usually manipulated to get the correct imaging time; representative sequence parameters include repetition time/echo time (TR/TE) = 3.7/1.86 ms, flip angle = 70°, field-of-view (FOV) = 320 × 320 × 120 mm, voxel size = 1.5 × 1.5 × 1.5 mm, k space profile order was centric (low-high), SENSE factor = 2, inversion time = 220 ms (if run in systole) or 240 ms (if run in diastole) [4]. This sequence may be run in systole or diastole,

depending on clinical indication, heart rate, and duration of the quiescent phases in the cardiac cycle [13].

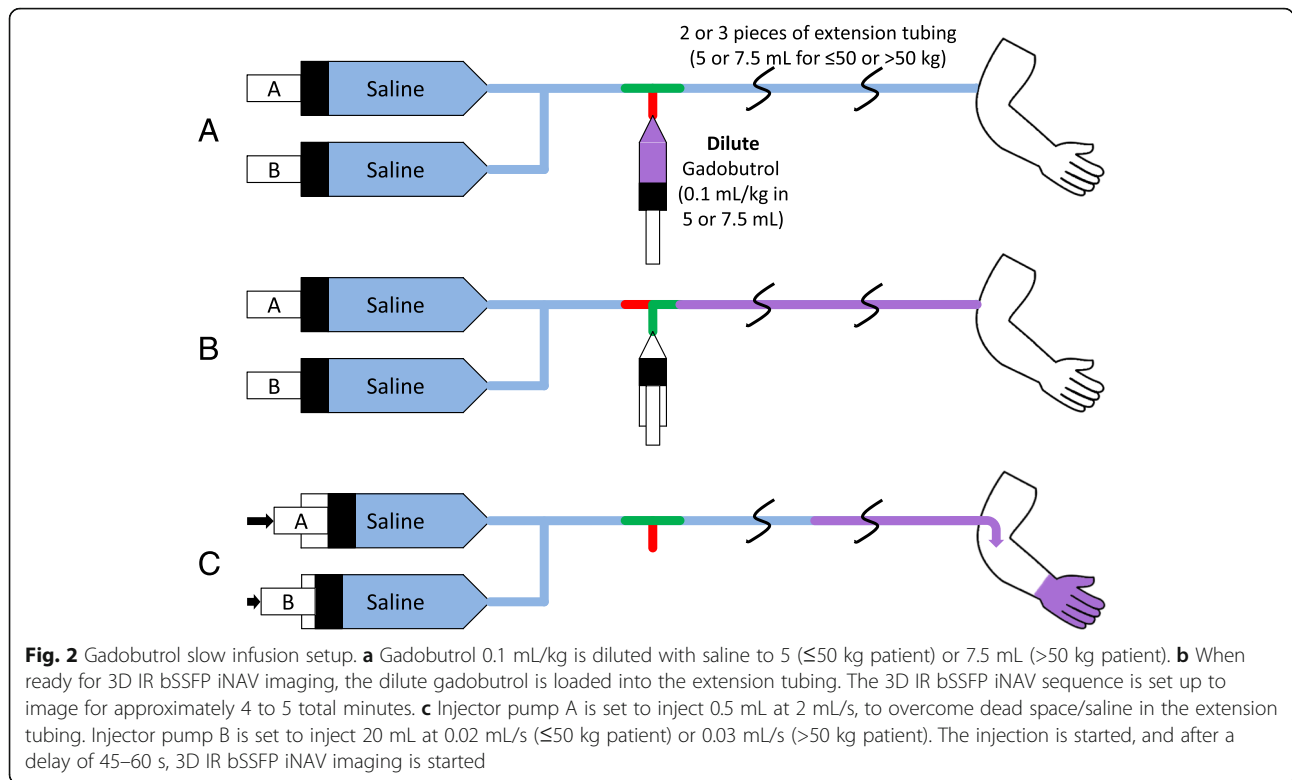
When the 3D IR bSSFP iNAV is ready to run, the continuous infusion is started, and then after a 45–60 s delay, the imaging is started, as detailed in Figs. 2b, c, and 3. The pump rates suggested give about 225–234 s of injection of the contrast itself, followed by flush. The imaging sequence time extends beyond the time the contrast is infusing, but the initial delay between starting the injection and starting the imaging seems to allow the gadobutrol to build to a sufficient blood level.

Late gadolinium enhancement imaging

After the 3D IR bSSFP imaging is complete, further post-contrast imaging can be performed. At 10 to 15 min after the start of the infusion, 2D phase-sensitive inversion recovery (PSIR) LGE imaging can be performed, if necessary; representative sequence parameters include repetition time/echo time (TR/TE) = 5.5/6 ms, flip angle = 25°, echo train length = 22, in-plane resolution = 1.9 × 1.9 mm, slice thickness = 8 mm.

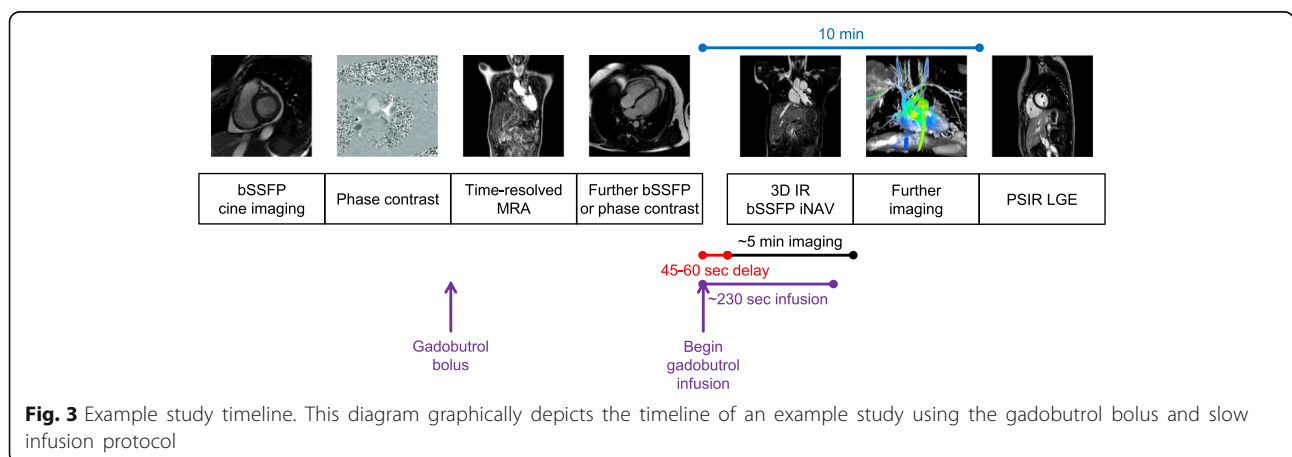
Results

We successfully completed both time-resolved MRA and 3D IR bSSFP iNAV imaging with the above technique for 10 patients (Fig. 4) with a variety of diagnoses including: pulmonary stenosis and sinus venosus atrial septal



defect (ASD) status post surgical intervention (Fig. 4a, b); hypoplastic right pulmonary artery (RPA) with severe distal RPA stenosis, secundum ASD, coronary sinus septal defect (Fig. 4c, d); and bicuspid aortic valve with dilated aortic root (Fig. 4e, f). The patient age ranged from 4.7 to 29.4 years (median 11.7 years); weight ranged from 15.1 to 92.4 kg (median 29.6 kg); body surface area was 0.64 to 2.02 m² (median 1.10 m²); heart rate was 60–101 beats per minute (median 79); and all patients had normal creatinine for their age (0.3–1.0 mg/dL). Our initial three

attempts used the pencil beam respiratory navigator with the 3D IR bSSFP sequence; however, all of these proved to be unusable. This is likely due to artifact generated by the navigator restore pulse labeling blood as has been described previously [14]. This likely caused a compression of the dynamic range and thus the overall image quality was degraded (Fig. 5). We have also run 2D PSIR LGE sequences as described above, with both positive and negative results (Fig. 6). Image quality for LGE was excellent in these cases.



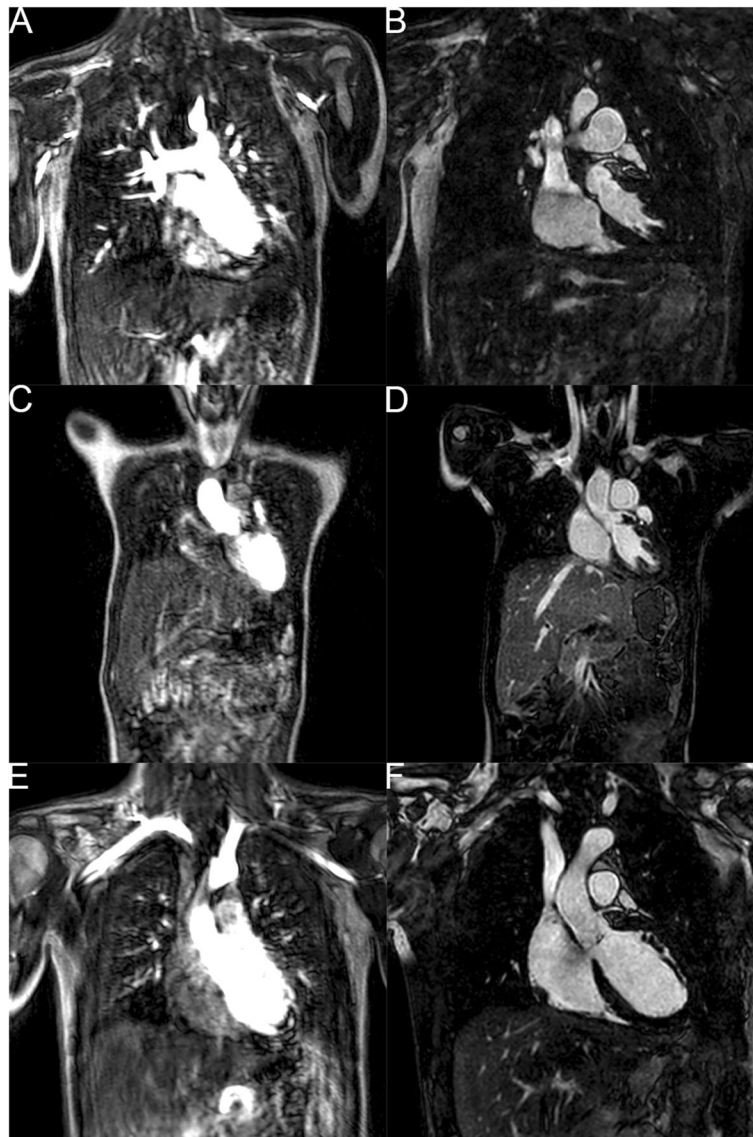


Fig. 4 Time-resolved MRA and 3D IR bSSFP iNAV example images. MRA and 3D IR bSSFP iNAV images, respectively, from (a, b) patient with pulmonary stenosis and sinus venosus atrial septal defect (ASD) status post surgical intervention; (c, d) patient with hypoplastic right pulmonary artery (RPA) with severe distal RPA stenosis, secundum ASD, coronary sinus septal defect; (e, f) patient with bicuspid aortic valve with dilated aortic root

Conclusion

Given the importance of time-resolved MRA, steady state 3D IR bSSFP, and LGE in fully evaluating patients with congenital heart disease, our protocol represents a step forward in being able to acquire all of these datasets in a single exam with a single contrast agent. The individual features of this protocol are not novel. The slow infusion, image navigator, bolus technique and late gadolinium enhancement techniques have been described [10–12]. The purpose of the protocol is to provide practical guidance on how to combine these techniques to enable acquisition of these datasets using existing

injector equipment at 1.5 Tesla magnet field strength. Our choice of inversion time was influenced by our previous clinical experience, and by previous work suggesting 280 ms for gadobutrol by Dabir et al. (2012) [10]. However, unlike that study, our contrast agent could not be completely injected as a slow infusion, because a bolus injection is required for first-pass MRA. This, in turn, results in a broader variation of contrast agent concentration in the blood and so benefits from a shorter inversion time. In addition, our goal was not to completely null the myocardium, as might be desired for coronary imaging, but to have some myocardial

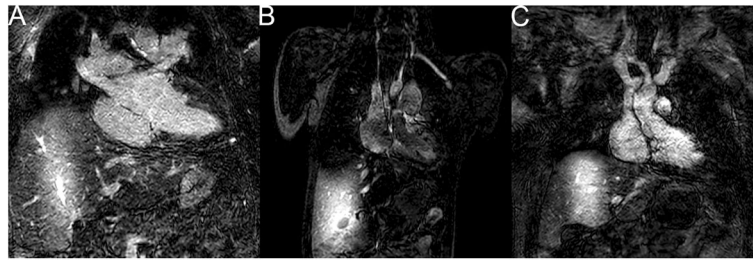


Fig. 5 Example images of 3D IR bSSFP imaging using pencil beam navigation. As can be seen in all three panels, these proved to be unusable because the navigator labeled the blood in the liver and thus the overall image quality was degraded. This is perhaps due to the high signal in the liver causing an overall compression of the dynamic range. **a** Image from a patient with d-transposition of the great arteries, ventricular septal defect (VSD), and pulmonary stenosis status post aortic root translocation and VSD closure. **b** Image from a patient with a large secundum atrial septal defect. **c** Image from a patient with trisomy 21 and common AV canal status post surgical repair

visualization to allow better identification of the anatomy in patients with congenital heart disease. We additionally confirmed our initial choice of 240 ms by running a Look-Locker immediately after the infusion. We used 220 ms for systole due to the practical need for a shorter inversion time at higher heart rates to allow systolic imaging. This protocol should be further evaluated in prospective studies to ensure that the image quality of all three image types are comparable to

current standards, and to further optimize imaging parameters such as inversion time, image acquisition length compared to infusion duration, and other factors, but our subjective experience is that it delivers comparable images to gadofosveset trisodium-based 3D IR bSSFP while allowing the added advantage of LGE imaging. One potential alternative for centers that do not have access to image-based navigation techniques may be to use pencil beam navigation with a higher flip angle and the navigator restore pulse turned off. However, given that this reduces the effectiveness of navigation on the Philips platform, we did not evaluate this option. In addition, pencil-beam navigation with 3D IR GRE sequences on Siemens uses a different implementation of pulse sequences that does not require the navigator restore pulse. We would surmise, therefore, that these scanners can continue to use the conventional pencil-beam navigator without incurring the labeling artifact described above. Our correspondence with pediatric centers employing Siemens hardware supports this assumption (T. Slesnick, personal communication). Given the current disruption in gadofosveset trisodium production, the importance of this alternative protocol will be evident to CMR practitioners who care for patients with congenital heart disease.

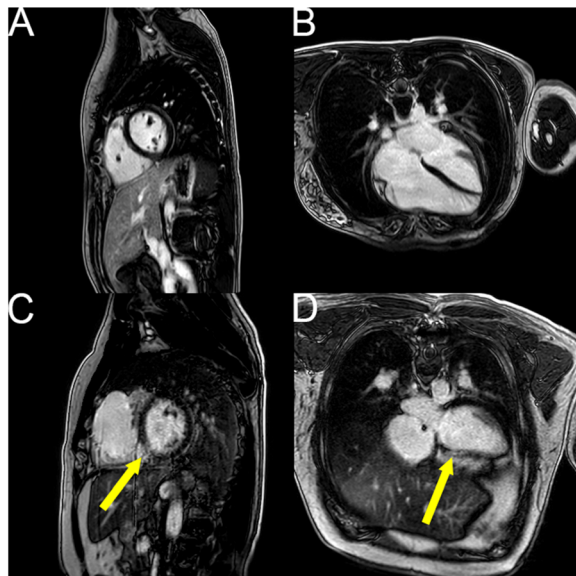


Fig. 6 Example phase sensitive inversion recovery late gadolinium enhancement images. **a, b** LGE negative short axis (**a**) and 4 chamber (**b**) images from previously mentioned patient with pulmonary stenosis and sinus venosus atrial septal defect (ASD) status post surgical intervention. **c, d** A small area of full-thickness LGE (yellow arrows) in the mid inferoseptal segment correlating to the RCA distribution is shown in short axis (**a**) and 4 chamber (**b**) images from a patient with d-transposition of the great arteries, ventricular septal defect (VSD), and pulmonary stenosis status post aortic root translocation and VSD closure, and known previous right coronary kinking status post reimplantation

Abbreviations

3D IR bSSFP: Three-dimensional inversion recovery balanced steady state free precession; ASD: Atrial septal defect; iNAV: Image navigation; IV: Intravenous; LGE: Late gadolinium enhancement; MRA: Magnetic resonance angiography; NSF: Nephrogenic systemic fibrosis; PSIR: Phase-sensitive inversion recovery; RPA: Right pulmonary artery

Acknowledgements

We would like to acknowledge the help of Dr. Tim Slesnick, Emory University/Children's Healthcare of Atlanta.

Funding

The authors acknowledge partial support from a British Heart Foundation (BHF) programme grant (RG/12/1/29262).

Availability of data and material

Data sharing not applicable to this article as no datasets were generated or analyzed during the current study.

Authors' contributions

AT, LJ, MH, RMB, AP, GFG, and TH contributed to the development of the protocol. AT, LJ, MH, RMB, AP, GFG, and TH reviewed the manuscript and agree with its publication. All authors read and approved the final manuscript.

Authors' information

Not applicable.

Competing interests

The authors declare that they have no competing interests.

Consent for publication

The UT Southwestern IRB approved the use of images and content from this study and waived the need for consent, STU 032016-009.

Ethics approval and consent to participate

The UT Southwestern IRB approved the use of images and content from this study and waived the need for consent, STU 032016-009.

Author details

¹Department of Pediatrics, University of Texas Southwestern Medical Center, 5323 Harry Hines Blvd, Dallas 75390, Texas, USA. ²Department of Radiology, University of Texas Southwestern Medical Center, 5323 Harry Hines Blvd, Dallas 75390, Texas, USA. ³Pediatric Cardiology, Children's Medical Center Dallas, 1935 Medical District Dr, Dallas 75235, Texas, USA. ⁴Department of Imaging and Biomedical Engineering, King's College London, London, UK. ⁵Pontificia Universidad Católica de Chile, Escuela de Ingeniería, Santiago, Chile.

Received: 2 August 2016 Accepted: 24 September 2016

Published online: 05 October 2016

References

- Fratz S, Chung T, Greil GF, Samyn MM, Taylor AM, Valsangiacomo Buechel ER, Yoo SJ, Powell AJ. Guidelines and protocols for cardiovascular magnetic resonance in children and adults with congenital heart disease: SCMR expert consensus group on congenital heart disease. *J Cardiovasc Magn Reson*. 2013;15:51.
- Makowski MR, Wiethoff AJ, Uribe S, Parish V, Botnar RM, Bell A, Kiesewetter C, Beerbaum P, Jansen CH, Razavi R, et al. Congenital heart disease: cardiovascular MR imaging by using an intravascular blood pool contrast agent. *Radiology*. 2011;260:680–8.
- Febbo JA, Galizia MS, Murphy IG, Popescu A, Bi X, Turin A, Collins J, Markl M, Edelman RR, Carr JC. Congenital heart disease in adults: Quantitative and qualitative evaluation of IR FLASH and IR SSFP MRA techniques using a blood pool contrast agent in the steady state and comparison to first pass MRA. *Eur J Radiol*. 2015;84:1921–9.
- Henningsson M, Hussain T, Vieira MS, Greil GF, Smink J, Ensbergen GV, Beck G, Botnar RM. Whole-heart coronary MR angiography using image-based navigation for the detection of coronary anomalies in adult patients with congenital heart disease. *J Magn Reson Imaging*. 2016;43:947–55.
- Camren GP, Wilson GJ, Bamra VR, Nguyen KQ, Hippe DS, Maki JH. A comparison between gadofosveset trisodium and gadobenate dimeglumine for steady state MRA of the thoracic vasculature. *Biomed Res Int*. 2014;2014:625614.
- Robert P, Violas X, Grand S, Lehericy S, Idee JM, Ballet S, Corot C. Linear gadolinium-based contrast agents are associated with brain gadolinium retention in healthy rats. *Invest Radiol*. 2016;51:73–82.
- Reiter T, Ritter O, Prince MR, Nordbeck P, Wanner C, Nagel E, Bauer WR. Minimizing risk of nephrogenic systemic fibrosis in cardiovascular magnetic resonance. *J Cardiovasc Magn Reson*. 2012;14:31.
- Gadavist package insert [http://www.accessdata.fda.gov/drugsatfda_docs/label/2016/201277s011lbl.pdf], Accessed 29 July 2016.
- Rudolph A, Messroghli D, von Knobelsdorff-Brenkenhoff F, Traber J, Schuler J, Wassmuth R, Schulz-Menger J. Prospective, randomized comparison of gadopentetate and gadobutrol to assess chronic myocardial infarction applying cardiovascular magnetic resonance. *BMC Med Imaging*. 2015;15:55.
- Dabir D, Naehle CP, Clauberg R, Gieseke J, Schild HH, Thomas D. High-resolution motion compensated MRA in patients with congenital heart disease using extracellular contrast agent at 3 Tesla. *J Cardiovasc Magn Reson*. 2012;14:75.
- Henningsson M, Koken P, Stehning C, Razavi R, Prieto C, Botnar RM. Whole-heart coronary MR angiography with 2D self-navigated image reconstruction. *Magn Reson Med*. 2012;67:437–45.
- Ishida M, Schuster A, Morton G, Chiribiri A, Hussain S, Paul M, Merkle N, Steen H, Lossnitzer D, Schnackenburg B, et al. Development of a universal dual-bolus injection scheme for the quantitative assessment of myocardial perfusion cardiovascular magnetic resonance. *J Cardiovasc Magn Reson*. 2011;13:28.
- Hussain T, Lossnitzer D, Bellsham-Revell H, Valverde I, Beerbaum P, Razavi R, Bell AJ, Schaeffter T, Botnar RM, Uribe SA, Greil GF. Three-dimensional dual-phase whole-heart MR imaging: clinical implications for congenital heart disease. *Radiology*. 2012;263:547–54.
- Moghari MH, Peters DC, Smink J, Goepfert L, Kissinger KV, Goddu B, Hauser TH, Josephson ME, Manning WJ, Nezafat R. Pulmonary vein inflow artifact reduction for free-breathing left atrium late gadolinium enhancement. *Magn Reson Med*. 2011;66:180–6.

Submit your next manuscript to BioMed Central and we will help you at every step:

- We accept pre-submission inquiries
- Our selector tool helps you to find the most relevant journal
- We provide round the clock customer support
- Convenient online submission
- Thorough peer review
- Inclusion in PubMed and all major indexing services
- Maximum visibility for your research

Submit your manuscript at
www.biomedcentral.com/submit

