



King's Research Portal

DOI:

[10.1186/s40478-017-0476-y](https://doi.org/10.1186/s40478-017-0476-y)

Document Version

Publisher's PDF, also known as Version of record

[Link to publication record in King's Research Portal](#)

Citation for published version (APA):

Parviainen, L., Dihanich, S., Anderson, G., Wong, A. M., Brooks, H. R., Abeti, R., Rezaie-Osquoie, P., Lalli, G., Pope, S., Heales, S. J., Mitchison, H. M., Williams, B. P., & Cooper, J. D. (2017). Glial cells are functionally impaired in juvenile neuronal ceroid lipofuscinosis and detrimental to neurons. *Acta Neuropathologica Communications*, 5(1)(74). Advance online publication. <https://doi.org/10.1186/s40478-017-0476-y>

Citing this paper

Please note that where the full-text provided on King's Research Portal is the Author Accepted Manuscript or Post-Print version this may differ from the final Published version. If citing, it is advised that you check and use the publisher's definitive version for pagination, volume/issue, and date of publication details. And where the final published version is provided on the Research Portal, if citing you are again advised to check the publisher's website for any subsequent corrections.

General rights

Copyright and moral rights for the publications made accessible in the Research Portal are retained by the authors and/or other copyright owners and it is a condition of accessing publications that users recognize and abide by the legal requirements associated with these rights.

- Users may download and print one copy of any publication from the Research Portal for the purpose of private study or research.
- You may not further distribute the material or use it for any profit-making activity or commercial gain
- You may freely distribute the URL identifying the publication in the Research Portal

Take down policy


If you believe that this document breaches copyright please contact librarypure@kcl.ac.uk providing details, and we will remove access to the work immediately and investigate your claim.

RESEARCH

Open Access



Glial cells are functionally impaired in juvenile neuronal ceroid lipofuscinosis and detrimental to neurons

Lotta Parviainen^{1†}, Sybille Dihanich^{1†}, Greg W. Anderson¹, Andrew M. Wong¹, Helen R. Brooks¹, Rosella Abeti², Payam Rezaie³, Giovanna Lalli⁴, Simon Pope⁵, Simon J. Heales⁵, Hannah M. Mitchison⁵, Brenda P. Williams^{1†} and Jonathan D. Cooper^{1,6*†} 

Abstract

The neuronal ceroid lipofuscinoses (NCLs or Batten disease) are a group of inherited, fatal neurodegenerative disorders of childhood. In these disorders, glial (microglial and astrocyte) activation typically occurs early in disease progression and predicts where neuron loss subsequently occurs. We have found that in the most common juvenile form of NCL (CLN3 disease or JNCL) this glial response is less pronounced in both mouse models and human autopsy material, with the morphological transformation of both astrocytes and microglia severely attenuated or delayed. To investigate their properties, we isolated glia and neurons from *Cln3*-deficient mice and studied their basic biology in culture. Upon stimulation, both *Cln3*-deficient astrocytes and microglia also showed an attenuated ability to transform morphologically, and an altered protein secretion profile. These defects were more pronounced in astrocytes, including the reduced secretion of a range of neuroprotective factors, mitogens, chemokines and cytokines, in addition to impaired calcium signalling and glutamate clearance. *Cln3*-deficient neurons also displayed an abnormal organization of their neurites. Most importantly, using a co-culture system, *Cln3*-deficient astrocytes and microglia had a negative impact on the survival and morphology of both *Cln3*-deficient and wildtype neurons, but these effects were largely reversed by growing mutant neurons with healthy glia. These data provide evidence that CLN3 disease astrocytes are functionally compromised. Together with microglia, they may play an active role in neuron loss in this disorder and can be considered as potential targets for therapeutic interventions.

Keywords: Juvenile batten disease, CLN3 disease, Neuronal ceroid lipofuscinosis, Neuron-glia interactions, Astrocyte and microglial dysfunction

Introduction

The neuronal ceroid lipofuscinoses (NCLs) or Batten disease are a group of fatal lysosomal storage disorders, and are collectively the most common cause of childhood dementia [91]. Each form of NCL is caused by mutations in a different gene, which determines the age of disease onset, symptoms and rate of disease progression, but all

are fatal after a period of prolonged disability [79, 96]. Very little is known about how mutations in these genes lead to devastating effects upon the brain, but these diseases share common pathological features, including accumulation of autofluorescent storage material within the lysosome and profound neuronal loss [2, 25, 63].

Clues to understanding NCL pathogenesis have come from studying mouse models [13, 23, 24, 82]. Although neuron loss is widespread at the end stages of disease, there is remarkable selectivity in its earlier stages with these effects being most prominent within the thalamocortical system and the cerebellum, as reviewed in [24, 25, 63]. However, no direct relationship has been found between this pattern of neuron loss and storage material accumulation [24, 25, 63]. Instead, localized glial activation

* Correspondence: jonathan.cooper@labiomed.org

†Equal contributors

¹Department of Basic and Clinical Neuroscience, King's College London, Institute of Psychiatry, Psychology & Neuroscience, Maurice Wohl Clinical Neuroscience Institute, 5 Cutcombe Road, London SE5 9RX, UK

⁶Department of Pediatrics, Harbor-UCLA Medical Center, Los Angeles Biomedical Research Institute and David Geffen School of Medicine UCLA, 1124 West Carson Street, Hanley Hardison Building, Torrance, CA 90502, USA Full list of author information is available at the end of the article

consistently occurs early in NCL disease progression, and its distribution accurately predicts where neuron loss subsequently occurs, as reviewed in [25, 63]. There is also evidence from human autopsy material that neuron loss is greatest where astrogliosis and microglial activation is most pronounced [2, 37, 90].

In the most common juvenile form of NCL (JNCL or CLN3 disease) the activation of both astrocytes and microglia appears to be attenuated compared to other earlier onset forms of NCL [68, 69, 90]. We have explored this issue in more detail in this study, as such observations raise the possibility that normal glial function may be compromised by *CLN3* deficiency. Since both astrocytes [66, 85] and microglia [5] are crucial for proper neuron function and survival, as well as playing a pivotal role in the pathogenesis of CNS diseases, any deficits in the biology of these cells could significantly impact upon neuronal health. Indeed, recent evidence suggests that this could be the case in CLN3 disease, with a potential influence of both microglia and astrocytes [16, 99]. There is also evidence in CNS disease and injury that astrocytes may be primed by microglia to directly harm neurons [49], raising the possibility that glia may actively contribute to the pathogenesis of a range of disorders. Furthermore, astrocyte dysfunction is suggested to trigger neurodegeneration specifically in lysosomal storage disorders, for example in multiple sulfatase deficiency [28], and in Niemann-Pick disease type C [21].

In this study, we have explored the role of glia in CLN3 disease using primary cultures of microglia, astrocytes and neurons derived from *Cln3*-deficient mice. Grown in isolation, both types of glia responded atypically to stimulation and displayed altered protein secretion profiles. These differences were more profound in astrocytes, which displayed a disrupted actin and intermediate filament cytoskeleton and an impaired ability to propagate a calcium signal and clear glutamate, suggesting that neuron-glia communication may be impaired in the JNCL brain. Cortical neurons from these mice displayed altered neurite branching, suggesting neurons are also compromised by *Cln3* deficiency. In a mixed glial-neuron co-culture system, we found that *Cln3*-deficient glial cells had a significant negative impact upon the survival and morphology of both *Cln3*-deficient and wild type neurons, but that the defects found in mutant neurons could be markedly improved by the presence of healthy astrocytes and microglia.

These findings provide further new information on how both glia and neurons are compromised in this disorder and the negative role that glial cells appear to play in the pathogenesis of CLN3 disease, and also highlight astrocytes and microglia as novel potential targets for future therapeutic approaches.

Materials and methods

Animals

Homozygous *Cln3^{Δex1-6}* mice (*Cln3^{-/-}*) were used as a model of CLN3 disease [56] and cells isolated from early postnatal mice for tissue culture, as described below, and were also assessed histologically. For histological comparisons of the level of glial activation, homozygous *Tpp1*-deficient mice (*Tpp1^{-/-}*) were used as a model of CLN2 disease (Late Infantile NCL) [84]. Wild type (WT) mice on the same strain (C57BL/6 J) background were used as controls. All animal housekeeping and procedures were carried out according to the UK Scientific Procedures (Animals) Act (1986). *Cln3^{-/-}* mice were analyzed histologically at 6.5 months (early symptomatic), 12 months (disease mid stage), and 22 months of age (severely affected), and *Tpp1^{-/-}* mice histologically at 4 months of age (severely affected).

Human tissues

Human specimens were obtained from the Human Brain and Spinal Fluid Resource Centre, Los Angeles and the MRC London Neurodegenerative Diseases Brain Bank, Institute of Psychiatry, King's College London following routine autopsies of NCL patients with informed written consent from their families. At autopsy, tissues were fixed immediately by immersion in 4% neutral buffered formaldehyde and subsequently processed and embedded in paraffin wax. These cases included NCL patients with CLN2 ($n = 2$; 6 years old Female, 26 years Male), CLN3 ($n = 2$; 20 years old Male, 24 years old Female), neurologically normal controls ($n = 2$ ages 25 years Male, 26 years Female). Study protocols for the use of human material were approved by the Ethical Research Committees of the Institute of Psychiatry (approval numbers 223/00, 181/02).

Histological analysis

To investigate glial activation in the mouse brain, frozen sections from *Cln3^{-/-}*, *Tpp1^{-/-}* and WT mice were prepared as previously described [8, 40, 68, 69]. To investigate glial activation in the human NCL brain, paraffin-embedded tissue blocks were prepared from the primary visual cortical region of human CLN2 and CLN3 autopsy tissue ($n = 2$ for each type of NCL), and cut into 8 μm sections, as previously described [18, 90]. Both mouse and human sections containing the primary visual cortex were immunostained with antibodies to glial fibrillary acidic protein (GFAP, 1:1000 for mouse tissue, 1:5000 for human tissue, rabbit polyclonal, Dako) to identify activated astrocytes and Cluster of Differentiation 68 (CD68, 1:150, Rat monoclonal, Serotec) to identify activated microglia [54, 59, 71]. Immunostaining was detected using VECTASTAIN Elite ABC Reagent (Vector Laboratories)

and DAB substrate (Sigma) and human sections counterstained with hematoxylin [18, 90].

Tissue culture

Glial cultures

Mixed glial cells were isolated from *post-natal* day 1–4 (P1–P4) *Cln3*^{-/-} or WT mouse cerebral cortices, as previously described [52, 97]. Once these cultures reached confluence they were composed of a base layer of non-dividing astrocytes and an upper layer of dividing microglia and a few oligodendrocytes. Microglial cultures were isolated from these P2–P4 mixed glial cultures by shaking at 180 rpm for 10–12 h at 37°C in a humidified incubator 5% CO₂ [97]. Cells were harvested, re-suspended in RPMI 1640 (Gibco, Invitrogen) supplemented with penicillin/streptomycin (100 U/mL, 100 mg/mL, Sigma, UK), 5% FBS (Gibco, Invitrogen) and 2 mM L-Glutamine (Sigma), plus macrophage colony-stimulating factor (M-CSF, 10 ng/ml) and granulocyte macrophage colony-stimulating factor (GM-CSF, 10 ng/ml) (both R&D Systems, Minneapolis, MN) to promote proliferation [35, 87], then plated at a concentration of 1–2 × 10⁵ cells per flask on poly-D-lysine (PDL, 25 µg/ml, Sigma) coated T25 (Corning, Costar) flasks. To generate astrocyte cultures (from P1–P2 mice), microglia were removed, as described above, and these confluent astrocyte monolayers were treated with Ara-C (Arabinofuranosyl Cytidine, 2 × 10⁻⁵ mol/l) for 7 days to abolish any remaining dividing cells. As such, at the start of all experiments described, these glial cells had been cultured for approximately 21 days (astrocytes) or 12–14 days (microglia). All cultures used in these studies exhibited a purity of >98% (astrocytes) or >99% (microglia) at one week after plating, as determined by immunofluorescence staining, but their composition may subsequently vary over time under some culture conditions.

Neuronal cultures

Cells were isolated from P0 WT or *Cln3*^{-/-} mouse cerebral cortices as described previously [10, 11] and plated on PDL coated (50 µg/ml), 13 mm glass coverslips (VWR) in 24 well plates (Corning, Costar) at a concentration of 2.5–3 × 10⁵ cells per coverslip.

Neuron-glia co-cultures

Co-cultures were generated by plating 50,000 mixed WT or *Cln3*^{-/-} glial cells from 3 to 4 week old cultures directly on top of 7 day old neuronal cultures.

Pharmacological activation of glial cells

Microglial cells were activated by exposure to lipopolysaccharide (LPS, 1 µg/ml LPS, Sigma), while astrocytes were activated by exposure to LPS plus interferon-gamma (IFN-γ, 100 U/ml, Thermo Scientific) [12, 14]. The ability of mutant and WT glia to respond similarly to LPS and

IFN-γ was assessed by studying the nuclear translocation of the downstream phosphorylated proteins, NF-κβ subunit P65 (P-P65) [22] or STAT1 (P-STAT1) [39] respectively, using phospho-specific primary antibodies (P-P65, 1:100; P-STAT1, 1:50, both from Cell Signaling).

Immunofluorescence staining

Cultures were immunostained using standard protocols (see [9]). Where appropriate, nuclei were counterstained with DAPI (4'-6-Diamidino-2-phenylindole, 0.5–1 µg/ml, Sigma) and coverslips mounted using either Fluoromount G or Prolong gold (Southern Biotech). The composition of all cultures was assessed using cell-type specific markers. GFAP (rabbit polyclonal, 1:500, Dako) or glutamate synthetase (rabbit polyclonal, 1:500, Abcam) was used to identify astrocytes, O4 (monoclonal antibody, 1:100, Covance) to identify oligodendrocytes, CD68 (Rat monoclonal, 1:500, Serotec) to identify microglia and MAP2 (monoclonal antibody, 1:1000, Abcam) and/or NeuN (monoclonal antibody, 1:100, Chemicon) to identify neurons. For cytoskeletal analysis, phalloidin was used to visualize F-actin filaments and α- and β- tubulin antibodies to visualize microtubular organization (monoclonal and polyclonal antibodies respectively, both from Sigma and used at 1:1000). All secondary antibodies were obtained from Invitrogen, and used at a dilution of 1:1000 (Alexa 488, 546, 633 and biotinylated antibodies) or 1:5000 (Alexa 790, 680). Immunofluorescently stained cells were visualized using a Zeiss AxioImager Z1 fluorescence microscope (Carl Zeiss, Ltd) with a monochrome AxioCamMR3 camera using *AxioVision* 4.8. Imaging software (Carl Zeiss, Welwyn Garden City).

Cell death assays

The overall cytotoxicity in co-cultures was evaluated by measuring lactate dehydrogenase (LDH) release using a Cytotox 96 assay kit (Promega) according to manufacturer's instructions. Total LDH content (100% LDH) was determined by lysing cultures in 0.1% Triton X-100 for 30 min, and LDH release from cells was expressed as a percentage of total LDH (%LDH) in each sample. To reveal the identity of the cells undergoing cell death, a live/dead fixable cellular marker conjugated to a red fluorochrome (Invitrogen) was used, according to the manufacturer's instructions, in association with relevant cell-type specific markers.

Assessment of morphological changes following activation

Astrocyte cultures were immunostained with GFAP and images of 10 random fields of cells, whose processes were not overlapping, were taken and cell soma size measured using *ImageJ* (National Institutes of Health, Bethesda, MD). The average cell soma size of *Cln3*^{-/-} astrocytes was normalized to the corresponding values

from WT astrocytes. To assess the morphological response of microglia to activation, cells were classified into 3 subcategories [98]: type 1 cells – microglia with extended processes (non-activated); type 2 cells – microglia with retracted processes (partly activated); type 3 cells – rounded cells with a small soma (fully activated), and the percentage of each morphological type present (determined from counting 10 random fields per culture) was calculated for each culture condition.

Protein secretion analysis

The quantitative analysis of the levels of proteins secreted by *Cln3*^{-/-} and WT glial cells grown under basal conditions and at various time points (between 6 h and 96 h) after activation with LPS/IFN γ was carried out by Myriad RBM (Austin, TX, USA, *RodentMAP version 2.0* cytokine analysis). Simultaneous analysis of 59 different proteins was carried out on three different biological samples for each treatment per genotype using an automated quantification system. The values obtained were normalized to the relative number of cells in the culture from which the medium was collected, as determined by counting DAPI stained nuclei.

Glutathione measurements

The intracellular levels of reduced (GSH) and oxidized (GSSG) glutathione was determined in WT and *Cln3*^{-/-} astrocytes. Samples for these measurements were generated from stimulated (for 24 or 48 h) and non-stimulated cultures by trypsinization and resuspension of cells in 300 μ l of isolation medium (320 mM sucrose, 10 mM Tris, 1 mM EDTA, pH 7.4), and the sample split into two for testing. One half was used to quantify GSH levels by separating this antioxidant from other components within the sample using reverse-phase high performance liquid chromatography (HPLC) followed by detection using an electrochemical method [33]. The GSH levels obtained were normalized to the total amount of protein, as determined using a Lowry protein assay (Thermo Scientific). The other half of the sample was used to determine the presence of GSSG. This was carried out by treating samples with glutathione reductase (GR) in the presence of reduced nicotinamide adenosine dinucleotide phosphatase (NADPH) to convert GSSG to GSH [86], and the level determined by HPLC as before. This gives a measure of the total glutathione within the cell. The difference between total glutathione concentration and GSH concentration was then used to calculate the concentration of GSSG. Finally, glutathione levels in the culture medium were measured using the GSH-Glo glutathione assay kit (Promega), according to manufacturer's instructions. In some experiments, the effect of actin depolymerisation on glutathione secretion was

assessed by treating WT astrocytes with Cytochalasin D (1 μ M), an inhibitor of actin polymerization.

Intracellular calcium measurements

Fluctuations in the levels of intracellular Ca^{2+} ($[\text{Ca}^{2+}]_i$) were examined to determine the ability of WT and *Cln3*^{-/-} astrocytes to generate calcium waves when exposed to ATP (100 μ M) as described previously [60]. To measure intracellular Ca^{2+} levels, cells were loaded with 5 μ M of Fura-2-acetoxymethyl ester (Fura-2 AM, Invitrogen), which is a membrane permeable derivative of the ratiometric calcium indicator Fura-2, for 30 min at room temperature and excess reagent removed by washing. Fluorescence measurements were carried out at room temperature using an epifluorescence inverted microscope equipped with a 20X fluorite objective over a 30–45 min period. $[\text{Ca}^{2+}]_i$ was monitored in single cells, with the excitation light provided by a Xenon arc lamp, using a monochromator (Cairn Research) to excite fluorescence sequentially at 340, 380 nm (all at 10 nm bandwidth). Using a long pass filter from 510 nm, the emitted fluorescence light was reflected and then transferred to a frame transfer cooled CCD camera (Hamamatsu Orca ER).

Glutamate uptake assay

The glutamate clearance capacity of WT and *Cln3*^{-/-} astrocytes was determined using a Glutamate Assay kit (Abcam), according to manufacturer's instructions. Values were normalized to the amount of total protein in each sample, determined using a BCA protein assay kit (Thermo Scientific).

Cell mobility assay

The ability of *Cln3*^{-/-} astrocytes to migrate was assessed by performing a scratch wound assay. A scratch was made in confluent astrocyte cultures grown on Essen Image Lock 24-well plates using an Essen Wound-maker, generating an 800–900 μ m wide cell-free region. Cultures were then placed in the *IncuCyte* live cell imaging system (Essen) and the wound width measured every hour for 24 h [62]. The rate of migration was obtained by measuring the width of the existing wound over time.

Neurite complexity measurements

Neurite complexity was analyzed in P0 cortical neuron cultures from WT and *Cln3*^{-/-} mice after 7 DIV using *ImageJ* software to analyze immunofluorescence images of MAP2-positive cortical neurons, measuring 40 cells per genotype per experiment. The number of primary, secondary, and tertiary neurites present on each neuron was counted, the area of its cell soma measured, together and the total length of all primary neurites and the length of the longest primary neurite (assumed to

represent the axon). Similar measurements of neurite complexity and soma size were also obtained from neurons co-cultured with glial cells.

Statistics

All quantitative data was collected using Microsoft *Excel* spreadsheets, and analyzed using *Graphpad PRISM*. Where appropriate the data were normalized to values from untreated WT cultures. Most frequently, to allow comparisons of groups, one-way ANOVA with Bonferroni correction was used to test for statistical significance. However, when two groups were compared with each other a Student's T-test was used. In general, three technical replicates were used, and independent experiments were repeated at least three times (unless otherwise stated). Data was presented as mean \pm SEM and changes were considered significant with a *p*-value of ≤ 0.05 . *P*-values ≤ 0.05 marked with *, *P*-values ≤ 0.01 marked with **, *P*-value ≤ 0.001 marked with ***.

Results

Attenuated glial response in human CLN3 disease

In moderately affected *Cln3*^{-/-} mice the reactive response of glia, judged by hallmark morphological changes, appears attenuated compared to earlier onset forms of NCL [68, 69]. To investigate this possibility further we extended our analysis to more aged and severely affected *Cln3*^{-/-} mice, and also investigated the extent of glial activation in the same cortical region in human CLN3 disease autopsy tissue.

We compared the extent of gliosis in the primary visual cortex (V1) of *Cln3*^{-/-} mice, (from 6.5–21 months of age) with that of wildtype controls and *Tpp1*^{-/-} mice (at 4 months of age, representing disease end stage), a model for CLN2 disease [84], an earlier onset and more rapidly progressing type of NCL [4]. In V1 of these severely affected *Tpp1*^{-/-} mice, the morphological features characteristic of reactive astrocytosis were evident within these astrocytes, with intense GFAP immunoreactivity, thickened processes and pronounced hypertrophy (Fig. 1a). This astrocytosis in *Tpp1*^{-/-} mice displayed laminar specificity, being most pronounced in laminae II and III, V and VI.

In comparison, in V1 of *Cln3*^{-/-} mice, GFAP immunoreactivity revealed a markedly different extent of astrocytosis, with substantial differences in astrocyte morphology. Apart from a small population of darkly immunostained astrocytes present in the most ventral portion of lamina VI, the majority of astrocytes in V1 of presymptomatic 6.5 month old *Cln3*^{-/-} mice displayed a protoplasmic morphology with numerous thin processes, compared to the characteristic appearance of fully activated astrocytes in *Tpp1*^{-/-} mice (Fig. 1a). Initially largely confined to laminae I and IV, these protoplasmic astrocytes became

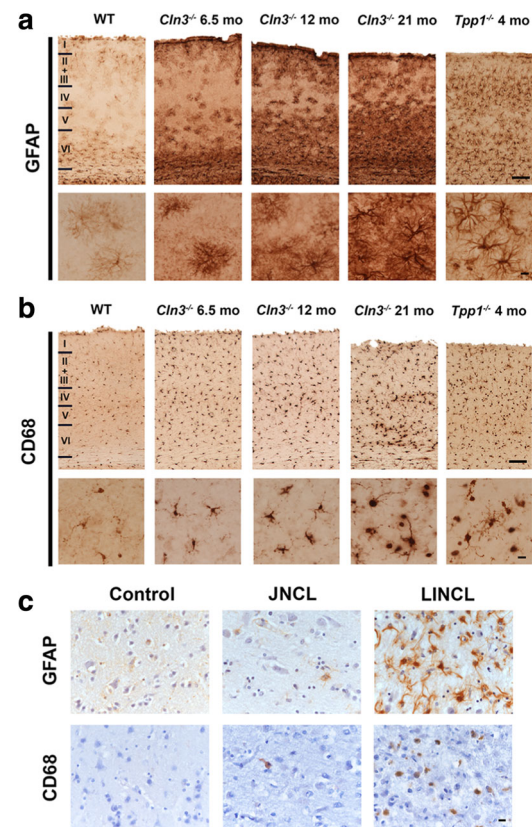


Fig. 1 Attenuated glial responses in *Cln3*^{-/-} mouse tissue and in human JNCL. Cortical sections from wild type (WT), *Cln3*^{-/-} and *Tpp1*^{-/-} mice (**a**, **b**) or from LINCL and JNCL human cases (**c**) were immunostained with Glial Fibrillary Acid Protein (GFAP) or Cluster of Differentiation 68 (CD68) to investigate the level of reactive astrocytosis or microglial activation, respectively. Compared to the very low level of glial activation present in WT mice (shown at 6.5 months of age, but changes very little over time), marked astrocytosis (**a**) and microglial activation (**b**) was apparent in severely affected 4-month-old *Tpp1*^{-/-} mouse sections, with hypertrophied astrocytes with intense GFAP immunostaining and thickened processes, and morphologically transformed microglia with intense CD68 immunostaining being observed. **a** In contrast, astrocytosis appeared different in nature in the *Cln3*^{-/-} cortex, and although many astrocytes displayed intense GFAP immunoreactivity, especially in the deeper laminae, most these astrocytes still retained many thin processes reminiscent of protoplasmic astrocytes. Even at the end stages of the disease (21-month-old *Cln3*^{-/-} mice) very few astrocytes became fully hypertrophied. **b** A similar attenuated morphological transformation of microglial cells was also apparent in the cortex of *Cln3*^{-/-} mice. Although microglia became more intensely CD68 immunoreactive and more swollen with increased age, many of these cells retaining long branched processes, even in 21-month-old *Cln3*^{-/-} mice. **(c)** Reactive astrocytosis was observed in both human INCL and JNCL (**c**), but to very different extents. In LINCL cases astrocytes were intensely immunostained, with hypertrophied cell bodies and numerous thickened processes. In JNCL cases GFAP immunostaining was paler and far fewer, less hypertrophied astrocytes with thinner processes were evident. Only a few CD68 positive microglia were observed in JNCL cases (**c**), compared to the relative abundance of activated CD68 immunoreactive microglia activation present in the cortex of LINCL cases. Scale bars = 120 μ m (**a**, **b**) 20 μ m in higher magnification views; 50 μ m (**c**). Roman numerals in **a**, **b** indicate cortical laminae boundaries

more widespread within V1 of *Cln3*^{-/-} mice with disease progression, being present in lamina II and most of laminae V and VI at 12 months of age, and additionally in lamina IV by 21 months of age. Although the intensity of GFAP immunoreactivity progressively increased with time, only a small proportion of these astrocytes (mostly within lamina VI) displayed thickened processes or an enlarged cell soma, with most retaining a protoplasmic appearance with thin processes, even in severely affected 21 month old *Cln3*^{-/-} mice. These data suggest that at least a subset of *Cln3*^{-/-} astrocytes do retain the ability to transform morphologically, but only in a protracted manner towards disease end-stage.

A similarly attenuated activation of microglia was also evident in the cortex of *Cln3*^{-/-} mice (Fig. 1b). Although CD68 immunoreactive microglia were clearly more darkly immunostained in V1 of *Cln3*^{-/-} mice than in WT controls at all ages examined, these microglia retained a relatively small cell soma and numerous long thin processes. Only in severely affected *Cln3*^{-/-} mice by 21 months, were more overtly swollen and activated microglia were seen, and these were largely restricted to the more ventral portion of lamina VI and V. Even then, many of these swollen CD68 positive cells retained long thickened processes. This is in marked contrast to the V1 of 4-month-old *Tpp1*^{-/-} mice that were at disease end-stage, where numerous intensely immunostained, completely rounded, and fully activated amoeboid microglia were evident.

Taken together, these data suggest that loss of *Cln3* impairs the morphological transformation of both astrocytes and microglia, which is limited and only occurs late in the disease, in more severely affected *Cln3*^{-/-} mice. Having described a relatively limited glial response in the hippocampus of human CLN3 disease cases [90], we next investigated whether a similar phenotype was also evident in the primary visual cortex of CLN3 disease patient brain autopsy material (Fig. 1c). Numerous intensely immunostained GFAP positive hypertrophied astrocytes with many thickened processes were observed in V1 of CLN2 cases. In contrast, only a few weakly immunostained GFAP expressing astrocytes with thin processes were present in this region of CLN3 disease cases (Fig. 1c, top row). Similarly, dramatically fewer CD68 positive microglia were observed in V1 of CLN3 disease cases compared with CLN2 disease cases (Fig. 1c, bottom row).

These morphological observations suggest that the basic biology of glia, the neuronal support cells, may be impaired in CLN3 disease. To begin investigating how loss of CLN3 expression could influence glial cell function, we compared the properties of *Cln3*^{-/-} and WT glial cells using primary cultures of either astrocytes or microglia, having first defined the composition of our astrocyte (Additional file 1: Figure S1 and Additional file 2: Figure S2) and microglial monocultures

(Additional file 3: Figure S3). One week after plating microglial cultures showed over 99% of DAPI stained cells expressed CD68 (99.97 ± 0.02% and 99.97 ± 0.02% CD68 + ve in WT and *Cln3*^{-/-}, respectively; with only 0.03 ± 0.02% and 0.03 ± 0.03% being GFAP + ve). One week after plating over 98% of DAPI positive cells in our astrocyte cultures were positive for GFAP (WT: 98.80 ± 0.28% GFAP + ve, 1.90 ± 0.17% CD68 + ve, and 0.10 ± 0.10% O4 + ve; *Cln3*^{-/-}: 98.86 ± 0.10% GFAP + ve, 1.05 ± 0.13% CD68 + ve, and 0.10 ± 0.03% O4 + ve). With subsequent time in culture an increased fraction of DAPI stained, but GFAP negative cells were apparent in our astrocyte cultures, especially those from WT mice (e.g. see Fig. 3A.). However, at these later time points virtually all these DAPI labelled cells immunostained positively for a second astrocyte marker glutamine synthetase (see Additional file 2: Figure S2 for an example taken 48 h later), suggesting a dynamic down-regulation of GFAP over time under some culture conditions. Nevertheless, a minor contamination of our astrocyte cultures with ependymal or endothelial cells cannot be excluded.

Morphological responses of *Cln3*^{-/-} glia to activation are attenuated

To determine whether the attenuated morphological response of *Cln3*^{-/-} glia observed in vivo was mimicked in vitro, we stimulated monocultures of either microglia and astrocytes and assessed their ability to undergo morphological changes. To do this we exposed cultures to standard inflammatory stimuli that up-regulate pathways associated with immune and injury-related functions [38], either the bacterial endotoxin lipopolysaccharide (LPS) alone to activate microglia, or to LPS combined with interferon-γ (IFN), which synergizes with the effects of LPS, to activate astrocytes [26].

We first confirmed that *Cln3*^{-/-} glia were able to activate relevant downstream signaling pathways (phosphorylated NF-κβ subunit p65 and phosphorylated STAT-1, as downstream effectors of LPS and IFNγ stimulation respectively, [22, 94]) (Additional file 4: Figure S4). Next, to characterize the morphological transformation of microglia, WT and *Cln3*^{-/-} microglial cultures were immunostained with CD68 at various time-points after activation (2, 6, 12, 24, 48, 72 and 96 h), dividing these cells according to their morphology into Type 1 (non-activated), Type 2 cells (partly activated) and Type 3 cells (fully activated) (see methods). Even under basal conditions, CD68 immunoreactivity appeared more intense in *Cln3*^{-/-} vs. WT microglial cultures, with more rounded cells present (Fig. 2A). Upon stimulation, microglia of both genotypes morphologically transformed, but many fewer *Cln3*^{-/-} microglia changed shape after 24 h (Fig. 2A). When these changes were quantified (see Fig. 2B),

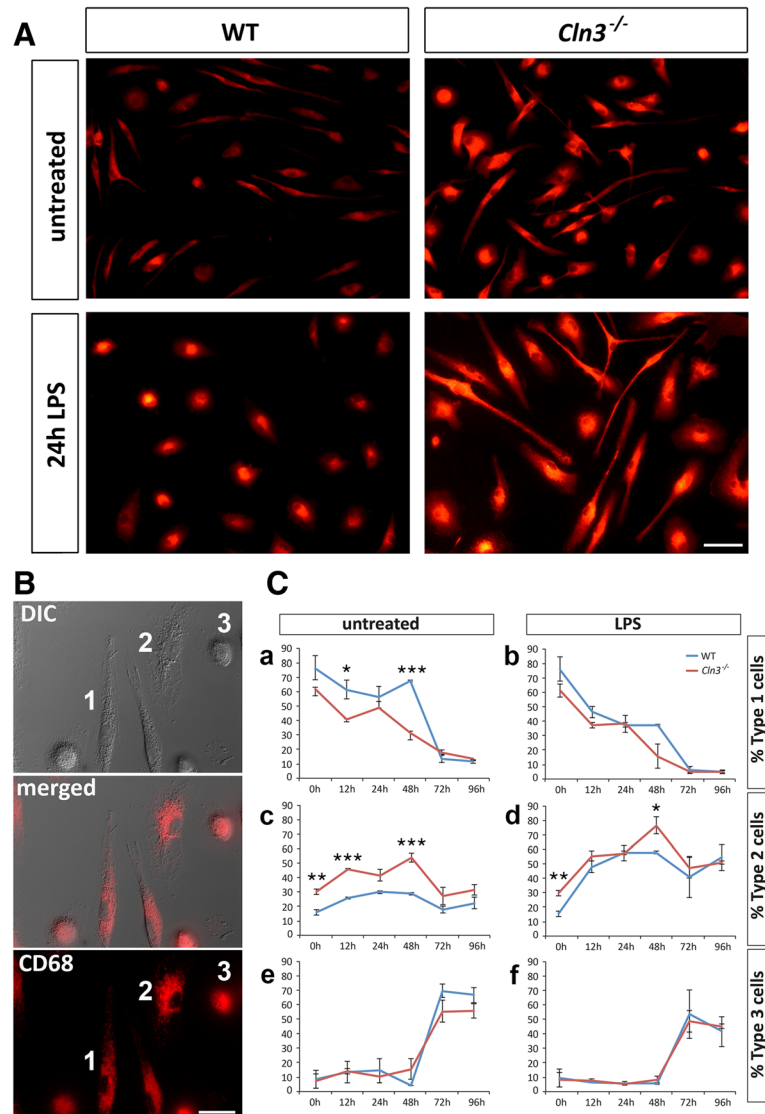


Fig. 2 Attenuated morphological transformation of *Cln3*^{-/-} microglia. The morphology of wild type (WT) and *Cln3*-deficient (*Cln3*^{-/-}) microglia studied under basal conditions and after stimulation with LPS was revealed by CD68 immunostaining (red). **A** Cultures of unstimulated WT microglia were mainly bipolar but upon LPS stimulation for 24 h these cells rapidly changed shape. In contrast, while cultures of *Cln3*^{-/-} microglia exhibited a heterogeneous morphology and had intense immunostaining for CD68 under basal conditions these cells failed to dramatically change shape upon stimulation for 24 h. **B** To quantify morphological changes over time, cells were divided into three categories: Type 1 cells (resting microglia); Type 2 cells (migrating/activated microglia); type 3 (amoeboid activated microglia). **C** The transformation of type 1 cells into type 2 cells initially occurred more slowly in *Cln3*^{-/-} microglial cultures upon stimulation, with type 3 cells first appearing in cultures of both genotypes around 48 h regardless of treatment. Scale bars = 50 μm (**A, B**)

there were more type 2 cells in *Cln3*^{-/-} vs. WT microglial cultures under basal conditions (Fig. 2C, compare panels a and b), suggesting a higher level of basal activation, but a slower morphological transformation of CLN3 disease microglia. A transformation of Type 1 cells into Type 2 cells occurred in microglial cultures of both genotypes upon stimulation, however, *Cln3*^{-/-} microglia responded more slowly than WT microglia, with a slower decline in the number of Type 1 cells (Fig. 2C, a, b) and a slower increase in the number of Type 2 cells (Fig. 2C, compare panels c and d). Until 48 h very little change was

observed in the percentage of Type 3 cells under any condition (Fig. 2C), but by 72 h there was a dramatic increase in the proportion of this fully activated cell type within both WT and *Cln3*^{-/-} microglial cultures under all conditions (Fig. 2c–f). This change was accompanied by a reduction in the percentage of both Type 1 and Type 2, suggesting a morphological transformation into Type 3 cells with increased time in culture.

The morphological response of astrocytes to stimulation (LPS/INFγ treatment for 24 h or 48 h) was assessed in GFAP immunostained cultures. Even under basal

conditions, untreated *Cln3*^{-/-} astrocytes had a strikingly different morphology to WT astrocytes, appearing larger and flatter, with disrupted intermediate filaments (Fig. 3). Upon stimulation, WT astrocytes already began to morphologically transform after 24 h; changing from broad, non-process bearing, flat cells into cells with a shrunken soma and multiple branched processes (as described in [53]) (Fig. 3A, c arrowheads). These changes become more apparent with time (Fig. 3A, e). In contrast, no significant morphological transformation of *Cln3*^{-/-} astrocytes could be detected until 48 h stimulation, when soma size began to decrease and some cells developed processes (Fig. 3A, f). To quantify these changes the soma size of WT and *Cln3*^{-/-} astrocytes were compared (Fig. 3B). After activation for 24 h or 48 h, the cell soma of WT astrocytes became smaller, and this was statistically significant after 24 h (30.5% ± 3.3 decrease). After 24 h of stimulation the soma size of *Cln3*^{-/-} astrocytes remained unchanged, but after 48 h of stimulation was not statistically different to that of stimulated WT astrocytes (Fig. 3C).

These data demonstrate that *Cln3*^{-/-} astrocytes and microglia are attenuated in their ability to change their morphology upon stimulation, suggesting that these cells retain at least some of their in vivo disease characteristics when cultured.

***Cln3*^{-/-} astrocytes, but not *Cln3*^{-/-} microglia, have a disrupted cytoskeleton**

Since morphological changes require cytoskeletal rearrangements, and GFAP immunostaining suggested that intermediate filament organization was perturbed in *Cln3*^{-/-} astrocytes (Fig. 3A), we also immunostained astrocytes for α- and β-tubulin to visualize microtubules and with phalloidin to visualize F-actin filaments and a similar cytoskeletal analysis was performed with microglia.

Both intermediate filaments and F-actin filaments appeared less defined and highly disorganized in *Cln3*^{-/-} vs. WT astrocytes (Fig. 4, a, b for GFAP, and c, d for F-actin, examples marked with arrowheads). Most *Cln3*^{-/-} astrocytes lacked F-actin filaments that spanned the cell body, a common morphological feature of cultured WT astrocytes (Fig. 4c, d). However, the α- and β-microtubular organization of WT and *Cln3*^{-/-} astrocytes appeared similar (Fig. 4, e, f and g, h, examples marked with arrows). These data reveal that enlarged *Cln3*^{-/-} astrocytes have an abnormally organized actin and intermediate filament cytoskeleton, whilst their microtubule organization appears normal. No overt changes were observed in the cytoskeletal organization of *Cln3*^{-/-} microglia (data not shown).

***Cln3*^{-/-} glia show altered protein secretion profiles**

The secretion of soluble factors is a key feature of both microglia and astrocytes under both physiological and

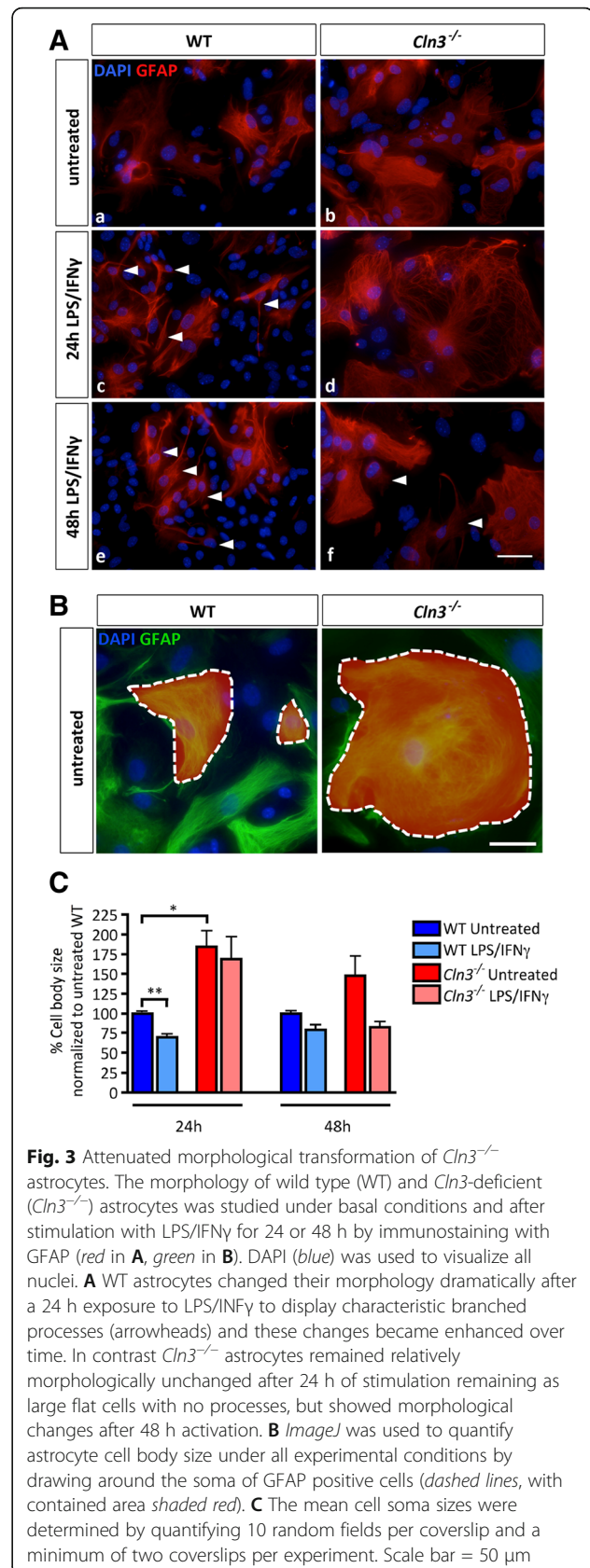
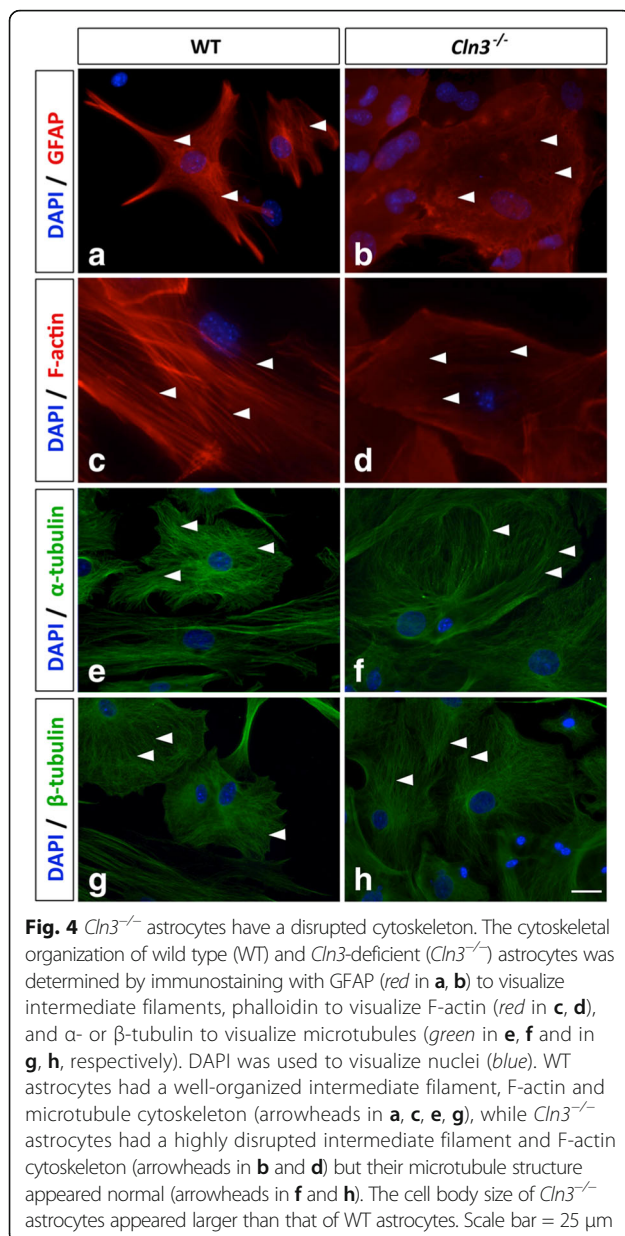


Fig. 3 Attenuated morphological transformation of *Cln3*^{-/-} astrocytes. The morphology of wild type (WT) and *Cln3*-deficient (*Cln3*^{-/-}) astrocytes was studied under basal conditions and after stimulation with LPS/IFN γ for 24 or 48 h by immunostaining with GFAP (red in **A**, green in **B**). DAPI (blue) was used to visualize all nuclei. **A** WT astrocytes changed their morphology dramatically after a 24 h exposure to LPS/IFN γ to display characteristic branched processes (arrowheads) and these changes became enhanced over time. In contrast *Cln3*^{-/-} astrocytes remained relatively morphologically unchanged after 24 h of stimulation remaining as large flat cells with no processes, but showed morphological changes after 48 h activation. **B** *ImageJ* was used to quantify astrocyte cell body size under all experimental conditions by drawing around the soma of GFAP positive cells (dashed lines, with contained area shaded red). **C** The mean cell soma sizes were determined by quantifying 10 random fields per coverslip and a minimum of two coverslips per experiment. Scale bar = 50 μ m



pathological conditions [51], therefore we compared the secretion profiles of WT and *Cln3*^{-/-} glia under basal conditions and after stimulation.

Cln3^{-/-} and WT microglia did not display any differences in the levels of factors secreted under basal conditions (data not shown), but five proteins were secreted at significantly lower levels by *Cln3*^{-/-} microglia upon LPS stimulation (Fig. 5). These proteins included three chemokines (MIP-1- γ , MIP-2 and RANTES), a glycoprotein (vWF) and a matrix metalloproteinase (MMP-9). These data indicate that *Cln3*^{-/-} microglia retain their capacity to secrete the majority of soluble factors into their environment. Equally, we observed no difference in the

phagocytic properties of *Cln3*^{-/-} microglia grown under basal conditions or after stimulation (data not shown).

Under basal conditions there was no significant difference between WT and *Cln3*^{-/-} astrocytes in the secretion pattern of the majority of proteins analyzed (Additional file 5: Table S1). However, upon exposure to LPS/IFN- γ a broad range of secreted proteins were detected at significantly reduced levels in *Cln3*^{-/-} astrocyte supernatants (Additional file 5: Table S2). Indeed, out of the 59 screened factors none (at 6 h), 19 (at 24 h) and 42 (at 72 h) factors were secreted at significantly lower levels by *Cln3*^{-/-} astrocytes compared to WT astrocytes upon activation (Additional file 5: Table S1 and S2). These included the reduced secretion of several mitogens (M-CSF, IL-3, FGF2, GM-CSF, FGF-9, TPO and IL-5), chemokines (Eotaxin, MIP1 α , MCP-3, MCP-1, KC/GRO α , MIP-3 α , MIP-2, IP-10, RANTES, MDC, MCP-5, MIP-1 γ , GCP-2 and MIP-1 β), anti- and pro-inflammatory cytokines (IL-17 α , IL-6, IL-12p70, IL-1 α , TNF α , IL-1 β , IL-10, IL-2). Furthermore, these cells also showed an impaired ability to secrete a range of proteins shown to have neuroprotective properties: IL-6 [95], IL-3 [101], GM-CSF [55], IL-10 [7], LIF [57], MCP-1 and RANTES [15].

There were however exceptions to this pattern of altered protein secretion. Two chemokines, macrophage inflammatory protein-1 γ (MIP-1 γ) and granulocyte chemotactic protein 2 (GCP-2) were both secreted significantly less by *Cln3*^{-/-} astrocytes under basal conditions, while one protein, tissue factor (TF), was secreted more by *Cln3*^{-/-} astrocytes under basal conditions. In contrast fibrinogen and the mitogen CRP were secreted significantly more by *Cln3*^{-/-} astrocytes upon stimulation. Examples of astrocyte secretion profiles for specific proteins are shown in Fig. 6.

Altered glutathione handling by *Cln3*^{-/-} astrocytes

The altered secretion profile of *Cln3*^{-/-} astrocytes led us to consider that these cells may also fail in their antioxidant support of neurons, particularly in their ability to secrete glutathione (GSH), one of the brain's most important neuroprotective factors [31, 78].

To analyze the ability of astrocytes to make and secrete GSH, cultures were washed, lysed and the intracellular levels of the reduced (functional) form of GSH measured. Under basal conditions, no significant differences in GSH levels were detected between WT and *Cln3*^{-/-} cultures (Fig. 7a). However, following stimulation the intracellular levels of reduced GSH decreased significantly in WT cultures (56.3 \pm 12.0% reduction after 24 h exposure, 59.9 \pm 12.6% reduction after 48 h, Fig. 7a), but were markedly increased in *Cln3*^{-/-} cultures (63 \pm 33.6% increase after 24 h, 28.1 \pm 19.3% increase after 48 h, Fig. 7a). Thus, intracellular GSH levels in LPS/IFN γ treated WT astrocytes were significantly lower than in LPS/IFN γ treated

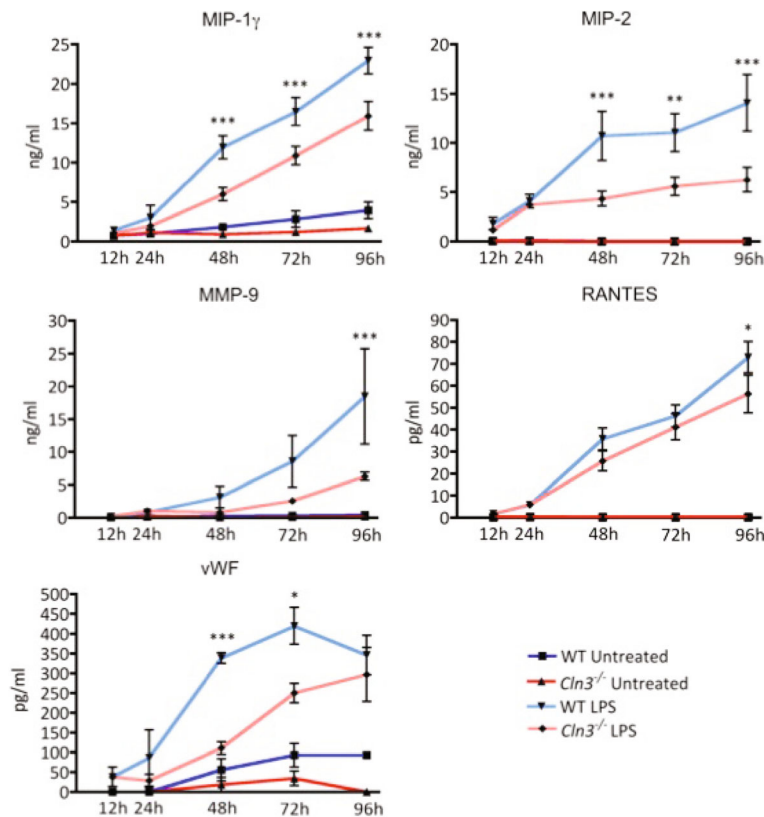


Fig. 5 Altered protein secretion profiles of *Cln3*^{-/-} microglia. Secreted protein levels were quantified from supernatants collected from WT and *Cln3*^{-/-} microglial cultures grown under basal conditions, or after stimulation with LPS. Following quantitative analysis of 59 soluble factors, 5 were found to be secreted at significantly lower levels by *Cln3*-deficient (*Cln3*^{-/-}) microglia over time in culture compared to wild type (WT) microglial cultures. These included the chemokines MIP-1- γ , MIP-2 and RANTES, the glycoprotein vWF, and the matrix metalloproteinase MMP-9

Cln3^{-/-} astrocytes after 24 ($59.6 \pm 12.2\%$ decrease in WT vs. *Cln3*^{-/-}) and 48 h ($51.9 \pm 14.3\%$ decrease in WT vs. *Cln3*^{-/-}). These data suggest a failure of *Cln3*^{-/-} astrocytes to secrete GSH, consistent with the observation that significantly higher levels of extracellular GSH could be detected in the medium from WT vs. *Cln3*^{-/-} astrocytes after stimulation (Fig. 7b).

Since the method described above only measures the reduced form of glutathione, it is conceivable that these results could be explained by an opposing change in the level of oxidized glutathione (GSSG). This possibility was excluded by indirectly measuring intracellular GSSG levels by converting GSSG to GSH using glutathione reductase (GR). Subsequent HPLC analysis revealed no measurable difference between the intracellular levels of GSH and total glutathione (after GR treatment) in any of these samples, suggesting that all the intracellular glutathione in both WT and *Cln3*^{-/-} astrocytes is present in the reduced form (data not shown).

The actin cytoskeleton is important for exocytosis in astrocytes [70], and it appears abnormally organized in *Cln3*^{-/-} astrocytes (Fig. 3A). Therefore, the possible connection between the disrupted actin cytoskeleton and

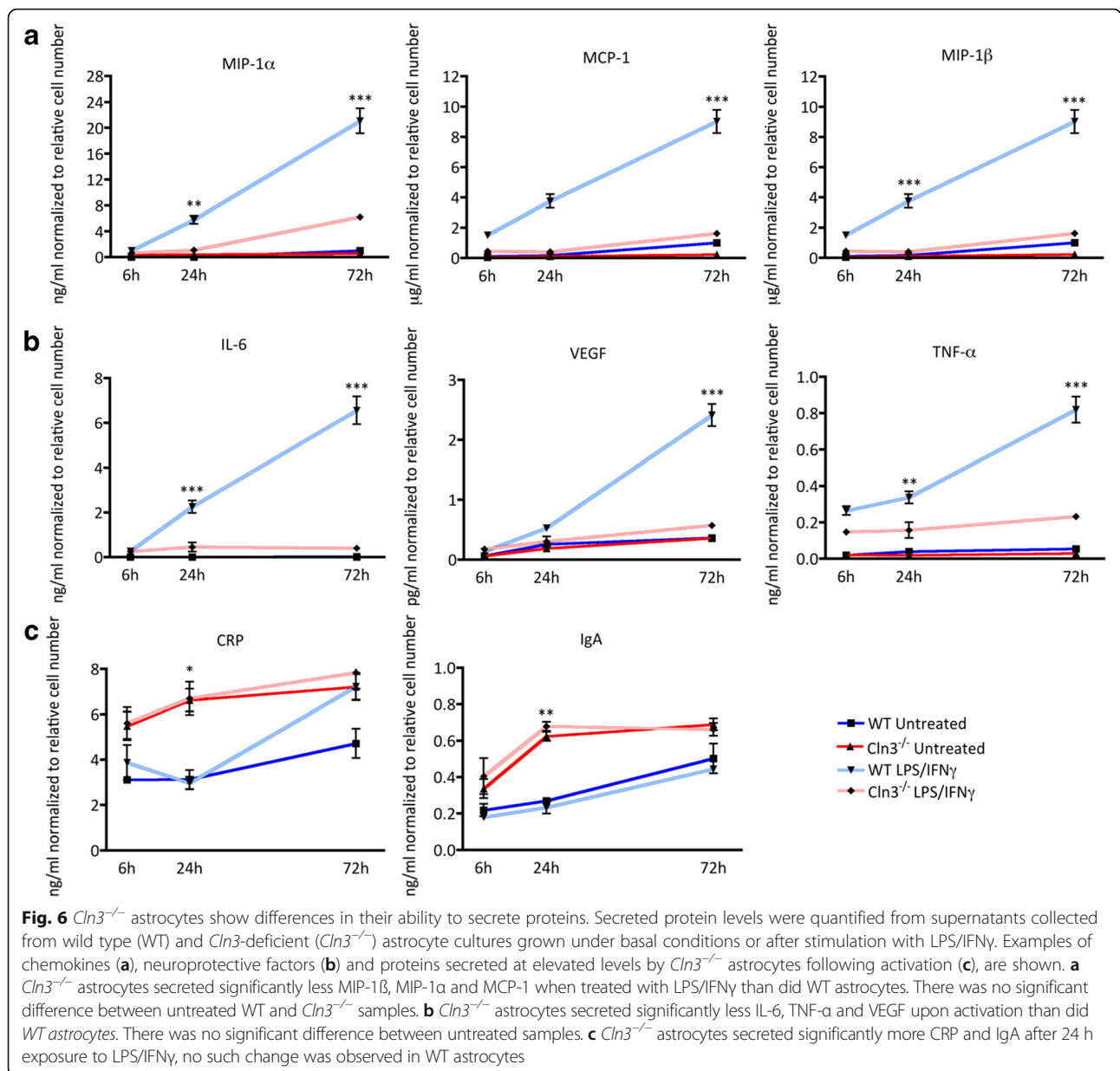
impaired glutathione secretion was examined by treating WT astrocytes with cytochalasin D (1 μ M for 30 min before the 8 h measurement period) to inhibit the polymerization of actin. This resulted in a significant reduction ($50.1 \pm 12.7\%$) in the levels of extracellular glutathione in LPS/IFN γ treated WT astrocytes (Additional file 6: Figure S5). Thus, a normal actin cytoskeleton is essential for glutathione secretion by astrocytes.

Since the defects in *Cln3*^{-/-} astrocytes appeared more profound than those in microglial cells, and the cytoskeletal disruption observed in these cells could impact many of their functions, we investigated whether *Cln3*^{-/-} astrocytes could perform other key tasks effectively.

An impaired ability of *Cln3*^{-/-} astrocytes to migrate, clear glutamate and signal via Ca²⁺

Slower migration of *Cln3*^{-/-} astrocytes

Astrocyte migration is associated with local inflammation [17] and requires cytoskeletal rearrangements, raising the likelihood that this process may be impaired in *Cln3*^{-/-} astrocytes. To test this possibility, an Essen Wound-maker was used to create a cell-free area in confluent cultures of WT and *Cln3*^{-/-} astrocytes, and the



ability of the cells to migrate and fill this space assessed. WT astrocytes migrated into the cell free area rapidly and nearly closed the gap within 24 h (Fig. 8a). The distance covered by *Cln3*^{-/-} astrocytes over this same time was significantly reduced (Fig. 8b). The rate of migration was significantly decreased in the absence of CLN3 (WT 5.3 ± 0.6 μm/h vs. 2.3 ± 0.6 μm/h for *Cln3*^{-/-} astrocytes) (Fig. 8c), and WT astrocytes migrated further and faster than *Cln3*^{-/-} astrocytes.

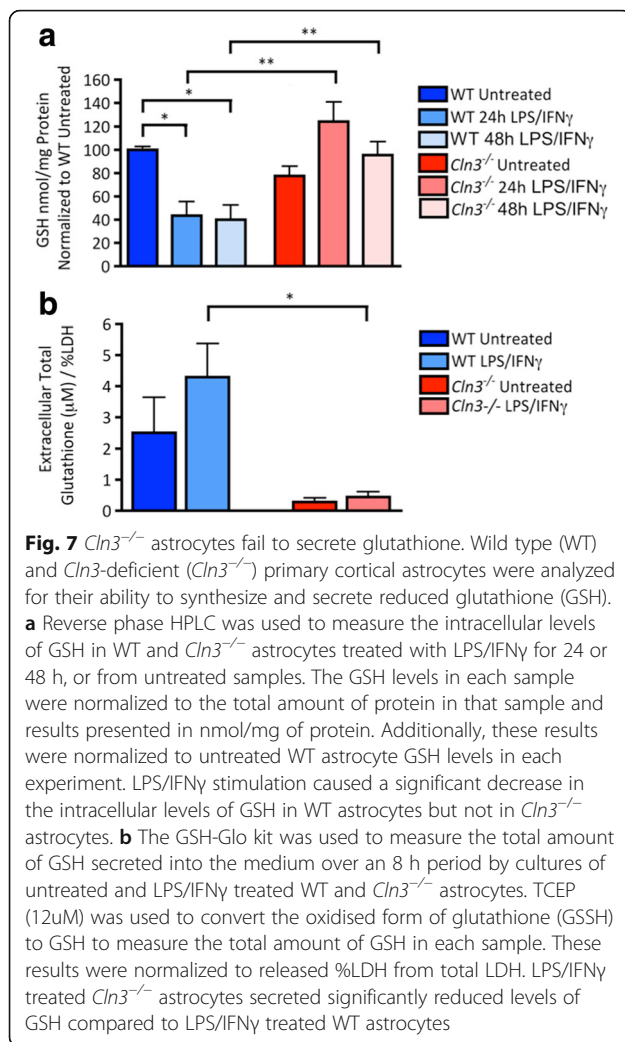
***Cln3*^{-/-} astrocytes show impaired glutamate clearance**

A feature of JNCL pathogenesis is an elevated level of glutamate in the brains of *Cln3*^{-/-} mice [65]. A glutamate assay kit revealed that *Cln3*^{-/-} astrocytes take-up

significantly less glutamate from the medium than WT astrocytes (48.0% ± 14.0% reduction in glutamate uptake, Fig. 9), suggesting that *Cln3*^{-/-} astrocytes may not be able to scavenge excess extracellular glutamate as effectively as WT astrocytes.

***Cln3*^{-/-} astrocytes do not form a synchronized calcium wave**

Calcium signaling forms the basis for astrocyte-astrocyte and astrocyte-neuron communication in the CNS [103]. Indeed, Ca²⁺ is exploited by astrocytes as an intercellular signal for long distance communication through functionally connected astrocyte networks. This synchronous calcium wave is propagated via gap junctions and has the potential to coordinate neurotransmitter release at



all synapses within the astrocyte syncytium [92]. To explore the ability of WT and *Cln3*^{-/-} astrocytes to generate a calcium wave in response to ATP [46], these cells were plated on PDL-coated 25 mm coverslips at high density so that they formed a continuous sheet. Calcium measurements were obtained after loading cells with the ratio-metric and sensitive calcium indicator, Fura-2 AM, with results obtained over the first 20 min presented (Fig. 10).

A calcium wave, which initiated approximately 6 min after the start of the recordings, was obvious in high-density WT astrocyte cultures (Fig. 10, yellow bar). This synchronized, [Ca²⁺]_i elevation among WT astrocytes had a large amplitude (from 150% up to nearly 250% increase compared to baseline), and a clear plateau phase indicating prolonged high intracellular calcium levels after the initiation of the wave (Fig. 10). In sheet-forming *Cln3*^{-/-} astrocyte cultures, however, no such synchronized [Ca²⁺]_i elevation was observed (Fig. 10). Instead, these *Cln3*^{-/-} astrocytes exhibited sporadic calcium oscillations that did not propagate as an intercellular

calcium wave. This suggests that the communication between *Cln3*^{-/-} astrocytes may be severely compromised, and this in turn could impact on the control of neurotransmission.

Altered *Cln3*^{-/-} neuronal morphology

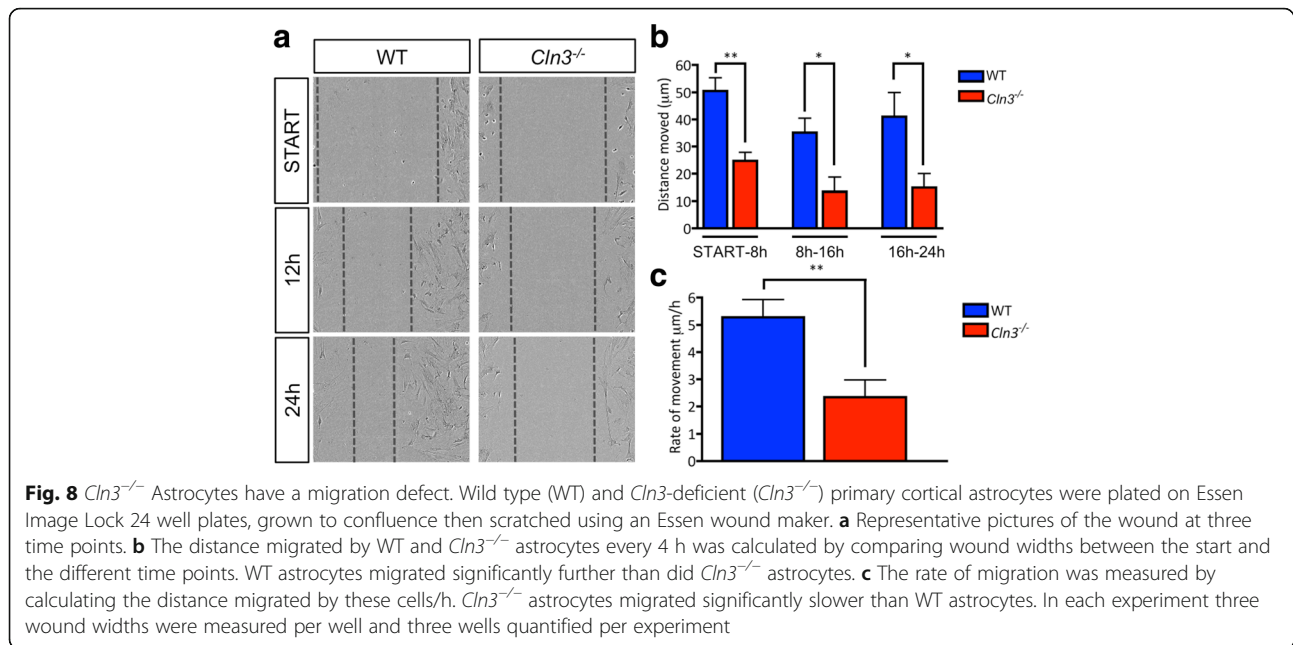
We next investigated the in vitro phenotypes of *Cln3*-deficient cortical neurons. In the absence of any overt effect on intrinsic neuronal survival this analysis initially focused upon soma size, and neurite complexity.

Qualitatively, the distribution of MAP2 immunoreactivity appeared different in neurons of different genotypes, appearing to be more intense within the apparently smaller cell soma of *Cln3*^{-/-} neurons compared to the more even distribution within the soma and processes of WT neurons (Fig. 11A). Cell area measurements revealed *Cln3*^{-/-} neuron soma to be significantly smaller than WT cells (Fig. 11B), and their neurite complexity was altered (Fig. 11C). Although *Cln3*^{-/-} neurons had slightly more branching points than WT neurons, these differences were not statistically significant. However, the length of the longest primary neurite was significantly shorter in *Cln3*^{-/-} neurons (Fig. 11C, e), which also displayed a significantly shorter network of primary neurites (Fig. 11C, f).

JNCL glia are detrimental to neuronal health

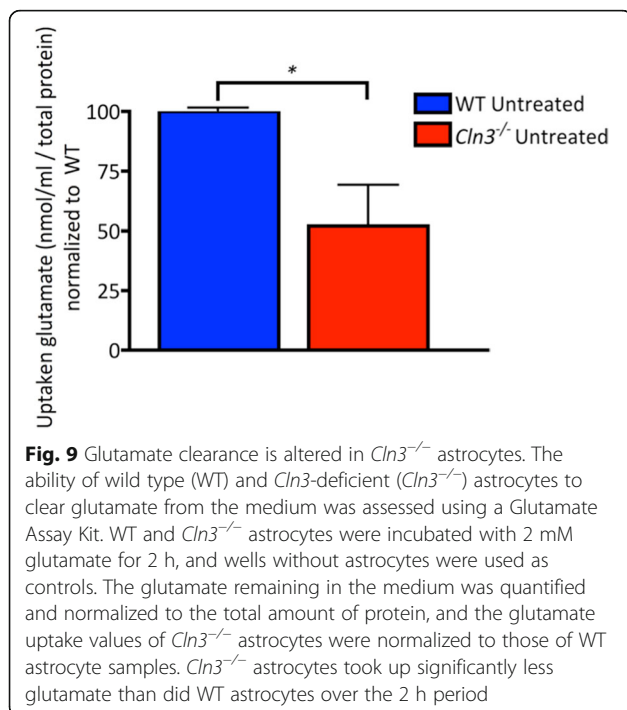
The finding that *Cln3*^{-/-} astrocytes, and to a lesser extent microglia, have a compromised biology suggested that *Cln3*^{-/-} glia could potentially have a detrimental effect on neuronal health. To test this hypothesis, primary cortical WT or *Cln3*^{-/-} astrocytes and microglia were seeded on top of WT or *Cln3*^{-/-} primary cortical neuronal cultures. Glia in these co-cultures were not exposed to LPS or LPS/IFN γ . As a readout of neuronal health we analyzed the same neuronal phenotypes defined above, and assessed if there were any impact upon neuronal survival, and neurite complexity in these co-cultures.

Co-cultures were monitored for 7 days, and over this time, those composed of WT mixed glia and WT neurons remained healthy, with very few dying cells present (Fig. 12A, panel a). However, from day 2 onwards MAP2 immunoreactivity in processes of WT neurons grown with *Cln3*^{-/-} glia became increasingly punctate, suggesting compromised neuronal health, and by day 7 many dying neurons with red nuclei were observed (Fig. 12A, panel b). The morphology of the surviving WT neurons was also dramatically altered, showing a reduction in soma size and neurite complexity (Additional file 6: Figure S5). The co-culture combination of *Cln3*^{-/-} neurons with *Cln3*^{-/-} glia was the most detrimental for neuronal health, since by day 7 most of the *Cln3*^{-/-} neurons in these co-cultures were either dead (Fig. 12A, panel d), or appeared severely compromised, as judged by their morphology (Additional file 7: Figure S6). Interestingly, WT glia had



a positive influence on both the survival and morphology of *Cln3*^{-/-} neurons (Fig. 12A, panel c).

In these co-cultures, we observed that in the presence of *Cln3*^{-/-} neurons, *Cln3*^{-/-} astrocytes had smaller cell bodies and longer, more numerous processes (reminiscent of activated astrocytes in culture), when compared to *Cln3*^{-/-} astrocytes grown with WT neurons (Additional file 8: Figure S7). No such morphological change was evident



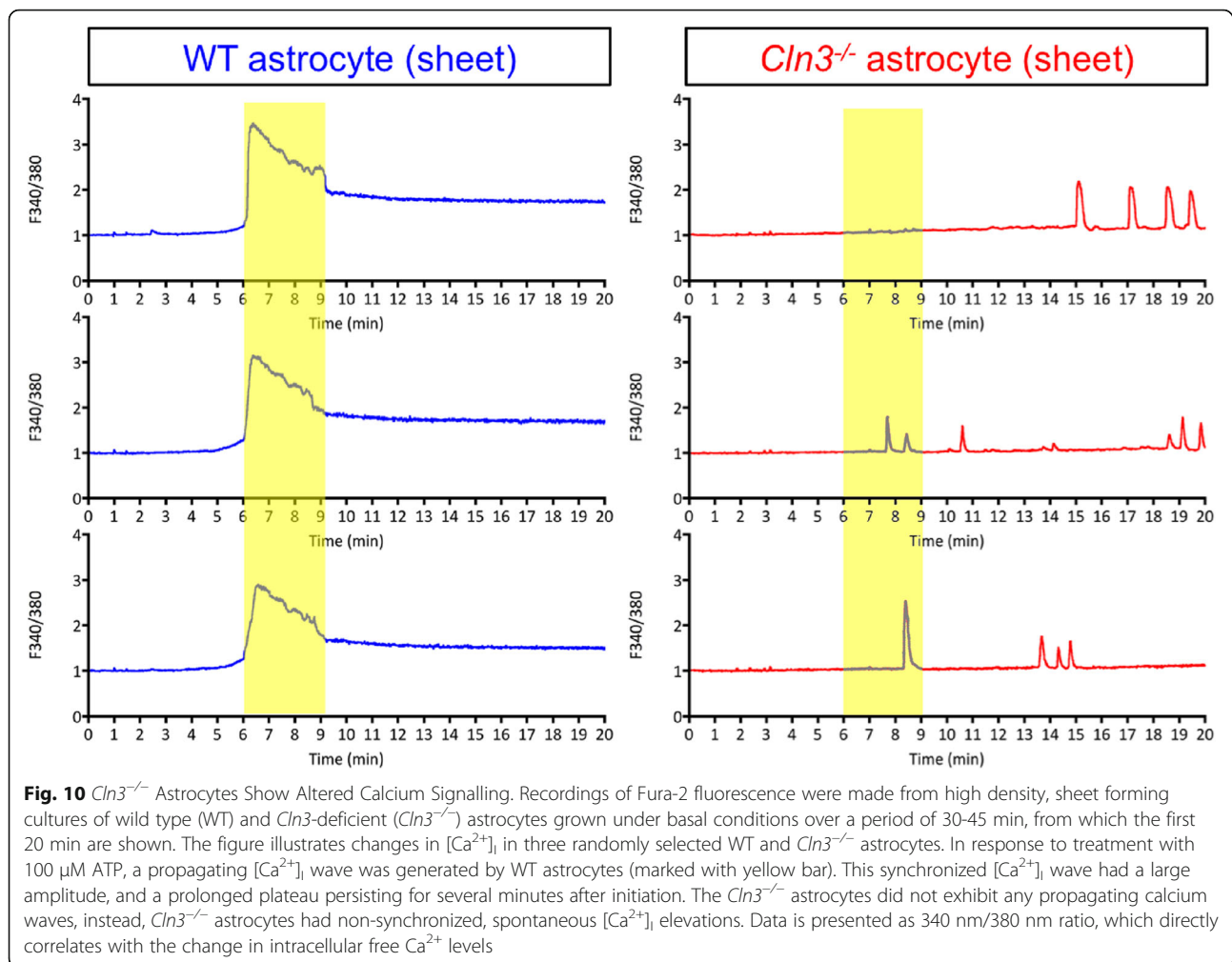
when *Cln3*^{-/-} neurons were co-cultured with WT glia, suggesting that *Cln3*^{-/-} astrocytes are more sensitive to the environment than their WT counterparts. Under all culture conditions the morphology of microglia were heterogeneous with some cells bearing processes and others being fully rounded (data not shown).

These morphological findings correlated well with measurements of released LDH from the different co-cultures (Fig. 12B). The lowest LDH levels were observed when WT glia and neurons were co-cultured, but these levels increased dramatically when *Cln3*^{-/-} glia were co-cultured with WT or *Cln3*^{-/-} neurons (Fig. 12B). However, when *Cln3*^{-/-} neurons were co-cultured with WT, rather than *Cln3*^{-/-} glia, a lower level of LDH release was observed, possibly due to the supportive influence of the WT cells (Fig. 12B). As might be expected, there was significantly more LDH released in *Cln3*^{-/-} glia/*Cln3*^{-/-} neuron co-cultures than in WT glia/WT neuron co-cultures (Fig. 12B).

These results suggest that *Cln3*^{-/-} glia are detrimental to the health of both WT and *Cln3*^{-/-} neurons, with *Cln3*^{-/-} neurons being the most vulnerable. In contrast, WT glia appeared to have a positive influence on *Cln3*^{-/-} neurons, not just on survival, but also upon neurite complexity.

Discussion

This study highlights the attenuated morphological transformation of astrocytes and microglia in both human and murine CLN3 disease. From studying cultured *Cln3*^{-/-} astrocytes and microglia we have provided further support that their biology is impaired (see 16 [99]). Although



specific microglial defects are certainly evident, astrocytes appear more severely affected, and these astrocyte defects may be due to the cytoskeletal abnormalities they display. Most importantly, we show that while *Cln3*^{-/-} neurons are themselves compromised, the combined presence of *Cln3*^{-/-} astrocytes and microglia exacerbate these phenotypes and have a detrimental effect on neuronal organization and health. Taken together, these data provide novel information that these glial cells exert a negative influence upon neurons and may directly influence neurodegeneration in CLN3 disease.

Defects in glial biology could underlie components of CLN3 disease pathogenesis

Despite concerted efforts, the normal function of CLN3 remains poorly understood and it is unclear how its deficiency relates to cellular dysfunction, including that of astrocytes or microglia. Despite microglia accumulating large amounts of storage material, which is also present in astrocytes, the current view is that it is not the accumulation of storage material *per se* that directly causes

cellular dysfunction and death. Instead it appears that other, as yet unknown, consequences of *Cln3*-deficiency are responsible. Our data suggest that these negative consequences of *Cln3*-deficiency are also evident in glia, rather than being confined to neurons, and it will be important to gain *in vivo* correlates of the data we have found in tissue culture.

Nevertheless, all the biological defects we found associated with cultured *Cln3*^{-/-} astrocytes and microglia can plausibly be linked to known features of CLN3 disease pathogenesis, including the potential involvement of glutamate mediated excitotoxicity and oxidative stress. Indeed, although *in vitro* systems do not necessarily accurately reflect the *in vivo* situation, a series of similarities between our tissue culture observations and other reports exist. For example, the attenuated ability of *Cln3*^{-/-} glia to respond morphologically to stimulation is also evident in the *Cln3*^{-/-} mouse brain *in vivo* (Fig. 1, and [68, 69]), and a comparatively lower level of glial activation is evident in human CLN3 disease ([90], this study). This is in marked contrast to the robust glial activation and morphological

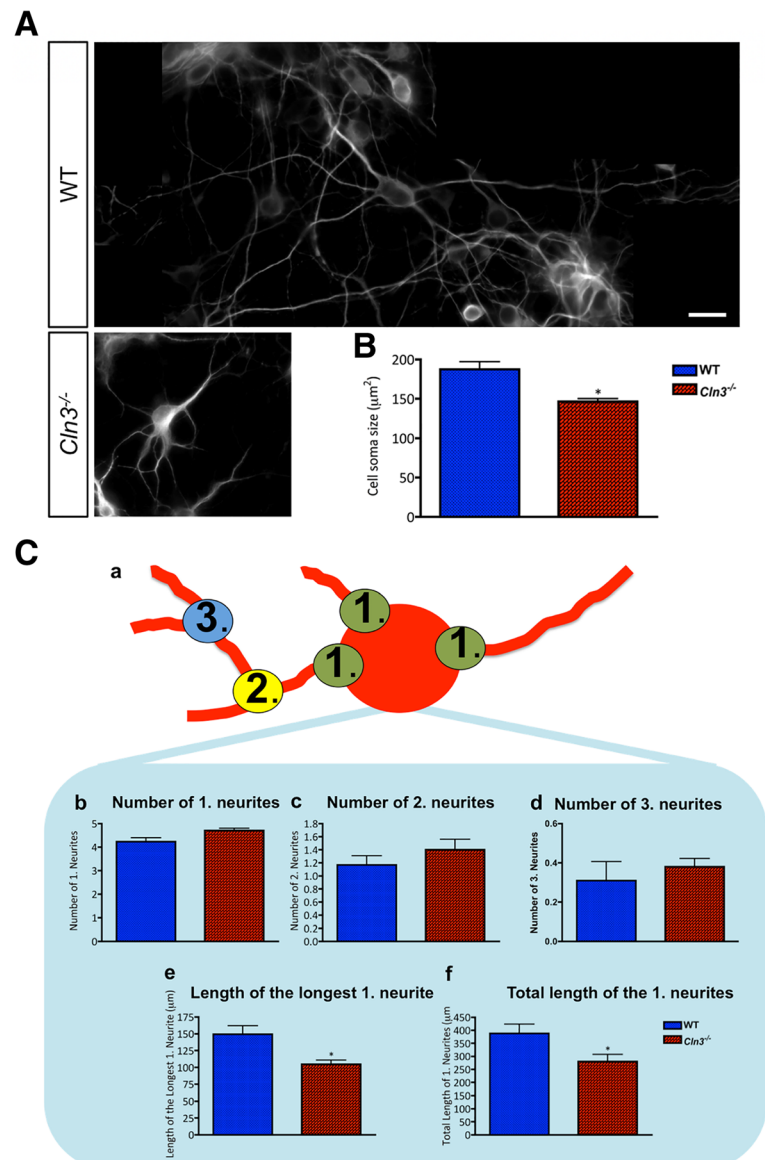


Fig. 11 *Cln3*^{-/-} cortical neurons are small and have shortened processes. The morphology of primary cortical wild type (WT) and *Cln3*-deficient (*Cln3*^{-/-}) neurons was compared quantitatively using ImageJ after cultures were fixed and immunostained with MAP2. **A** MAP2 expressing WT and *Cln3*^{-/-} cortical neurons showing that, unlike in WT cells, MAP2 immunoreactivity is not evenly distributed between the cell soma and processes in *Cln3*^{-/-} neurons. **B** Quantification of cell soma size revealed that WT neurons have a significantly bigger cell soma than *Cln3*^{-/-} neurons. **C** Quantitative assessment of neurite complexity, **(a)** schematic illustration of neurite branching, showing primary neurites (1) originating directly from the cell body, secondary neurites (2) originating from primary neurites, and tertiary neurites (3) originating from secondary neurites. The length of each of the primary neurites was analyzed, and the sum of the length of all of these neurites calculated. **(b, c and d)** the number of each type of neurite did not differ between WT and *Cln3*^{-/-} neurons. **e** WT neurons had a longer primary neurite, and **(f)** an increased total length of the primary neurites compared to *Cln3*^{-/-} neurons. Data in **(b)** and **(c)** represent mean ± SEM from approximately 40 individual cells analyzed in each experiment. This experiment was repeated three times. The scale bar in **(A)** is 20 µm

transformation observed in all other forms of murine [24, 40, 47, 59, 64, 77, 93], ovine [61], or human NCL [90].

The impaired ability of *Cln3*^{-/-} astrocytes to take up extracellular glutamate is consistent with the reduced expression of the glutamate receptor EAA2 in human

CLN3 brain tissue [36], the reduced GLAST and glutamine synthetase levels evident in *Cln3*^{Δex7/8} mice [16], and presynaptic elevation of glutamate in *Cln3*^{-/-} mice [20]. Furthermore, neurons in these mice appear particularly vulnerable to AMPA- and NMDA-receptor stimulation [32, 43], perhaps because of excitotoxicity due to these

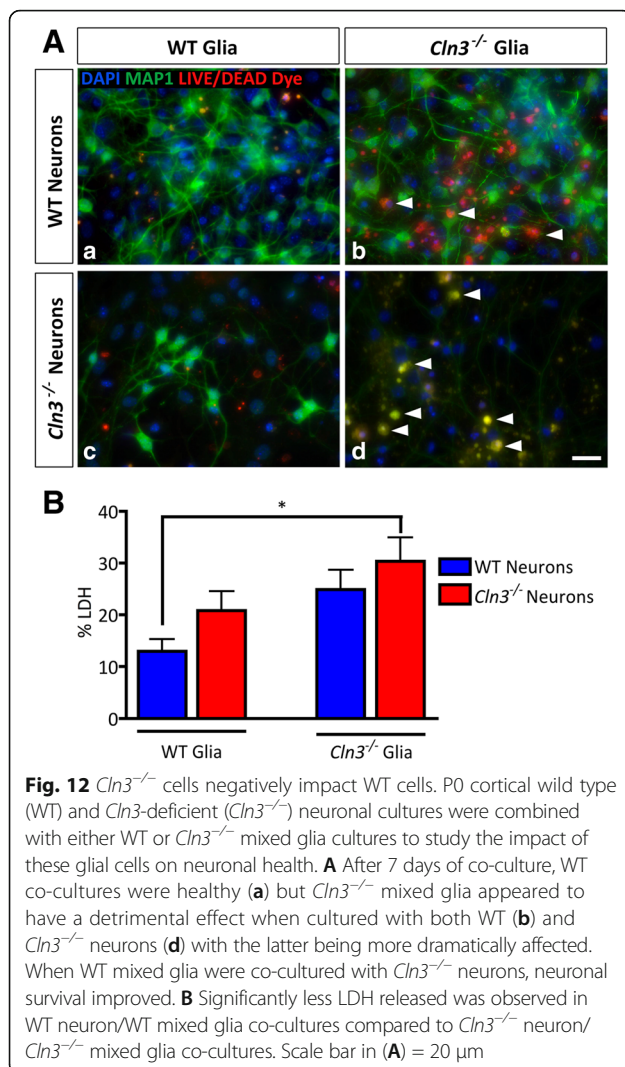


Fig. 12 *Cln3*^{-/-} cells negatively impact WT cells. P0 cortical wild type (WT) and *Cln3*-deficient (*Cln3*^{-/-}) neuronal cultures were combined with either WT or *Cln3*^{-/-} mixed glia cultures to study the impact of these glial cells on neuronal health. **A** After 7 days of co-culture, WT co-cultures were healthy (**a**) but *Cln3*^{-/-} mixed glia appeared to have a detrimental effect when cultured with both WT (**b**) and *Cln3*^{-/-} neurons (**d**) with the latter being more dramatically affected. When WT mixed glia were co-cultured with *Cln3*^{-/-} neurons, neuronal survival improved. **B** Significantly less LDH released was observed in WT neuron/WT mixed glia co-cultures compared to *Cln3*^{-/-} neuron/*Cln3*^{-/-} mixed glia co-cultures. Scale bar in (**A**) = 20 μ m

elevated levels of glutamate, and different classes of glutamate antagonists provide some therapeutic benefit in *Cln3*^{-/-} mice [41–44].

Another pivotal astrocyte function is the synthesis and secretion of the anti-oxidant glutathione (GSH) that plays a crucial role in protecting neurons against oxidative stress [31, 33]. Our data reveal that *Cln3*^{-/-} astrocytes can still make, but fail to secrete, glutathione. Indeed, *Drosophila* lacking *CLN3* function are hypersensitive to oxidative stress [89], and oxidative damage has also been reported in both mouse [6] and human *CLN3* disease [3].

Our calcium signaling studies revealed that *Cln3*^{-/-} astrocytes fail to generate a calcium wave after exposure to ATP, providing further evidence that intercellular signaling between *CLN3* astrocytes may be compromised [16], and it will be important to study calcium signaling in acute slice preparations. This could impact upon the control of neurotransmission in the JNCL brain and

perhaps contribute to the seizure activity observed in this disease [58, 67, 88].

All these functional problems associated with *Cln3*^{-/-} astrocytes and some of the phenotypes seen in vivo may at least partially be explained by their disrupted cytoskeleton, since expression of glutamate receptors at the cell surface [48], calcium signaling among astrocytes [27] and secretion by astrocytes [45] have all been shown to require a functional actin cytoskeleton. Indeed, the altered shape of *Cln3*^{-/-} astrocytes, along with the difficulties they exhibit in changing their morphology in vivo and in our culture, may plausibly result from their disrupted cytoskeleton and it will be important to study this in more detail and determine their importance in vivo. How these defects in the cytoskeleton are related to *Cln3*-deficiency is unclear, but a functional interaction of *CLN3* with non-muscle myosin-IIB has been reported [34], and a migration defect in *Cln3*^{-/-} mouse embryonic fibroblasts that is consistent with our novel data for the impaired migration of *Cln3*^{-/-} astrocytes.

Alteration in protein secretion could impair cell-cell interactions

The protein secretion profiles of both *Cln3*^{-/-} astrocytes and microglia was altered following activation, with astrocytes being more severely affected, showing significantly reduced levels of secretion of a range of proteins (Additional file 5: Tables S1 and S2). Our data are consistent with the reported evidence that LPS stimulation also results in a lower level of cytokine secretion by microglia derived from *Cln3* ^{Δ ex7/8} mice bearing the 1 kb deletion that is present in most *CLN3* disease cases [99]. Intriguingly, these authors suggest that the responses of *Cln3*-deficient microglia are stimulus-dependent, with ceramide or neuronal cell lysates resulting in an increased inflammasome activation and expression of a wide array of proinflammatory cytokines and chemokines [99]. However, it should be borne in mind that these authors used *Cln3* ^{Δ ex7/8} 'knock-in' mice rather than the *Cln3*^{-/-} mice used in our study, and this may influence the different phenotypes observed.

The biological significance of our data showing altered secretion profiles of *Cln3*-deficient glia remains unclear, but the downstream effects are likely to be complex given the multiple and possibly synergistic effects of secreted proteins on different cell types under both physiological and pathological situations [1, 19, 73, 74, 83]. It is also important to emphasize that what we have detected in vitro may not reflect the in vivo situation. Nevertheless, our data raise the possibility that cell-cell communication via secreted factors may potentially be perturbed in the *CLN3* disease brain. In addition, many of the neuroprotective proteins routinely secreted by WT astrocytes after activation [15, 30, 57, 76, 95, 100], are also significantly

reduced in cultures of activated *Cln3*^{-/-} astrocytes, with two of these proteins (MCP-1 and RANTES) also being secreted at significantly lower levels by *Cln3*^{-/-} microglia. The reduced expression of IL-6, RANTES and MCP-1, which can protect neurons against NMDA receptor-mediated excitotoxicity, may be especially relevant given the increased sensitivity of *Cln3*-deficient neurons to AMPA receptor-mediated excitotoxicity [43, 65]. Thus, defects in glial-glial and glial-neuronal interactions have the potential to have a significant impact on neuronal health in CLN3 disease, a suggestion that prompted us to grow mixed glial co-cultures with neurons.

Until in vivo data regarding the relative levels of chemokines and cytokines become available, our in vitro data demonstrating altered secretion levels should be interpreted with caution, especially as these data come from pharmacologically stimulated cultures. However, the reduction in chemokine secretion by stimulated *Cln3*^{-/-} glia in culture may also have a detrimental effect on the recruitment of microglia to sites of inflammation [72, 81], and partly explain the limited infiltration of monocytes and lymphocytes in CLN3 disease [50]. This reduced chemokine expression may also be associated with the attenuated microglial activation observed in vivo ([68, 69, 90], this study). Conversely, *Cln3*^{-/-} astrocytes showed a reduced ability to secrete anti-inflammatory cytokines, such as IL-4, IL-10 and IL-2, which could also prove harmful. Both genetic and pharmaceutical approaches to attenuate the adaptive immune response have been shown to result in a significant improvement in the pathology of *Cln3*^{-/-} mice [80].

Cln3^{-/-} glia are detrimental to neuronal health

Defects in glial biology have been associated with neuronal dysfunction and loss in many neurodegenerative diseases, see [28, 29, 66, 75, 85]. Both positive and negative roles for astrocytes have been proposed, and recently, more active roles for astrocytes and microglia in directly influencing neuron survival have been postulated [49]. Using a co-culture approach, we have shown here that *Cln3*^{-/-} astrocytes and microglia can indeed influence neuronal health, affecting the size and neurite complexity of both WT and *Cln3*^{-/-} neurons, but also causing the death of the latter, which appear to be inherently compromised by *Cln3* deficiency. From our data it is not clear whether it is the *Cln3*^{-/-} astrocytes or microglia, or a combination of both cell types that negatively influence neuronal health. It has been suggested that astrocytes can be primed by microglia to become toxic to neurons [49], and it will be important to determine if similar mechanisms operate in CLN3 disease, especially in an in vivo context. However, it is apparent that despite any overt intrinsic survival defect in these short-term cultures, *Cln3*^{-/-} neurons appeared to be compromised in terms of their morphology, and it will be important to investigate their functional status.

In other lysosomal storage disorders, introducing astrocyte-specific gene mutations is sufficient to harm neurons [21, 28], and correcting these defects is beneficial [102]. In our studies co-culturing *Cln3*^{-/-} neurons with healthy glia improved many of their morphological defects, and resulted in an increase in their survival, suggesting that healthy glia appear to have a neuroprotective effect. This is in marked contrast to the apparently negative influence of *Cln3*^{-/-} glia upon both healthy and mutant neurons. It remains to be seen how accurately our data from cultures reflect the in vivo situation, and for this reason we have generated cell-type specific mutant mice in which we can inactivate *Cln3* in defined cell types in our future studies. Nevertheless, our data from this in vitro study suggests that therapies that target glia in addition to neurons may be an important step forward in treating this devastating disease.

Conclusion

In summary, this study has provided evidence that both astrocytes and microglia derived from *Cln3*-deficient mice are dysfunctional, and this may contribute to directly harming neurons in this disorder. It will be important to investigate the underlying mechanisms and the extent of pathological involvement of each cell type in vivo. Given the close association between glial activation and neuron loss in these disorders, it will be important to determine whether glia also contribute to neuron loss in the other forms of NCL. This will information will be crucial for determining whether strategies that target glia will be of therapeutic value.

Additional files

Additional file 1: Figure S1. Composition of Astrocyte Cultures.

Primary cortical astrocyte cultures generated from P1–2 wild type (WT) and *Cln3*-deficient (*Cln3*^{-/-}) mice were grown for one week after the addition of Ara C, and in this example stimulated for a further 48 h before being immunostained with CD68 to identify microglia, O4 to identify oligodendrocytes, MAP2 together with NeuN to identify neurons and GFAP to identify astrocytes. DAPI was used to visualize all nuclei. WT and *Cln3*^{-/-} astrocyte cultures contained few microglia or oligodendrocytes (A) and no neurons (B), and the vast majority of cells in *Cln3*^{-/-} astrocyte cultures were GFAP-expressing astrocytes (C), with a higher proportion of DAPI + ve cells showing much weaker or no GFAP immunostaining in WT astrocyte cultures. Scale bar in (A) and (C) = 50 μm, and in (B) = 20 μm. (TIFF 13274 kb)

Additional file 2: Figure S2. Astrocyte Cultures stained with Glutamine Synthetase. Since GFAP expression can be down-regulated by astrocytes in culture, we also immunostained a parallel series of primary cortical astrocyte cultures from P1–2 wild type (WT) and *Cln3*-deficient (*Cln3*^{-/-}) mice with glutamine synthetase as an additional marker of astrocyte phenotype, after an additional 48 h in culture. DAPI was used to visualize all nuclei. Virtually all the DAPI stained cells (blue) were also immunoreactive for glutamine synthetase (red) in both WT and *Cln3*^{-/-} cultures, and this was quantified as being 99.71 ± 0.15% (WT) and 99.29 ± 0.21% (*Cln3*^{-/-}) of the DAPI stained cells, respectively. Scale bar = 20 μm. (TIFF 2129 kb)

Additional file 3: Figure S3. Composition of Microglial Cultures.

Primary cortical microglial cultures generated from P2–4 wild type (WT)

and *Cln3*-deficient (*Cln3*^{-/-}) mice were immunostained with CD68 to identify microglia, O4 to identify oligodendrocytes, TuJ1 to identify neurons and GFAP to identify astrocytes. DAPI was used to visualize all nuclei. Practically all cells were CD68 expressing microglial cells (A), with virtually no cells expressing GFAP or O4 (B). Scale bar = 20 μm. (TIFF 8572 kb)

Additional file 4: Figure S4. LPS and INFγ induced signaling is not altered in *Cln3*^{-/-} glia. Wild type (WT) and *Cln3*-deficient (*Cln3*^{-/-}) astrocytes were immunostained with GFAP and microglia with CD68. DAPI was used to visualize all nuclei. Few WT or *Cln3*^{-/-} glia with nuclear-located P-p65 (A, C) and WT or *Cln3*^{-/-} astrocytes with nuclear-located P-STAT1 (B) were observed under basal conditions, while the vast majority of both WT and *Cln3*^{-/-} glia had P-STAT1 (B) and/or P-p65 (A, C) expressed in the nucleus upon stimulation. The percentage of cells expressing P-STAT1 and/or P-p65 in the nucleus was determined by counting 5 random fields per coverslip and a minimum of three coverslips per experiment. The means ±SEM shown are from three separate experiments. (TIFF 11278 kb)

Additional file 5: Table S1. Protein secretion profile of WT and *Cln3*^{-/-} astrocytes under basal conditions. Differences between levels of secreted proteins in supernatants collected after 6 h, 24 h and 72 h from *Cln3*^{-/-} and WT astrocyte cultures grown under basal conditions. Data presented as % change (values from *Cln3*^{-/-} astrocyte samples compared to corresponding WT astrocyte values) ± SEM from three biological replicates. (-) indicates proteins whose levels were below quantifiable detection levels. **Table S2.** Protein secretion profile of WT and *Cln3*^{-/-} astrocytes after stimulation. Differences between levels of secreted proteins in supernatants collected from *Cln3*^{-/-} and WT astrocytes after activation with LPS/INFγ for 6 h, 24 h and 72 h. Data presented as % change (*Cln3*^{-/-} astrocyte sample values compared to corresponding WT astrocyte values) ± SEM from three biological replicates. (-) indicates proteins whose levels were below quantifiable detection levels. (PDF 676 kb)

Additional file 6: Figure S5. An intact actin cytoskeleton is essential for glutathione secretion. To study the importance of the actin cytoskeleton for GSH secretion in astrocytes Cytochalasin D (1 μM) was added to wild type (WT) astrocytes for 30 min prior to the start of the 8 h period over which the accumulation of secreted GSH in the medium was measured. Cells were then fixed and the actin cytoskeleton visualized with phalloidin. DAPI was used to visualize all nuclei. (A) Cytochalasin D clearly disrupted the F-actin filament organization in WT astrocytes. (B) Perturbing actin cytoskeletal polymerization significantly inhibited GSH secretion by WT astrocytes. Scale bar in (A) = 10 μm. (TIFF 13687 kb)

Additional file 7: Figure S6. *Cln3*^{-/-} mixed glia negatively impact neuronal morphology. Representative images of MAP2 expressing Wild type (WT) and *Cln3*-deficient (*Cln3*^{-/-}) neurons co-cultured with WT or *Cln3*^{-/-} mixed glia are shown in (A) and quantification of neuronal soma size and neurite complexity under these different growth conditions are shown in (B-D). *Cln3*^{-/-} neurons co-cultured with *Cln3*^{-/-} mixed glia had a significantly smaller cell soma than did WT neurons co-cultured with WT glia (Aa, Ad, quantified in B). The substitution of WT mixed glia for *Cln3*^{-/-} mixed glia significantly increased the soma size of *Cln3*^{-/-} neurons (Ac, Ad, quantified in B). The total length of primary neurites was significantly reduced when *Cln3*^{-/-} neurons were co-cultured with *Cln3*^{-/-} mixed glia compared to when WT neurons were co-cultured with WT glia (Aa, Ad, quantified in C). The presence of *Cln3*^{-/-} mixed glia also significantly reduced the length of the longest primary neurite in both WT and *Cln3*^{-/-} neurons, and the length of the longest primary neurite was greater when WT neurons were co-cultured with WT glia than when *Cln3*^{-/-} neurons were co-cultured with *Cln3*^{-/-} mixed glia (C). The number of primary neurites (1. neurites that are extended from cell bodies) did not differ among the different co-cultures, but *Cln3*^{-/-} mixed glia significantly reduced the number of both secondary neurites (2. neurites that branch off from primary neurites) and tertiary neurites (3. neurites that branch off from secondary neurites) in *Cln3*^{-/-} neurons (D). The presence of *Cln3*^{-/-} mixed glia also significantly reduced the number of tertiary neurites in WT neurons (D). Scale bar in A = 20 μm. (TIFF 5626 kb)

Additional file 8: Figure S7. Altered astrocyte morphology in co-cultures with *Cln3*^{-/-} neurons. When co-cultured with *Cln3*-deficient (*Cln3*^{-/-}) neurons, *Cln3*^{-/-} astrocytes (immunostained with GFAP, green)

changed shape, having smaller cell bodies and longer more numerous processes (reminiscent of activated astrocytes in culture). No such change was observed when *Cln3*^{-/-} astrocytes were grown with wild type (WT) neurons or when *Cln3*^{-/-} neurons were grown with WT astrocytes. Scale bar = 20 μm. Nuclear stain DAPI (blue), Live/dead stain (red). (TIFF 10686 kb)

Acknowledgements

The generous assistance of Myriad RBM in running the protein secretion assays is gratefully acknowledged. Natalie Masento (human section staining) and Sashya De Silva (glutamine synthetase staining) are acknowledged for their skilled assistance. Sybille Dihanich and Helen Brooks were recipients of Medical Research Council DTA studentships, and Lotta Parviainen by an Institute of Psychiatry, Psychology & Neuroscience departmental studentship. Prof. Tammy Kielian, Dr. Jill Weimer, Dr. Alison Barnwell, Dr. Allison Najafi and Dr. Hemanth Ramesh Nelvagal are thanked for their very useful comments on the manuscript.

Funding

This study was supported by the Beyond Batten Disease Foundation, the Batten Disease Support and Research Association (USA), the Batten Disease Family Association (UK), the Saoirse Foundation and Irish Health Research Board, The NCL Stiftung, The Children's Brain Disease Foundation, The Natalie Fund and the Bletsoe Family.

Authors' contributions

The study was designed and supervised by JDC and BPW, with expert advice and guidance from PR and HMM, and the input of all the authors. LP, SD and GWA performed all aspects of the tissue culture experiments, and analysed these data; AMS and HRB performed the pathology experiments; the glutathione measurements were performed with and supervised by SP and SJH; the calcium imaging experiments were performed with and supervised by RA; the scratch assays were performed with and supervised by GL; HMM also generated and provided the *Cln3* deficient mice. The manuscript was written by JDC, BPW, LP and SD with input from all the authors, who approved the final version of the manuscript.

Ethics approval and consent to participate

All applicable international, national, and/or institutional guidelines for the care and use of animals were followed. Specifically, all animal procedures were performed in accordance with the UK Scientific Procedures (Animals) Act of 1996, under the UK Home Office Project License number 70/7364. The studies involving human autopsy material were in accordance with the ethical standards of the Institute of Psychiatry Ethical Research Committee (approval numbers 223/00, 181/02), and with the 1964 Helsinki declaration and its later amendments or comparable ethical standards.

Competing interests

The authors declare that they have no competing interests.

Publisher's Note

Springer Nature remains neutral with regard to jurisdictional claims in published maps and institutional affiliations.

Author details

¹Department of Basic and Clinical Neuroscience, King's College London, Institute of Psychiatry, Psychology & Neuroscience, Maurice Wohl Clinical Neuroscience Institute, 5 Cutcombe Road, London SE5 9RX, UK. ²Department of Molecular Neuroscience, Institute of Neurology, University College London, Queen's Square, London WC1N, 3BG, UK. ³Department of Life, Health and Chemical Sciences, The Open University, Walton Hall, Milton Keynes MK7 6AA, UK. ⁴Wolfson Centre for Age-Related Diseases, King's College London, London SE1 1UL, UK. ⁵Genetics and Genomic Medicine UCL Great Ormond Street Institute of Child Health, University College London, 30 Guilford Street, London WC1N 1EH, UK. ⁶Department of Pediatrics, Harbor-UCLA Medical Center, Los Angeles Biomedical Research Institute and David Geffen School of Medicine UCLA, 1124 West Carson Street, Hanley Hardison Building, Torrance, CA 90502, USA.

Received: 19 September 2017 Accepted: 23 September 2017
Published online: 17 October 2017

References

- Allan SM, Rothwell NJ (2003) Inflammation in central nervous system injury. *Philos Trans R Soc Lond Ser B Biol Sci* 358:1669–1677
- Anderson GW, Goebel HH, Simonati A (2013) Human pathology in NCL. *Biochim Biophys Acta* 1832:1807–1826
- Anzai Y, Hayashi M, Fueki N, Kurata K, Ohya T (2006) Protracted juvenile neuronal ceroid lipofuscinosis—an autopsy report and immunohistochemical analysis. *Brain and Development* 28:462–465
- Autti T, Raininko R, Santavuori P, Vanhanen SL, Poutanen VP, Haltia M (1997) MRI of neuronal ceroid lipofuscinosis. II. Postmortem MRI and histopathological study of the brain in 16 cases of neuronal ceroid lipofuscinosis of juvenile or late infantile type. *Neuroradiology* 39:371–377
- Benarroch EE (2013) Microglia: Multiple roles in surveillance, circuit shaping, and response to injury. *Neurology* 81:1079–1088
- Benedict JW, Sommers CA, Pearce DA (2007) Progressive oxidative damage in the central nervous system of a murine model for juvenile Batten disease. *J Neurosci Res* 85:2882–2891
- Bethea JR, Nagashima H, Acosta MC, Briceno C, Gomez F, Marcillo AE, Looor K, Green J, Dietrich WD (1999) Systemically administered interleukin-10 reduces tumor necrosis factor- α production and significantly improves functional recovery following traumatic spinal cord injury in rats. *J Neurotrauma* 16:851–863
- Bible E, Gupta P, Hofmann SL, Cooper JD (2004) Regional and cellular neuropathology in the palmitoyl protein thioesterase-1 null mutant mouse model of infantile neuronal ceroid lipofuscinosis. *Neurobiol Dis* 16:346–359
- Bithell A, Finch SE, Hornby MF, Williams BP (2008) FGF2 maintains the neurogenic capacity of embryonic neural progenitor cells in vitro but changes their neuronal sub-type specification. *Stem Cells* 26:1565–1574
- Björkblom B, Ostman N, Hongisto V, Komarovski V, Filén JJ, Nyman TA, Kallunki T, Courtney MJ, Coffey ET (2005) Constitutively active cytoplasmic c-Jun N-terminal kinase 1 is a dominant regulator of dendritic architecture: role of microtubule-associated protein 2 as an effector. *J Neurosci* 25:6350–6361
- Björkblom B, Padzik A, Mohammad H, Westerlund N, Komulainen E, Hollós P, Parviainen L, Papageorgiou AC, Iljin K, Kallioniemi O, Kallajoki M, Courtney MJ, Mågård M, James P, Coffey ET (2012) c-Jun N-terminal kinase phosphorylation of MARCKSL1 determines actin stability and migration in neurons and in cancer cells. *Mol Cell Biol* 32:3513–3526
- Bolaños JP, Peuchen S, Heales SJ, Land JM, Clark JB (1994) Nitric oxide-mediated inhibition of the mitochondrial respiratory chain in cultured astrocytes. *J Neurochem* 63:910–916
- Bond M, Holthaus SM, Tammen I, Tear G, Russell C (2013) Use of model organisms for the study of neuronal ceroid lipofuscinosis. *Biochim Biophys Acta* 1832:1842–1865
- Brown GC, Bolaños JP, Heales SJ, Clark JB (1995) Nitric oxide produced by activated astrocytes rapidly and reversibly inhibits cellular respiration. *Neurosci Lett* 193:201–204
- Bruno V, Copani A, Besong G, Scoto G, Nicoletti F (2000) Neuroprotective activity of chemokines against N-methyl-D-aspartate or beta-amyloid-induced toxicity in culture. *Eur J Pharmacol* 399:117–121
- Burkovskaya M, Karpuk N, Xiong J, Bosch M, Boska MD, Takeuchi H, Suzumura A, Kielian T (2014) Evidence for aberrant astrocyte hemichannel activity in Juvenile Neuronal Ceroid Lipofuscinosis (JNCL). *PLoS One* 9(4):e95023
- Cayre M, Canoll P, Goldman JE (2009) Cell migration in the normal and pathological postnatal mammalian brain. *Prog Neurobiol* 88:41–63
- Chang M, Cooper JD, Sleat DE, Cheng SH, Dodge JC, Passini MA, Lobel P, Davidson BL (2008) Intraventricular enzyme replacement improves disease phenotypes in a mouse model of late infantile neuronal ceroid lipofuscinosis. *Mol Ther* 16:649–656
- Chao CC, Hu S, Ehrlich L, Peterson PK (1995) Interleukin-1 and tumor necrosis factor- α synergistically mediate neurotoxicity: involvement of nitric oxide and of N-methyl-D-aspartate receptors. *Brain Behav Immun* 9:355–365
- Chattopadhyay S, Ito M, Cooper JD, Brooks AI, Curran TM, Powers JM, Pearce DA (2002) An autoantibody inhibitory to glutamic acid decarboxylase in the neurodegenerative disorder Batten disease. *Hum Mol Genet* 11:1421–1431
- Chen G, Li H-M, Chen Y-R, Gu X-S, Duan S (2007) Decreased estradiol release from astrocytes contributes to the neurodegeneration in a mouse model of Niemann-Pick disease type C. *Glia* 55:1509–1518
- Chow JC, Young DW, Golenbock DT, Christ WJ, Gusovsky F (1999) Toll-like receptor-4 mediates lipopolysaccharide-induced signal transduction. *J Biol Chem* 274:10689–10692
- Cooper JD (2010) The neuronal ceroid lipofuscinoses: the same, but different? *Biochem Soc Trans* 38:1448–1452
- Cooper JD, Russell C, Mitchison HM (2006) Progress towards understanding disease mechanisms in small vertebrate models of neuronal ceroid lipofuscinosis. *Biochim Biophys Acta* 1762:873–889
- Cooper JD, Tarczyk MA, Nelvagal HR (2015) Towards a new understanding of NCL pathogenesis. *Biochim Biophys Acta* 1852:2256–2261
- Cortés-Vieyra R, Bravo-Patiño A, Valdez-Alarcón JJ, Cajero Juárez M, Finlay BB, Baizabal-Aguirre VM (2012) Role of glycogen synthase kinase-3 beta in the inflammatory response caused by bacterial pathogens. *J Inflamm (Lond)* 9:23
- Cotrina ML, Lin JH-C, Nedergaard M (1998) Cytoskeletal Assembly and ATP Release Regulate Astrocytic Calcium Signaling. *J Neurosci* 18:8794–8804
- Di Malta C, Fryer JD, Settembre C, Ballabio A (2012a) Astrocyte dysfunction triggers neurodegeneration in a lysosomal storage disorder. *Proc Natl Acad Sci U S A* 109:E2334–E2342
- Di Malta C, Fryer JD, Settembre C, Ballabio A (2012b) Autophagy in astrocytes: A novel culprit in lysosomal storage disorders. *Autophagy* 8:1871–1872
- Dietrich WD, Busto R, Bethea JR (1999) Postischemic hypothermia and IL-10 treatment provide long-lasting neuroprotection of CA1 hippocampus following transient global ischemia in rats. *Exp Neurol* 158:444–450
- Dringen R (2000) Metabolism and functions of glutathione in brain. *Prog Neurobiol* 62:649–671
- Finn R, Kovács AD, Pearce DA (2011) Altered sensitivity of cerebellar granule cells to glutamate receptor overactivation in the *Cln3*(Δ ex7/8)-knock-in mouse model of juvenile neuronal ceroid lipofuscinosis. *Neurochem Int* 58:648–655
- Gegg ME, Clark JB, Heales SJR (2005) Co-culture of neurones with glutathione deficient astrocytes leads to increased neuronal susceptibility to nitric oxide and increased glutamate-cysteine ligase activity. *Brain Res* 1036:1–6
- Getty AL, Benedict JW, Pearce DA (2011) A Novel interaction of CLN3 with nonmuscle myosin-IIb and defects in cell motility of *Cln3*^{-/-} cells. *Exp Cell Res* 317:51–69
- Giulian D, Ingeman JE (1988) Colony-stimulating factors as promoters of amoeboid microglia. *J Neurosci* 8:4707–4717
- Hachiya Y, Hayashi M, Kumada S, Uchiyama A, Tsuchiya K, Kurata K (2006) Mechanisms of neurodegeneration in neuronal ceroid-lipofuscinoses. *Acta Neuropathol* 111:168–177
- Haltia M, Herva R, Suopanki J, Baumann M, Tyynälä J (2001) Hippocampal lesions in the neuronal ceroid lipofuscinoses. *Eur J Paediatr Neurol* 5 (Suppl A):209–211
- Hamby ME, Coppola G, Ao Y, Geschwind DH, Khakh BS, Sofroniew MV (2012) Inflammatory mediators alter the astrocyte transcriptome and calcium signaling elicited by multiple G-protein-coupled receptors. *J Neurosci* 32:14489–14510
- Horvath CM (2004) The Jak-STAT pathway stimulated by interferon gamma. *Sci STKE* 2004(260):tr8
- Kielar C, Maddox L, Bible E, Pontikis CC, Macauley SL, Griffey MA, Wong M, Sands MS, Cooper JD (2007) Successive neuron loss in the thalamus and cortex in a mouse model of infantile neuronal ceroid lipofuscinosis. *Neurobiol Dis* 25:150–162
- Kovács AD, Pearce DA (2008) Attenuation of AMPA receptor activity improves motor skills in a mouse model of juvenile Batten disease. *Exp Neurol* 209:288–291
- Kovács AD, Saje A, Wong A, Szénási G, Kiricsi P, Szabó E, Cooper JD, Pearce DA (2011) Temporary inhibition of AMPA receptors induces a prolonged improvement of motor performance in a mouse model of juvenile Batten disease. *Neuropharmacology* 60:405–409
- Kovács AD, Weimer JM, Pearce DA (2006) Selectively increased sensitivity of cerebellar granule cells to AMPA receptor-mediated excitotoxicity in a mouse model of Batten disease. *Neurobiol Dis* 22:575–585
- Kovács AD, Saje A, Wong A, Ramji S, Cooper JD, Pearce DA (2012) Age-dependent therapeutic effect of memantine in a mouse model of juvenile Batten disease. *Neuropharmacology* 63:769–775
- Kreft M, Potokar M, Stenovec M, Pangrsic T, Zorec R (2009) Regulated exocytosis and vesicle trafficking in astrocytes. *Ann N Y Acad Sci* 1152:30–42
- Kuga N, Sasaki T, Takahara Y, Matsuki N, Ikegaya Y (2011) Large-scale calcium waves traveling through astrocytic networks in vivo. *J Neurosci* 31:2607–2614

47. Kuronen M, Lehesjoki A-E, Jalanko A, Cooper JD, Kopra O (2012) Selective spatiotemporal patterns of glial activation and neuron loss in the sensory thalamocortical pathways of neuronal ceroid lipofuscinosis 8 mice. *Neurobiol Dis* 47:444–457
48. Lau CL, O'Shea RD, Broberg BV, Bischof L, Beart PM (2011) The Rho kinase inhibitor Fasudil up-regulates astrocytic glutamate transport subsequent to actin remodelling in murine cultured astrocytes. *Br J of Pharmacol* 163: 533–545
49. Liddeelow SA, Guttenplan KA, Clarke LE, Bennett FC, Bohlen CJ, Schirmer L, Bennett ML, Münch AE, Chung W-S, Peterson TC, Wilton DK, Frouin A, Napier BA, Panicker N, Kumar M, Buckwalter MS, Rowitch DH, Dawson VL, Dawson TM, Stevens B, Barres BA (2017) Neurotoxic reactive astrocytes are induced by activated microglia. *Nature* 541:481–487
50. Lim MJ, Alexander N, Benedict JW, Chattopadhyay S, Shemilt SJ, Guérin CJ, Cooper JD, Pearce DA (2007) IgG entry and deposition are components of the neuroimmune response in Batten disease. *Neurobiol Dis* 25:239–251
51. Lucas S-M, Rothwell NJ, Gibson RM (2006) The role of inflammation in CNS injury and disease. *Br J Pharmacol* 147(Suppl 1):S232–S240
52. McCarthy KD, de Vellis J (1980) Preparation of separate astroglial and oligodendroglial cell cultures from rat cerebral tissue. *J Cell Biol* 85:890–902
53. McMillian M, Thai L, Hong JS, O'Callaghan JP, Pennypacker KR (1994) Brain injury in a dish: a model for reactive gliosis. *Trends in Neuroscience* 17:138–142
54. Macauley SL, Roberts MS, Wong AMS, McSloy F, Reddy AS, Cooper JD, Sands MS (2012) Synergistic effects of CNS-directed gene therapy and bone marrow transplantation in the murine model of infantile neuronal ceroid lipofuscinosis. *Ann Neurol* 71:797–804
55. Mangano EN, Peters S, Litteljohn D, So R, Bethune C, Boby J, Clarke M, Hayley S (2011) Granulocyte macrophage-colony stimulating factor protects against substantia nigra dopaminergic cell loss in an environmental toxin model of Parkinson's disease. *Neurobiol Dis* 43:99–112
56. Mitchison HM, Bernard DJ, Greene ND, Cooper JD, Junaid MA, Pullarkat RK, de Vos N, Breuning MH, Owens JW, Mobley WC, Gardiner RM, Lake BD, Taschner PE, Nussbaum RL (1999) Targeted disruption of the *Cln3* gene provides a mouse model for Batten disease. The Batten Mouse Model Consortium [corrected]. *Neurobiol Dis* 6:321–334
57. Moidunny S, Dias RB, Wesseling E, Sekino Y, Boddeke HWGM, Sebastião AM, Biber K (2010) Interleukin-6-type cytokines in neuroprotection and neuromodulation: oncostatin M, but not leukemia inhibitory factor, requires neuronal adenosine A1 receptor function. *J Neurochem* 114:1667–1677
58. Mole SE, Williams R, Goebel H (2011) The Neuronal Ceroid Lipofuscinoses (Batten Disease). Oxford Univ Press, Oxford
59. Morgan JP, Magee H, Wong A, Nelson T, Koch B, Cooper JD, Weimer JM (2013) A murine model of variant late infantile ceroid lipofuscinosis recapitulates behavioral and pathological phenotypes of human disease. *PLoS One* 8:e78694
60. Nobile M, Monaldi I, Alloisio S, Cugnoli C, Ferroni S (2003) ATP-induced, sustained calcium signalling in cultured rat cortical astrocytes: evidence for a non-capacitative, P2X7-like-mediated calcium entry. *FEBS Lett* 538:71–76
61. Oswald MJ, Palmer DN, Kay GW, Shemilt SJA, Rezaie P, Cooper JD (2005) Glial activation spreads from specific cerebral foci and precedes neurodegeneration in presymptomatic ovine neuronal ceroid lipofuscinosis (CLN6). *Neurobiol Dis* 20:49–63
62. Oudin MJ, Gajendra S, Williams G, Hobbs C, Lalli G, Doherty P (2011) Endocannabinoids regulate the migration of subventricular zone-derived neuroblasts in the postnatal brain. *J Neurosci* 31:4000–4011
63. Palmer DN, Barry LA, Tyynelä J, Cooper JD (2013) NCL disease mechanisms. *Biochim Biophys Acta* 1832:1882–1893
64. Partanen S, Haapanen A, Kielar C, Pontikis C, Alexander N, Inkinen T, Saftig P, Gillingwater TH, Cooper JD, Tyynelä J (2008) Synaptic changes in the thalamocortical system of cathepsin D deficient mice, a model of human congenital neuronal ceroid-lipofuscinosis. *J Neuropathol Exp Neurol* 67:16–29
65. Pears MR, Cooper JD, Mitchison HM, Mortishire-Smith RJ, Pearce DA, Griffin JL (2005) High resolution 1H NMR-based metabolomics indicates a neurotransmitter cycling deficit in cerebral tissue from a mouse model of Batten disease. *J Biol Chem* 280:42508–42514
66. Pekny M, Pekna M, Messing A, Steinhäuser C, Lee JM, Parpura V, Hol EM, Sofroniew MV, Verkhratsky A (2016) Astrocytes: a central element in neurological diseases. *Acta Neuropathol* 131(3):323–345
67. Pinto DJ, Patrick SL, Huang WC, Connors BW (2005) Initiation, propagation, and termination of epileptiform activity in rodent neocortex in vitro involve distinct mechanisms. *J Neurosci* 25:8131–8140
68. Pontikis CC, Cella CV, Parihar N, Lim MJ, Chakrabarti S, Mitchison HM, Mobley WC, Rezaie P, Pearce DA, Cooper JD (2004) Late onset neurodegeneration in the *Cln3*^{-/-} mouse model of juvenile neuronal ceroid lipofuscinosis is preceded by low level glial activation. *Brain Res* 1023:231–242
69. Pontikis CC, Cotman SL, MacDonald ME, Cooper JD (2005) Thalamocortical neuron loss and localized astrocytosis in the *Cln3Deltaex7/8* knock-in mouse model of Batten disease. *Neurobiol Dis* 20:823–836
70. Potokar M, Kreft M, Li L, Daniel Andersson J, Pangrsic T, Chowdhury HH, Pekny M, Zorec R (2007) Cytoskeleton and vesicle mobility in astrocytes. *Traffic* 8:12–20
71. Pressey SN, Smith DA, Wong AMS, Platt FM, Cooper JD (2012) Early glial activation, synaptic changes and axonal pathology in the thalamocortical system of Niemann-Pick type C1 mice. *Neurobiol Dis* 45:1086–1100
72. Ransohoff RM (2009) Chemokines and chemokine receptors: standing at the crossroads of immunobiology and neurobiology. *Immunity* 31:711–721
73. Ransohoff RM, Brown MA (2012) Innate immunity in the central nervous system. *J Clin Invest* 122:1164–1171
74. Rossi F, Bianchini E (1996) Synergistic induction of nitric oxide by beta-amyloid and cytokines in astrocytes. *Biochem Biophys Res Commun* 225: 474–478
75. Rossi D, Volterra A (2009) Astrocytic dysfunction: insights on the role in neurodegeneration. *Brain Res Bull* 80:224–232
76. Schäbitz WR, Krüger C, Pitzer C, Weber D, Laage R, Gassler N, Aronowski J, Mier W, Kirsch F, Dittgen T, Bach A, Sommer C, Schneider A (2008) A neuroprotective function for the hematopoietic protein granulocyte-macrophage colony stimulating factor (GM-CSF). *J Cereb Blood Flow Metab* 28:29–43
77. Schmiecht M-L, Blom T, Blom T, Kopra O, Wong A, Schantz-Fant von C, Ikonen E, Kuronen M, Jauhiainen M, Cooper JD, Jalanko A (2012) *Cln5*-deficiency in mice leads to microglial activation, defective myelination and changes in lipid metabolism. *Neurobiol Dis* 46:19–29
78. Schulz JB, Lindenau J, Seyfried J, Dichgans J (2000) Glutathione, oxidative stress and neurodegeneration. *Eur J Biochem* 267:4904–4911
79. Schulz A, Kohlschütter A, Mink J, Simonati A, Williams R (2013) NCL diseases - clinical perspectives. *Biochim Biophys Acta* 1832:1801–1806
80. Seehafer SS, Ramirez-Montealegre D, Wong AM, Chan C-H, Castaneda J, Horak M, Ahmadi SM, Lim MJ, Cooper JD, Pearce DA (2011) Immunosuppression alters disease severity in juvenile Batten disease mice. *J Neuroimmunol* 230:169–172
81. Semple BD, Kossman T, Morganti-Kossmann MC (2010) Role of chemokines in CNS health and pathology: a focus on the CCL2/CCR2 and CXCL8/CXCR2 networks. *J Cereb Blood Flow Metab* 30:459–473
82. Shacka JJ (2012) Mouse models of neuronal ceroid lipofuscinoses: useful pre-clinical tools to delineate disease pathophysiology and validate therapeutics. *Brain Res Bull* 88:43–57
83. Singh S, Swarnkar S, Goswami P, Nath C (2011) Astrocytes and microglia: responses to neuropathological conditions. *Int J Neurosci* 121:589–597
84. Sleat DE, Wiseman JA, El-Banna M, Kim K-H, Mao Q, Price S, Macauley SL, Sidman RL, Shen MM, Zhao Q, Passini MA, Davidson BL, Stewart GR, Lobel P (2004) A mouse model of classical late-infantile neuronal ceroid lipofuscinosis based on targeted disruption of the *CLN2* gene results in a loss of tripeptidyl-peptidase I activity and progressive neurodegeneration. *J Neurosci* 24:9117–9126
85. Sofroniew MV, Vinters HV (2010) Astrocytes: biology and pathology. *Acta Neuropathol* 119:7–35
86. Stewart VC, Stone R, Gegg ME, Sharpe MA, Hurst RD, Clark JB, Heales SJ (2002) Preservation of extracellular glutathione by an astrocyte derived factor with properties comparable to extracellular superoxide dismutase. *J Neurochem* 83:984–991
87. Suzumura A, Sawada M, Yamamoto H, Marunouchi T (1990) Effects of colony stimulating factors on isolated microglia in vitro. *J Neuroimmunol* 30:111–120
88. Trevelyan AJ, Sussillo D, Watson BO, Yuste R (2006) Modular propagation of epileptiform activity: evidence for an inhibitory veto in neocortex. *J Neurosci* 26:12447–12455
89. Tuxworth RI, Chen H, Vivancos V, Carvajal N, Huang X, Tear G (2011) The Batten disease gene *CLN3* is required for the response to oxidative stress. *Hum Mol Genet* 20:2037–2047
90. Tyynelä J, Cooper JD, Khan MN, Shemilt SJA, Haltia M (2004) Hippocampal pathology in the human neuronal ceroid-lipofuscinoses: distinct patterns of storage deposition, neurodegeneration and glial activation. *Brain Pathol* 14:349–357

91. Verity C, Winstone AM, Stellitano L, Will R, Nicoll A (2010) The epidemiology of progressive intellectual and neurological deterioration in childhood. *Arch Dis Child* 95:361–364
92. Verkhratsky A (2010) Physiology of neuronal-glia networking. *Neurochem Int* 57:332–343
93. von Schantz C, Kielar C, Hansen SN, Pontikis CC, Alexander NA, Kopra O, Jalanko A, Cooper JD (2009) Progressive thalamocortical neuron loss in *Cln5* deficient mice: distinct effects in Finnish variant late infantile NCL. *Neurobiol Dis* 34:308–319
94. Wang D, Baldwin AS (1998) Activation of nuclear factor-kappaB-dependent transcription by tumor necrosis factor-alpha is mediated through phosphorylation of RelA/p65 on serine 529. *J Biol Chem* 273:29411–29416
95. Wang XQ, Peng YP, Lu JH, Cao BB, Qiu YH (2009) Neuroprotection of interleukin-6 against NMDA attack and its signal transduction by JAK and MAPK. *Neurosci Lett*, 450:122–126
96. Warriar V, Vieira M, Mole SE (2013) Genetic basis and phenotypic correlations of the neuronal ceroid lipofusinoses. *Biochim Biophys Acta* 1832:1827–1830
97. Williams BP, Price J (1995) Evidence for multiple precursor cell types in the developing rat cerebral cortex. *Neuron* 14:1181–1188
98. Witting A, Möller T (2011) Microglia cell culture: a primer for the novice. *Methods Mol Biol* 758:49–66
99. Xiong J, Kielian T (2013) Microglia in juvenile neuronal ceroid lipofuscinosis are primed toward a pro-inflammatory phenotype. *J Neurochem* 127:245–258
100. Zambrano A, Otth C, Mujica L, Concha II, Maccioni RB (2007) Interleukin-3 prevents neuronal death induced by amyloid peptide. *BMC Neurosci* 8:82
101. Zambrano A, Otth C, Maccioni RB, Concha II (2010) IL-3 controls tau modifications and protects cortical neurons from neurodegeneration. *Curr Alzheimer Res* 7:615–624
102. Zhang M, Strnatka D, Donohue C, Hallows JL, Vincent I, Erickson RP (2008) Astrocyte-only *Npc1* reduces neuronal cholesterol and triples life span of *Npc1*^{-/-} mice. *J Neurosci Res* 86:2848–2856
103. Zorec R, Araque A, Carmignoto G, Haydon PG, Verkhratsky A, Parpura V (2012) Astroglial excitability and gliotransmission: an appraisal of Ca^{2+} as a signalling route. *ASN Neuro* 4:103–119

Submit your next manuscript to BioMed Central and we will help you at every step:

- We accept pre-submission inquiries
- Our selector tool helps you to find the most relevant journal
- We provide round the clock customer support
- Convenient online submission
- Thorough peer review
- Inclusion in PubMed and all major indexing services
- Maximum visibility for your research

Submit your manuscript at
www.biomedcentral.com/submit

