



## King's Research Portal

DOI:

[10.1017/S0033291717002689](https://doi.org/10.1017/S0033291717002689)

*Document Version*

Peer reviewed version

[Link to publication record in King's Research Portal](#)

*Citation for published version (APA):*

Gaughran, F., Lally, J., Beck, K., McCormack, R., Gardner-Sood, P., Coutinho, E., Jacobson, L., Lang, B., Sainz-Fuertes, R., Papanastasiou, E., Di Forti, M., Nicholson, T., Vincent, A., & Murray, R. M. (2017). Brain-relevant antibodies in first-episode psychosis: a matched case-control study. *Psychological Medicine*, 1-9. Advance online publication. <https://doi.org/10.1017/S0033291717002689>

### **Citing this paper**

Please note that where the full-text provided on King's Research Portal is the Author Accepted Manuscript or Post-Print version this may differ from the final Published version. If citing, it is advised that you check and use the publisher's definitive version for pagination, volume/issue, and date of publication details. And where the final published version is provided on the Research Portal, if citing you are again advised to check the publisher's website for any subsequent corrections.

### **General rights**

Copyright and moral rights for the publications made accessible in the Research Portal are retained by the authors and/or other copyright owners and it is a condition of accessing publications that users recognize and abide by the legal requirements associated with these rights.

- Users may download and print one copy of any publication from the Research Portal for the purpose of private study or research.
- You may not further distribute the material or use it for any profit-making activity or commercial gain
- You may freely distribute the URL identifying the publication in the Research Portal

### **Take down policy**

If you believe that this document breaches copyright please contact [librarypure@kcl.ac.uk](mailto:librarypure@kcl.ac.uk) providing details, and we will remove access to the work immediately and investigate your claim.

# Psychological Medicine

## Brain-relevant antibodies in First Episode Psychosis: A matched case-control study --Manuscript Draft--

<b>Manuscript Number:</b>	PSM-D-16-01266R3
<b>Full Title:</b>	Brain-relevant antibodies in First Episode Psychosis: A matched case-control study
<b>Article Type:</b>	Original Article
<b>Corresponding Author:</b>	John Lally*, MB MSc MRCPsych Institute of Psychiatry, Psychology & Neuroscience (IoPPN), King's College London, London, United Kingdom London, UNITED KINGDOM
<b>Corresponding Author Secondary Information:</b>	
<b>Corresponding Author's Institution:</b>	Institute of Psychiatry, Psychology & Neuroscience (IoPPN), King's College London, London, United Kingdom
<b>Corresponding Author's Secondary Institution:</b>	
<b>First Author:</b>	Fiona Gaughran*, MD, FRCPI, FRCP, FRCPsych,
<b>First Author Secondary Information:</b>	
<b>Order of Authors:</b>	Fiona Gaughran*, MD, FRCPI, FRCP, FRCPsych, John Lally*, MB MSc MRCPsych Katherine Beck, BA BM BCh MRCPsych Ruaidhri McCormack Poonam Gardner-Sood, PhD, MSc, BA (Hons) Ester Coutinho, MD Leslie Jacobson, DPhil Bethan Lang, PhD Ricardo Sáinz-Fuertes, LMS MSc MRCPsych PhD Evangelos Papanastasiou, MD MSc Marta Di Forti, MD PhD Timothy Nicholson, MBBS, MSc, PhD, MRCPsych, MRCP Angela Vincent**, MBBS FRCPATH FMedSci FRS Robin M Murray**, MD DSc FRCP FRCPsych FMedSci FRS
<b>Order of Authors Secondary Information:</b>	
<b>Manuscript Region of Origin:</b>	UNITED KINGDOM
<b>Abstract:</b>	<p>There has been much recent excitement about the possibility that some cases of psychosis may be wholly due to brain-reactive antibodies, with antibodies to N-Methyl-D-Aspartate receptor(NMDAR) and the voltage gated potassium channel(VGKC)-complex reported in a few patients with first episode psychosis(FEP).</p> <p><b>Methods</b> Participants were recruited from psychiatric services in South London,UK, from 2009-2011 as part of the Genetics and Psychosis(GAP)study. We conducted a case control study to examine NMDAR and VGKC-complex antibody levels and rates of antibody positivity in 96 patients presenting with FEP and 98 controls matched for age and sex. LGI1 and CASPR antibodies were also measured. Notably,patients with suspicion of organic disease were excluded.</p> <p><b>Results</b></p>

VGKC-complex antibodies were found in both cases(n=3) and controls(n=2). NMDAR antibody positivity was seen in one case and one control. Either LGI1-Abs or CASPR2-Abs were found in three cases and three controls. Neuronal antibody staining, consistent with the above results or indicating potential novel antigens, was overall positive in four patients but also in six controls. Overall, antibody positivity was at low levels only and not higher in cases than in controls.

#### Conclusions

This case-control study of the prevalence of antibodies in FEP does not provide evidence to support the hypothesis that FEP is associated with an immune-mediated process in a subgroup of patients. Nevertheless, as other bio-clinical factors may influence the effect of such antibodies in a given individual, and patients with organic neurological disease may be misdiagnosed as FEP, the field requires more research to put these findings in context.

**Title:**

Brain-relevant antibodies in First Episode Psychosis: A matched case-control study

**Authors**

Fiona Gaughran\*, John Lally\*, Katherine Beck, Ruaidhri McCormack, Poonam Gardner-Sood, Ester Coutinho, Leslie Jacobson, Bethan Lang, Ricardo Sainz-Fuertes, Evangelos Papanastasiou, Marta Di Forti, Tim Nicholson, Angela Vincent\*\*, Robin M. Murray\*\*

\*these authors contributed equally to the paper and should be acknowledged as joint first authors

\*Dr Fiona Gaughran MD, FRCPI, FRCP, FRCPsych,

Lead Consultant Psychiatrist, National Psychosis Service, South London and Maudsley NHS

Foundation Trust; Reader in Psychopharmacology and Physical Health, Institute of Psychiatry, Psychology and Neuroscience, Kings College, London, UK; The Collaboration for Leadership in Applied Health Research and Care (CLAHRC), South London Psychosis Research Team, UK

\*Dr John Lally MB MSc MRCPsych,

Department of Psychosis Studies, Institute of Psychiatry, Psychology and Neuroscience, King's College London, London, UK; Department of Psychiatry, Royal College of Surgeons in Ireland, Beaumont Hospital, Ireland ; Department of Psychiatry, School of Medicine and Medical Sciences, University College Dublin, and St Vincent's University Hospital, Dublin, Ireland

Dr Katherine Beck BA BM BCh MRCPsych

Clinical Research Worker, Department of Psychosis Studies, Institute of Psychiatry, Psychology and Neuroscience, King's College London, UK

Dr Ruaidhri McCormack, BA MB BCh BAO MRCP MRCPsych

Locum Consultant in Liaison Psychiatry, Addenbrooke's Hospital, Cambridge, UK

Dr Poonam-Gardner Sood, PhD, MSc, BA (Hons) Department of Psychosis Studies, Institute of Psychiatry, Psychology and Neuroscience, King's College London, London, UK

Dr Ester Coutinho, MD

Nuffield Department of Clinical Neurosciences, Oxford University Hospitals, University of Oxford,  
UK

Dr Leslie Jacobson, DPhil

Nuffield Department of Clinical Neurosciences, Oxford University Hospitals, University of Oxford,  
UK

Dr Bethan Lang, PhD

Nuffield Department of Clinical Neurosciences, Oxford University Hospitals, University of Oxford,  
UK

Dr Ricardo Sáinz-Fuertes, LMS MSc MRCPsych PhD

Visiting Lecturer in Basic and Clinical Neuroscience at the Institute of Psychiatry, Psychology, &  
Neuroscience, King's College London, UK

Dr Evangelos Papanastasiou, MD MSc

Cognition Schizophrenia and Imaging Laboratory (CSI Lab), Department of Psychosis Studies,  
Institute of Psychiatry Psychology and Neuroscience, King's College London, UK

Dr Marta Di Forti, MD PhD,

MRC Clinical Scientist, SGDP, Institute of Psychiatry, Psychology and Neuroscience, King's College  
London, and South London and Maudsley NHS Foundation Trust, London, UK

Dr Tim Nicholson, MBBS, MSc, PhD, MRCPsych, MRCP

NIHR Clinician Scientist, Section of Cognitive Neuropsychiatry, Department of Psychosis Studies,  
Institute of Psychiatry, Psychology and Neuroscience, King's College London, London, UK

**\*\*Prof Angela Vincent, MBBS FRCPath FMedSci FRS**

Emeritus Professor of Neuroimmunology, Nuffield Department of Clinical Neurosciences, University of Oxford, John Radcliffe Hospital, Oxford, UK

**\*\*Prof Sir Robin M Murray, MD DSc FRCP FRCPsych FMedSci FRS,**

Professor of Psychiatric Research, Institute of Psychiatry, Psychology and Neuroscience, King's College London and Honorary Consultant, National Psychosis Service, South London and Maudsley NHS Foundation Trust, London, UK

Corresponding author: Dr John Lally

**Email:**[john.lally@kcl.ac.uk](mailto:john.lally@kcl.ac.uk)

**Postal address:** PO63, Department of Psychosis Studies

Institute of Psychiatry, Psychology and Neuroscience,

King's College London ,

De Crespigny Park,

London SE5 8AF

**Tel:** 0044 2032284418

## **Disclosure**

FG has received honoraria for advisory work and lectures from Roche, BMS, Lundbeck, Otsuka and Sunovion, is a collaborator on a NHS Innovations project co-funded by Janssen and has a family member with professional links to Lilly and GSK, including stock

RSF is now an employee of Otsuka Pharmaceuticals.

EP is an employee of Mundipharma Research Limited, Cambridge, UK

RMM has received payment for lectures including service on speakers' bureaus for BMS, Janssen, AZ.

AV and the University of Oxford hold patents and receive royalties for antibody tests including LGI1 and CASPR2.

The other authors, JL, KB, RM, PGS, EC, LJ, BL, MF and TN have no conflict of interest to declare.

NIHR Attribution/ Disclaimer. This paper summarises independent research funded by the National Institute for Health Research (NIHR) under its Biomedical Research centre, South London and Maudsley NHS Foundation Trust and the Institute of Psychiatry, Psychology and Neuroscience and by the IMPACT Programme (Grant Reference Number RP-PG-0606-1049). FG receives funding from the National Institute for Health Research Collaboration for Leadership in Applied Health Research and Care Funding scheme. The views expressed in this publication are those of the author(s) and not necessarily those of the NHS, the National Institute for Health Research or the Department of Health.

**Abstract word count:** 250

**Manuscript Word count:** 3336

Tables: 2

Figures: 0

Supplementary material: 2

## **Abstract**

### **Background**

There has been much recent excitement about the possibility that some cases of psychosis may be wholly due to brain-reactive antibodies, with antibodies to N-Methyl-D-Aspartate receptor (NMDAR) and the voltage gated potassium channel (VGKC)-complex reported in a few patients with first episode psychosis (FEP).

### **Methods**

Participants were recruited from psychiatric services in South London, UK, from 2009-2011 as part of the Genetics and Psychosis (GAP) study.

We conducted a case control study to examine NMDAR and VGKC-complex antibody levels and rates of antibody positivity in ninety-six patients presenting with FEP and ninety-eight controls matched for age and sex. LGI1 and CASPR antibodies were also measured. Notably, patients with suspicion of organic disease were excluded.

### **Results**

VGKC-complex antibodies were found in both cases (n=3) and controls (n=2). NMDAR antibody positivity was seen in one case and one control. Either LGI1-Abs or CASPR2-Abs were found in three cases and three controls. Neuronal antibody staining, consistent with the above results or indicating potential novel antigens, was overall positive in four patients but also in six controls. Overall, antibody positivity was at low levels only and not higher in cases than in controls.

### **Conclusions**

This case-control study of the prevalence of antibodies in FEP does not provide evidence to support the hypothesis that FEP is associated with an immune-mediated process in a subgroup of patients. Nevertheless, as other bio-clinical factors may influence the effect of such antibodies in a given individual, and patients with organic neurological disease may be misdiagnosed as FEP, the field requires more research to put these findings in context.

**Keywords:** First episode psychosis; FEP; NMDA; VGKC-complex; schizophrenia; antibodies



**Title:**

Brain-relevant antibodies in First Episode Psychosis: A matched case-control study

**Introduction**

The link between psychosis and autoimmunity has been explored over many decades (Benros *et al.*, 2014, Eaton *et al.*, 2006, Wright *et al.*, 1999), but only in recent years has this been related to the pathophysiology of psychosis at a neurotransmitter level via specific antibodies against antigens which have clearly established links to the aetiology of psychosis. This has resulted in a surge of interest in whether a sub-group of people with psychosis have serum antibodies to certain neuronal antigens, although the specificity, sensitivity and clinical relevance of these remain unclear (Coutinho *et al.*, 2014, Deakin *et al.*, 2014, Pollak *et al.*, 2014). These auto-antibodies target synaptic or extra-synaptic membrane-expressed proteins, with greatest interest in antibodies to the N-Methyl-D-Aspartate receptor (NMDAR) and the voltage gated potassium channel (VGKC)-complex, which includes antigens leucine- rich glioma inactivated-1(LGII) and contactin-associated protein-2 (CASPR2) (Ezeoke *et al.*, 2013, Pearlman and Najjar, 2014, Steiner *et al.*, 2013, Zandi *et al.*, 2011).

Psychotic symptoms are a common feature of the encephalitis syndromes classically associated with such antibodies – often occurring before the development of other features of encephalitis, such as seizures, movement disorders, autonomic instability and impaired consciousness. For example, in the seminal case series describing 100 anti-NMDAR encephalitis cases, the majority (77%) of patients initially presented to psychiatry services with predominantly psychotic symptoms (Dalmau *et al.*, 2008). A subsequent larger case series of 571 patients reported 18 patients (3.2 %) having an ‘isolated’ psychiatric relapse (after an initial ‘full’ encephalitis). Five further patients (0.9 %) had ‘isolated’ psychiatric symptoms, again predominantly psychosis, at presentation – although on retrospective close examination they were found to have had other clinical features and were re-diagnosed as encephalitis (Kayser *et al.*, 2013). The key question is therefore whether isolated psychosis, i.e. schizophrenia, is associated with these antibodies.

A prospective cohort study in first episode psychosis (FEP) identified serum NMDAR antibodies in 6.4% of patients (n=3/47) (Zandi *et al.*, 2011) using a live cell-based assay (CBA) and well-established subjective visual scoring system (Irani *et al.*, 2010b). A recent case-control study in FEP identified an increased prevalence of NMDAR antibodies (n=7/228; 3% of total population) compared to controls (n=0/105), with no difference in the prevalence of LGI1, CASPR2 or VGKC-complex antibodies between the groups (Lennox *et al.*, 2017). Using the same methodology, a recent study by our group found that 7% of patients (n=3/43) with chronic refractory psychosis were positive for NMDAR antibodies (Beck *et al.*, 2015). Methodology, however, appears to be relevant, as 9.9% of patients with acute schizophrenia were reported NMDAR antibody positive using the commercial fixed CBA, with similar rates in controls (Steiner *et al.*, 2013), whereas, other studies have failed to identify any antibody positivity in either FEP (Masdeu *et al.*, 2012) or established schizophrenia (de Witte *et al.*, 2015, Haussleiter *et al.*, 2012, Rhoads *et al.*, 2011). Some of these negative studies also used fixed CBA to measure NMDAR seropositivity, but there have been few direct comparisons between laboratories (Wandinger *et al.*, 2011). A meta-analysis identified no excess of NMDAR antibody (of any subtype (IgG, IgM, IgA)) in psychotic disorders, though IgG antibodies alone were significantly greater in FEP cases (IgG positive in 5/272 of cases) than in controls (IgG positive in 5/1598 of controls) (Pollak *et al.*, 2014).

VGKC-complex antibodies can also cause cell-surface antibody associated CNS disorders (Zuliani *et al.*, 2012). Most of these antibodies bind to LGI-1 or CASPR-2 (Irani *et al.*, 2010a), which are cell surface proteins that form part of the VGKC-complex. The targets of other VGKC-complex antibodies are unclear, although two recent studies suggest that they bind to intracellular epitopes and may be neuroinflammatory biomarkers rather than pathogenic antibodies (Hacohen *et al.*, 2015, Lang *et al.*, 2017).

Many patients with high levels of VGKC-complex antibodies have evidence of limbic encephalitis and some present first with psychosis (Paterson *et al.*, 2014). Phenotypically, LGI1 antibodies tend to associate with limbic encephalitis and faciobrachial dystonic seizures, phenomena which can be misinterpreted as myoclonic jerks (Irani *et al.*, 2011). CASPR2 antibodies, meanwhile, are associated

with neuromyotonia or Morvan's syndrome in which psychiatric features are common, often with a thymoma (Irani *et al.*, 2010a). In a case series, over a third of patients with VGKC-complex antibodies had psychiatric symptoms, including confusion, personality change, memory impairment and depression (Somers *et al.*, 2011). Those affected are classically older than those with NMDAR antibody encephalitis. VGKC-complex antibodies were identified in one patient out of 46 with FEP (Zandi *et al.*, 2011).

The importance of antibodies to NMDAR and VGKC-complex proteins is clear when psychosis presents in the context of encephalitis, but the challenge in psychiatry is to determine their relevance in clinically uncomplicated psychosis. Only one study to date has compared the prevalence of both these, and other neuronal antibodies in adults with FEP compared to matched controls (Lennox *et al.*, 2017).

## **Methods and Materials**

### **Participants**

The study population comprised 96 adults with a FEP and 98 matched controls. The participants were recruited as part of the Genetics and Psychosis (GAP) study. The GAP study is a case-control study investigating the genetic basis of susceptibility to psychosis.

Participants were recruited from both inpatient and outpatient settings through working closely with the clinical teams. Patients were consented as soon after first presentation with psychosis as possible (the mean duration from the time of first contact for psychosis to the time of blood sampling was 52.74 (SD=37.3) days (median 47 days ; range 7-167 days)). Assessments were performed by trained research workers and Operational Criteria Checklists (OPCRIT) diagnoses made by research clinicians.

Participants were aged 18-65 years. Patients were eligible if they had a first episode psychosis and met the ICD-10 criteria for psychosis (ICD-10 codes F20-29 and F30-33) diagnosed utilising the OPCRIT (McGuffin *et al.*, 1991). The baseline diagnoses were made from face-to-face interviews by trained researchers and mental health records according to ICD-10 criteria (WHO, 1992) utilising the OPCRIT

(McGuffin *et al.*, 1991). Participants had made first contact with our health services for psychotic symptoms not more than 12 months previously.

### **Study Design**

Patients were matched for gender and age (plus or minus 5 years) to 98 healthy controls from the same local population, recruited by means of internet and newspaper advertisements, and distribution of leaflets at train stations, shops and job centres. Those who agreed to participate as controls were administered the Psychosis Screening Questionnaire (Bebbington and Nayani, 1995) and excluded if they met criteria for a psychotic disorder or reported a previous diagnosis of psychotic illness.

Exclusion criteria for both controls and cases were an organic psychosis (ICD-10: F06.8 and F9.0), i.e a psychosis deemed likely to be secondary to neurological disorders such as epilepsy, head injury, or to a long term deterioration of intellectual function and memory (dementia) or a short term disturbance of orientation, judgement, or consciousness (delirium). The Schedule for Clinical Assessment in Neuropsychiatry (SCAN) was administered to elucidate psychotic symptoms present in the month before study recruitment, from which those cases meeting criteria for organic psychosis were excluded. These decisions were made in discussion with two experienced psychiatrists. Those with a substance induced psychosis as defined by ICD-10, a diagnosis of intellectual disability, terminal cancer, and pregnancy were also excluded.

All participants provided written informed consent. The project was approved by the Research Ethics Committee of the Joint South London and Maudsley and The Institute of Psychiatry NHS Research Ethics Committee.

### **Specimen Collection**

The samples were transferred to Oxford for testing in two batches during the course of the observational study. The first group consisted of plasma from 30 patients and 30 age and sex matched controls while the second group was serum from 66 patients and 68 controls matched for age and sex.

### **Plasma samples**

Samples were collected in EDTA tubes using a 23 gauge butterfly needle and vacutainer needle holder following standard venepuncture in the cubital region, in the area of anastomosis between the radial and the ulnar veins or in the brachial vein, slightly proximal to this area. To avoid coagulation of the sample, a 9ml K3EDTA tube (Greiner Bio-One, Cat # 455036X - EDTA tube, lavender lid) was used. The sample was immediately kept at +4°C until being processed within two hours. The tube was labelled with the subject barcode with no phenotypic information given and then centrifuged at 3000 rcf (xg), 8 minutes at +4°C; the plasma was aliquoted in 0.5 ml eppendorf tubes and frozen at -80°C within three hours of collection.

Analysis of results for combined plasma and serum samples (n=194), and with serum samples alone are presented (n=134).

### **Antibody testing**

All samples received in Oxford were kept at -20 C until the analyses, blinded to patient-control status, were performed. The antibody assays for NMDAR, LGI1 and CASPR2 were performed using live cell-based assays as established in previous studies (Irani *et al.*, 2010a, Irani *et al.*, 2010b, Zandi *et al.*, 2011) and as used for routine diagnostic testing for the Oxford Neuroimmunology Service. HEK293 cells were transfected with plasmids encoding the human forms of NMDAR (NR1 and NR2B subunits), LGI1 or CASPR2, washed, grown for 24-36 hours and then incubated at room temperature in the plasmas or sera at 1:20 (1:100 for CASPR2 as used routinely for this protein). Binding of antibodies to the transfected antigens on the live cells was detected with Alexa fluor labelled anti-human IgG, and the cells examined under fluorescence microscopy. The binding was compared with known positive and negative controls and scored on a scale from 0 – 4.

Positive results (>0) were repeated and the IgG specificity confirmed with an IgG-specific CBA. This involved replacing anti-human IgG, which can recognise the light chains of IgG, A, M and D, with goat anti-human Fc IgG secondary (Thermo Scientific; 31125; 1:750), followed by mouse anti-goat IgG, Alexa fluor 568 (1:750) for 45 minutes at room temperature (Pettingill *et al.*, 2015). Full details are given in (Pettingill *et al.*, 2015) and in the Appendix (supplementary material 1).

Serum VGKC-complex antibodies were tested using a radio-immunoprecipitation assay (Irani *et al.*, 2010b, Paterson *et al.*, 2014). VGKC results were expressed as picomoles (pM) per litre of serum.

Neuronal cultures were prepared from P0 rat hippocampi and antibody binding performed at 1:100 serum or plasma after 10-14 days in culture (Irani *et al.*, 2010a, Irani *et al.*, 2010b, Pettingill *et al.*, 2015).

### **Clinical assessments**

The degree of psychopathology at first presentation to mental health services was measured on the Positive and Negative Syndrome Scale (PANSS)(Kay *et al.*, 1987). Overall functional disability was assessed using the Global Assessment of Functioning (GAF).

### **Statistical Analysis**

Differences in NMDAR and VGKC-complex antibody prevalence rates in FEP patients and controls were assessed using Chi square and t-tests. All statistical tests were two-sided and the  $\alpha$ - level for statistical significance was 0.05.

## **Results**

### **Sample characteristics**

The demographic characteristics of patients with FEP and controls are shown in Table 1.

Cases and controls with positive results are summarized in Table 2. Six percent of cases (n=6/96) and 6% of controls (n=6/98) were positive ( $\chi^2=0.001$ ,  $p=0.602$ ) for specific antibodies (NMDAR, LGI1, CASPR2 or VGKC-complex); of these, three cases and three controls had IgG antibodies binding to hippocampal neurons in culture. An additional one case and three controls had unknown neuronal antibodies only. Overall, nine controls and seven patients had antibody positivity or were positive on neuronal staining, but this difference did not meet statistical significance ( $\chi^2=0.229$ ,  $p=0.414$ ). All

patients with antibody positivity or positive neuronal staining were female (7/47). Five controls with antibody positivity or with neuronal staining were female and 3 were male. Examples of the cell-based assays, neurons and scatter plots of the data are shown in supplementary figure 1.

Of the plasma samples, no antibody positive cases were detected in cases (n=30), but one female control sample was positive for LGI1, with no other antibodies identified in control plasma samples (n=30). When the serum samples alone were considered, therefore, the proportion with antibody positivity or neuronal positivity increased to 8/68 controls (11.8%) and 7/66 patients (10.6%)  $\chi^2=0.045$ ,  $p=0.525$

### **NMDAR Antibodies**

Standardised immunofluorescent cell based assay (CBA) for the detection of serum IgG antibodies directed against NMDAR was positive in 1% (n=1 female) of cases and 1% (n=1 male) of controls.

### **VGKC-complex, LGI1 and CASPR2 antibodies**

VGKC-complex antibodies were the most prevalent antibody in both cases and controls, found in 3.1% (n=3) of patients and in 2.0% (n=2) of controls ( $\chi^2=0.227$ ,  $p=0.490$ ). In cases, VGKC-complex antibody positivity was found in female patients only (n=3/47) (males (n=0/49) ( $\chi^2=3.229$ ,  $p=0.113$ )). VGKC-complex antibodies were found in one male and one female control.

Two patients (both female) and two controls (both female) had LGI1 antibodies, though none were associated with VGKC-complex antibodies. CASPR2 antibodies were found in one female patient and in one female control. The patient with CASPR2 antibodies was also positive for NMDAR antibodies.

There were no cases or controls with high positive VGKC-complex antibodies. (>400pM). The mean level in cases was 179.7 (SD 95.8) pM and 212.0 (SD 31.1) pM in controls ( $t=0.441$ ,  $p=0.689$ ). One case with VGKC-complex antibodies (132 pM) and one control (234 pM) also showed neuronal staining.

### **Associations with clinical measures**

There were no significant differences between cases with any antibody positivity and cases which were antibody negative in mean total PANSS score (64.2 (15.4) vs 59.3 (15.1) ( $z=0.460$ ,  $p=0.646$ ); mean PANSS positive scores (18.8 (3.9) vs 15.2(6.0) ( $z=1.582$ ,  $p=0.114$ ); mean PANSS negative score (13.2 (6.6) vs 13.9 (5.3) ( $z=-0.607$ ,  $p=0.544$ ); mean GAF symptom scores (29.6 (12.4) vs 28.9 (12.6) ( $z=0.335$ ,  $p=0.737$ ) or mean GAF disability scores (30.1 (14.7) vs (31.9 (14.4) ( $z=-0.502$ ,  $p=0.616$ ).

## Discussion

This is the second matched case-control study to assess the prevalence of antibodies in patients with FEP and matched healthy controls. We did not find evidence to support the hypothesis that FEP is associated with an immune-mediated process in a subgroup of patients. Our findings in healthy adults contrast with those of the recent case control study of 228 FEP patients, in which NMDAR antibodies ( $n=7$ ; 3% of total population) were more prevalent in patients with FEP than in the control group ( $n=0/105$ ) (Lennox *et al.*, 2017). Similar to our study, Lennox *et al* did not identify a significantly increased prevalence of antibodies against LGI1, or VGKC-complex between the groups. Our rates of patient positivity were similar to, and indeed slightly numerically higher than an earlier case series (Zandi *et al.*, 2011), but no higher than in our controls. Our findings therefore fail to support the hypothesis that NMDAR and VGKC-complex antibodies are higher or more prevalent in the sera of patients with FEP than in healthy controls.

This accords with findings in other centres: Steiner *et al.* 2013 found no difference in NMDAR antibody rates between groups in a large cohort of people with acute schizophrenia and controls, although the laboratory methods were different to those used here. A large scale systematic screening did not identify a significant difference in prevalence of NMDAR antibodies between those with schizophrenia (8.6%) and healthy controls (10.8%)(Hammer *et al.*, 2014). In that study, the authors postulated that those with schizophrenia may be rendered vulnerable to the effect of circulating antibodies by previous blood brain barrier perturbation, perhaps due to previous head injury or



infection(Hammer *et al.*, 2014). Likewise, a smaller unmatched case control study found no NMDAR antibodies in either 80 patients with first episode schizophrenia or 40 controls (Masdeu *et al.*, 2012). Our findings in healthy adults contrast with those of a case control study of 43 children with FEP (median age 15 years), which identified NMDAR antibodies in 6 of 43 patients, but in none of the controls (Pathmanandavel *et al.*, 2014).

While we did not find it to be statistical significant, it is intriguing that all 7 patients with antibody or neuronal positivity were female. A predominance of females with NMDAR antibodies is evident in patients with NMDAR-antibody encephalitis with 59% of such cases associated with ovarian tumours (Dalmau *et al.*, 2008). However, subsequent reports tended to find less extreme gender effects (68% female vs 32% males) and lower rates of ovarian tumours (26% of females with NMDAR antibody positivity with ovarian teratoma) (Irani *et al.*, 2010b). Our findings are not consistent with prior studies in established psychosis, in which male patients with antibody positivity prevailed (Steiner *et al.*: 10 male vs 5 female positive; Hammer *et al.*: 11.5% male positive and 8.7% females)(Hammer *et al.*, 2014, Steiner *et al.*, 2013) and there were equivalent prevalence of IgA and IgM antibodies in cases and controls(Hammer *et al.*, 2014). We identified no difference in IgG antibodies, which are considered highly specific for the full NMDAR-antibody encephalitis, between patients and controls.

Our study excluded people presenting with organic psychosis, and so our sample may have fewer patients with neurological/neuropsychiatric features than a less selected group. Nevertheless, if serum disease relevant autoantibodies result in uncomplicated psychosis, one would expect to see an excess of these antibodies in the patient group over controls. We did not, however, test for other factors which may render serum antibodies pathological in patients, such as those affecting blood brain barrier permeability(Hammer *et al.*, 2014), and there is evidence from case series that NMDAR-antibody positive patients with predominant psychosis at onset can be missed or have delayed diagnosis (Barry *et al.*, 2011, Tsutsui *et al.*, 2012).

We restricted our search to IgG antibodies detected on the cell based assays (NMDAR, LGI1, CASPR2) and did not look specifically for other (e.g., IgM, IgA) antibody classes. Although the IgG

antibody subtype was the class that was associated with psychosis in a meta-analysis of NMDAR antibody prevalence in FEP (Pollak *et al.*, 2014), it remains possible that subjects with FEP and controls in this study could differ with respect to other antibody classes. Another potential source of underestimate in antibody prevalence in cases was that only serum or plasma was tested. It has previously been shown that in NMDAR-antibody disease 15% of patients with antibodies in the cerebrospinal fluid (CSF) did not have detectable antibodies in the serum (Gresa-Arribas *et al.*, 2014), although that study used a different method to that used here; nevertheless it would be important in future studies to obtain CSF.

It has been suggested that differing findings in the field may relate to this variation in methodologies (Masdeu *et al.*, 2012, Rhoads *et al.*, 2011). All are based on visualisation of staining, where serum antibody is reacting with a transfected cell expressing the antigen in a natural conformation, but many use fixed permeabilised cells, which may reduce sensitivity and potentially may reduce specificity.

We noted the absence of antibody reactivity in all the plasma samples in cases. This may reflect a true absence of positive samples or could result from an unidentified technical problem. Antibodies can be tested adequately in plasmapheresis samples but the plasma samples were collected in EDTA tubes; it is theoretically possible that this may have affected the live cell assays. We decided that it was important to report this group as, were we to exclude them, while the proportion of positive cases and controls would increase further, there would still be no difference between groups.

During the course of the study patients with organic presentations were excluded which may be one reason for the low proportion of positive results in comparison with Lennox *et al.* 2017 (Lennox *et al.*, 2017). Further, as the proportion of cases and of controls with antibody positivity was small, it remains a possibility that the negative findings may be due to insufficient statistical power. We do not have longitudinal data in relation to outcomes for these patients and none of the patients received immunotherapy concurrent to the identification of antibody positivity. We did not set out to describe clinical impact and course of illness in those with antibody positivity.

## **Conclusions**

We have identified a similar low prevalence of NMDAR and VGKC-complex antibodies in patients with first episode psychosis as in controls. Thus screening of patients with FEP for these antibodies in isolation will generate results that may be difficult to interpret in practice. Further work is needed to understand what other conditions, either clinical or biological, need to exist to render such antibodies clinically relevant in psychosis.

## **Acknowledgements**

### **NIHR Attribution/ Disclaimer**

This paper summarises independent research funded by the National Institute for Health Research (NIHR) under its IMPACT Programme (Grant Reference Number RP-PG-0606-1049) and by the National Institute for Health Research (NIHR) Biomedical Research Centre at South London and Maudsley NHS Foundation Trust and King's College London. FG is supported by the National Institute for Health Research (NIHR) Collaboration for Leadership in Applied Health Research and Care South London at King's College Hospital NHS Foundation Trust. Work in the Oxford laboratory is supported partly by the NIHR Oxford Biomedical Centre. The views expressed are those of the authors and not necessarily those of the National Health Service (NHS), the NIHR or the Department of Health.

FG is also supported by the South London CLAHRC.

## **Disclosure**

FG has received honoraria for advisory work and lectures from Roche, BMS, Lundbeck, Otsuka and Sunovion, is a collaborator on a NHS Innovations project co-funded by Janssen and has a family member with professional links to Lilly and GSK, including stock

RSF is now an employee of Otsuka Pharmaceuticals.

EP is an employee of Mundipharma Research Limited, Cambridge, UK

RMM has received payment for lectures including service on speakers' bureaus for BMS, Janssen, AZ.

AV and the University of Oxford hold patents and receive royalties for antibody tests including LGI1 and CASPR2.

The other authors, JL, KB, RM, PGS, EC,LJ, BL, MF and TN have no conflict of interest to declare.

- Barry, H., Hardiman, O., Healy, D. G., Keogan, M., Moroney, J., Molnar, P. P., Cotter, D. R. & Murphy, K. C.** (2011). Anti-NMDA receptor encephalitis: an important differential diagnosis in psychosis. *British Journal of Psychiatry* **199**, 508-9.
- Bebbington, P. & Nayani, T.** (1995). The Psychosis Screening Questionnaire. *International Journal of Methods in Psychiatric Research* **5**, 11-19.
- Beck, K., Lally, J., Shergill, S. S., Bloomfield, M. A. P., MacCabe, J. H., Gaughran, F. & Howes, O. D.** (2015). Prevalence of serum N-methyl-D-aspartate receptor autoantibodies in refractory psychosis. *British Journal of Psychiatry* **206**, 164-165.
- Benros, M. E., Eaton, W. W. & Mortensen, P. B.** (2014). The Epidemiologic Evidence Linking Autoimmune Diseases and Psychosis. *Biological Psychiatry* **75**, 300-306.
- Coutinho, E., Harrison, P. & Vincent, A.** (2014). Do Neuronal Autoantibodies Cause Psychosis? A Neuroimmunological Perspective. *Biological Psychiatry* **75**, 269-275.
- Dalmau, J., Gleichman, A. J., Hughes, E. G., Rossi, J. E., Peng, X., Lai, M., Dessain, S. K., Rosenfeld, M. R., Balice-Gordon, R. & Lynch, D. R.** (2008). Anti-NMDA-receptor encephalitis: case series and analysis of the effects of antibodies. *Lancet Neurology* **7**, 1091-8.
- de Witte, L. D., Hoffmann, C., van Mierlo, H. C., Titulaer, M. J., Kahn, R. S. & Martinez-Martinez, P.** (2015). Absence of N-Methyl-D-Aspartate Receptor IgG Autoantibodies in Schizophrenia: The Importance of Cross-Validation Studies. *JAMA Psychiatry* **72**, 731-3.
- Deakin, J., Lennox, B. R. & Zandi, M. S.** (2014). Antibodies to the N-Methyl-D-Aspartate Receptor and Other Synaptic Proteins in Psychosis. *Biological Psychiatry* **75**, 284-291.
- Eaton, W. W., Byrne, M., Ewald, H., Mors, O., Chen, C. Y., Agerbo, E. & Mortensen, P. B.** (2006). Association of schizophrenia and autoimmune diseases: linkage of Danish national registers. *American Journal of Psychiatry* **163**, 521-8.
- Ezeoke, A., Mellor, A., Buckley, P. & Miller, B.** (2013). A systematic, quantitative review of blood autoantibodies in schizophrenia. *Schizophrenia Research* **150**, 245-51.
- Gresa-Arribas, N., Titulaer, M. J., Torrents, A., Aguilar, E., McCracken, L., Leypoldt, F., Gleichman, A. J., Balice-Gordon, R., Rosenfeld, M. R., Lynch, D., Graus, F. & Dalmau, J.** (2014). Antibody titres at diagnosis and during follow-up of anti-NMDA receptor encephalitis: a retrospective study. *The Lancet Neurology* **13**, 167-177.
- Hacohen, Y., Singh, R., Rossi, M., Lang, B., Hemingway, C., Lim, M. & Vincent, A.** (2015). Clinical relevance of voltage-gated potassium channel-complex antibodies in children. *Neurology* **85**, 967-75.
- Hammer, C., Stepniak, B., Schneider, A., Papiol, S., Tantra, M., Begemann, M., Siren, A. L., Pardo, L. A., Sperling, S., Mohd Jofrry, S., Gurvich, A., Jensen, N., Ostmeier, K., Luhder, F., Probst, C., Martens, H., Gillis, M., Saher, G., Assogna, F., Spalletta, G., Stocker, W., Schulz, T. F., Nave, K. A. & Ehrenreich, H.** (2014). Neuropsychiatric disease relevance of circulating anti-NMDA receptor autoantibodies depends on blood-brain barrier integrity. *Molecular Psychiatry* **19**, 1143-9.
- Haussleiter, I. S., Emons, B., Schaub, M., Borowski, K., Brüne, M., Wandinger, K.-P. & Juckel, G.** (2012). Investigation of antibodies against synaptic proteins in a cross-sectional cohort of psychotic patients. *Schizophrenia Research* **140**, 258-259.
- Irani, S. R., Alexander, S., Waters, P., Kleopa, K. A., Pettingill, P., Zuliani, L., Peles, E., Buckley, C., Lang, B. & Vincent, A.** (2010a). Antibodies to Kv1 potassium channel-complex proteins leucine-rich,

glioma inactivated 1 protein and contactin-associated protein-2 in limbic encephalitis, Morvan's syndrome and acquired neuromyotonia. *Brain* **133**, 2734-48.

**Irani, S. R., Bera, K., Waters, P., Zuliani, L., Maxwell, S., Zandi, M. S., Friese, M. A., Galea, I., Kullmann, D. M., Beeson, D., Lang, B., Bien, C. G. & Vincent, A.** (2010b). N-methyl-d-aspartate antibody encephalitis: temporal progression of clinical and paraclinical observations in a predominantly non-paraneoplastic disorder of both sexes. *Brain* **133**, 1655-1667.

**Irani, S. R., Michell, A. W., Lang, B., Pettingill, P., Waters, P., Johnson, M. R., Schott, J. M., Armstrong, R. J., A, S. Z., Bleasel, A., Somerville, E. R., Smith, S. M. & Vincent, A.** (2011). Faciobrachial dystonic seizures precede Lgi1 antibody limbic encephalitis. *Annals of Neurology* **69**, 892-900.

**Kay, S. R., Fiszbein, A. & Opler, L. A.** (1987). The positive and negative syndrome scale (PANSS) for schizophrenia. *Schizophrenia Bulletin* **13**, 261-76.

**Kayser, M. S., Titulaer, M. J., Gresa-Arribas, N. & Dalmau, J.** (2013). Frequency and characteristics of isolated psychiatric episodes in anti-N-methyl-d-aspartate receptor encephalitis. *JAMA Neurology* **70**, 1133-9.

**Lang, B., Makuch, M., Moloney, T., Dettmann, I., Mindorf, S., Probst, C., Stoecker, W., Buckley, C., Newton, C. R., Leite, M. I., Maddison, P., Komorowski, L., Adcock, J., Vincent, A., Waters, P. & Irani, S. R.** (2017). Intracellular and non-neuronal targets of voltage-gated potassium channel complex antibodies. *Journal of Neurology Neurosurgery & Psychiatry*.

**Lennox, B. R., Palmer-Cooper, E. C., Pollak, T., Hainsworth, J., Marks, J., Jacobson, L., Lang, B., Fox, H., Ferry, B., Scoriels, L., Crowley, H., Jones, P. B., Harrison, P. J. & Vincent, A.** (2017). Prevalence and clinical characteristics of serum neuronal cell surface antibodies in first-episode psychosis: a case-control study. *Lancet Psychiatry* **4**, 42-48.

**Masdeu, J. C., Gonzalez-Pinto, A., Matute, C., Ruiz De Azua, S., Palomino, A., De Leon, J., Berman, K. F. & Dalmau, J.** (2012). Serum IgG antibodies against the NR1 subunit of the NMDA receptor not detected in schizophrenia. *American Journal of Psychiatry* **169**, 1120-1.

**McGuffin, P., Farmer, A. & Harvey, I.** (1991). A polydiagnostic application of operational criteria in studies of psychotic illness. Development and reliability of the OPCRIT system. *Archives of General Psychiatry* **48**, 764-70.

**Paterson, R. W., Zandi, M. S., Armstrong, R., Vincent, A. & Schott, J. M.** (2014). Clinical relevance of positive voltage-gated potassium channel (VGKC)-complex antibodies: experience from a tertiary referral centre. *Journal of Neurology Neurosurgery and Psychiatry* **85**, 625-30.

**Pathmanandavel, K., Starling, J., Merheb, V., Ramanathan, S., Sinmaz, N., Dale, R. C. & Brilot, F.** (2014). Antibodies to Surface Dopamine-2 Receptor and N-Methyl-D-Aspartate Receptor in the First Episode of Acute Psychosis in Children. *Biological Psychiatry* **23**, 00547-2.

**Pearlman, D. M. & Najjar, S.** (2014). Meta-analysis of the association between N-methyl-d-aspartate receptor antibodies and schizophrenia, schizoaffective disorder, bipolar disorder, and major depressive disorder. *Schizophrenia Research* **157**, 249-258.

**Pettingill, P., Kramer, H. B., Coebergh, J. A., Pettingill, R., Maxwell, S., Nibber, A., Malaspina, A., Jacob, A., Irani, S. R., Buckley, C., Beeson, D., Lang, B., Waters, P. & Vincent, A.** (2015). Antibodies to GABAA receptor alpha1 and gamma2 subunits: clinical and serologic characterization. *Neurology* **84**, 1233-41.

**Pollak, T. A., McCormack, R., Peakman, M., Nicholson, T. R. & David, A. S.** (2014). Prevalence of anti-N-methyl-D-aspartate (NMDA) receptor [corrected] antibodies in patients with schizophrenia and related psychoses: a systematic review and meta-analysis. *Psychological Medicine* **44**, 2475-87.

**Rhoads, J., Guirgis, H., McKnight, C. & Duchemin, A. M.** (2011). Lack of anti-NMDA receptor autoantibodies in the serum of subjects with schizophrenia. *Schizophrenia Research* **129**, 213-4.

**Somers, K. J., Lennon, V. A., Rundell, J. R., Pittock, S. J., Drubach, D. A., Trenerry, M. R., Lachance, D. H., Klein, C. J., Aston, P. A. & McKeon, A.** (2011). Psychiatric manifestations of voltage-gated potassium-channel complex autoimmunity. *Journal of Neuropsychiatry & Clinical Neuroscience* **23**, 425-33.

- Steiner, J., Walter, M., Glanz, W., Sarnyai, Z., Bernstein, H. G., Vielhaber, S., Kastner, A., Skalej, M., Jordan, W., Schiltz, K., Klingbeil, C., Wandering, K. P., Bogerts, B. & Stoecker, W.** (2013). Increased prevalence of diverse N-methyl-D-aspartate glutamate receptor antibodies in patients with an initial diagnosis of schizophrenia: specific relevance of IgG NR1a antibodies for distinction from N-methyl-D-aspartate glutamate receptor encephalitis. *JAMA Psychiatry* **70**, 271-8.
- Tsutsui, K., Kanbayashi, T., Tanaka, K., Boku, S., Ito, W., Tokunaga, J., Mori, A., Hishikawa, Y., Shimizu, T. & Nishino, S.** (2012). Anti-NMDA-receptor antibody detected in encephalitis, schizophrenia, and narcolepsy with psychotic features. *BMC Psychiatry* **12**, 37.
- Wandering, K. P., Saschenbrecker, S., Stoecker, W. & Dalmau, J.** (2011). Anti-NMDA-receptor encephalitis: a severe, multistage, treatable disorder presenting with psychosis. *Journal of Neuroimmunology* **231**, 86-91.
- Wright, P., Laing, P., Donaldson, P. T. & Murray, R. M.** (1999). Schizophrenia: the teratogenic antibody Hypothesis. In *Psychiatry, Psychoimmunology, and Viruses* (ed. N. Müller), pp. 89-99. Springer Vienna: Vienna.
- Zandi, M. S., Irani, S. R., Lang, B., Waters, P., Jones, P. B., McKenna, P., Coles, A. J., Vincent, A. & Lennox, B. R.** (2011). Disease-relevant autoantibodies in first episode schizophrenia. *Journal of neurology* **258**, 686-8.
- Zuliani, L., Graus, F., Giometto, B., Bien, C. & Vincent, A.** (2012). Central nervous system neuronal surface antibody associated syndromes: review and guidelines for recognition. *Journal of Neurology Neurosurgery and Psychiatry* **83**, 638-45.

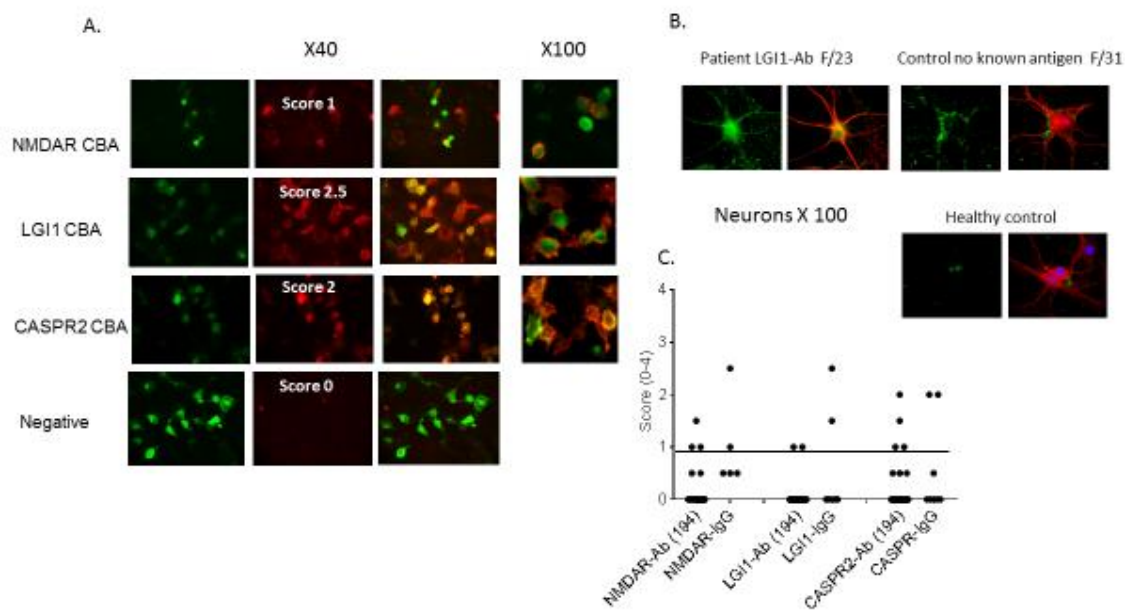
Figure 1. Cell-based assays and scatter plots of the data

Left. Examples of cell based assays for antibodies to CASPR2, LGI1 and NMDAR antibodies, and binding to live neuron.

In A. green fluorescent protein is used to indicate the transfection rates (left panels), red indicates the human IgG binding (central panels), and the merged images are shown in the right panels x40; and at higher magnification on the very right (x100).

B. Examples of sera binding to hippocampal neurons from one case, one control and one healthy individual. Human IgG is detected with green fluorescence, and after washing, fixing and permeabilisation the neurons are stained red with anti-MAP2.

C. Results of the antibody (Ab) screening assay (with anti-IgG(H&L) and the IgG specific assay (with anti-IgG(Fc)). The latter was only performed on the 14 of 16 sera still available in sufficient volume. Scores are shown for NMDAR and LGI1 antibodies at 1:20, and CASPR2 antibodies at 1:100, as performed for routine diagnostic analysis.



**Table 1: Characteristics of patients with first-episode psychosis and control participants**

	Patients with first episode psychosis (n=96)	Control group (n=98)
Sex		
Male	49 (51%)	49 (50%)
Female	47 (49%)	49 (50%)
Age (years)		
Mean (SD)	32.7 (10.7)	32.2 (11.0)
Median (range)	30 (18-63)	29 (18-59)
Ethnicity		
White	51 (53%)	58 (59%)
Black	30 (32%)	26 (27%)
Asian	10 (10%)	11 (11%)
Other	5 (5%)	3 (3%)
Diagnoses		
Paranoid Schizophrenia	47 (49%)	
Mania with psychotic symptoms	12 (13%)	
Schizoaffective disorder	9 (9%)	
Severe depression with psychotic symptoms	9 (9%)	
Delusional disorder	3 (3%)	
Other(including unspecified nonorganic psychosis)	16 (17%)	

Data are n (%) unless otherwise specified.



Table 2: Demographic and clinical characteristics of antibody positive cases and controls

CASES	Demographics	ICD-10 Diagnosis		CONTROLS	Demographics
Antibody(ies) detected				Antibody(ies) detected	
Hippocampal neurons NMDAR-Ab, score 2.5 at 1:20 CASPR2-Ab, score 2 at 1:100	F/58/White	Paranoid schizophrenia		Hippocampal neurons NMDAR-Ab, score 1 at 1:20	M/30/Black
Hippocampal neurons LGI1-Ab, 2.5 at 1:20	F/23/Black	Paranoid schizophrenia		Hippocampal neurons LGI1-Ab, score 1.5 at 1:20	F/22/White
LGI1-Ab, score 2 at 1:20, no sample available for confirmation	F/28/Black	Schizoaffective disorder, manic type		LGI1-Ab, no sample available for confirmation	F/36/White
Hippocampal neurons VGKC132 pM	F/44/Black	No criteria met		Hippocampal neurons VGKC 234 pM	F/31/Asian
VGKC-Ab 117 pM only	F/41/White	Schizoaffective disorder, depressive type		VGKC 190 pM only	M/42/Black
VGKC-Ab 290 pM only	F/18/White	Paranoid schizophrenia			
				CASPR2-Ab, score 2 at 1:100	F/37/White
Hippocampal neurons	F/24/White	Schizoaffective disorder, manic type		Hippocampal neurons	F/25/White
				Hippocampal neurons	F/46/Black
				Hippocampal neurons	M27/Black

NMDAR=N-Methyl-D-Aspartate receptor; LGI1= leucine- rich glioma inactivated-1; CASPR= contactin-associated protein-2; VGKC-Ab = voltage gated potassium channel-complex antibody (by radioimmunoassay); M=male; F=female



## Supplementary Material 1

### Appendix

HEK 293 cells were grown in Dulbecco's Modified Eagle's Medium (DMEM; Sigma D6429) supplemented with 10% Fetal Calf Serum (FCS; Biowest S181B) and 1% penicillin G/streptomycin/amphotericin (PSA; Life technologies 15240-062) in flasks kept in a humidified, 5% CO<sub>2</sub> incubator. For screening purposes, those cells grown in flasks were transferred to 6-well plates with 13 mm poly-L-lysine coated glass coverslips, by gentle detachment with 1% trypsin in phosphate buffer saline (PBS) and re-seeding in DMEM/10% FCS/1% PSA at a concentration of  $2.5 \times 10^5$  cells/mL, in a total volume of 2 mL/well. The following day, cells were transfected using 1.5  $\mu$ L polyethylenimine (PEI) with 3  $\mu$ g of the cDNA plasmids encoding the relevant human subunits. After 14-16 hours, the medium was replaced with fresh DMEM/10% FCS/1% PSA. In the particular case of the NMDAR CBA, to prevent cytotoxicity as a result of glutamate in the medium activating the NMDARs, the medium was supplemented with 500  $\mu$ M of ketamine. Immunocytochemistry (ICC) was performed on the fourth day. Up until then, all procedures were conducted in sterile conditions in a class II tissue culture hood. For ICC, coverslips were transferred to individual wells in a 24-well plate. Patient serum samples were added to DMEM supplemented with bovine serum albumin (BSA) (1% w/v) and 200 mM 4-(2-hydroxyethyl)-1-piperazineethanesulfonic acid (HEPES, Sigma H3375) at a 1:20 or 1:100 dilution ratio, to make a total volume of 250  $\mu$ L/sample. Positive (known positive patients) and healthy controls were added in each assay. Diluted sera were incubated with the live cells on coverslips at room temperature for 1 hour, after which the supernatant was aspirated and washed 3 times in DMEM/HEPES. Cells were fixed in 4% formaldehyde in PBS and incubated for 10 minutes at RT and then washed 3 times in DMEM or PBS. Afterwards, cultures were incubated for 45 minutes in the dark, at room temperature, with goat anti-human IgG, Alexa Fluor 568 (Invitrogen; A21090; 1:750) in DMEM+HEPES+BSA. The coverslips were washed 4 times in PBS and mounted using fluorescent mounting media (Dako, S3023), containing 4',6'-diamidino-2-phenylindole (DAPI; Sigma D9542; 1:1000). After drying, cells were viewed with a Leica DM 2500 immunofluorescent microscope. Binding was then scored on a scale of 0-4 according to the intensity of the immunofluorescence (0= no binding, 1= weak binding, 2= moderate binding, 3=strong binding, 4=very strong binding). Any sample scoring 1 or above was repeated and double scored by a second, independent observer. If there was disagreement between observers, the sample would be retested. Positive samples (score  $\geq 1$ ) were then titrated and end-point titration determined (last titration at which a score=1 was still observed). Case and control samples were screened blinded to clinical status.

To confirm positive samples and the IgG nature of the binding, the live CBAs were repeated replacing goat anti-human IgG, Alexa Fluor 568 (Invitrogen; A21090; 1:750) with a goat anti-human Fc IgG(specific) secondary (Thermo Scientific; 31125; 1:750) followed by a mouse anti-goat IgG, Alexa fluor 568 (1:750) for 45 minutes at room temperature as mentioned in the methods. See Figure 1 for examples.

